

# COMMERCIAL SPACE FOR LEASE

**345 Royal  
Hawaiian Ave.**  
(1<sup>st</sup> Floor)  
Honolulu, HI



## Keith Geiger

Chief Operations Officer

T 310.314.2400 x3

E keith@brookhillcorp.com

## Crystal Morgan

Director of Asset Management

T 310.314.2400 x5

E crystal@brookhillcorp.com

PROFESSIONALLY MANAGED BY:



**BROOKHILL**  
CORP

# Property Highlights

Constructed in

**1958**

Major Revovation completed in

**2000**

Entire ground floor suite

**2,113 sf<sup>2</sup>**



Resort  
Mixed Use  
zoning



Located in  
Waikiki's  
economic center

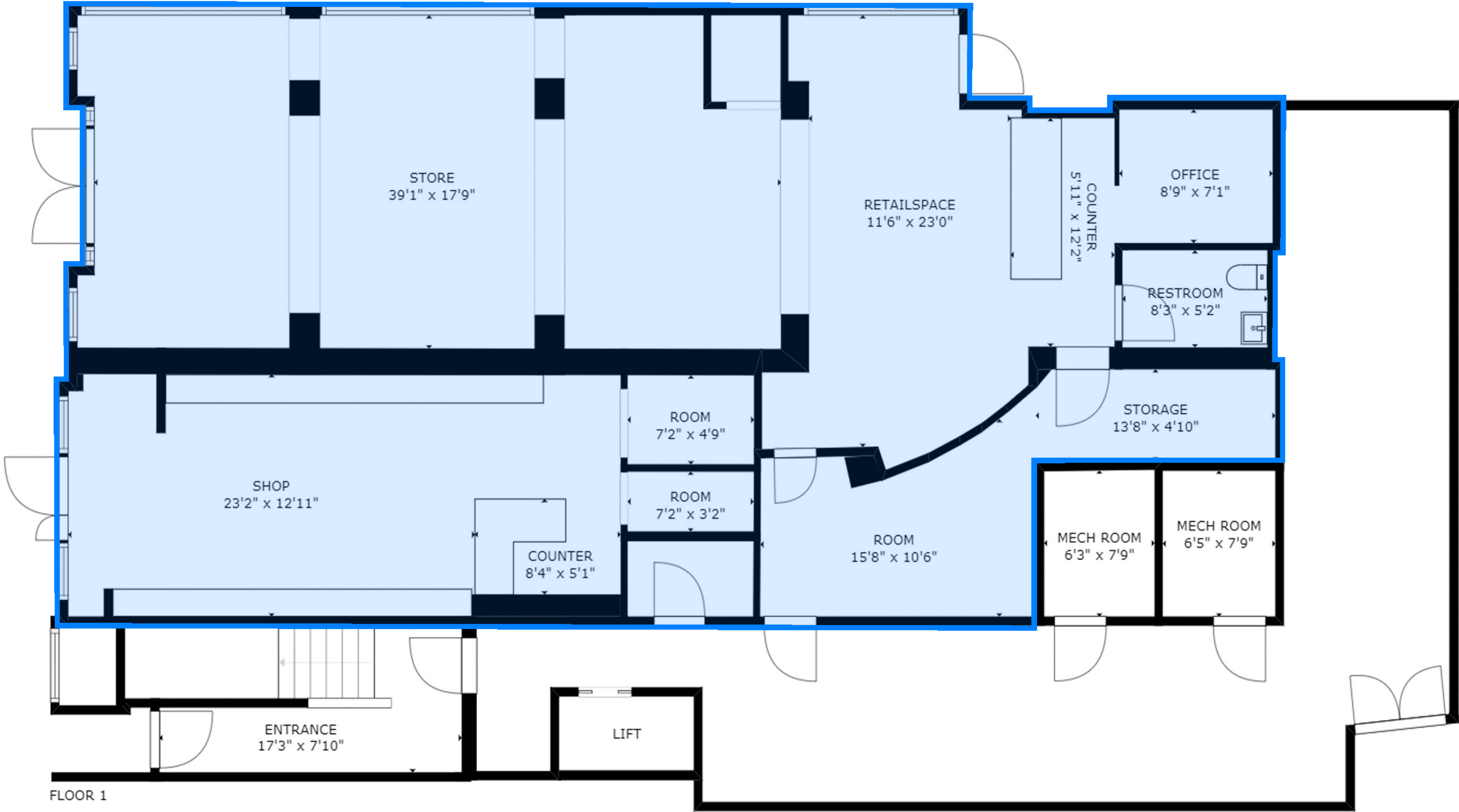


Heavily  
patronized street  
by tourists

# Floor Plan

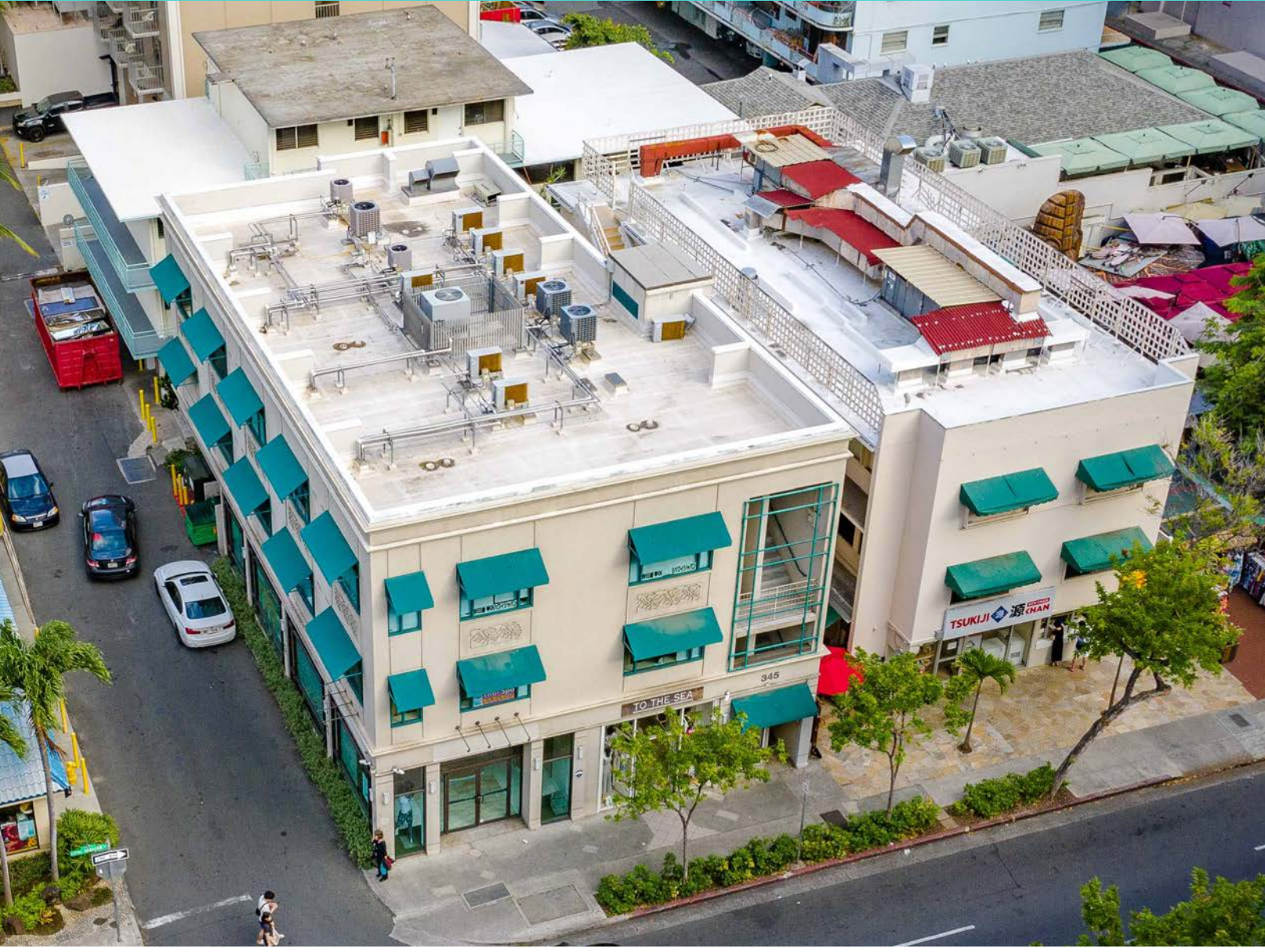
345 Royal Hawaiian Ave

1st Ground Floor - 2,113 sf<sup>2</sup>



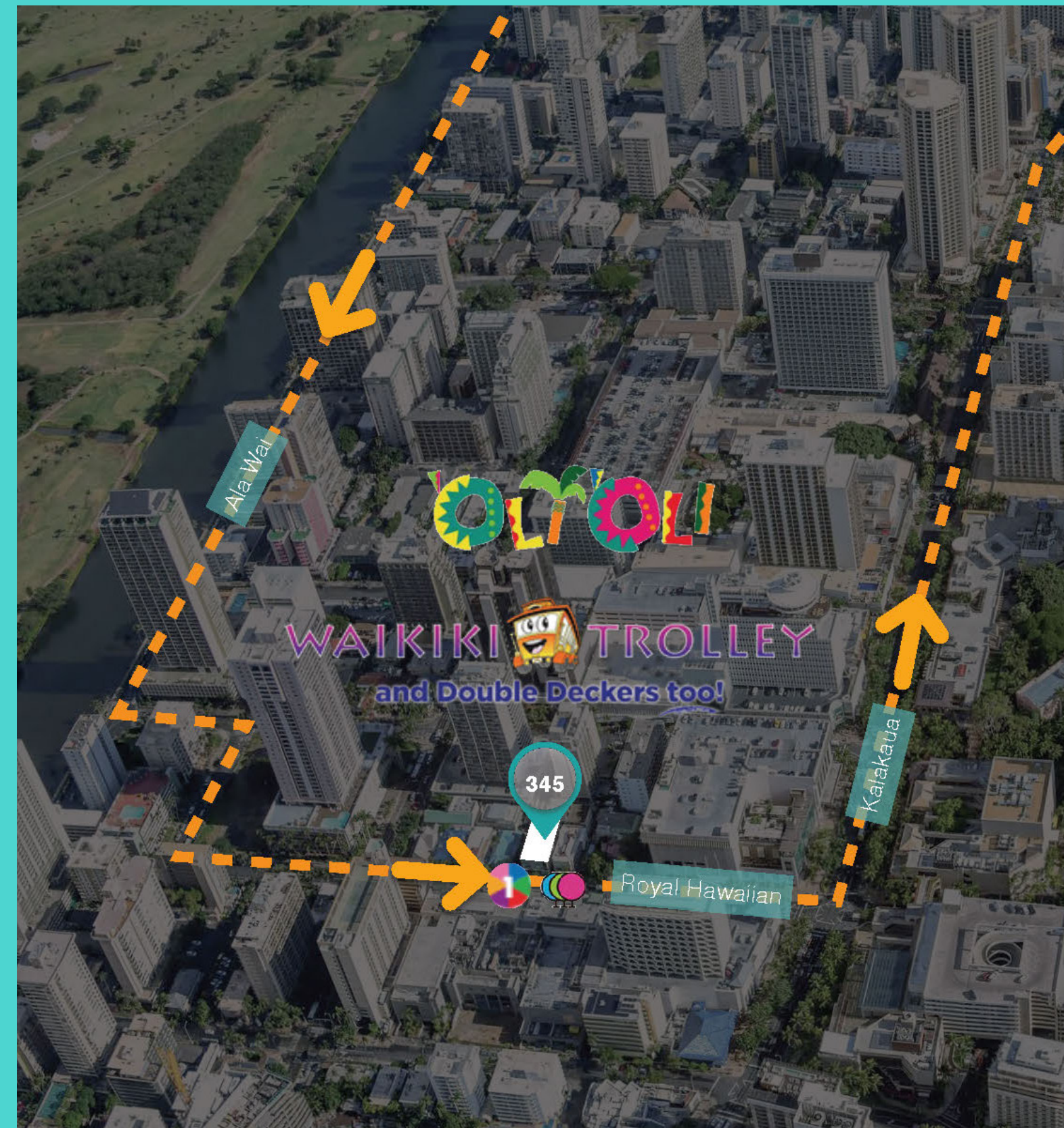
FLOOR 1

# Exterior Photos



# Local Transit

Located along main Trolley Transit line in Waikiki entering:





# Waikiki Shopping Area

# Contact Us



## Keith Geiger

Chief Operations Officer

T 310.314.2400 x3

E [keith@brookhillcorp.com](mailto:keith@brookhillcorp.com)



## Crystal Morgan

Director of Asset Management

T 310.314.2400 x5

E [crystal@brookhillcorp.com](mailto:crystal@brookhillcorp.com)

3415 S. Sepulveda Blvd Ste. 705 | Los Angeles, CA 90034