

BRISTOL INDUSTRIAL PARK BLDG

101 Industrial Drive
Bristol, TN 37620

Location

Near the entrance to Bristol Industrial Park
Approx. 5 miles from I-81, exits 1 and 3

Available for Sale

Approx. 57,600 SF office/warehouse building on
5.11 acre parcel
\$3,456,000

Highlights

Approx. 4,108 SF office area

5 loading docks and 1 drive in door

Ceiling heights - 26' at center, 22' at eaves

Column spacing 20'x40'

Radiant heat

Wet sprinkler system

Cummins Diesel Generator

Zoned M-2, General Industrial

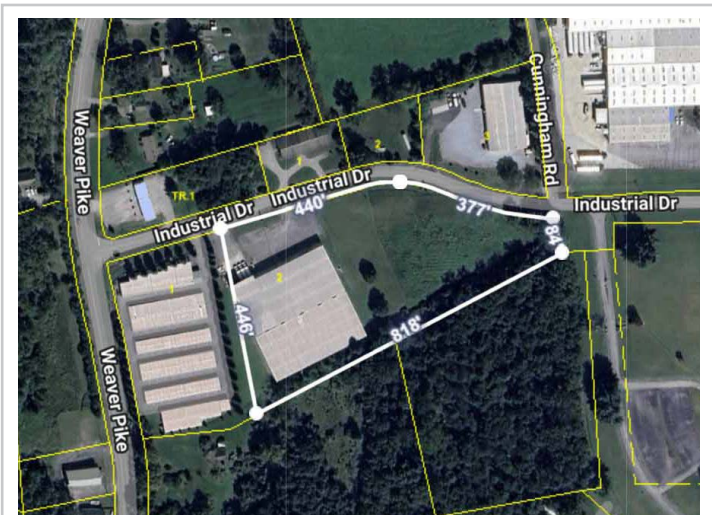
Demographics

(2025 Est.)	5 mile	15 mile	25 mile
Population	51,385	137,947	430,680
Median HH Income	\$54,356	\$60,110	\$58,805
Median Age	44.9	46.6	44.5

Contact

John Speropulos, CCIM, SIOR
john@mitchcox.com

📞 423-282-6582 | 📠 423-282-5903
www.mitchcox.com



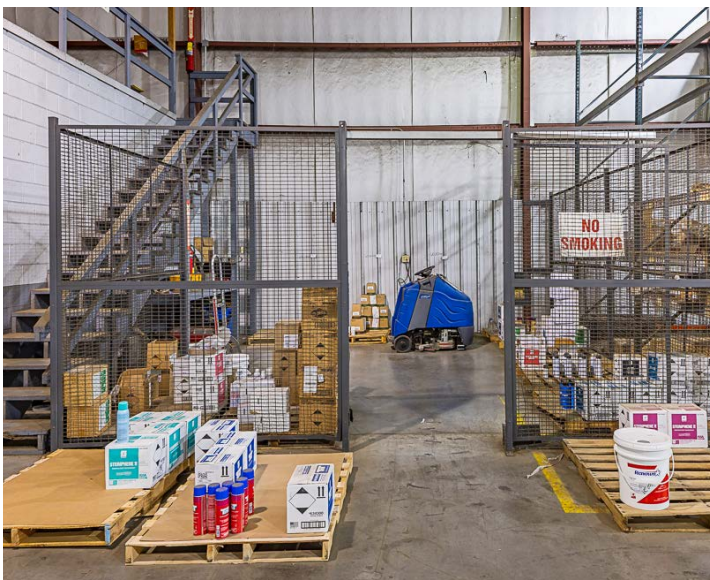
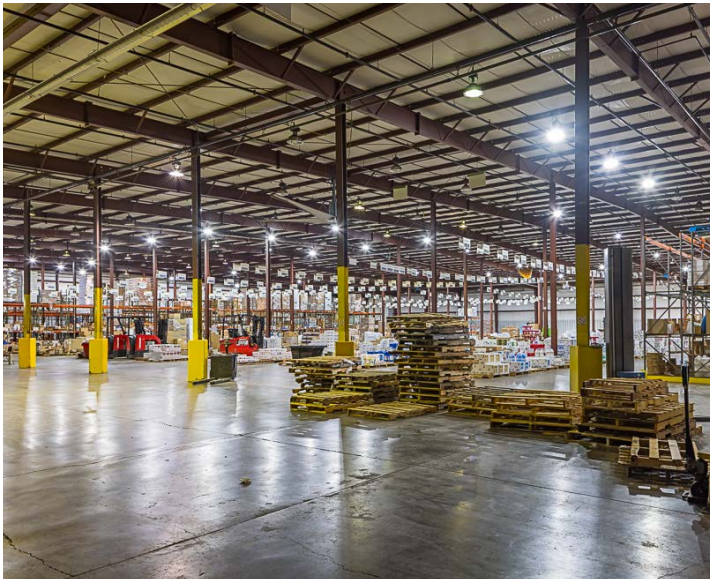


Warehouse



*Not an architectural plan - for marketing purposes only.





MITCH COX
REALTOR, INC.

2304 Silverdale Drive, Suite 200, Johnson City, TN 37601
423-282-6582 (o) 423-282-5903 (f) www.mitchcox.com