

M E R I D I A N

147 S. CHERRY STREET, SUITE 200 | WINSTON-SALEM, NC 27101 | P 336.722.1986 | F 336.723.3173 | MERIDIANREALTY.COM




15.45± Acres | Multifamily

1950 W. Clemmons Rd

Winston-Salem, NC 27127



Site is zoned for Life Care Community, Residential Building, Single Family and Planned Residential Development. Previously approved site plan for 88 two-bedroom apartments, 15 attached patio homes and 6 single homes. Easy access and located within 2 miles of retail and other amenities.

	DEMOGRAPHICS		
	1mi	3mi	5mi
 POPULATION	4,957	42,109	118,245
 HOUSEHOLD	1,831	18,426	50,962
 HOUSEHOLD INCOME	\$91,552	\$77,796	\$83,618

For more information:

William T. Bartholomew, Jr., CCIM
William@meridianrealty.com
336.480.2335

Tiffany J. Secoges, CCIM
Tiffany.s@meridianrealty.com
336.480.2094

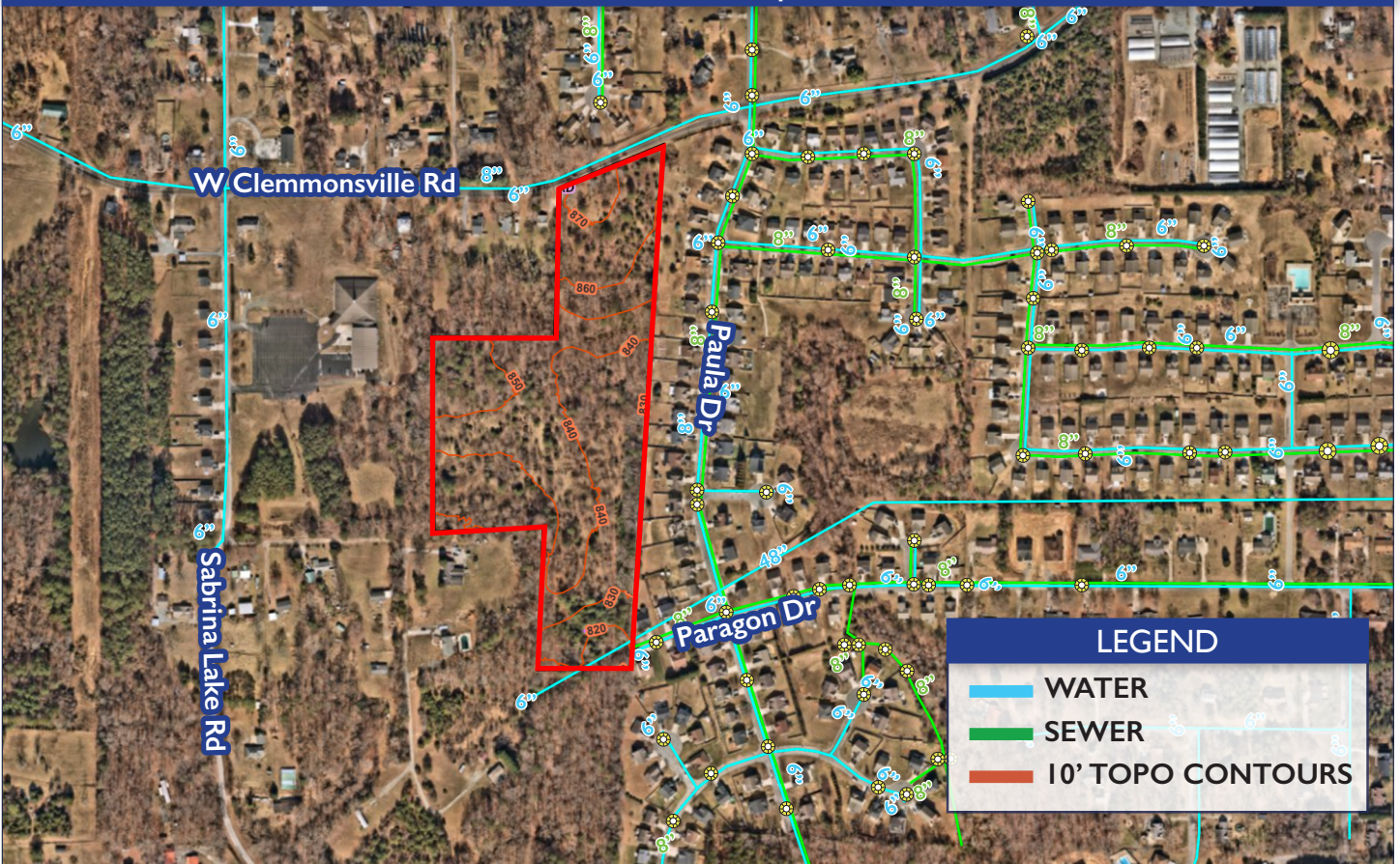
FOR SALE: \$1,300,000

WWW.MERIDIANREALTY.COM

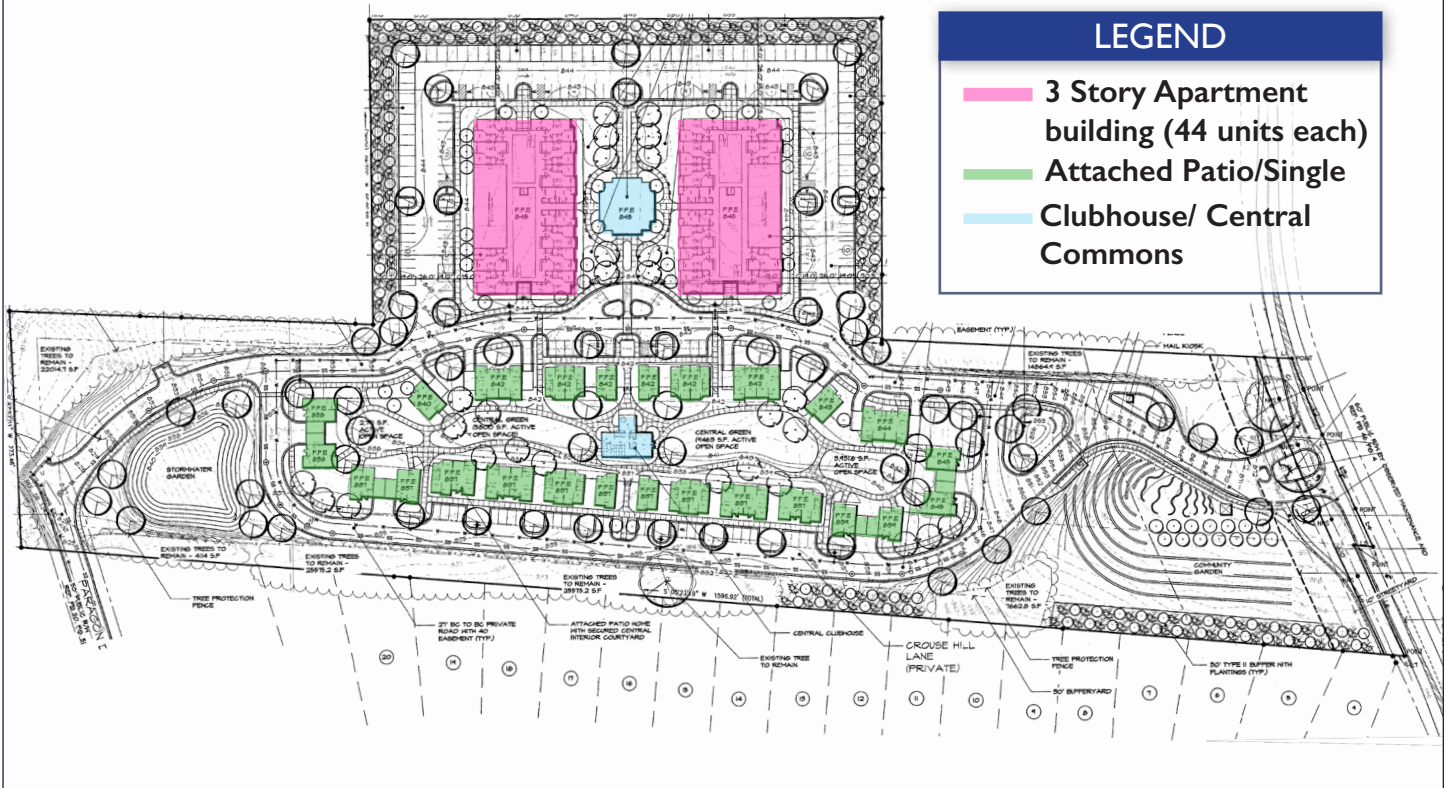
Aerial



Utilities Map



Site Plan

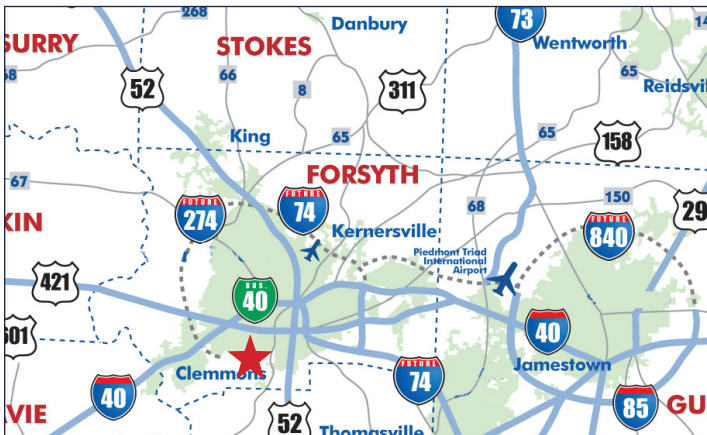


Rendering

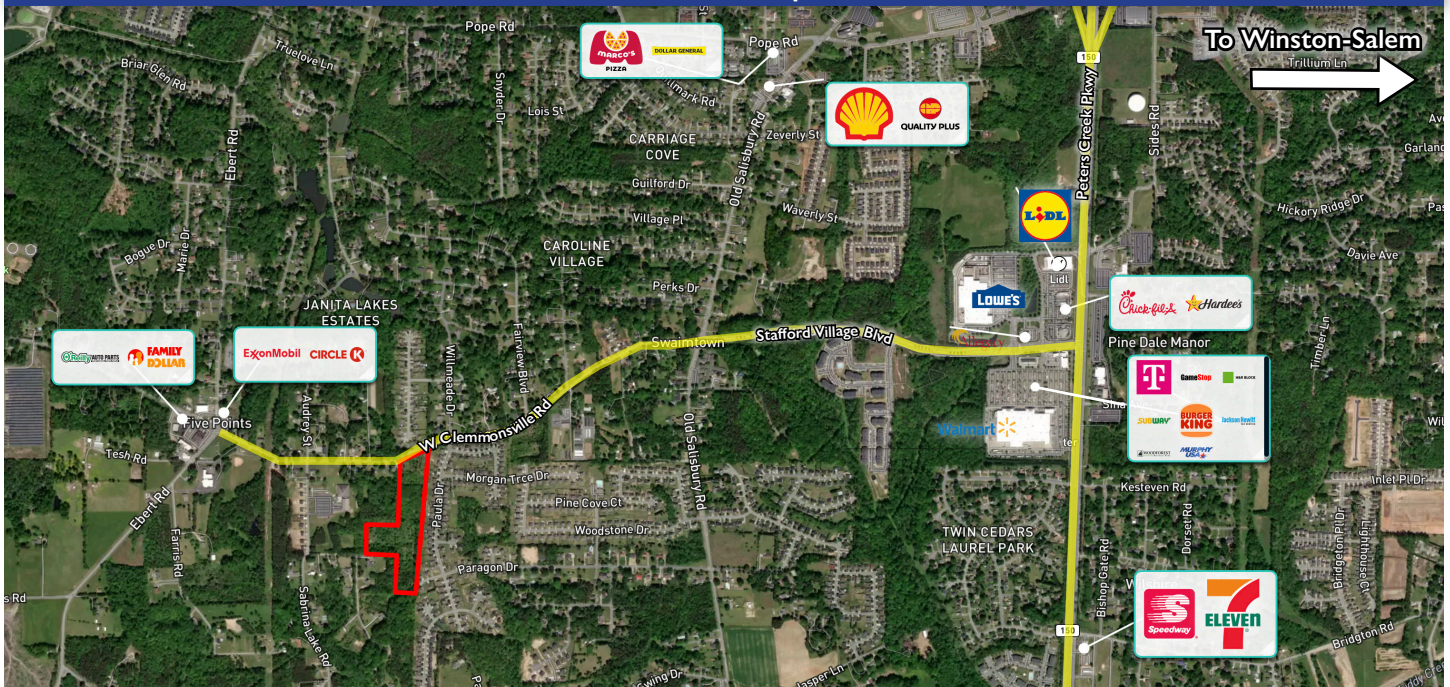


1950 W. Clemmonsville Road | Winston-Salem, NC 27127

- 15.45± AC
- Single Family and Planned Residential Development with previously approved Site plan for 88 two-bedroom apartments, 15 attached patio homes, and 6 single homes.
- Visibility on Clemmonsville Road.
- Conveniently located between Stratford Road to the west and Peters Creek Parkway to the east, with retail and amenities within 2 miles.
- Public utilities available.
- Sale Price: \$1.3 MM



Aerial Map



No warranty or representation (express or implied) is made as to the accuracy or completeness of the information set forth herein. All information is submitted subject to errors, omissions, change of price, prior lease or sale, and withdrawal without notice. All marketing material produced by the Meridian Realty Group is proprietary. Any reproduction is expressly prohibited.



THE MERIDIAN REALTY GROUP | 147 S. CHERRY STREET, SUITE 200 | WINSTON-SALEM, NC 27101

P 336.722.1986 | F 336.723.3173

WWW.MERIDIANREALTY.COM