

DATE 2-28-82
 ARCHITECTURAL
 FLOOR PLAN
 PROJECT STATION
 420

HSA
 HOTELMAN SUWAN
 ARCHITECTS
 1000 N. UNIVERSITY AVENUE, SUITE 200
 MIAMI BEACH, FLORIDA 33139
 (305) 531-1111

UNITED CHURCH OF CHRIST
 CONGREGATIONAL
 PLANT BAY, FLORIDA

IT IS THE RESPONSIBILITY OF THE CONTRACTOR TO OBTAIN THE NECESSARY PERMITS AND APPROVALS FROM THE CITY AND COUNTY ENGINEERS AND ARCHITECTS BEFORE COMMENCING CONSTRUCTION. THE CONTRACTOR SHALL BE RESPONSIBLE FOR OBTAINING ALL NECESSARY PERMITS AND APPROVALS FROM THE CITY AND COUNTY ENGINEERS AND ARCHITECTS BEFORE COMMENCING CONSTRUCTION.

6/14/82
 Craig A. Suwan, AIA, V.P.
 HSBW SWAN ARCHITECTS, INC.
 1000 N. UNIVERSITY AVENUE, SUITE 200
 MIAMI BEACH, FLORIDA 33139
 (305) 531-1111

CONTRACTORS SHALL NOT BID FROM PARTIAL
 CONTRACTORS WHICH ARE CONSIDERED PART OF THEIR TRADE
 WHICH HAVE BEEN COMPLETED AND WHICH ARE NOT TO BE
 RECONSTRUCTED OR REPAIRED BY THE CONTRACTOR.

CONTRACTORS SHALL NOT BID FROM PARTIAL
 CONTRACTORS WHICH ARE CONSIDERED PART OF THEIR TRADE
 WHICH HAVE BEEN COMPLETED AND WHICH ARE NOT TO BE
 RECONSTRUCTED OR REPAIRED BY THE CONTRACTOR.

CONTRACTORS SHALL NOT BID FROM PARTIAL
 CONTRACTORS WHICH ARE CONSIDERED PART OF THEIR TRADE
 WHICH HAVE BEEN COMPLETED AND WHICH ARE NOT TO BE
 RECONSTRUCTED OR REPAIRED BY THE CONTRACTOR.

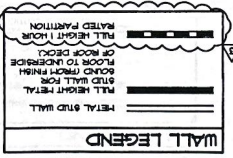
CONTRACTORS SHALL NOT BID FROM PARTIAL
 CONTRACTORS WHICH ARE CONSIDERED PART OF THEIR TRADE
 WHICH HAVE BEEN COMPLETED AND WHICH ARE NOT TO BE
 RECONSTRUCTED OR REPAIRED BY THE CONTRACTOR.

CONTRACTORS SHALL NOT BID FROM PARTIAL
 CONTRACTORS WHICH ARE CONSIDERED PART OF THEIR TRADE
 WHICH HAVE BEEN COMPLETED AND WHICH ARE NOT TO BE
 RECONSTRUCTED OR REPAIRED BY THE CONTRACTOR.

CONTRACTORS SHALL NOT BID FROM PARTIAL
 CONTRACTORS WHICH ARE CONSIDERED PART OF THEIR TRADE
 WHICH HAVE BEEN COMPLETED AND WHICH ARE NOT TO BE
 RECONSTRUCTED OR REPAIRED BY THE CONTRACTOR.

CONTRACTORS SHALL NOT BID FROM PARTIAL
 CONTRACTORS WHICH ARE CONSIDERED PART OF THEIR TRADE
 WHICH HAVE BEEN COMPLETED AND WHICH ARE NOT TO BE
 RECONSTRUCTED OR REPAIRED BY THE CONTRACTOR.

CONTRACTORS SHALL NOT BID FROM PARTIAL
 CONTRACTORS WHICH ARE CONSIDERED PART OF THEIR TRADE
 WHICH HAVE BEEN COMPLETED AND WHICH ARE NOT TO BE
 RECONSTRUCTED OR REPAIRED BY THE CONTRACTOR.



CABINETRY NOTES

1. ALL CABINETS TO BE CUSTOM GRADE QUALITY AND FINISHED WITH FINISH SPECIFIED.
2. CONTRACTOR TO COORDINATE WITH CABINETRY DESIGNER.
3. CONTRACTOR TO FIELD VERIFY ALL DIMENSIONS PRIOR TO CONSTRUCTION OF CABINETS.

INTERIOR FINISH NOTES

1. ALL INTERIOR FINISHES SHALL COMPLY WITH LOCAL AND STATE REQUIREMENTS AS SPECIFIED IN THE SPECIFICATIONS AND SCHEDULE.
2. CONTRACTOR SHALL BE RESPONSIBLE FOR OBTAINING ALL NECESSARY PERMITS AND APPROVALS FROM THE CITY AND COUNTY ENGINEERS AND ARCHITECTS BEFORE COMMENCING CONSTRUCTION.
3. CONTRACTOR SHALL BE RESPONSIBLE FOR OBTAINING ALL NECESSARY PERMITS AND APPROVALS FROM THE CITY AND COUNTY ENGINEERS AND ARCHITECTS BEFORE COMMENCING CONSTRUCTION.

MATERIALS

1. ALL MATERIALS TO BE USED SHALL BE OF THE HIGHEST QUALITY AND SHALL BE APPROVED BY THE ARCHITECT.
2. CONTRACTOR SHALL BE RESPONSIBLE FOR OBTAINING ALL NECESSARY PERMITS AND APPROVALS FROM THE CITY AND COUNTY ENGINEERS AND ARCHITECTS BEFORE COMMENCING CONSTRUCTION.
3. CONTRACTOR SHALL BE RESPONSIBLE FOR OBTAINING ALL NECESSARY PERMITS AND APPROVALS FROM THE CITY AND COUNTY ENGINEERS AND ARCHITECTS BEFORE COMMENCING CONSTRUCTION.

INTERIOR FINISH KEY

ROOM NAME, ROOM NUMBER, ROOM FINISH, WALL FINISH, BASE MATERIAL.

PAINT SCHEDULE

BASE OF DESIGN: SEAMLESS WALLPAPER, INTERIOR PAINT SYSTEMS, ROUGH WALL BOARD (TYPICAL).

PAINT SCHEDULE

BASE OF DESIGN: SEAMLESS WALLPAPER, INTERIOR PAINT SYSTEMS, ROUGH WALL BOARD (TYPICAL).

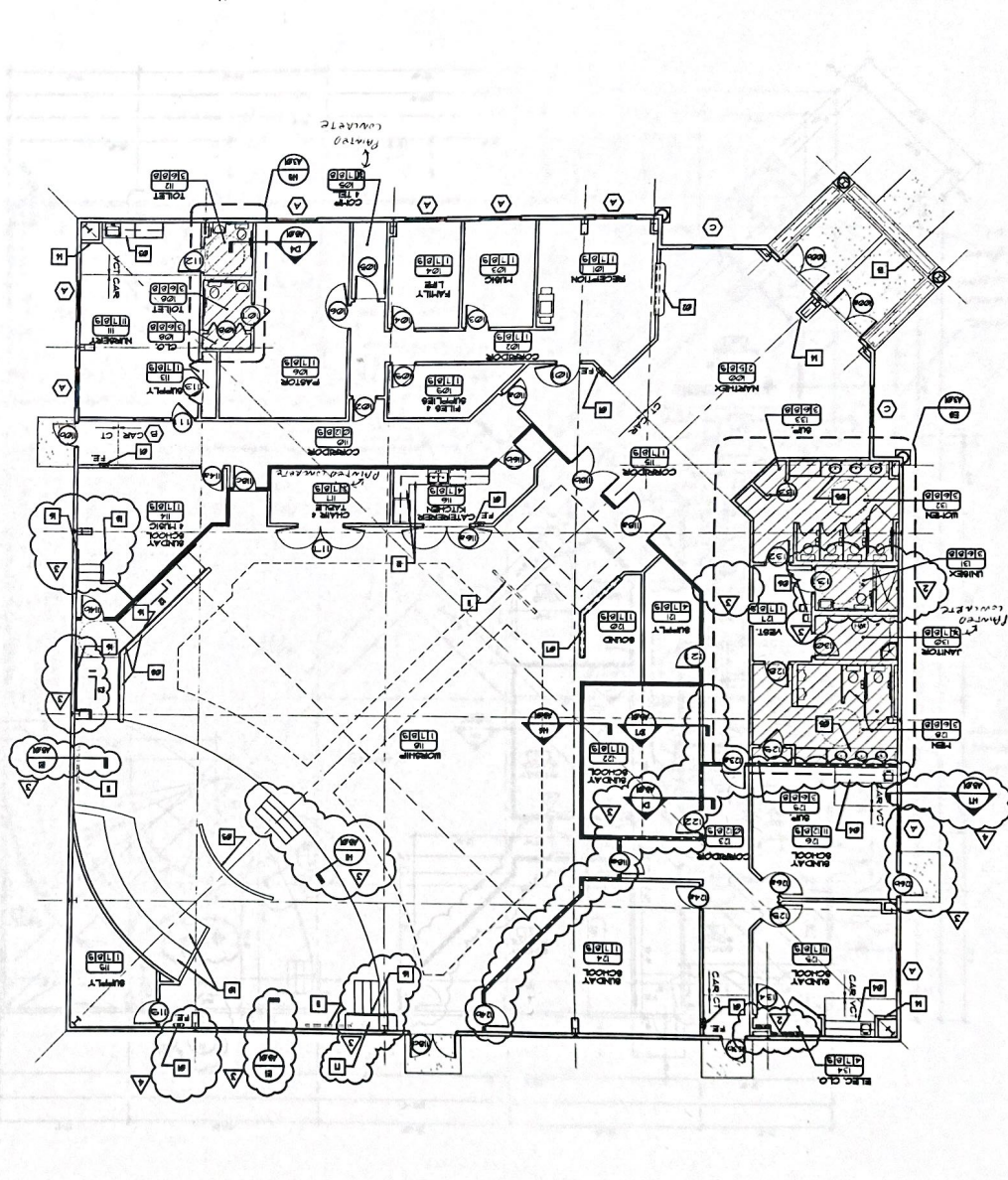
PAINT SCHEDULE

BASE OF DESIGN: SEAMLESS WALLPAPER, INTERIOR PAINT SYSTEMS, ROUGH WALL BOARD (TYPICAL).

PAINT SCHEDULE

BASE OF DESIGN: SEAMLESS WALLPAPER, INTERIOR PAINT SYSTEMS, ROUGH WALL BOARD (TYPICAL).

SCALE: 1/4" = 1'-0"
 ARCHITECTURAL FLOOR PLAN
 THIS IS CONSTRUCTION DOCUMENT

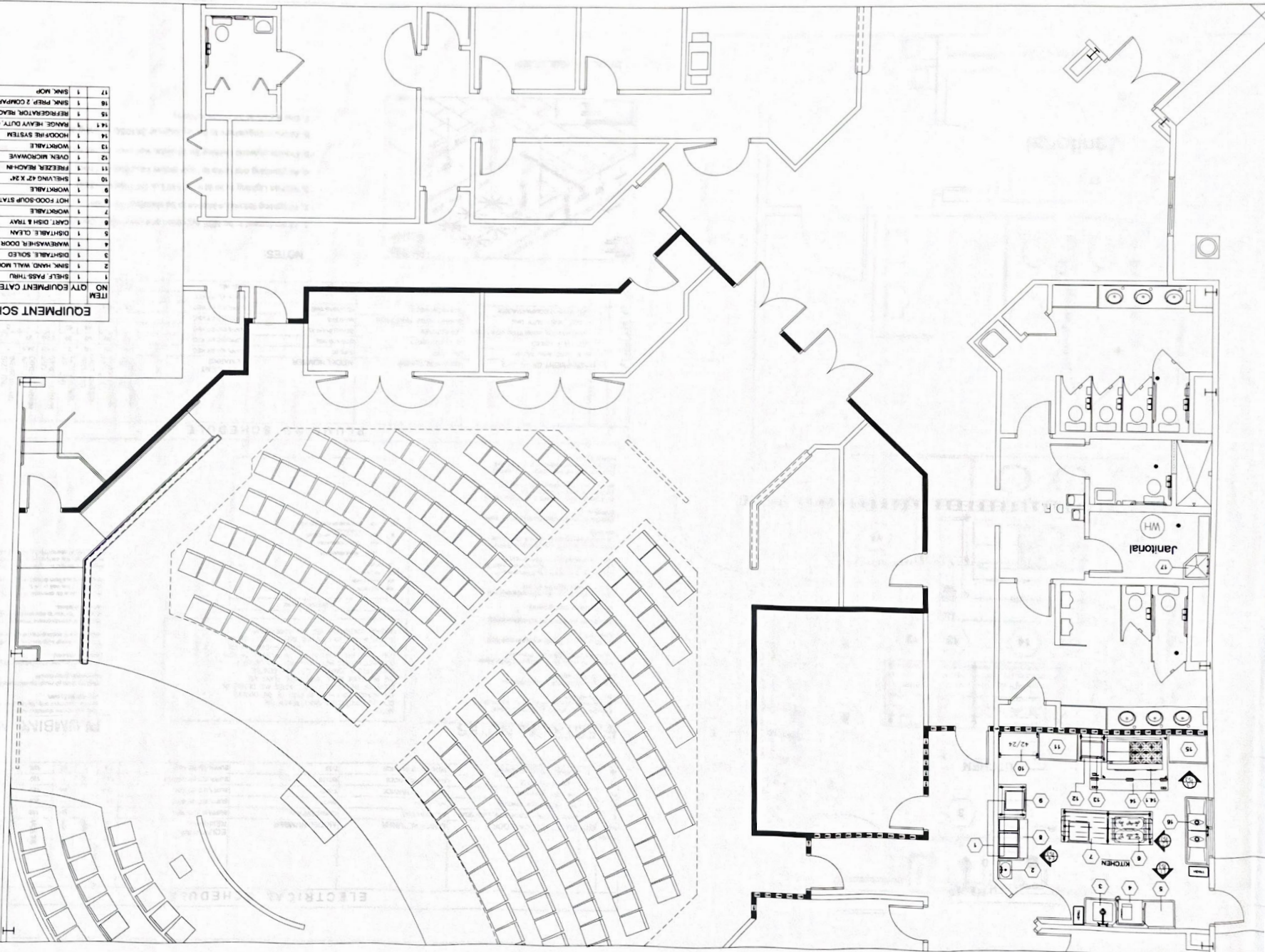


02-01771

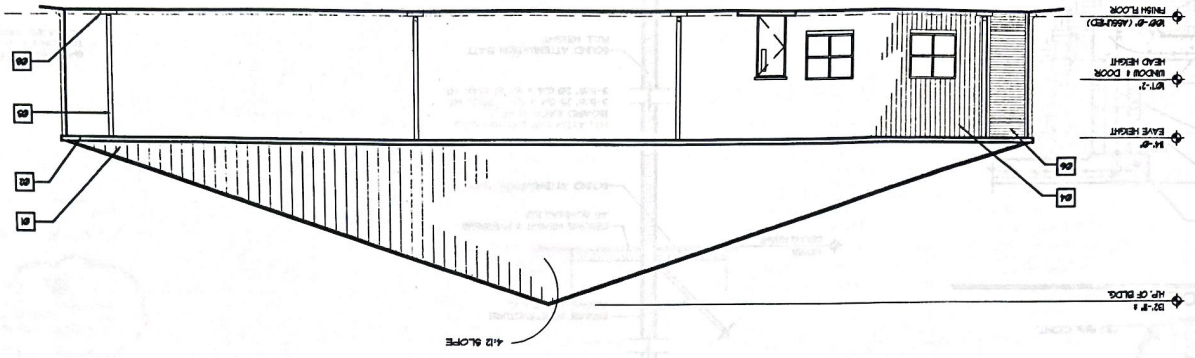
Shower
 Delete

EQUIPMENT SCHEDULE

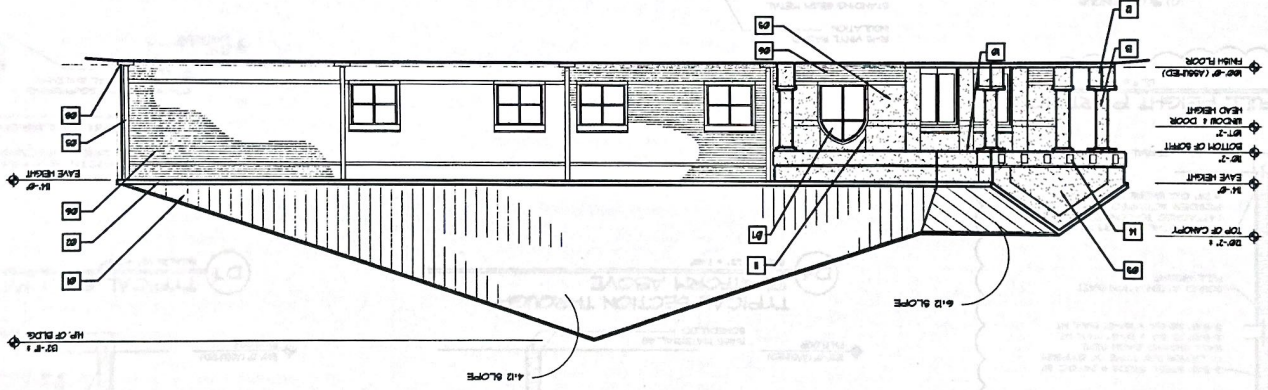
ITEM	NO.	QTY	EQUIPMENT CATEGORY
1	1	1	SHELF, PASS THRU
2	1	1	SINK, HAND, WALL MOUNT
3	1	1	DISPENSIBLE, SOLED
4	1	1	WASHWASHER, DOOR TYPE, LOW TEMP
5	1	1	DISPENSIBLE, CLEAN
6	1	1	CART, DISH & TRAY
7	1	1	HOT FOOD, DISP. STATION
8	1	1	WORKTABLE
9	1	1	WORKTABLE
10	1	1	SHELVING, 42" X 24"
11	1	1	FREEZER, REFRIGER
12	1	1	GREEN, MICROWAVE
13	1	1	WORKTABLE
14	1	1	HOODLINE SYSTEM
14.1	1	1	RANGE, HEAVY DUTY, GAS
15	1	1	REFRIGERATOR, REACH IN
16	1	1	SINK, PREP, 2 COMPARTMENTS
17	1	1	SINK, MOP



SOUTH EAST ELEVATION
SCALE: 1/8" = 1'-0"



SOUTH WEST ELEVATION
SCALE: 1/8" = 1'-0"



02-01771

7/6
 ALL WORK SHALL BE IN ACCORDANCE WITH THE CITY OF CHICAGO ORDINANCES AND THE CHICAGO BUILDING CODE. THE CONTRACTOR SHALL BE RESPONSIBLE FOR OBTAINING ALL NECESSARY PERMITS AND APPROVALS FROM THE CITY OF CHICAGO. THE CONTRACTOR SHALL BE RESPONSIBLE FOR OBTAINING ALL NECESSARY PERMITS AND APPROVALS FROM THE CITY OF CHICAGO. THE CONTRACTOR SHALL BE RESPONSIBLE FOR OBTAINING ALL NECESSARY PERMITS AND APPROVALS FROM THE CITY OF CHICAGO.

