

FOR LEASE

1300 ETHAN WAY

SACRAMENTO, CA



NEWMARK

RICH ELLSWORTH

916-569-2343

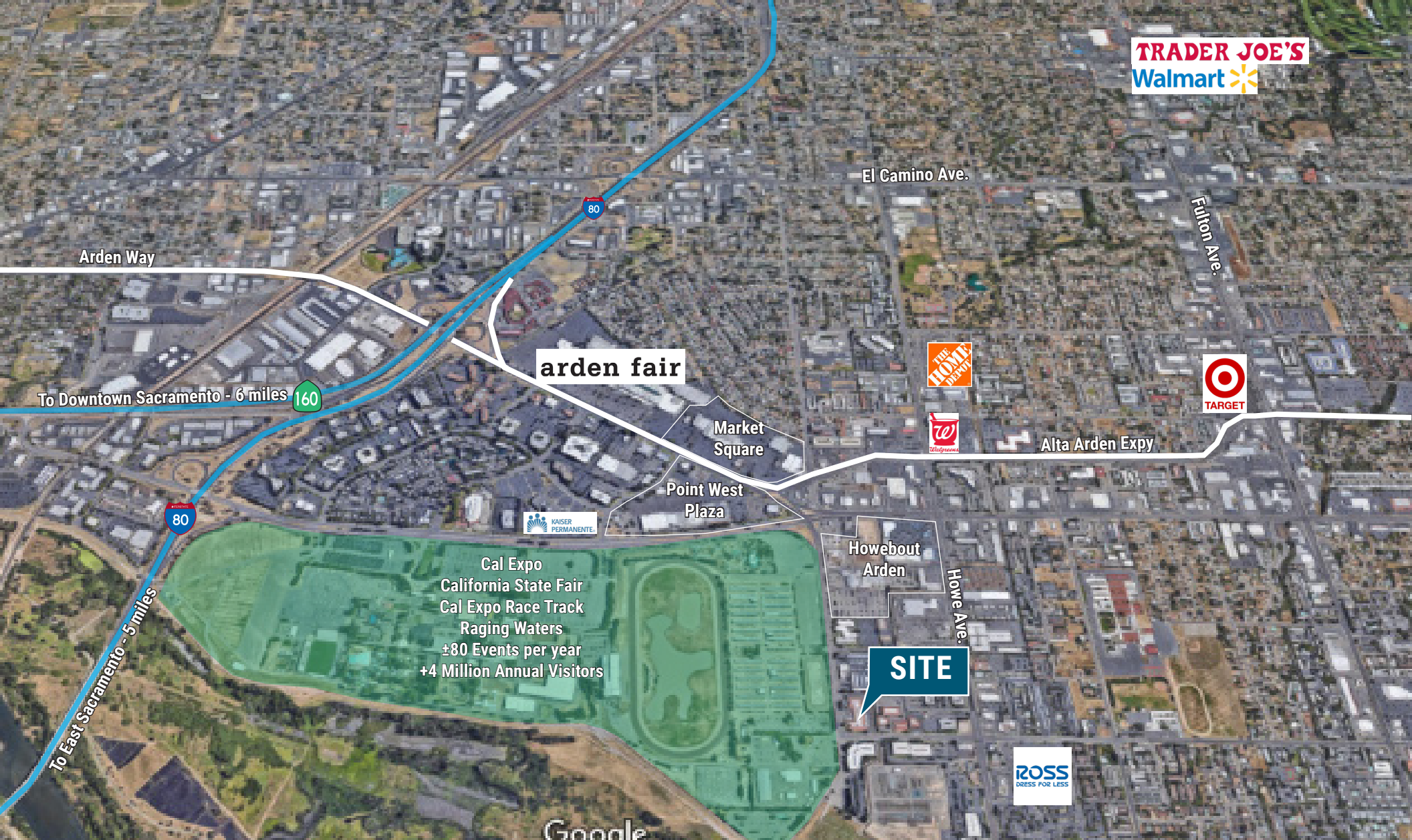
rich.ellsworth@nrmk.com

CA RE License #00873637



LEASE RATE: \$1.75/RSF, FULL SERVICE

- 5% Commission to procuring agent (excludes existing Tenant & lease renewals)
- Attractive one-story buildings with beautifully renovated common areas, landscaping and signage
- Flexible GC (General Commercial) zoning catering to a multitude of tenants
- Some offices have restroom(s) in suite
- Competitive lease rates and tenant improvements available
- Excellent location, close to Capital City, Freeway and Highway 50
- Less than one mile to Arden Fair Mall, Doubletree Hotel, banking, restaurants and other retail support services



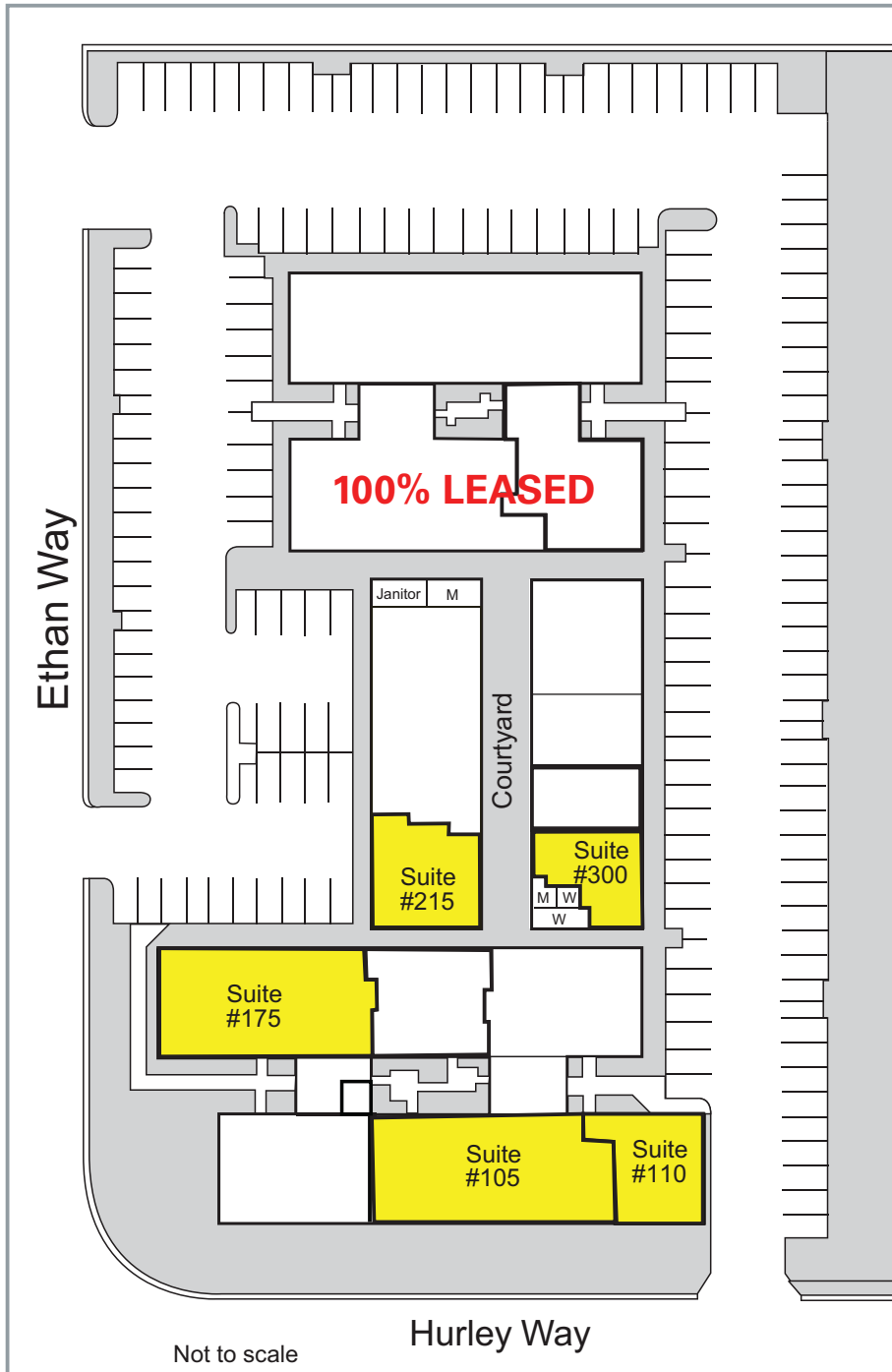
Arden Fair Mall is over 400,000 SF and offers shopping convenience to Macy's, Apple, Michael Kors and more

Point West Plaza offers over 120,000 SF of retail convenience such as Hobby Lobby, Kohl's, Davids Bridal and more

Market Square is a +200,000 SF retail destination and houses such retail giants as United Artists, Barnes and Noble, Ulta and more

HoweboutArden houses Century Theatres, Nordstrom Rack, Homegoods, The Container Store and more

AVAILABLE SPACES



1300 ETHAN WAY

Suite 105: ±3,531 RSF

Suite 110: ±1,723 RSF

Suites 105 & 110: ±5,254 RSF

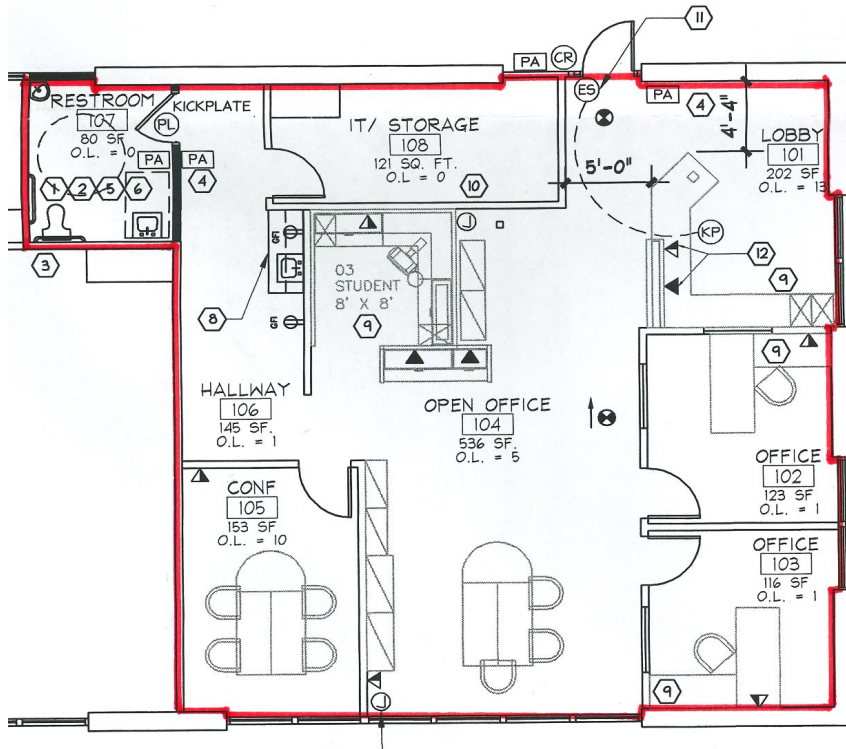
Suite 175: ±4,625 RSF

Suite 215: ±2,128 RSF

Suite 300: ±1,229 RSF

1300

ETHAN WAY



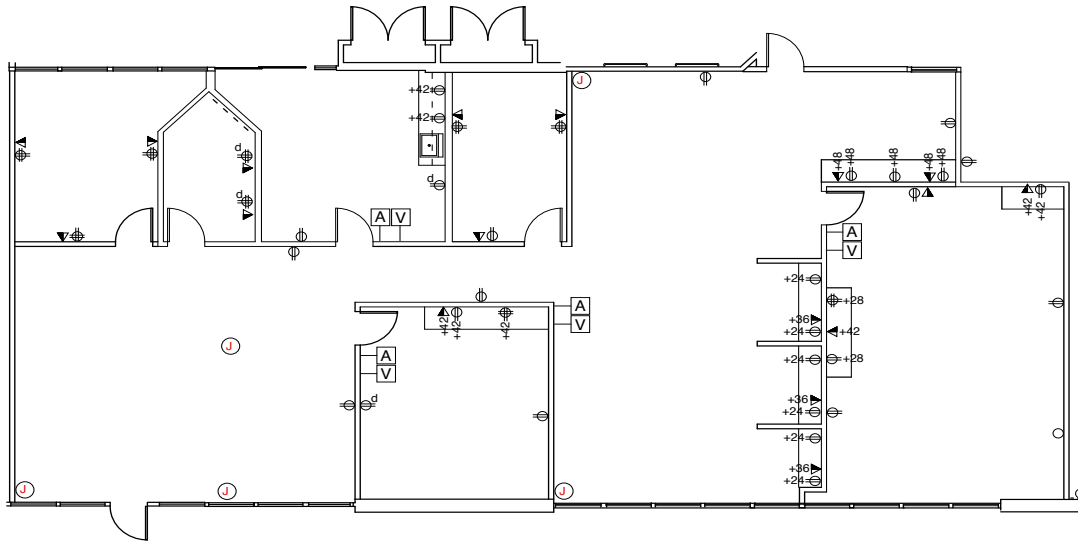
Suite 110: ±1,723 RSF



FLOOR PLAN

1300

ETHAN WAY

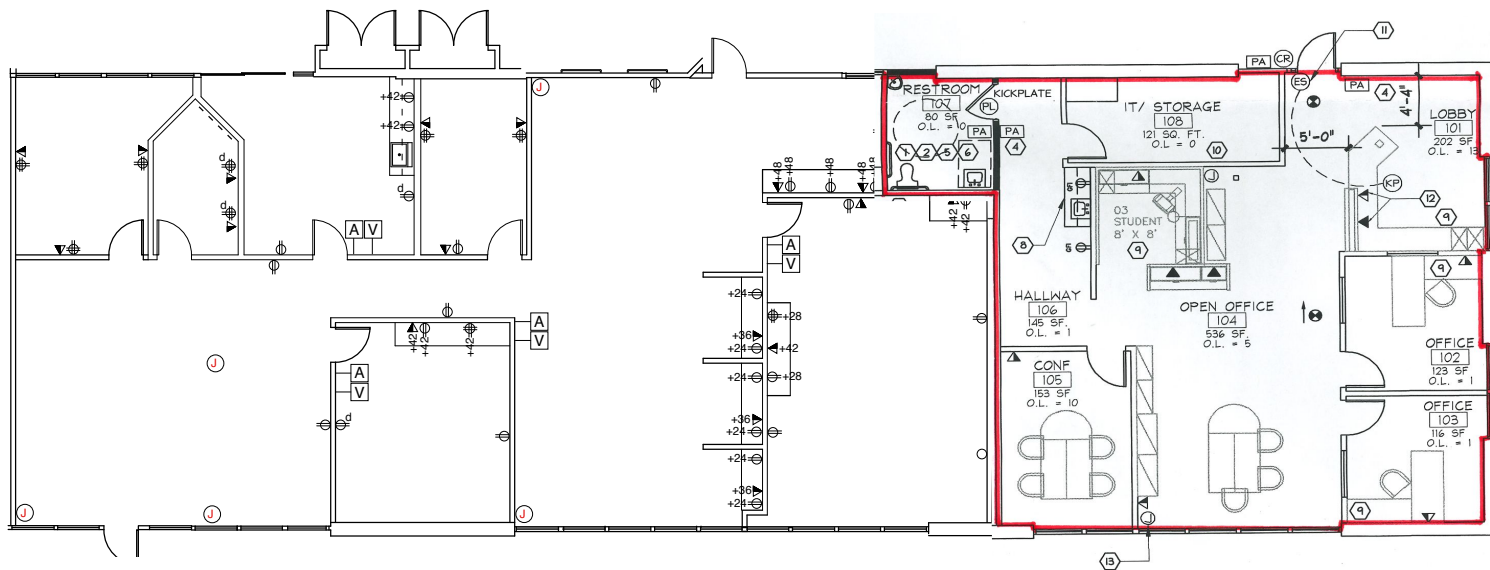


Suite 105: ±3,531 RSF



1300

ETHAN WAY



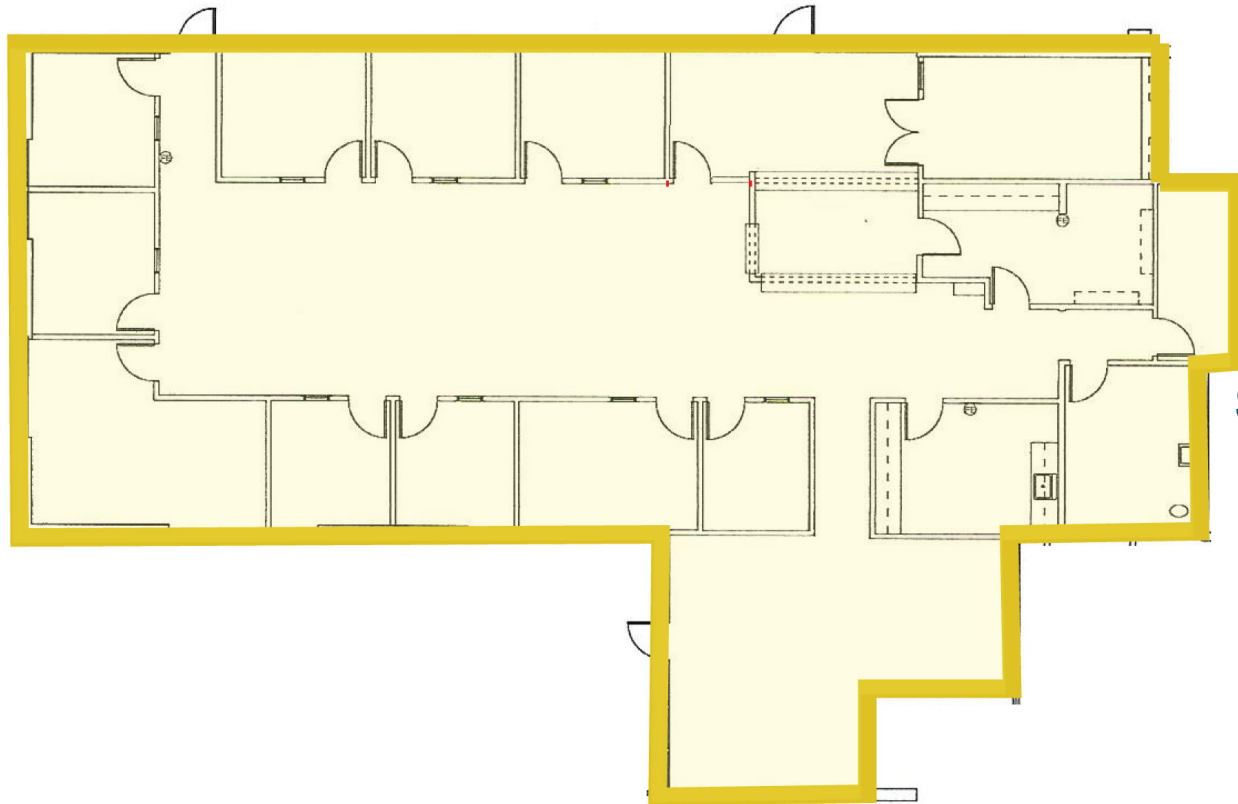
Suites 105 & 110: ±5,254 RSF



FLOOR PLAN

1300

ETHAN WAY



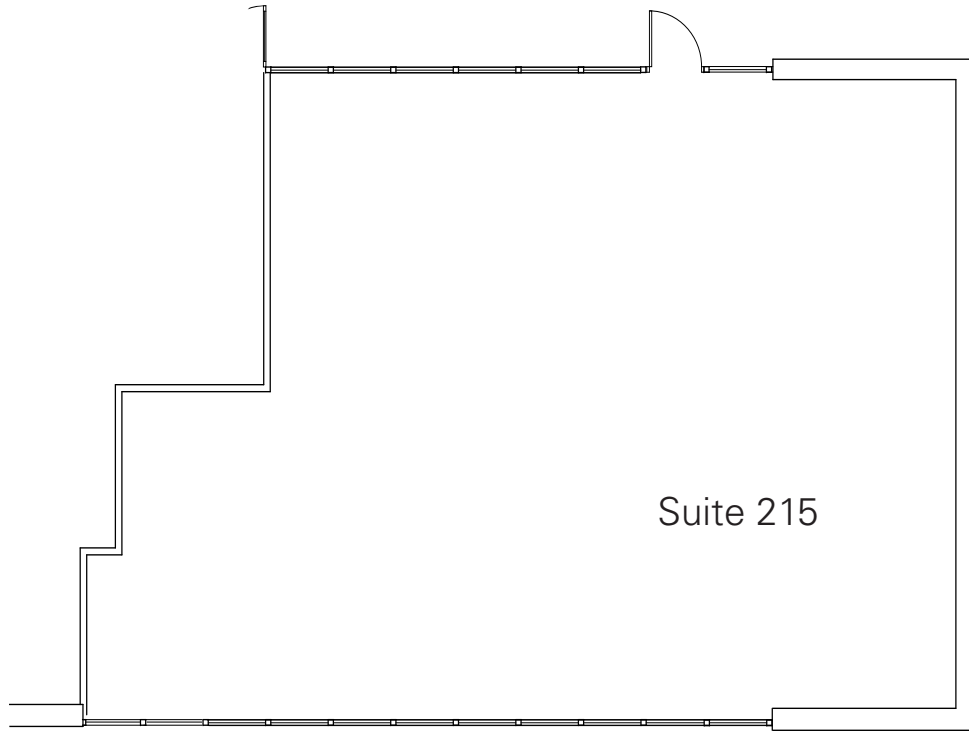
Suite 175: ±4,625 RSF



FLOOR PLAN

1300

ETHAN WAY



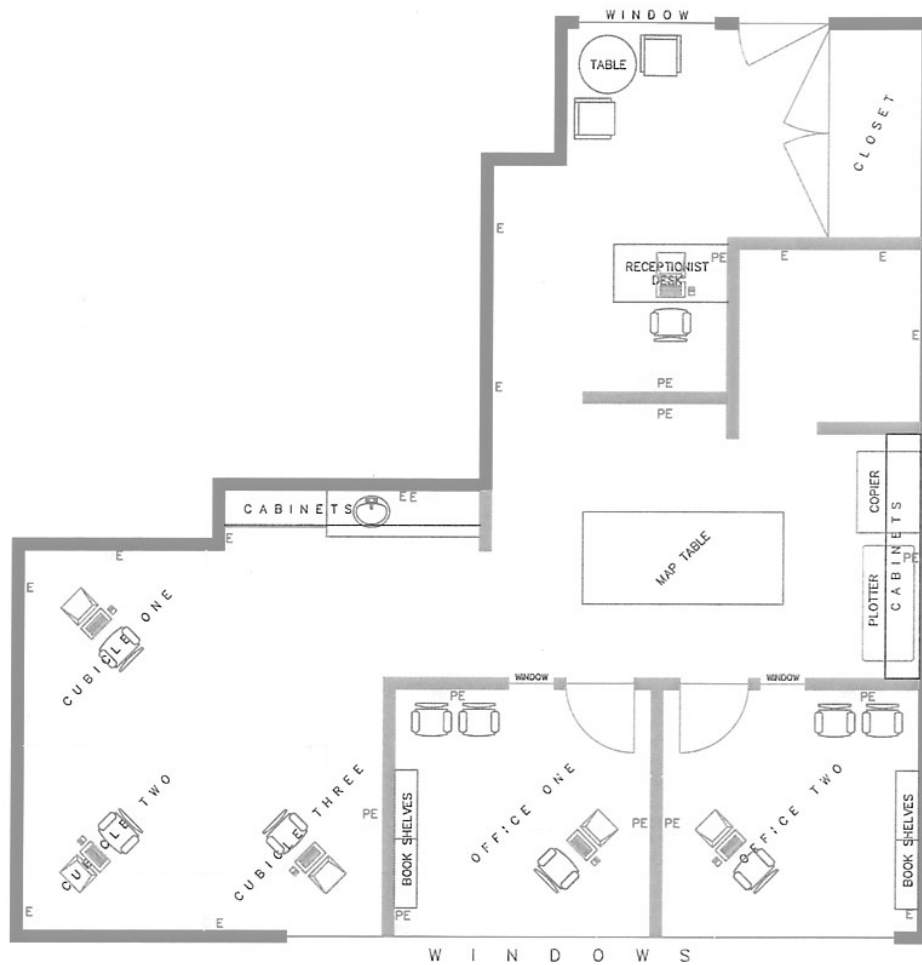
Suite 215: ±2,128 RSF



FLOOR PLAN

1300

ETHAN WAY



Suite 300: ±1,229 RSF



PHOTO GALLERY



1300 ETHAN WAY

SACRAMENTO, CA



The distributor of this communication is performing acts for which a real estate license is required. The information contained herein has been obtained from sources deemed reliable but has not been verified and no guarantee, warranty or representation, either express or implied, is made with respect to such information. Terms of sale or lease and availability are subject to change or withdrawal without notice.

02/26

NEWMARK

RICH ELLSWORTH

916-569-2343

rich.ellsworth@nmrk.com

CA RE License #00873637