 **JLL** SEE A BRIGHTER WAY

For sublease

149 W Michigan St, Orlando, FL
17,985 RSF on 0.43 Acres

Property features

- 17,985± SF available
- 7,000± SF of office and secured rooms
- 19' clear height
- 3 - 11'5" x 15' grade doors
- Front load
- Concrete block construction
- Built in 1955
- 0.43 acres
- Zoned I-G/T/SP, City of Orlando
- 0.68 acres of fully fenced and paved parking area on the east side of Kunze Avenue
- Sublease thru July 31, 2025
- \$10.95/s.f., NNN

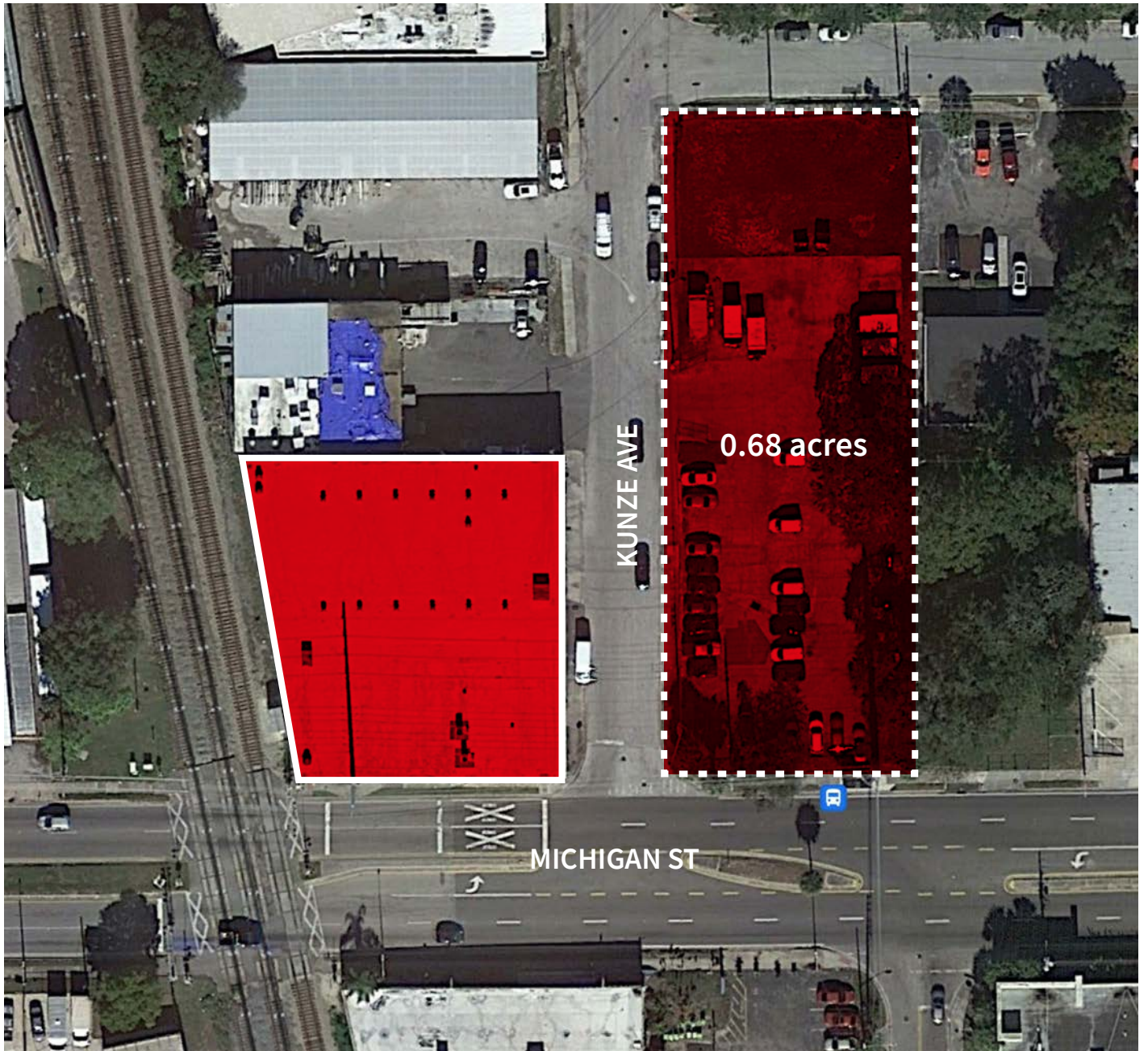


	30 minutes	60 minutes	120 minutes
Total population	1,999,733	3,685,261	9,289,277
Total households	740,934	1,393,761	3,677,455
Average HH income	\$100,198	\$93,885	\$92,978
Total Businesses	98,099	147,812	365,634
Total Employees	1,058,696	1,538,943	3,736,138

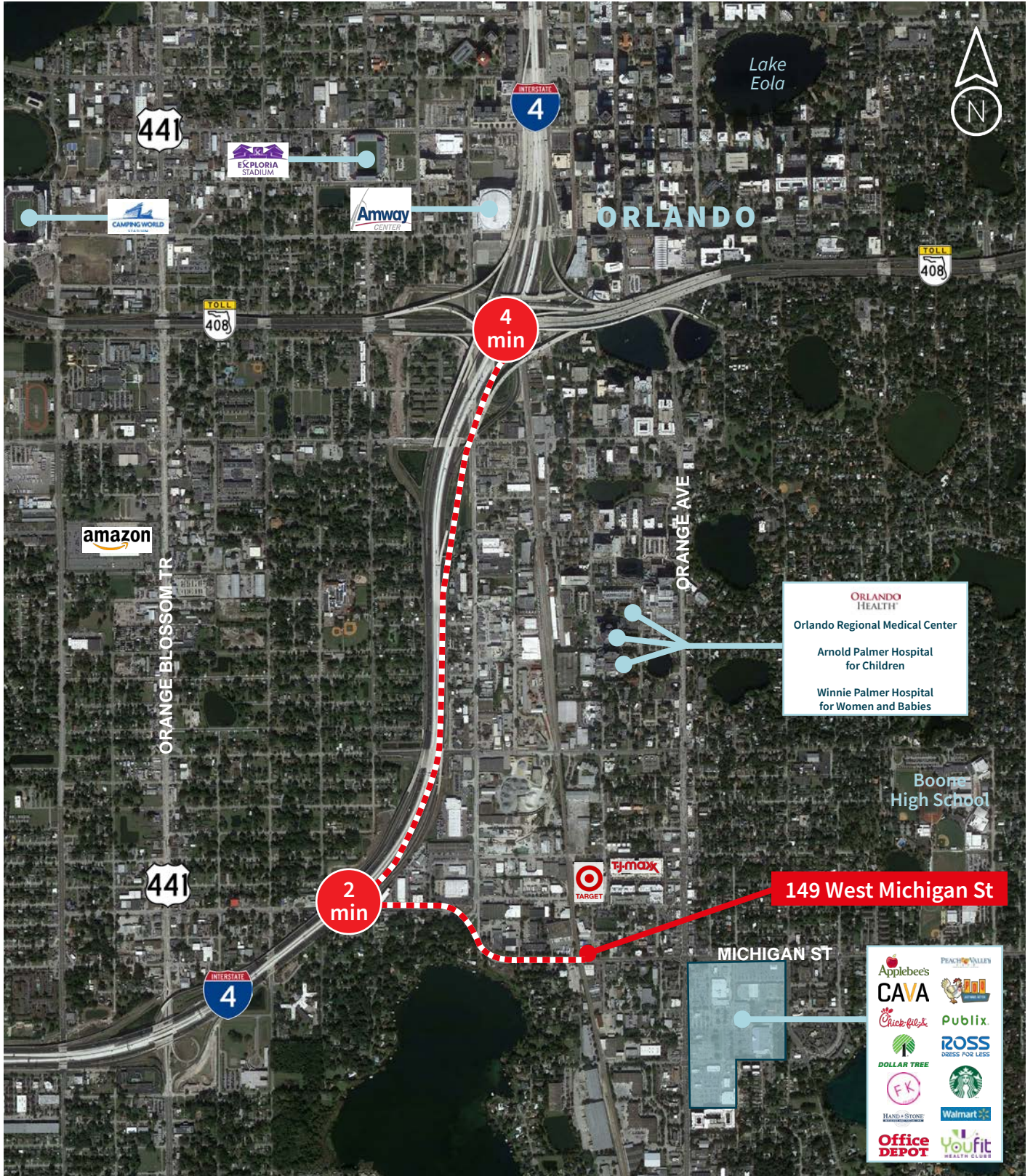
Floor plan



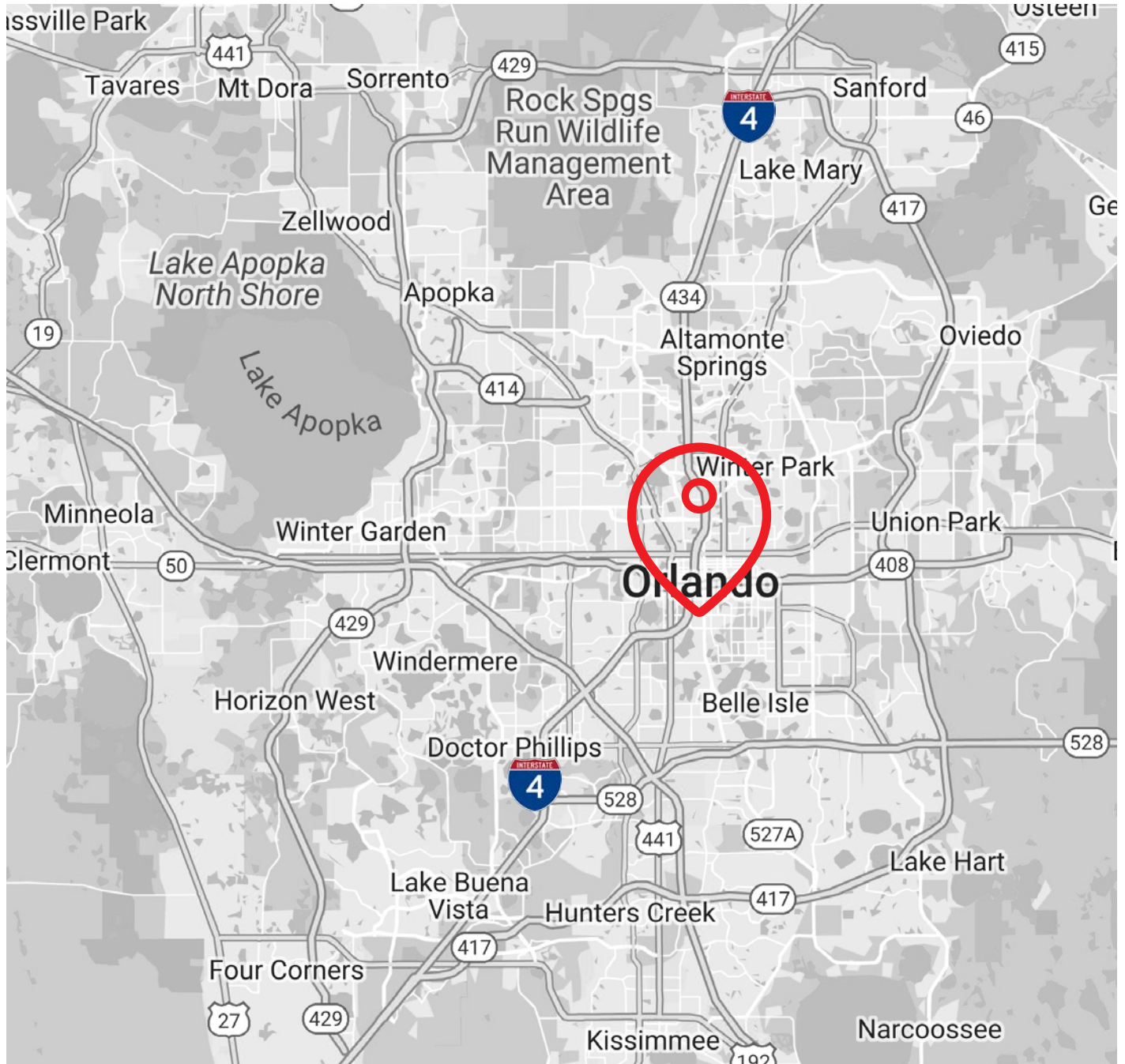
Property aerial



Access and amenities



Location



The property is located minutes from Interstate 4, UF Health Cancer Center, Arnold Palmer Hospital for Children, Winnie Palmer Hospital for Women and Babies, Boone High School, SoDo, Amway Center, Camping World Stadium, Exploria Stadium, and downtown Orlando's numerous restaurants and nightclubs.

JLL**Cameron Montgomery***Associate*

Cameron.Montgomery@jll.com

+1 407 982 8650

Kristin Bailey*Associate*

Kristin.Bailey@jll.com

+1 407 930 7103

Although information has been obtained from sources deemed reliable, JLL does not make any guarantees, warranties or representations, express or implied, as to the completeness or accuracy as to the information, assumptions or estimates used are for example only. There may be differences between projected and actual results, and those differences may be material. JLL does not accept any liability for any loss or damages arising from this information. If the recipient of this information has signed a confidentiality agreement with JLL regarding this matter, this information is subject to the terms of that agreement. ©2023. Jones Lang LaSalle Brokerage, Inc.

Jones Lang LaSalle Brokerage, Inc., a licensed real estate broker across the US | 250 South Orange Avenue, Suite 700P, Orlando, FL 32801