

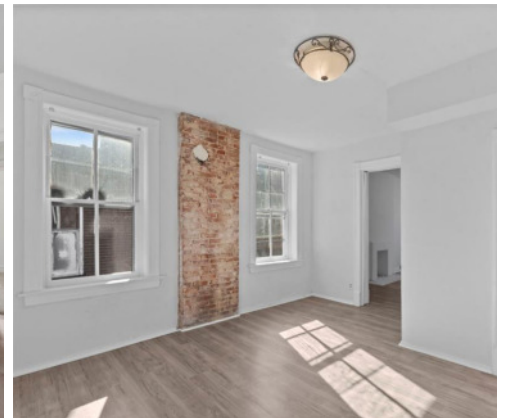


3534 Pennsylvania Avenue St Louis, MO 63118

0 **0** **3,356**
BED BATH SQ FT

OFFERED AT:
\$225,000

Attention Investors. Looking to add to your portfolio? Looking for a deal? Check out this 4-unit investment property in Gravois Park. Two blocks south of popular Cherokee Street! These historic units offer large windows, high ceilings and large rooms. Each unit has it's own private front door and bonus room in the rear. Upstairs units have front private bedrooms! Two units, an upper and lower unit, are open for viewing and ready for occupancy. Two left units are rented at \$750 each! 2 garage spaces in the rear could be rented for extra income. Priced to sell. Needs some TLC, but priced accordingly. Come quick, 4-plexes in the \$200's are a rare find!



Anna Garcia
314-353-0336 - Office
garciaproperties.com

