

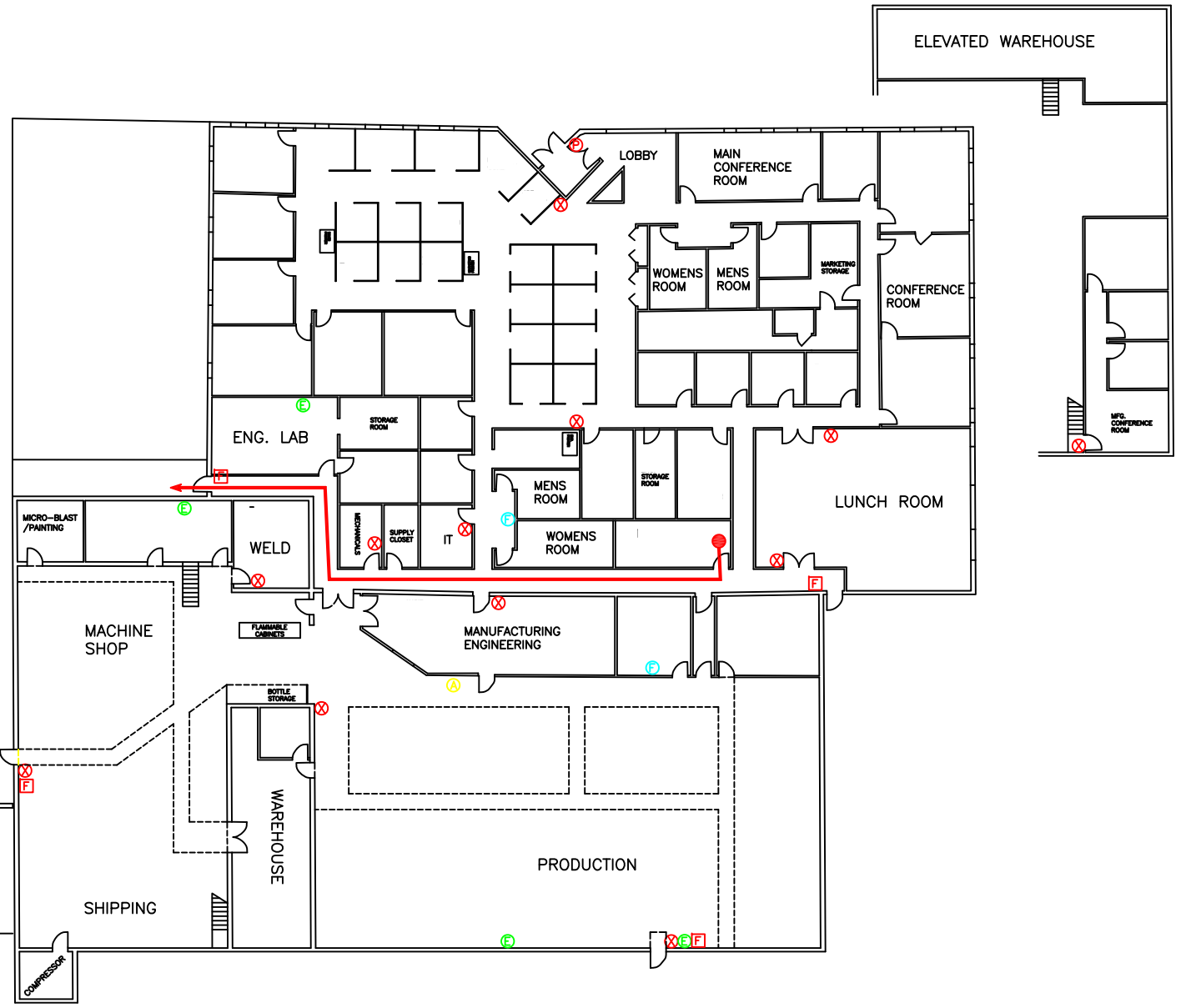
PARKING LOT

FIRE ALARM RALLY LOCATION

DUMPSTER

SHIPPING RAMP

COMPRESSOR



199 FIRE TOWER DRIVE, TONAWANDA, NY 14150

FIRE EXTINGUISHER	X
EYE WASH STATION	E
AED/BSI	A
FIRST AID KIT	F
FIRE ALARM PANEL	P
FIRE ALARM PULLS	F

UNLESS OTHERWISE SPECIFIED
DIMENSIONS ARE IN INCHES

TOLERANCES ON: FRACTIONS ±1/64
DECIMALS—
XXX ±.01
XXX ±.005
ANGLES ±1/2°

63/4 MACHINE FINISH (ALL SURFACES)
REMOVE BURRS & BREAK SHARP EDGES
015 MAX.
MACHINE FILETS TO .015 R. MAX.
ALL DIAMETERS TO BE CONCENTRIC
WITHIN .010 F.L.M.
CHAMFER ALL MALE THREADS 45°±5°
TO MINOR DIAMETER
C/SINK ALL FEMALE THREADS 90°±10°
TO MAJOR DIAMETER

REVISIONS			
LET	DATE	BY	ECH
C	3/12/19	SN	
D	4/2/19	SN	
E	4/26/19	SN	
F	6/27/19	SN	
G	11/5/19	SN	
H	2/13/20	SN	

SKETCH, BUILDING LAYOUT,
199 FIRE TOWER DRIVE

SCALE N/A MATERIAL - DRAFTSMAN SMN DATE 4/19/16
SEE ENGINEERING CHANGE NOTICE (ECH) FOR DRAWING APPROVALS

THIRD ANGLE PROJECTION

Viatran CORPORATION
TONAWANDA, NEW YORK, USA

DRAWING NO. SK181003-1