

**FOR
LEASE**

**10940 FAIR OAKS BLVD,
FAIR OAKS, CA**

+/- 1,482 SQ. FT. OFFICE/RETAIL SUITE AVAILABLE

**NOW OFFERING:
PROMOTIONAL RENT
OF \$0.90 PSF, NNN
FOR YEAR 1**

**3D Tour
Click Here**



CHASE BURKE
916.705.8132
CHASE@ROMECPRE.COM
DRE: 01879336

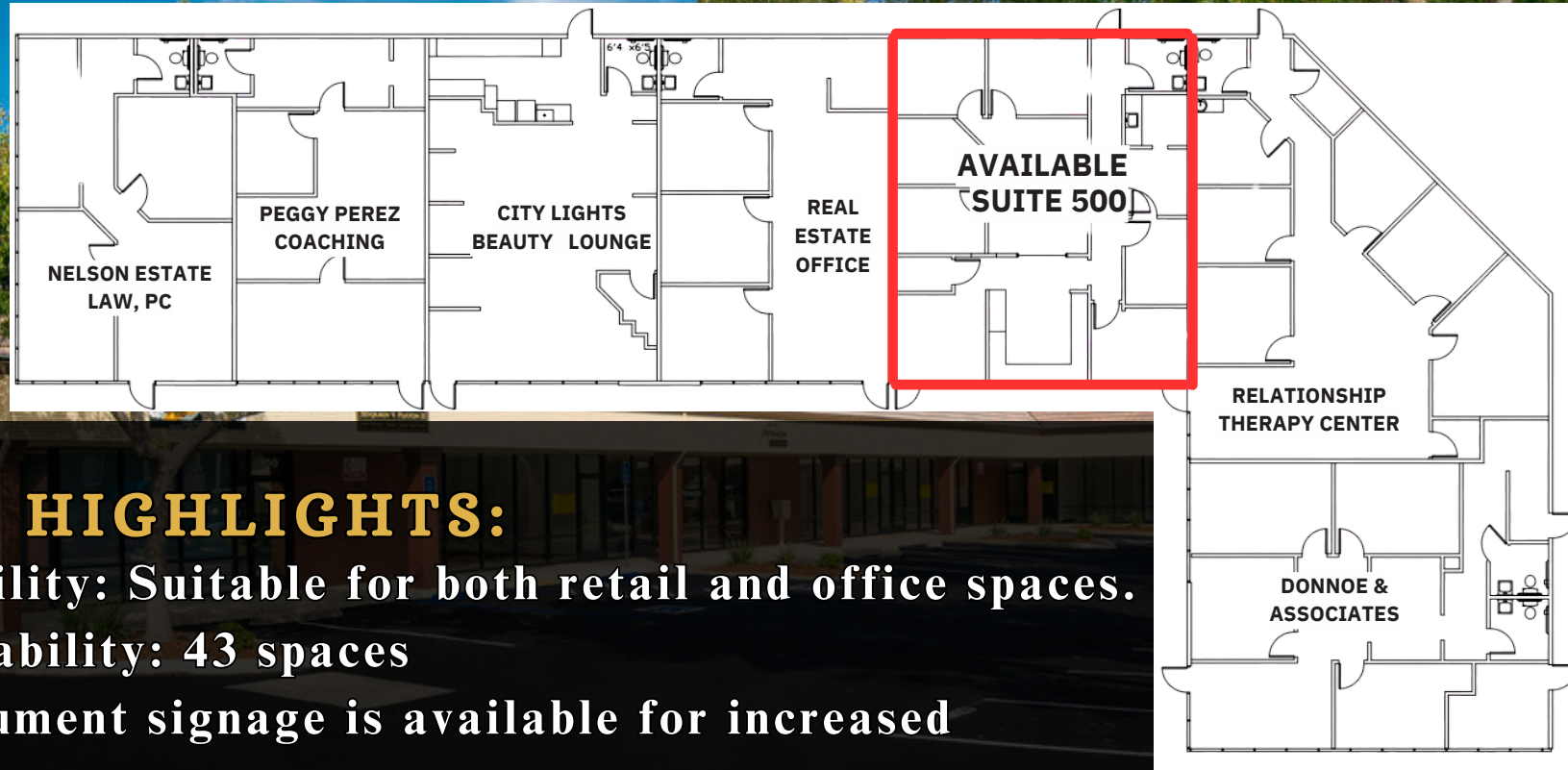
ANDY JONSSON
916.813.8409
ANDY@ROMECPRE.COM
DRE: 02076108

STANISLAV YEVTUSHENKO
279.386.8762
STAN@ROMECPRE.COM
DRE: 02167493

ROME
REAL ESTATE GROUP

WOODMONT PLAZA

SUITE	SIZE	LEASE RATE	SPACE NOTES
500	+/- 1,482 SF	\$0.90 PSF, \$0.59 PSF NNN	Former church space available for lease

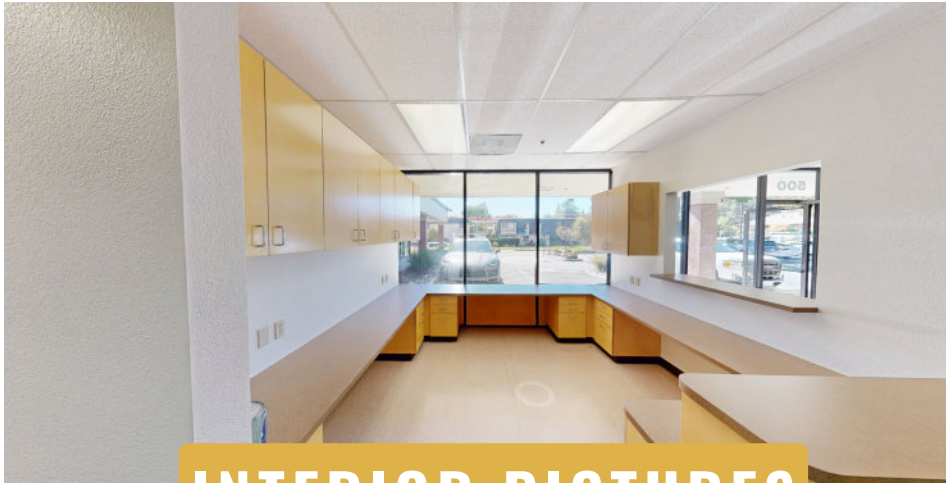


PROPERTY HIGHLIGHTS:

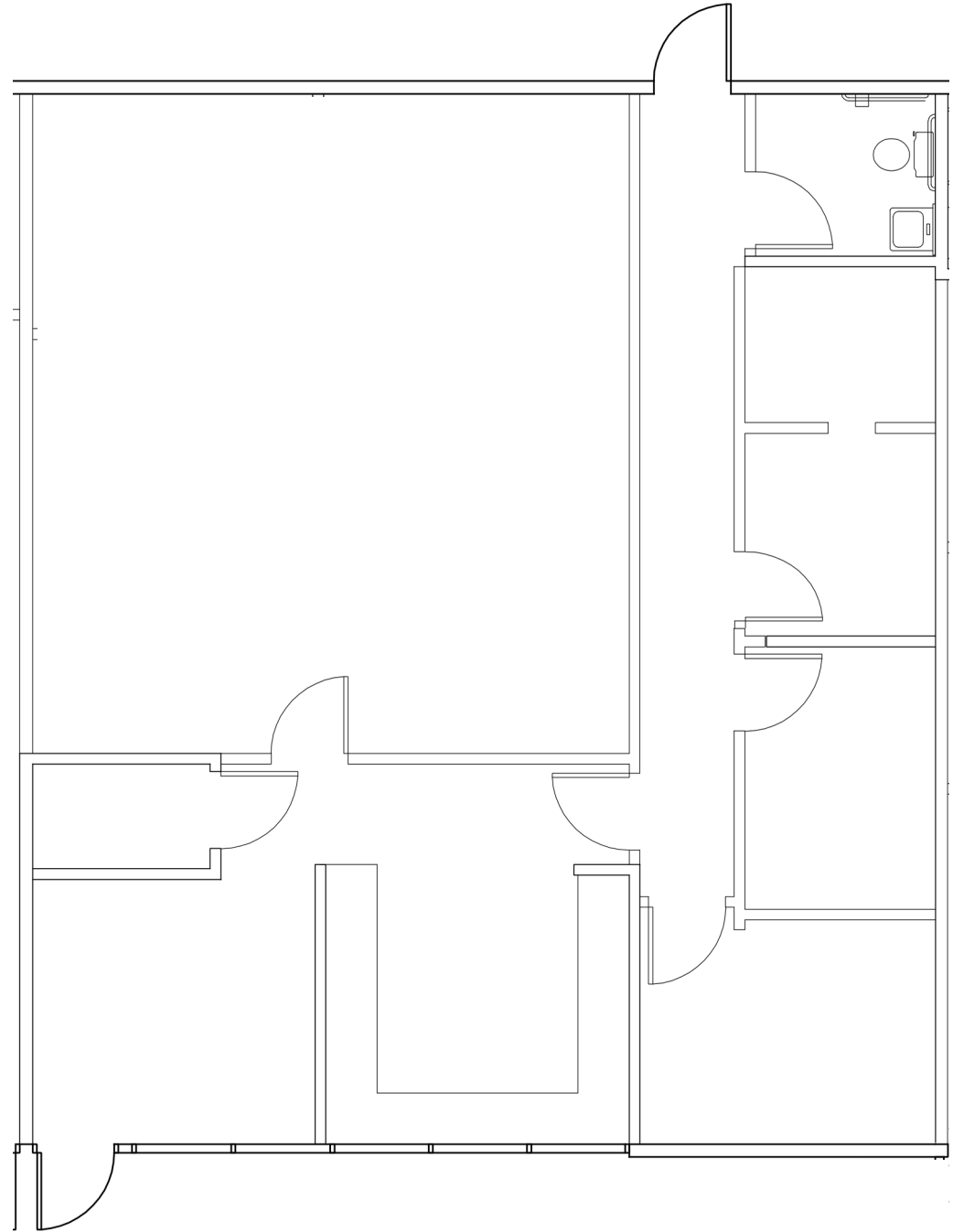
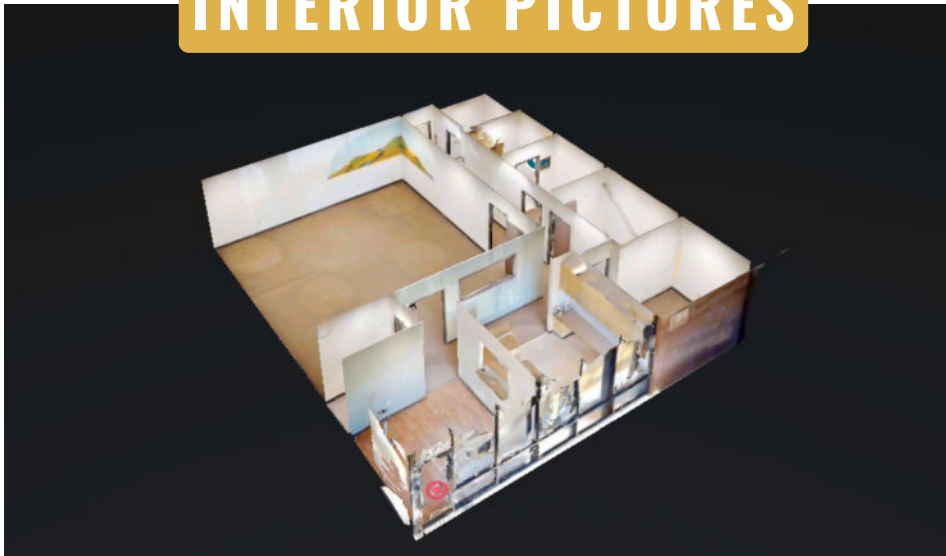
- **Zoning Flexibility:** Suitable for both retail and office spaces.
- **Parking Availability:** 43 spaces
- **Signage:** Monument signage is available for increased visibility.
- **Prime Location:** Positioned just south of the intersection of Sunset Avenue and Fair Oaks Boulevard, ideal for businesses that benefit from established residential areas.
- **Landscaping:** Features attractive, mature landscaping.
- **Nearby Community:** One block away from the newly developed 17-home Woodmont gated community.

FLOOR PLAN - SUITE 500

3D Tour
Click Here



INTERIOR PICTURES



AERIAL PHOTO



DEMOGRAPHIC SUMMARY REPORT

10940 FAIR OAKS BLVD, FAIR OAKS, CA 95628



POPULATION

2023 ESTIMATE

1-MILE RADIUS	11,345
3-MILE RADIUS	114,825
5-MILE RADIUS	289,773



HOUSEHOLD INCOME

2023 AVERAGE

1-MILE RADIUS	\$125,936.00
3-MILE RADIUS	\$106,127.00
5-MILE RADIUS	\$97,055.00

POPULATION

2028 PROJECTION

1-MILE RADIUS	11,629
3-MILE RADIUS	117,536
5-MILE RADIUS	296,535

HOUSEHOLD INCOME

2023 MEDIUM

1-MILE RADIUS	\$93,941.00
3-MILE RADIUS	\$82,936.00
5-MILE RADIUS	\$76,223.00



POPULATION

2023 BY ORIGIN

	1-MILE RADIUS	3-MILE RADIUS	5-MILE RADIUS
WHITE	9,668	93,865	231,101
BLACK	325	4,512	14,679
HISPANIC ORIGIN	1,272	17,127	46,058
AM. INDIAN & ALASKAN	124	1,355	3,722
ASIAN	557	7,763	20,392
HAWAIIAN & PACIFIC ISLAND	21	663	1,863
OTHER	650	6,668	18,015



Chase Burke

**PARTNER | RETAIL BROKERAGE
AND INVESTMENT SALES**

916.705.8132

chase@romecre.comD

DRE: 01879336

CONTACT US!

FOR MORE INFORMATION ABOUT THIS SUITE



(916) 932-2199



@ROMECREGROUP



2901 K STREET, SUITE 306, SACRAMENTO, CA 95816

101 PARKSHORE DRIVE, SUITE 100, FOLSOM, CA 95630



Andy Jonsson

**PARTNER | RETAIL BROKERAGE
AND INVESTMENT SALES**

916.813.8409

andy@romecre.com

DRE: 02076108



Stan Yevtushenko

BROKER ASSOCIATE

279.386.8762

stan@romecre.com

DRE: 02167493



CHASE@ROMECRE.COM

ANDY@ROMECRE.COM

STAN@ROMECRE.COM



916.7-Disclaimer: The information contained herein has been obtained from sources Broker believes to be reliable. However, Broker cannot guarantee, warrant or represent its accuracy and all information is subject to error, change, or withdrawal. An interested party and their advisors should conduct an independent investigation of the property to determine to your satisfaction the suitability of the property for your needs.