

OFFICE

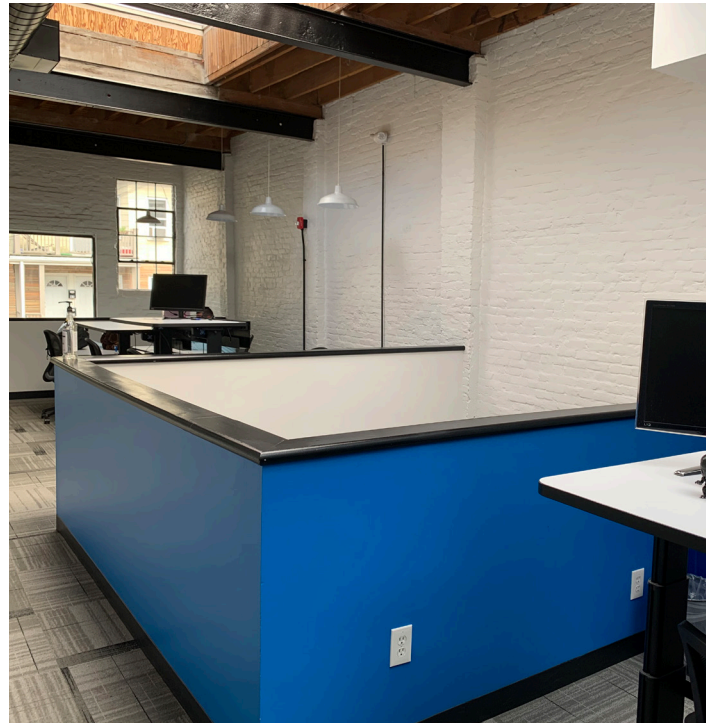
3,778 RSF AVAILABLE FOR SUBLEASE

50 GROVE STREET

SOMERVILLE, MA 02114

HIGHLIGHTS

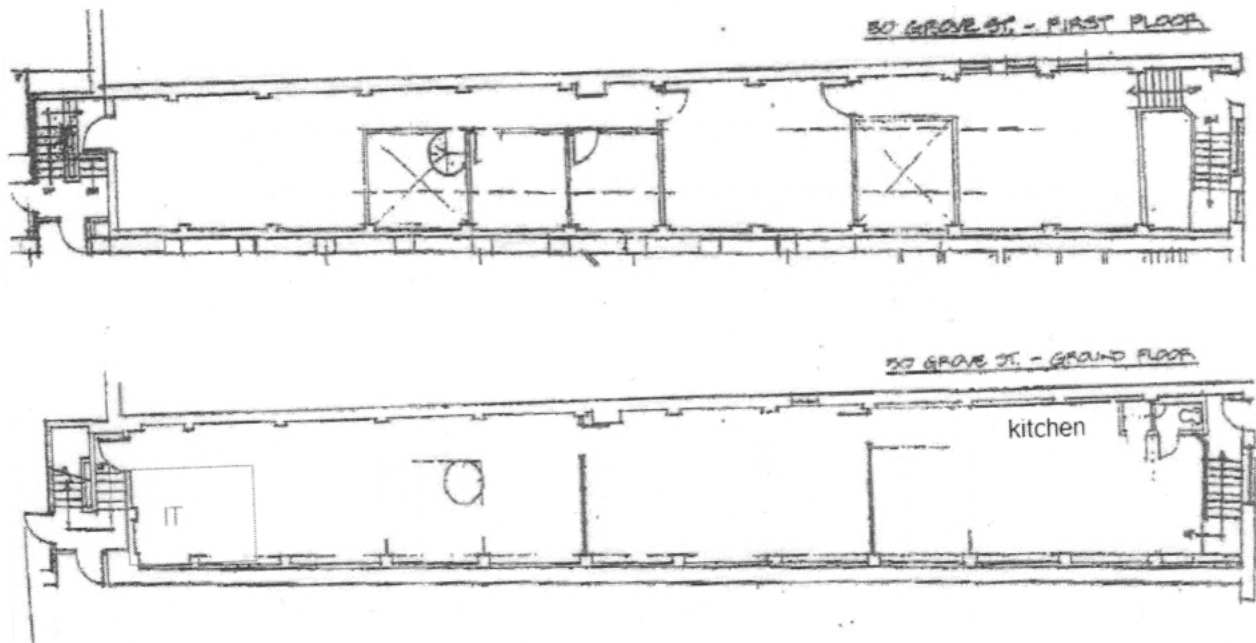
- » 3,778 RSF located in a two story brick and beam office building
- » Within close proximity to Davis Square, Porter Square, public transportation, local restaurants and retail
- » Configuration includes 25 desks, four (4) meeting rooms, kitchen and IT/storage closet
- » IT connection in place
- » Building signage available
- » Occupancy on or before November 1, 2023
- » Sublease through December 31, 2024 with potential extension through October 30, 2026



All information furnished regarding property for sale, rental or financing is from sources deemed reliable, but no warranty or representation is made to the accuracy thereof and same is submitted to errors, omissions, change of price, rental or other conditions prior to sale, lease or financing or withdrawal without notice. No liability of any kind is to be imposed on the broker herein.

OFFICE

3,778 RSF AVAILABLE FOR SUBLEASE



For more information, please contact:

ERIC SOLEM

Managing Principal / President
esolem@lee-associates.com
617.869.4605

ROBERT M. ELMER

Principal
relmer@lee-associates.com
617.899.0569

All information furnished regarding property for sale, rental or financing is from sources deemed reliable, but no warranty or representation is made to the accuracy thereof and same is submitted to errors, omissions, change of price, rental or other conditions prior to sale, lease or financing or withdrawal without notice. No liability of any kind is to be imposed on the broker herein.