

FOR LEASE

1680 ELK CREEK DR



PROPERTY DETAILS

1680 Elk Creek Drive, Idaho Falls, Idaho 83404

- 6,778 SF professional office available (5,227 SF main & 1,551 SF basement)
- Prime location near Eastern Idaho Regional Medical Center, Mountain View Hospital, and a variety of businesses and amenities
- Main floor: 11 offices, conference room, reception area, 2 bathrooms, kitchenette, charting area, and cubicle area
- Basement: 3 offices, executive office with fireplace, staff lounge, storage room, and restroom
- Built 2017 with modern finishes
- Lease rate: \$20/SF NNN

2025 DEMOS



EST. POPULATION

1 MILE » **9,579**
 3 MILE » **65,284**
 5 MILE » **111,333**



EST. HOUSEHOLDS

1 MILE » **3,481**
 3 MILE » **24,280**
 5 MILE » **40,187**



EST. AVERAGE HH INCOME

1 MILE » **\$125,135**
 3 MILE » **\$104,072**
 5 MILE » **\$105,000**

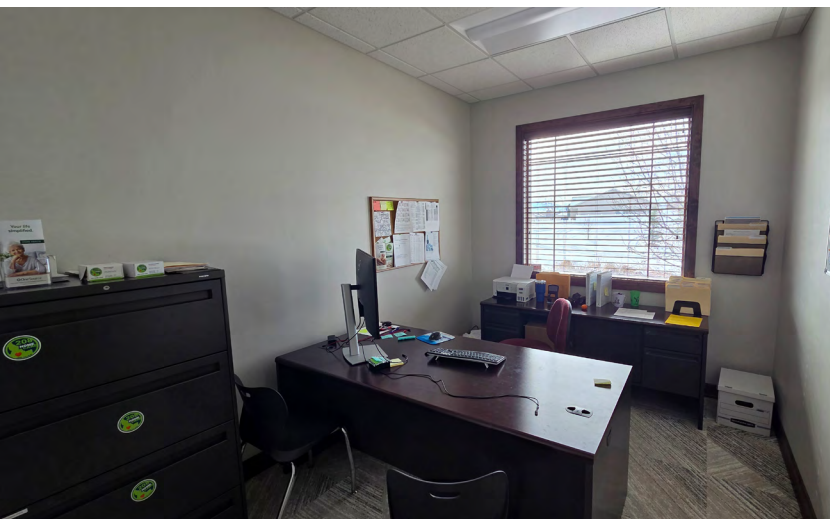
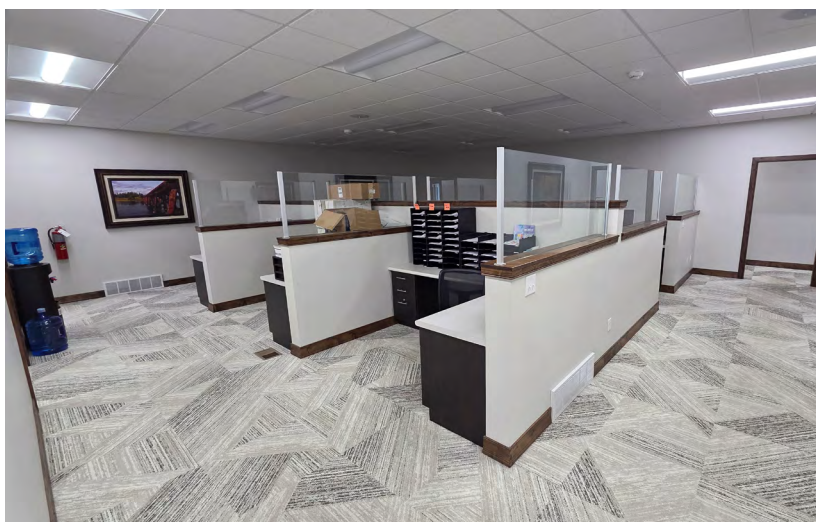
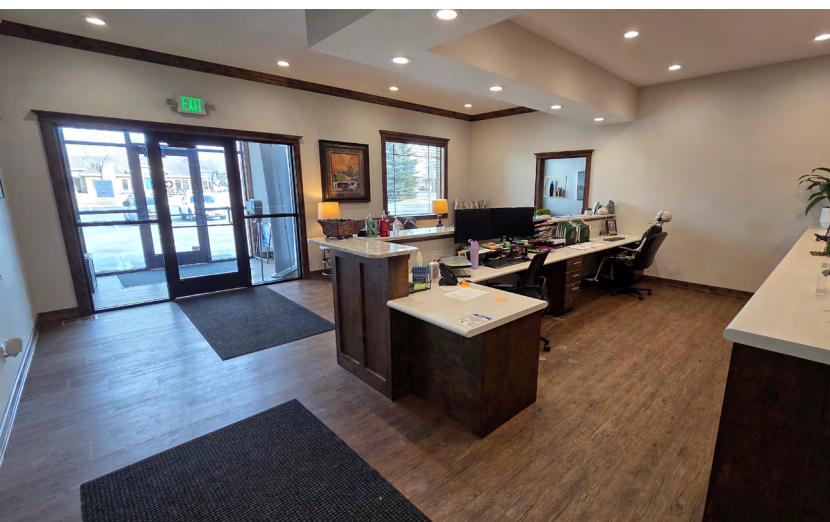
NEWMARK



MOUNTAIN WEST

DUSTIN MORTIMER
 dmortimer@newmarkmw.com
 direct 208.874.0230
[View Profile](#)

**FULL SERVICE
 COMMERCIAL REAL ESTATE**
 482 Constitution Way, Suite 211
 Idaho Falls, ID 83402
 Office 208.874.0230
www.newmarkmw.com

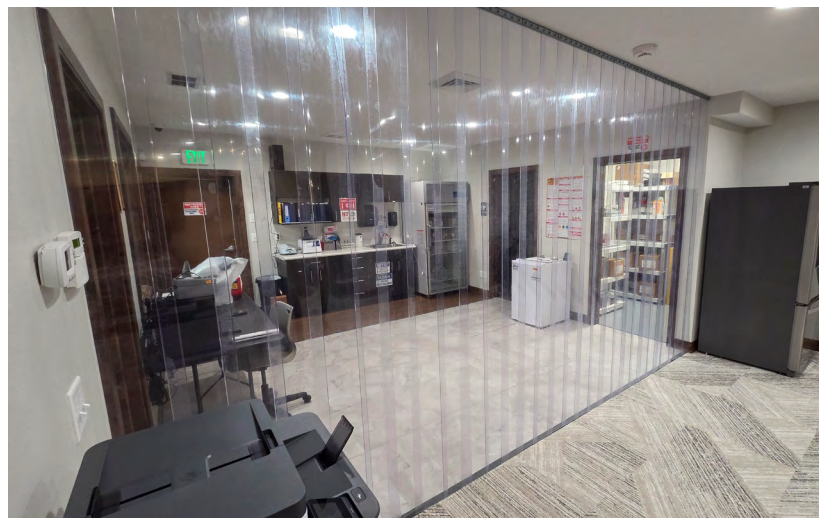


NEWMARK

 **MOUNTAIN WEST**

DUSTIN MORTIMER
dmortimer@newmarkmw.com
direct 208.874.0230
[View Profile](#)

**FULL SERVICE
COMMERCIAL REAL ESTATE**
482 Constitution Way, Suite 211
Idaho Falls, ID 83402
Office 208.874.0230
www.newmarkmw.com



NEWMARK

 MOUNTAIN WEST

DUSTIN MORTIMER
dmortimer@newmarkmw.com
direct 208.874.0230
[View Profile](#)

**FULL SERVICE
COMMERCIAL REAL ESTATE**
482 Constitution Way, Suite 211
Idaho Falls, ID 83402
Office 208.874.0230
www.newmarkmw.com



NEWMARK

MOUNTAIN WEST

DUSTIN MORTIMER
dmortimer@newmarkmw.com
direct 208.874.0230
[View Profile](#)

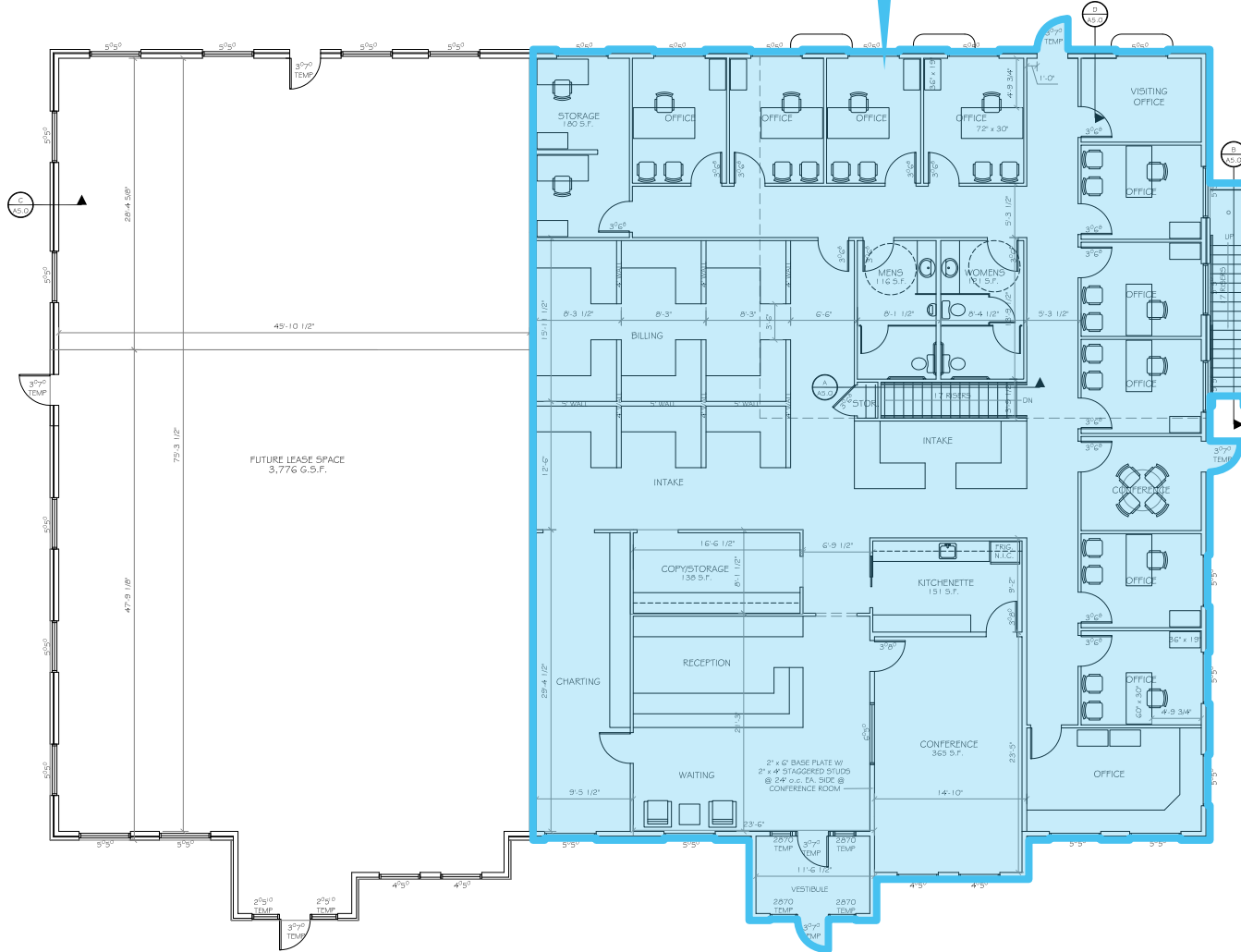


**FULL SERVICE
COMMERCIAL REAL ESTATE**
482 Constitution Way, Suite 211
Idaho Falls, ID 83402
Office 208.874.0230
www.newmarkmw.com

MAIN FLOOR PLAN

1680 ELK CREEK DR

5,227 SF MAIN FLOOR AVAILABLE



NEWMARK

MOUNTAIN WEST

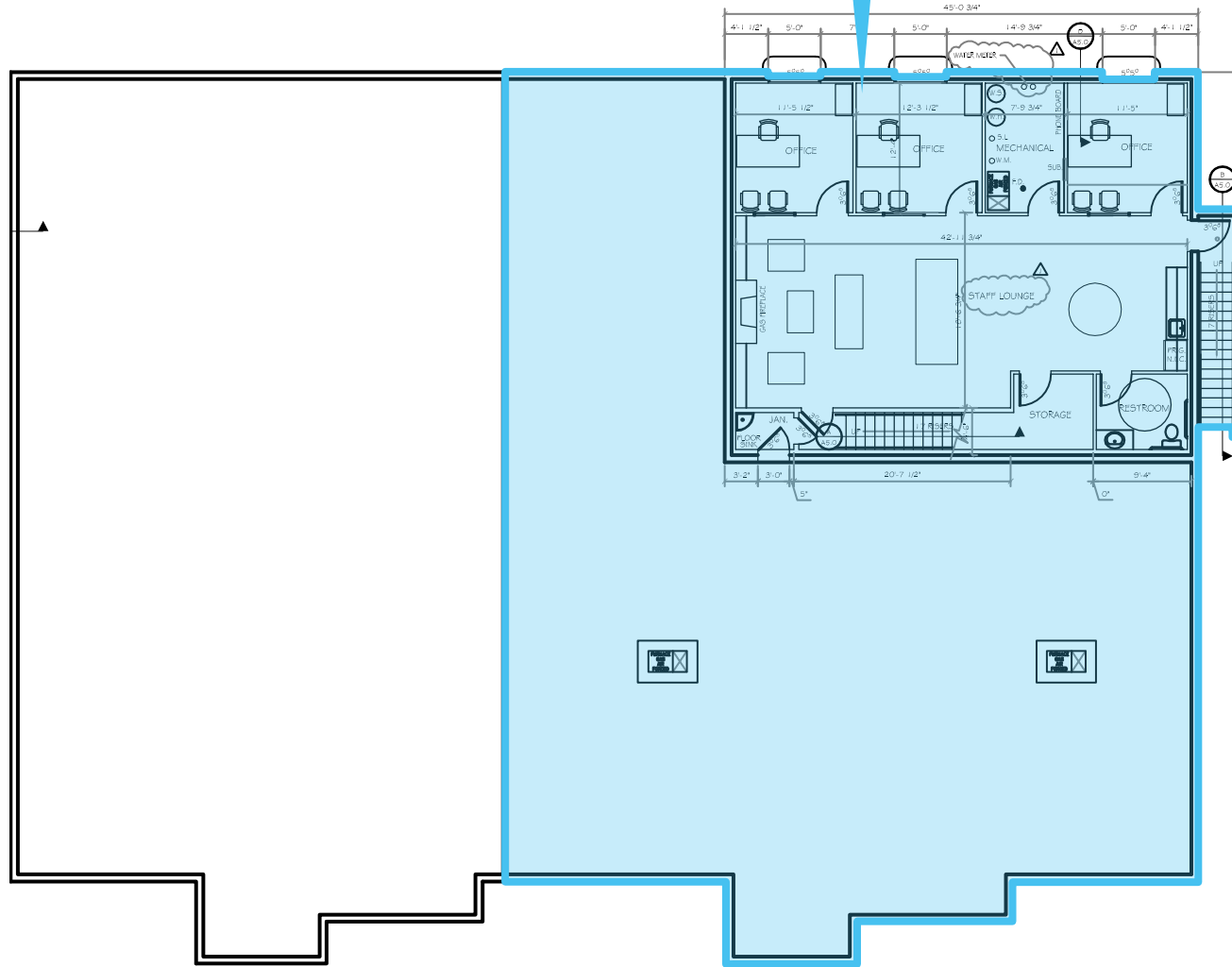
DUSTIN MORTIMER
dmortimer@newmarkmw.com
direct 208.874.0230
[View Profile](#)

**FULL SERVICE
COMMERCIAL REAL ESTATE**
482 Constitution Way, Suite 211
Idaho Falls, ID 83402
Office 208.874.0230
www.newmarkmw.com

1680 ELK CREEK DR

BASEMENT FLOOR PLAN

1,551 SF BASEMENT AVAILABLE

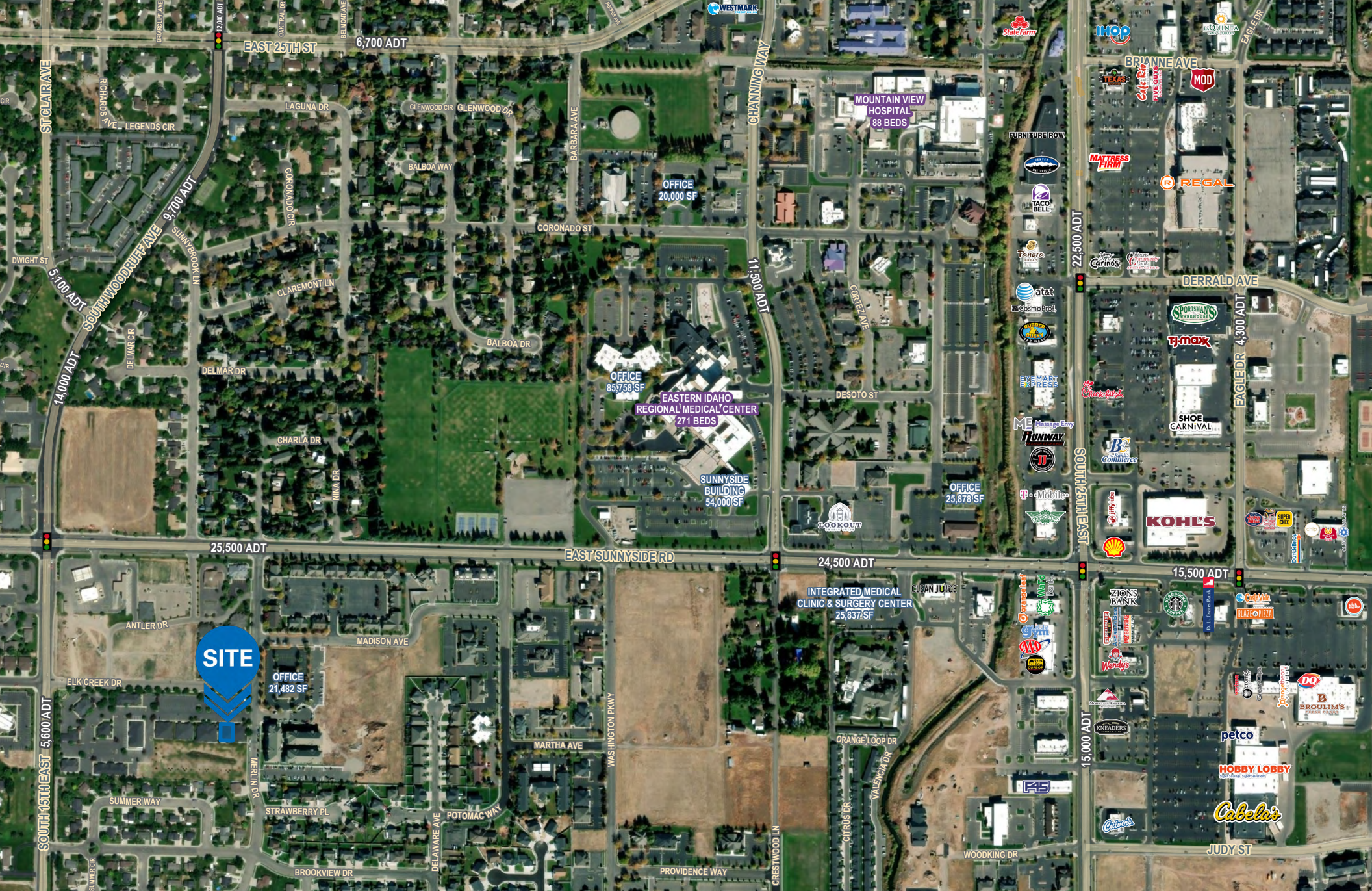


NEWMARK

MOUNTAIN WEST

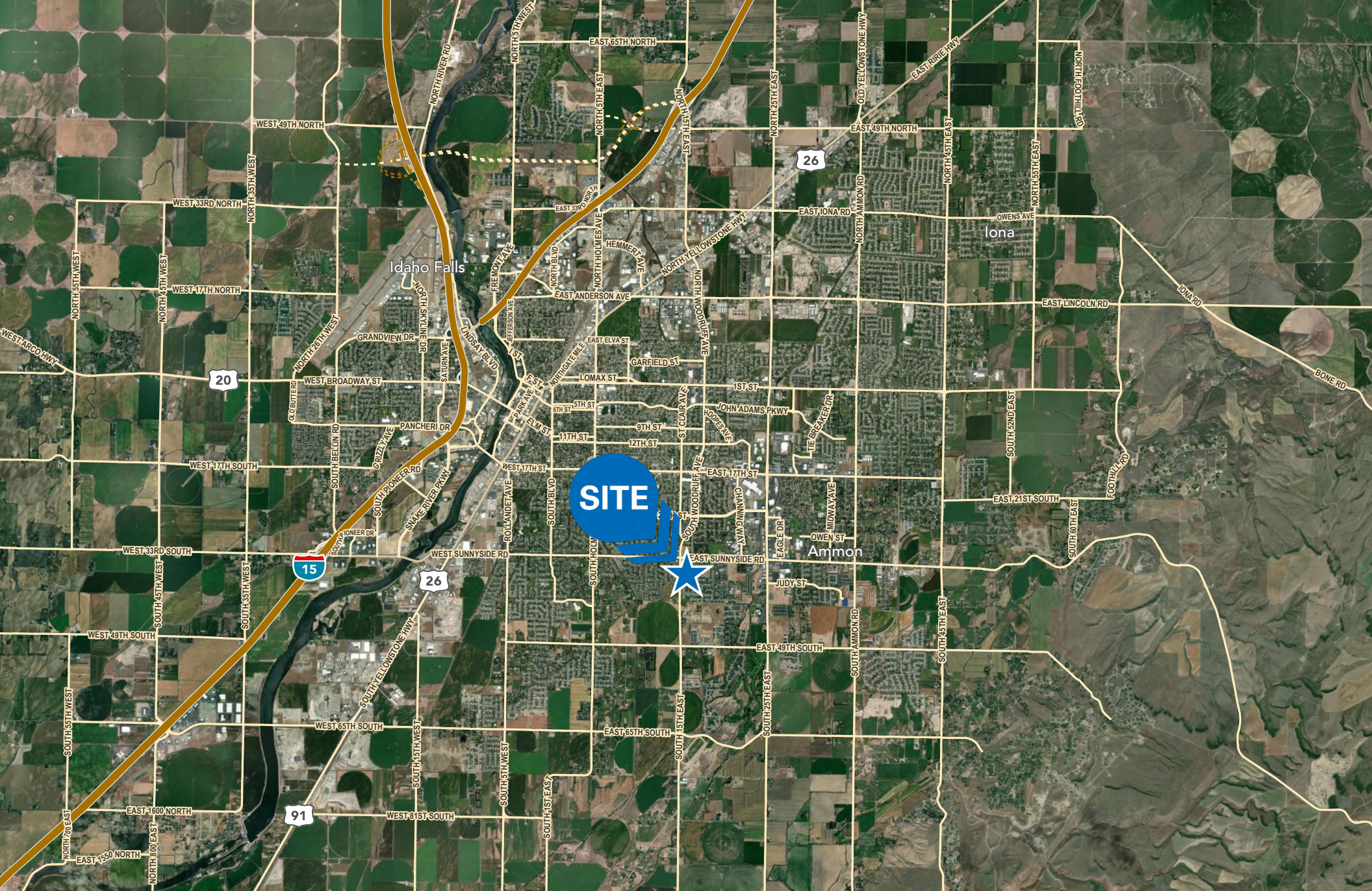
DUSTIN MORTIMER
dmortimer@newmarkmw.com
direct 208.874.0230
[View Profile](#)

**FULL SERVICE
COMMERCIAL REAL ESTATE**
482 Constitution Way, Suite 211
Idaho Falls, ID 83402
Office 208.874.0230
www.newmarkmw.com



DUSTIN MORTIMER
 dmortimer@newmarkmw.com
 direct 208.874.0230
[View Profile](#)

**FULL SERVICE
 COMMERCIAL REAL ESTATE**
 482 Constitution Way, Suite 211
 Idaho Falls, ID 83402
 Office 208.874.0230
www.newmarkmw.com



NEWMARK

MOUNTAIN WEST

DUSTIN MORTIMER
dmortimer@newmarkmw.com
direct 208.874.0230
[View Profile](#)

**FULL SERVICE
COMMERCIAL REAL ESTATE**
482 Constitution Way, Suite 211
Idaho Falls, ID 83402
Office 208.874.0230
www.newmarkmw.com