

FOR LEASE: MULTI-TENANT OFFICE BUILDING IN OTAY MESA, CA

PACIFIC RIM POINTE

9335 Airway Road, San Diego (Otay Mesa) CA 92154



- Outstanding Corner Location at Airway Road and Heimlich Hertz Drive
- High Visibility Office Building
- Office Suites Starting at 500sf and up
- Deli on the first floor
- Excellent Street Frontage near the I-905 and 125 entrance/exit



IRE DEVELOPMENT
a division of IRE Enterprises, Inc

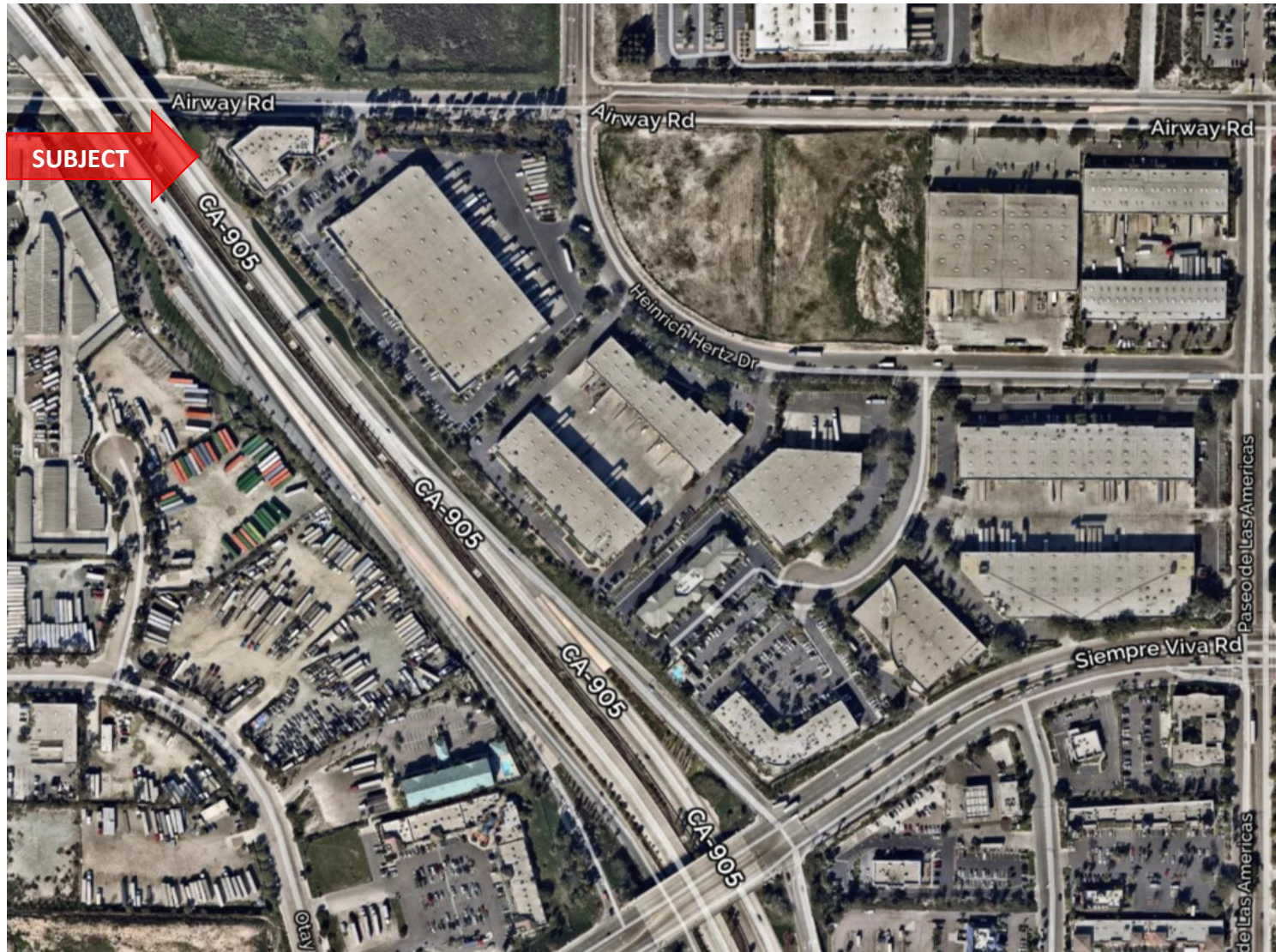
CONTACT:

Perla Gutierrez
Direct Number: (619) 591-2410
Cellular: (619) 520-2263
perla@iredevelopment.com

FOR LEASE: MULTI-TENANT OFFICE BUILDING IN OTAY MESA, CA

PACIFIC RIM POINTE

9335 Airway Road, San Diego (Otay Mesa) CA 92154



SUBJECT



IRE DEVELOPMENT
a division of IRE Enterprises, Inc

CONTACT:

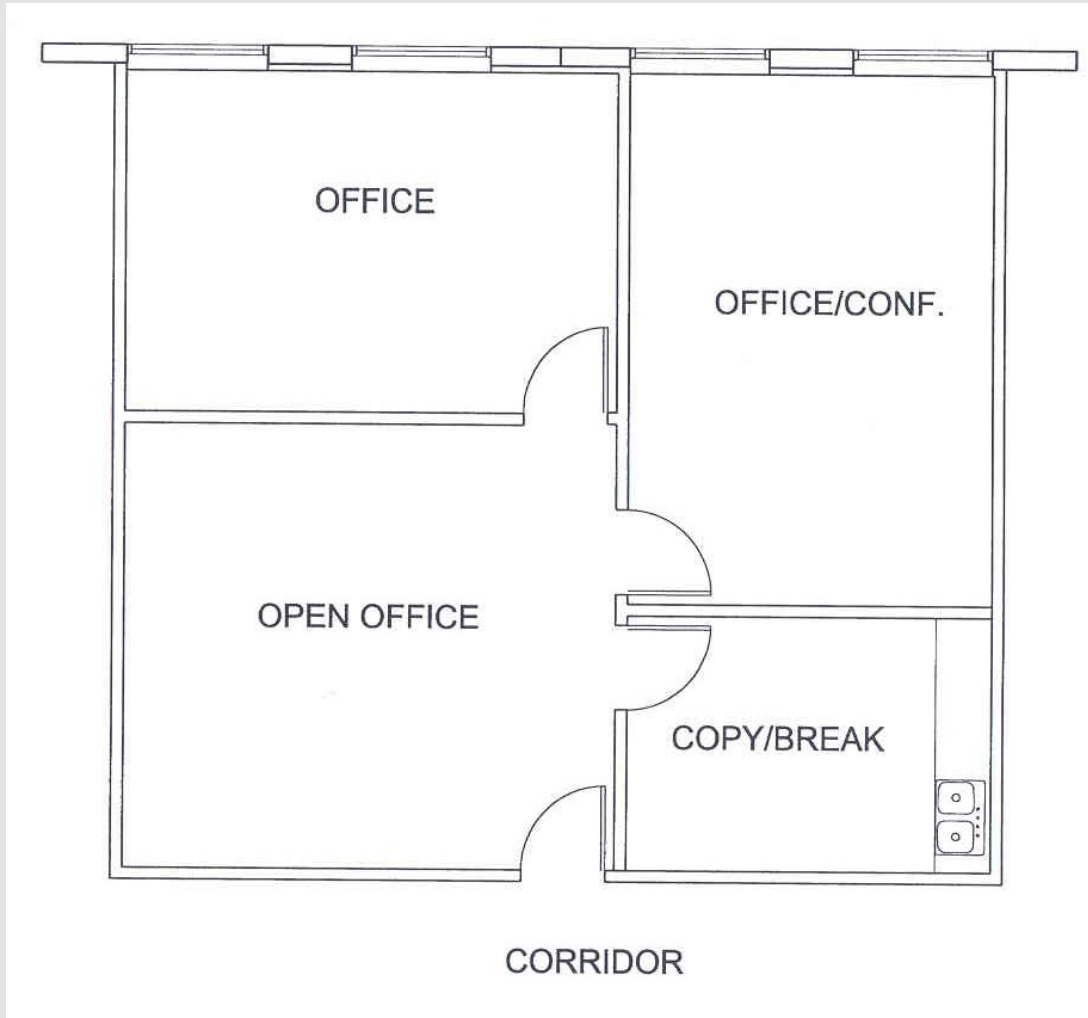
Perla Gutierrez
Direct Number: (619) 591-2410
Cellular: (619) 520-2263
perla@iredevelopment.com

All information furnished regarding property for sale, lease or financing is from sources we deem in our sole opinion to be reliable. No representation is made as to the accuracy thereof and is submitted subject to omissions, errors, change of leasing price, or other conditions prior to sale, lease or financing, or withdraw without notice.

FOR LEASE: MULTI-TENANT OFFICE BUILDING IN OTAY MESA, CA

PACIFIC RIM POINTE

9335 Airway Road, San Diego (Otay Mesa) CA 92154



Available Suite 108

1,191 Square Feet



IRE DEVELOPMENT
a division of IRE Enterprises, Inc

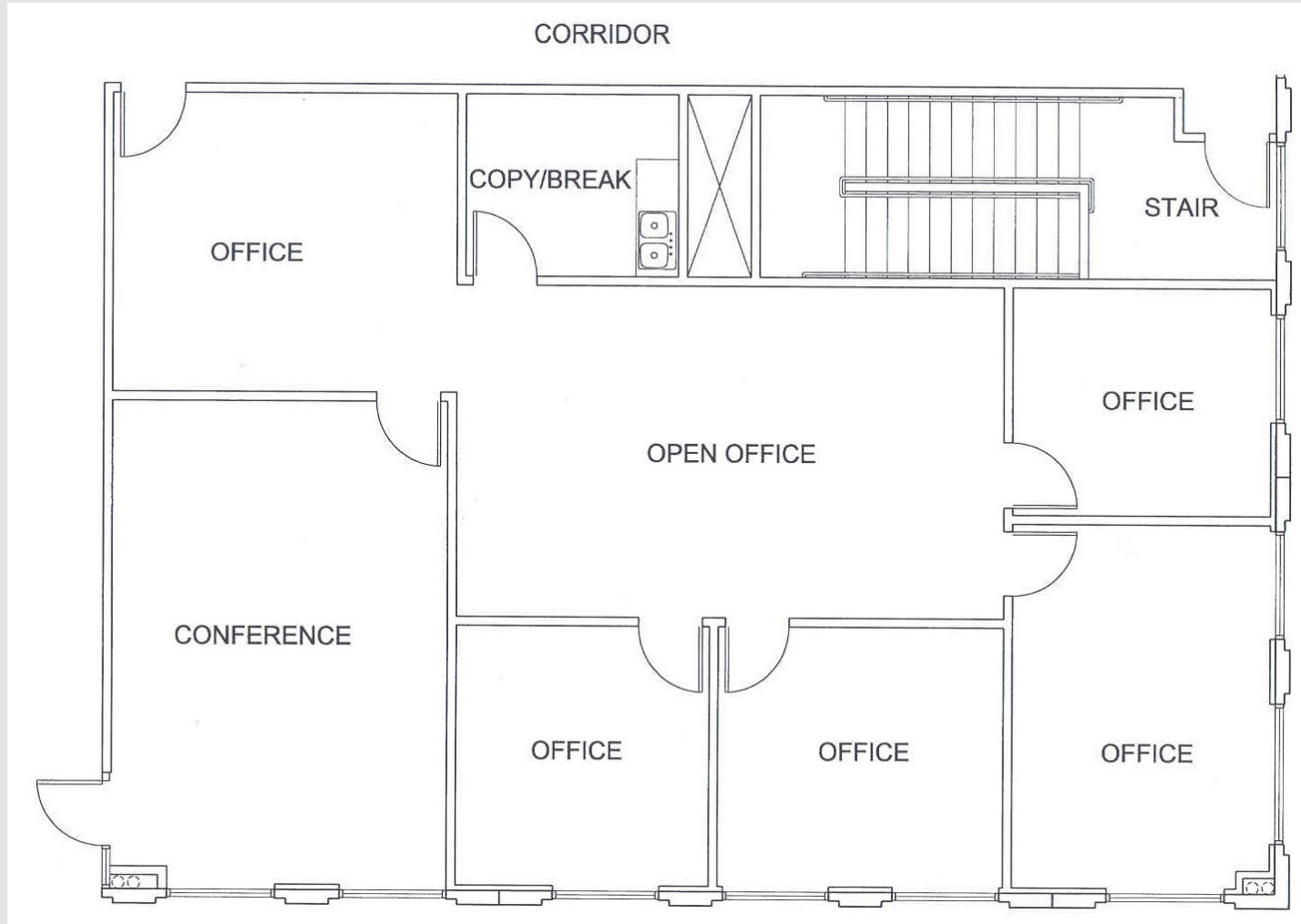
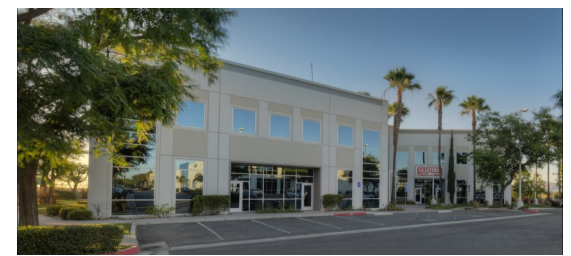
CONTACT:

Perla Gutierrez
Direct Number: (619) 591-2410
Ceullar: (619) 520-2263
perla@iredevelopment.com

FOR LEASE: MULTI-TENANT OFFICE BUILDING IN OTAY MESA, CA

PACIFIC RIM POINTE

9335 Airway Road, San Diego (Otay Mesa) CA 92154



Available Suite 203
2,371 Square Feet



IRE DEVELOPMENT
a division of IRE Enterprises, Inc

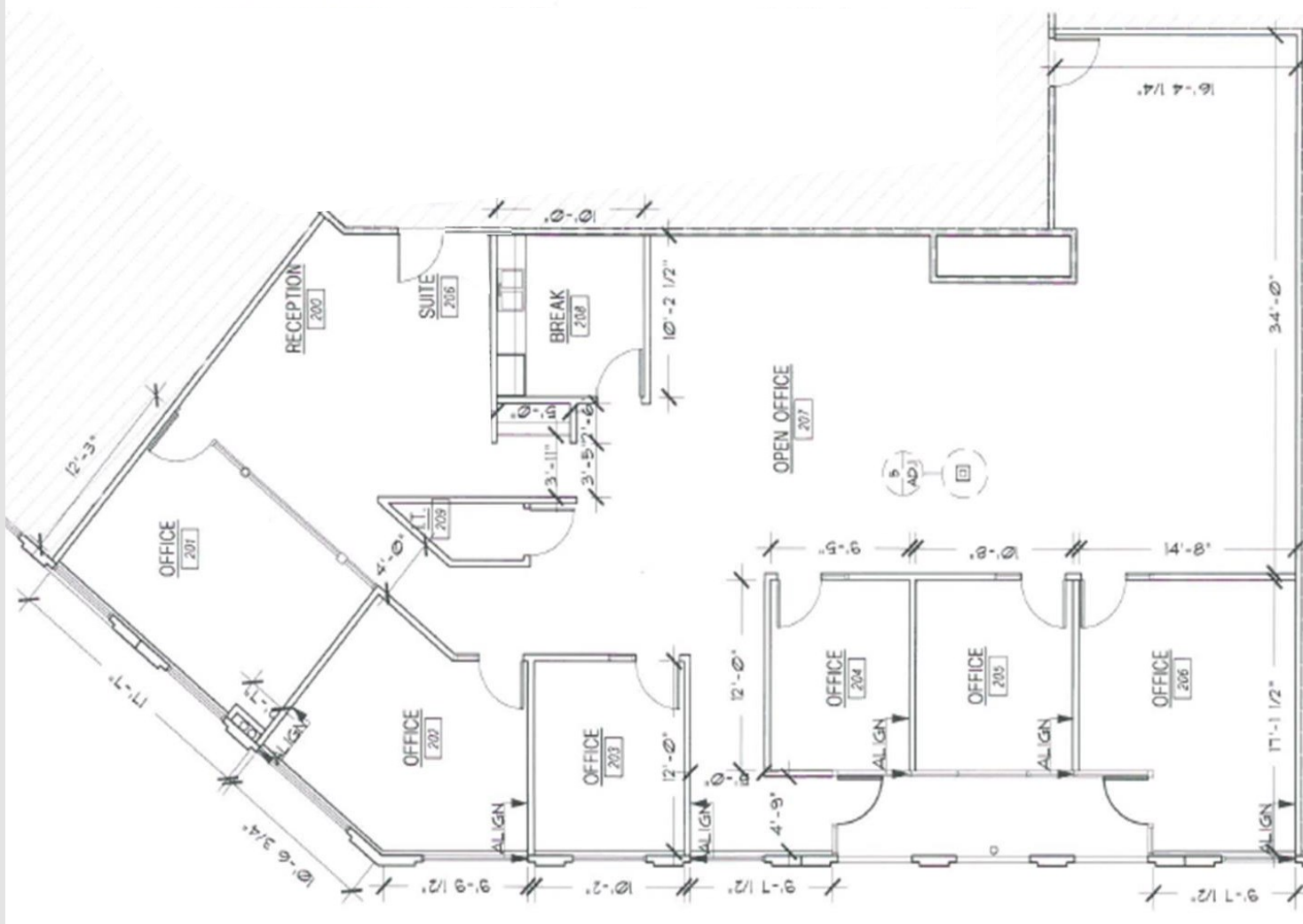
CONTACT:
Perla Gutierrez
Direct Number: (619) 591-2410
Ceullar: (619) 520-2263
perla@ireddevelopment.com

All information furnished regarding property for sale, lease or financing is from sources we deem in our sole opinion to be reliable. No representation is made as to the accuracy thereof and is submitted subject to omissions, errors, change of leasing price, or other conditions prior to sale, lease or financing, or withdraw without notice.

FOR LEASE: MULTI-TENANT OFFICE BUILDING IN OTAY MESA, CA

PACIFIC RIM POINTE

9335 Airway Road, San Diego (Otay Mesa) CA 92154



Available Suite 206
4,084 Square Feet



IRE DEVELOPMENT
a division of IRE Enterprises, Inc

CONTACT:
Perla Gutierrez
Direct Number: (619) 591-2410
Ceullar: (619) 520-2263
perla@iredevelopment.com

All information furnished regarding property for sale, lease or financing is from sources we deem in our sole opinion to be reliable. No representation is made as to the accuracy thereof and is submitted subject to omissions, errors, change of leasing price, or other conditions prior to sale, lease or financing, or withdraw without notice.