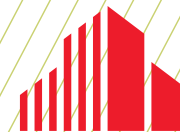


FOR LEASE

UP TO 27,715 SF AVAILABLE



**CUSHMAN &
WAKEFIELD**



SILVER LAKE PLAZA

4001 STINSON BLVD., ST. ANTHONY, MN 55421

SILVER LAKE PLAZA - 4001 Stinson Blvd. | St. Anthony, MN 55421

PROPERTY HIGHLIGHTS

- *Large space at low cost, so staff can spread out.*
- *Continuous glass line, with operable windows in every office for fresh air.*
- *Private office build-out if requested.*
- Class B office/medical space.
- Ample parking for tenants and guests
- Building upgrades taking place now
- On bus line (Stinson Blvd.)
- Convenient location - surrounded by major highways: I-94, I-694, I-35W & Hwy. 36

BUILDING SIZE	58,448 SF
---------------	-----------

YEAR BUILT/RENOVATED	1966 / 2005 / 2015
----------------------	--------------------

# OF FLOORS	Four (4)
-------------	----------

AVAILABLE SQ. FT.	588 - 27,715 SF
-------------------	-----------------

LEASE RATE	\$8.00 - \$10.00 per SF
------------	-------------------------

2025 ESTIMATED TAX & OPER. EXP.	\$12.58 per SF
------------------------------------	----------------

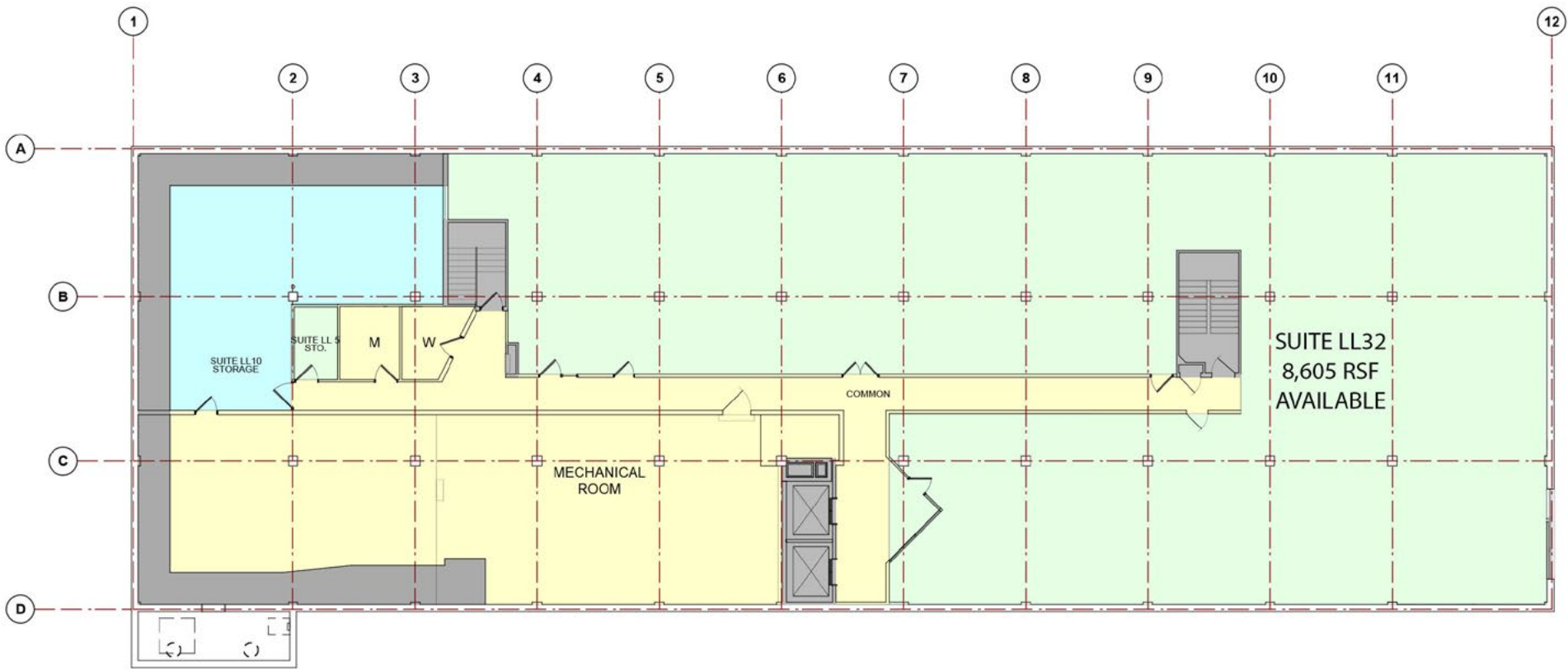




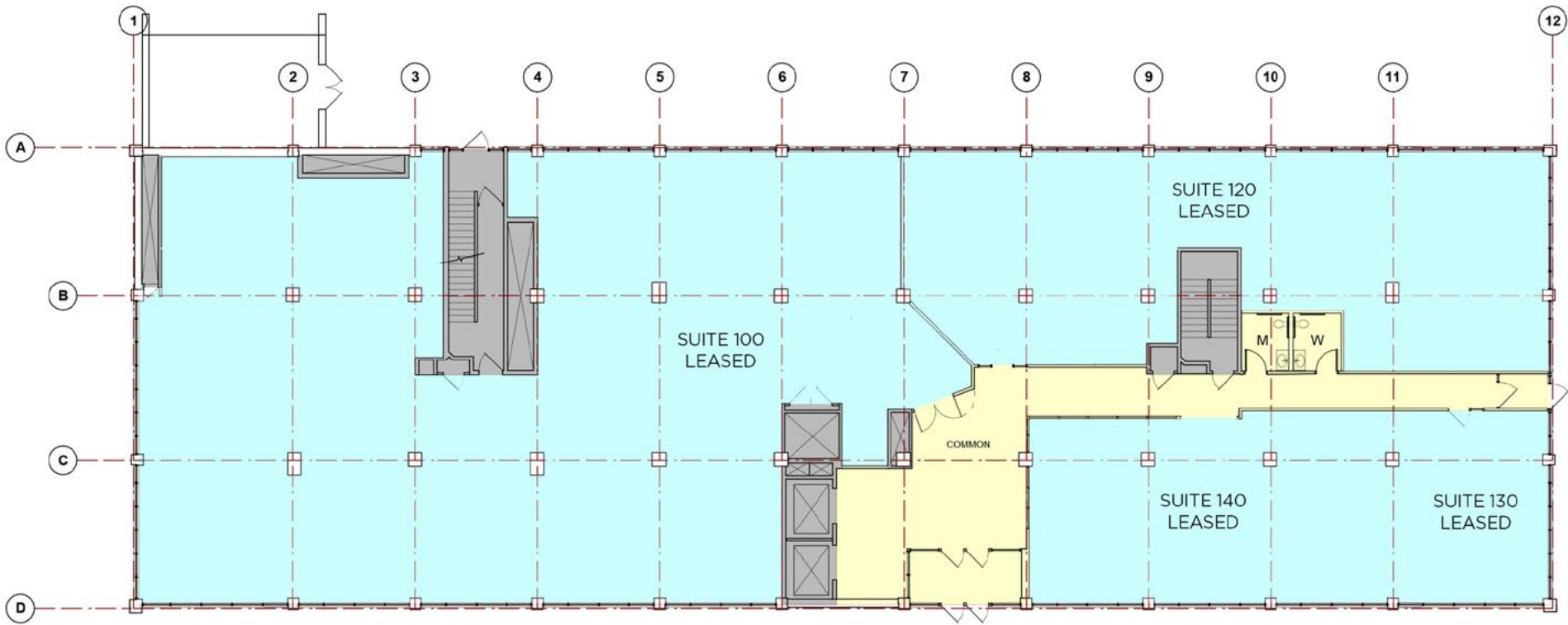
Click on arrow for a virtual tour of the 2nd Floor.



BASEMENT LEVEL

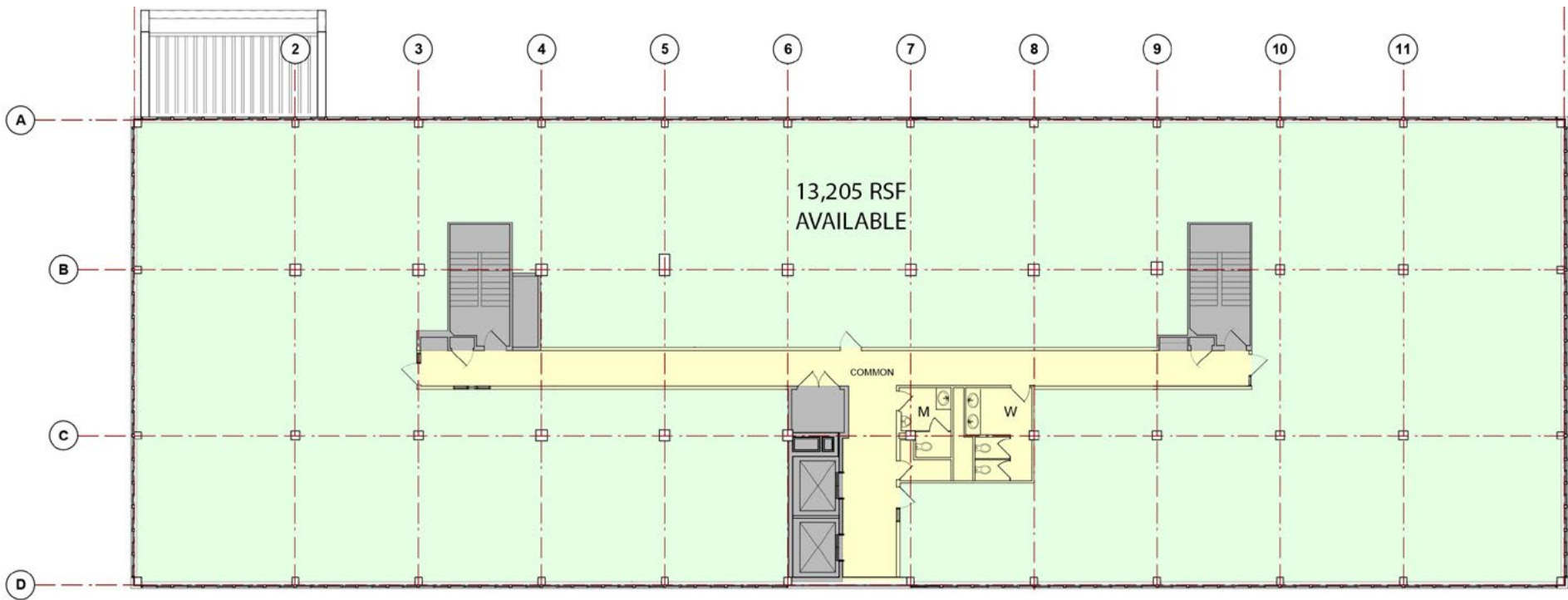


FIRST FLOOR



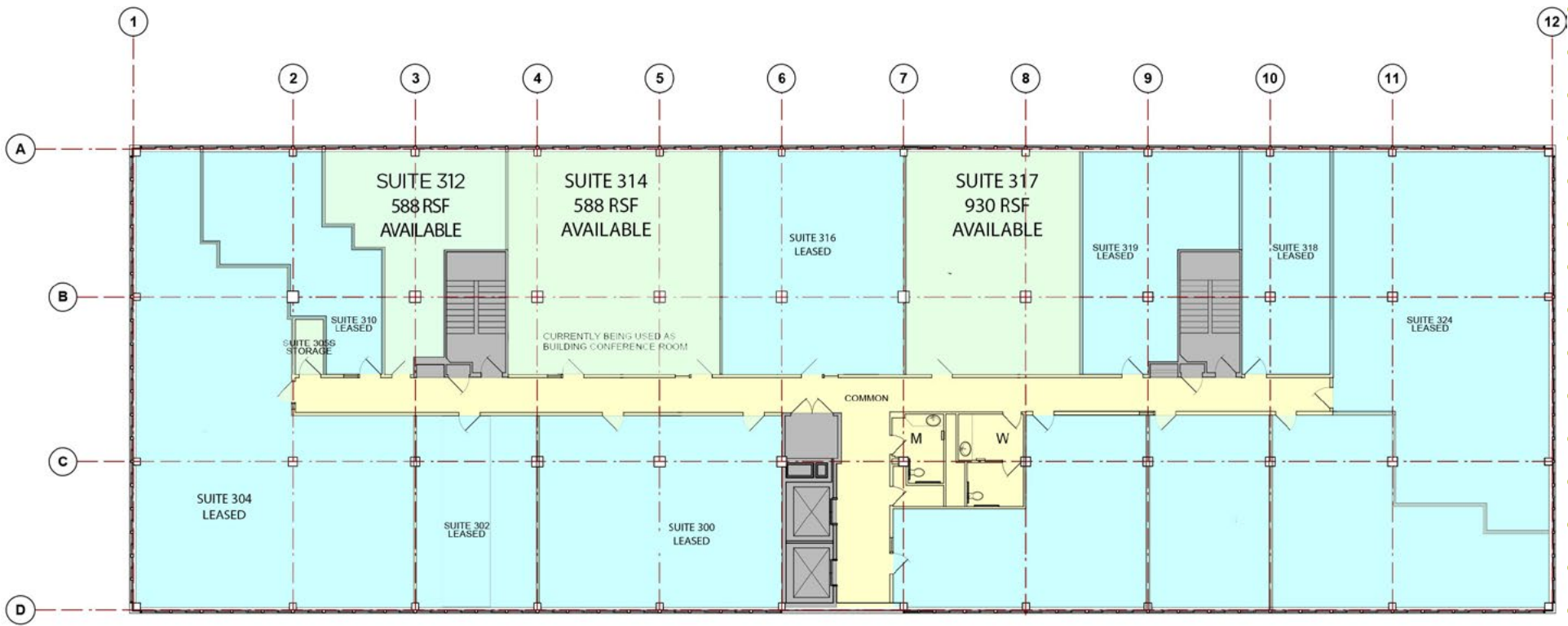
FLOOR
PLAN

SECOND FLOOR

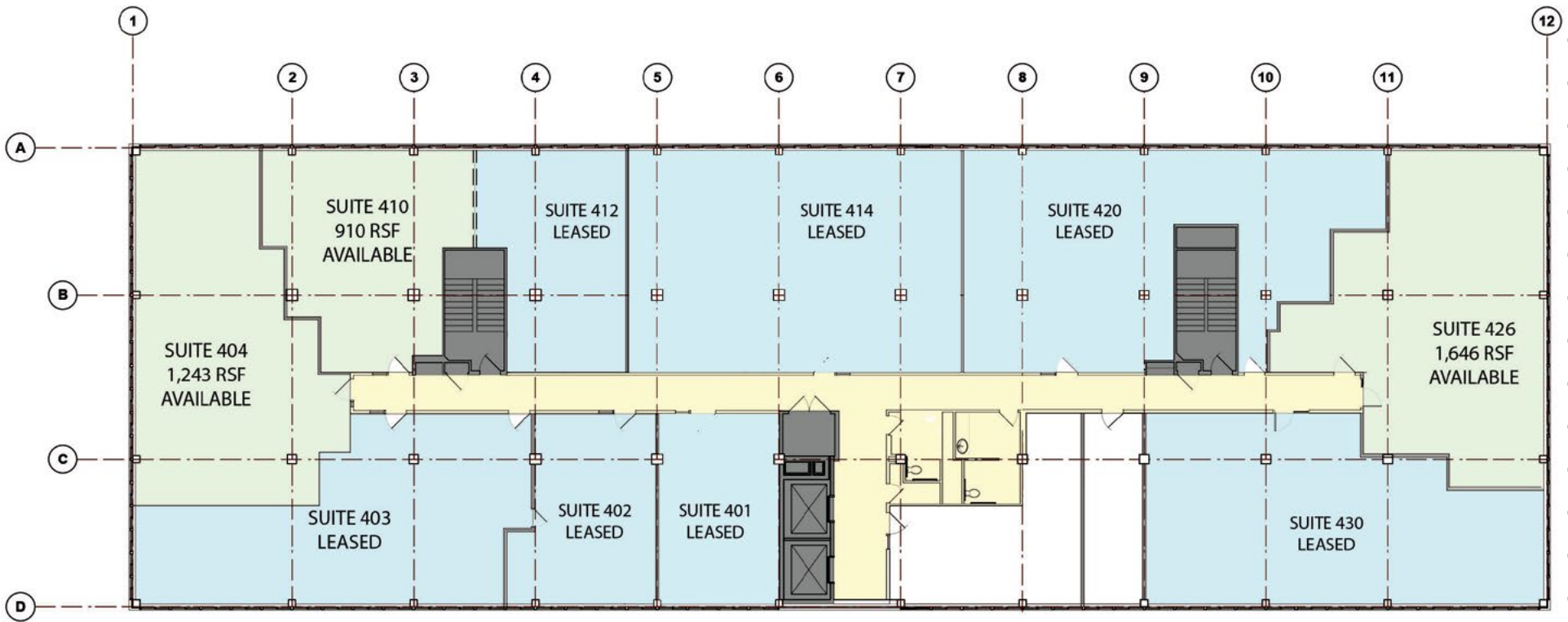


FLOOR
PLAN

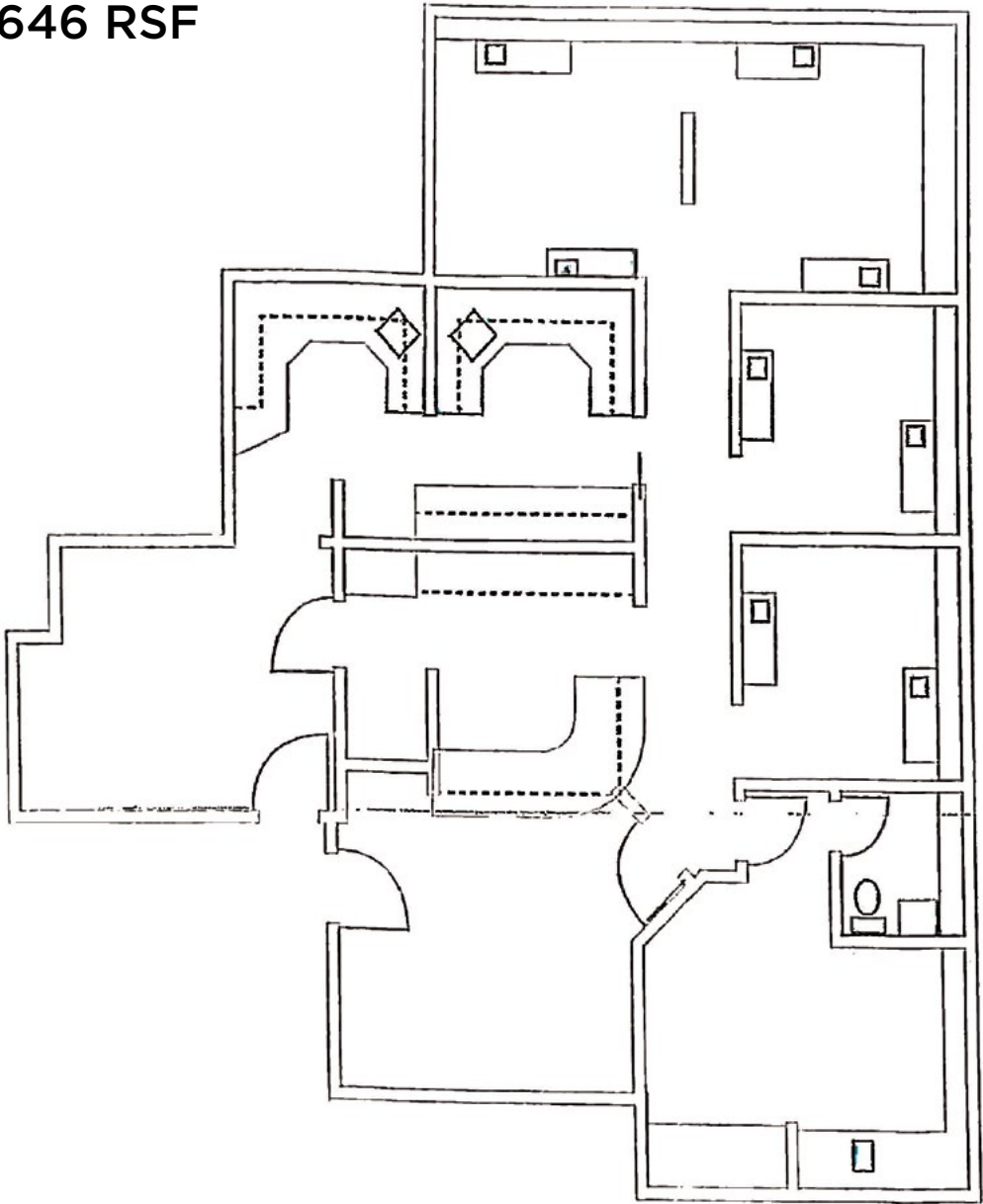
THIRD FLOOR



FOURTH FLOOR



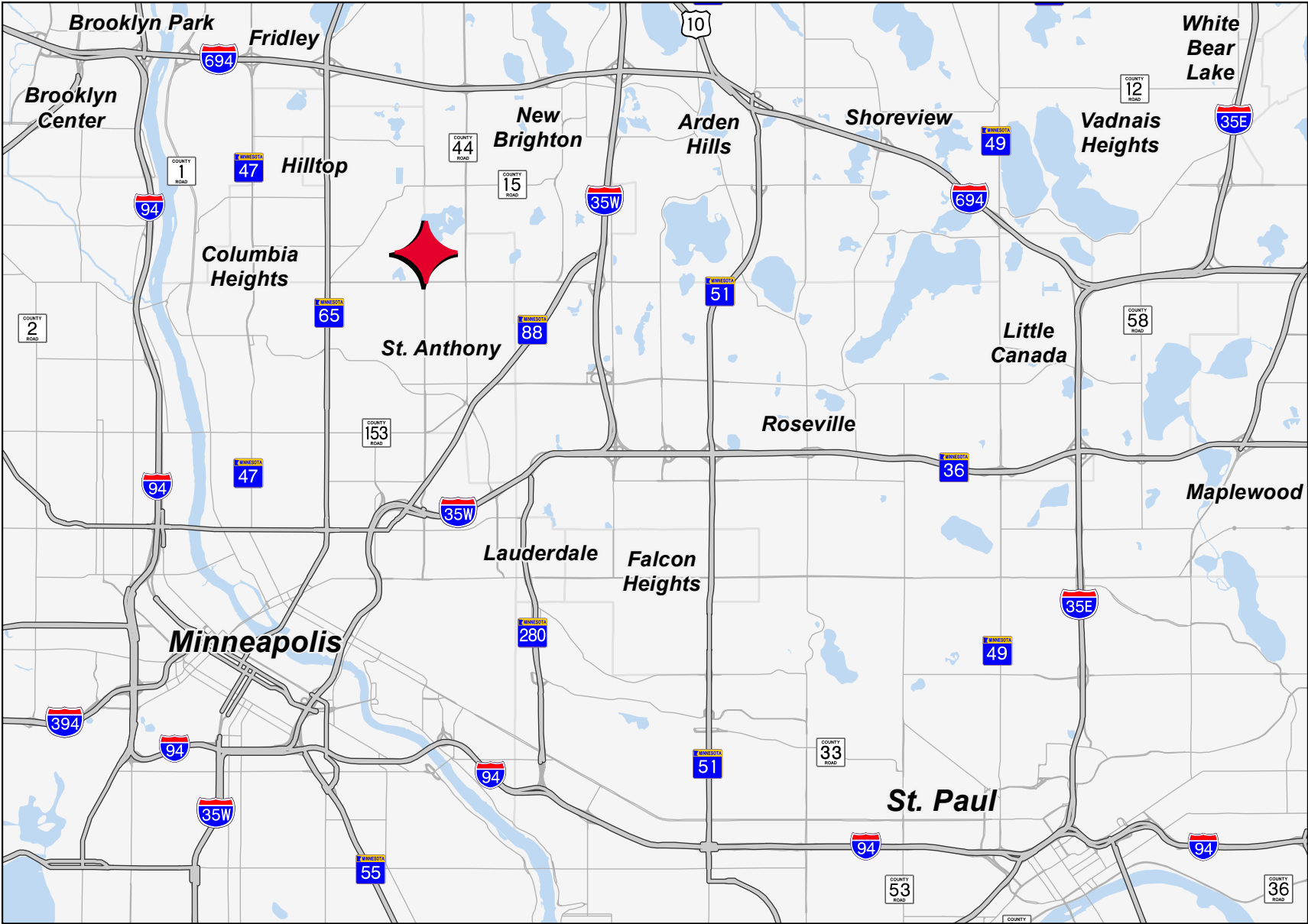
SUITE 426 - 1,646 RSF



FLOOR
PLAN



AERIAL
MAP



LOCATION
MAP

CONTACT INFORMATION

ANN STAHLEY

Director
ann.stahley@cushwake.com
+1 651 248 6946

3500 American Blvd W | Suite 200
Minneapolis, MN 55431
cushmanwakefield.com



©2025 Cushman & Wakefield. All rights reserved. The information contained in this communication is strictly confidential. This information has been obtained from sources believed to be reliable but has not been verified. NO WARRANTY OR REPRESENTATION, EXPRESS OR IMPLIED, IS MADE AS TO THE CONDITION OF THE PROPERTY (OR PROPERTIES) REFERENCED HEREIN OR AS TO THE ACCURACY OR COMPLETENESS OF THE INFORMATION CONTAINED HEREIN, AND SAME IS SUBMITTED SUBJECT TO ERRORS, OMISSIONS, CHANGE OF PRICE, RENTAL OR OTHER CONDITIONS, WITHDRAWAL WITHOUT NOTICE, AND TO ANY SPECIAL LISTING CONDITIONS IMPOSED BY THE PROPERTY OWNER(S). ANY PROJECTIONS, OPINIONS OR ESTIMATES ARE SUBJECT TO UNCERTAINTY AND DO NOT SIGNIFY CURRENT OR FUTURE PROPERTY PERFORMANCE.