

# KOREATOWN

Retail and Restaurant  
Spaces For Lease

*california marketplace*

**Grocery-Anchored Center**  
at 450 Western Ave



CBRE



# Property Highlights

## Unleash your vision at 450 Western Ave.

where Koreatown's energy pulses through a thriving three-level retail hub. Imagine your brand alongside the beloved California Marketplace, drawing crowds into a vibrant tapestry of experiences. This isn't just space; it's an invitation. Picture your restaurant sizzling with life or your store captivating the community. Benefit from a dynamic location, ample parking, and the spirit of Koreatown – a canvas for your retail dream to flourish. Step into success!



**Spaces to Shape:** Adaptable spaces, from ready-to-go restaurant setups to blank canvases for your custom build

**Built-In Buzz:** Leverage the high-traffic draw of California Marketplace, a community hub driving consistent footfall

**Sky's the Limit:** (3rd Floor Tenants!) Exclusive rooftop terrace for dining, events, & unforgettable brand activations with Koreatown skyline views

**Synergy & Success:** Join a curated mix of thriving businesses, fostering a collaborative customer experience

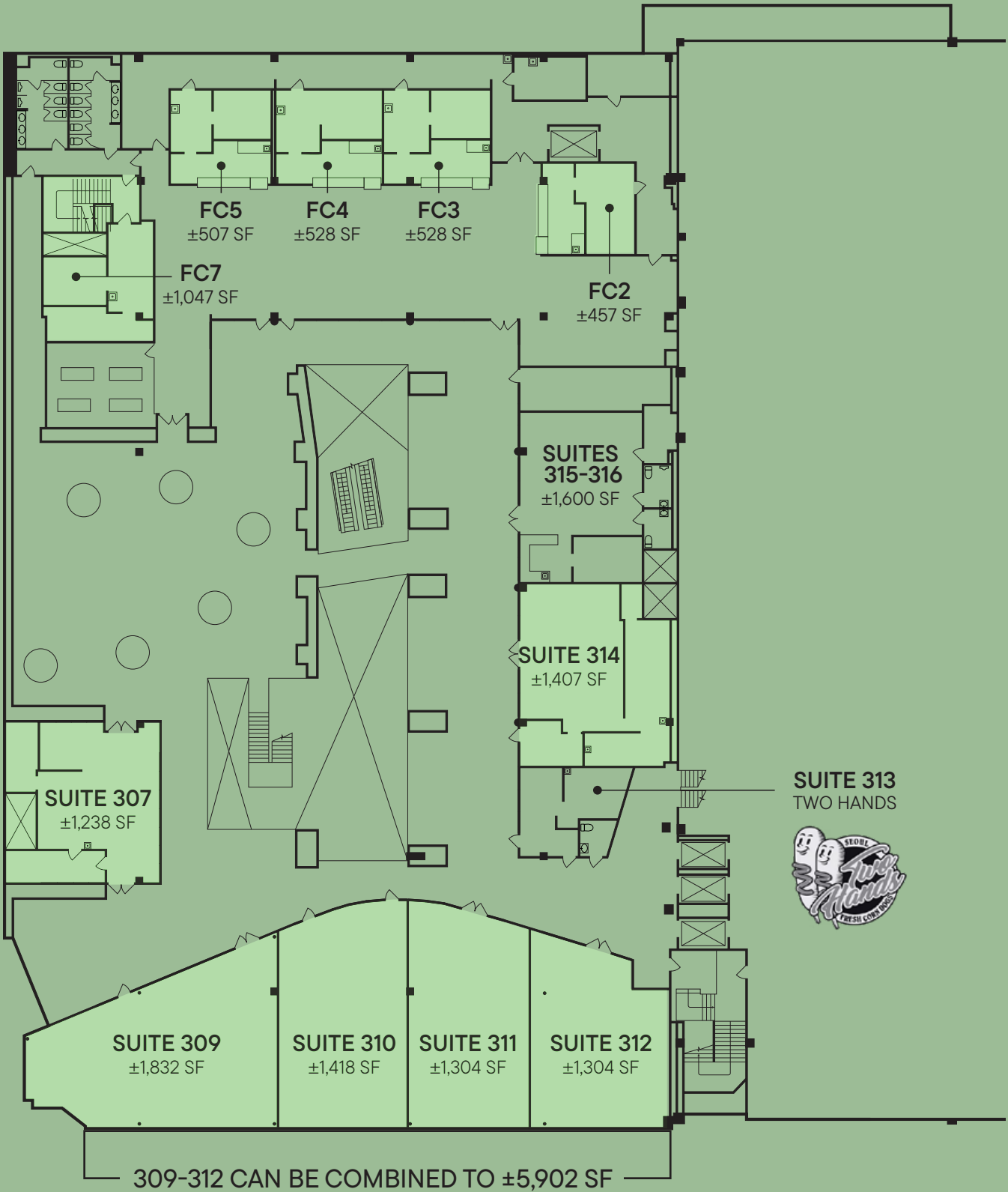
**Effortless Access:** Abundant multi-level parking delivers stress-free convenience, drawing customers right to your door

3RD FLOOR

Suite	SF	Retail Use
FC2	±457 SF	2nd Generation Restaurant
FC3	±528 SF	2nd Generation Restaurant
FC4	±528 SF	2nd Generation Restaurant
FC5	±507 SF	2nd Generation Restaurant
FC7	±1,047 SF	2nd Generation Restaurant
307	±1,238 SF	2nd Generation Restaurant
309-312	±5,902 SF	Raw space: ideal for fitness, brand experiences, karaoke
314	±1,407 SF	2nd Generation Restaurant
315-316	±1,600 SF	Available; 2nd Generation Restaurant



Floor Plan







FC7 : ±1,047 SF



FC2 : ±457 SF



FC3 : ±528 SF



FC4 : ±528 SF



FC5 : ±507 SF



307 : ±1,238 SF



314 : ±1,407 SF



Beyond the bustling retail spaces and vibrant atmosphere,

## a **stunning third-floor rooftop** awaits,

offering unparalleled appeal. Envision your business thriving with this distinct feature – a coveted space for events, dining, or simply captivating patrons. This rooftop elevates your brand, providing a sophisticated haven with breathtaking views, solidifying 450 S Western Ave as the ultimate destination.





# Suite 210,

on the second floor, presents a blank canvas for your vision. This raw space offers unparalleled flexibility, allowing you to design a retail experience perfectly tailored to your brand.



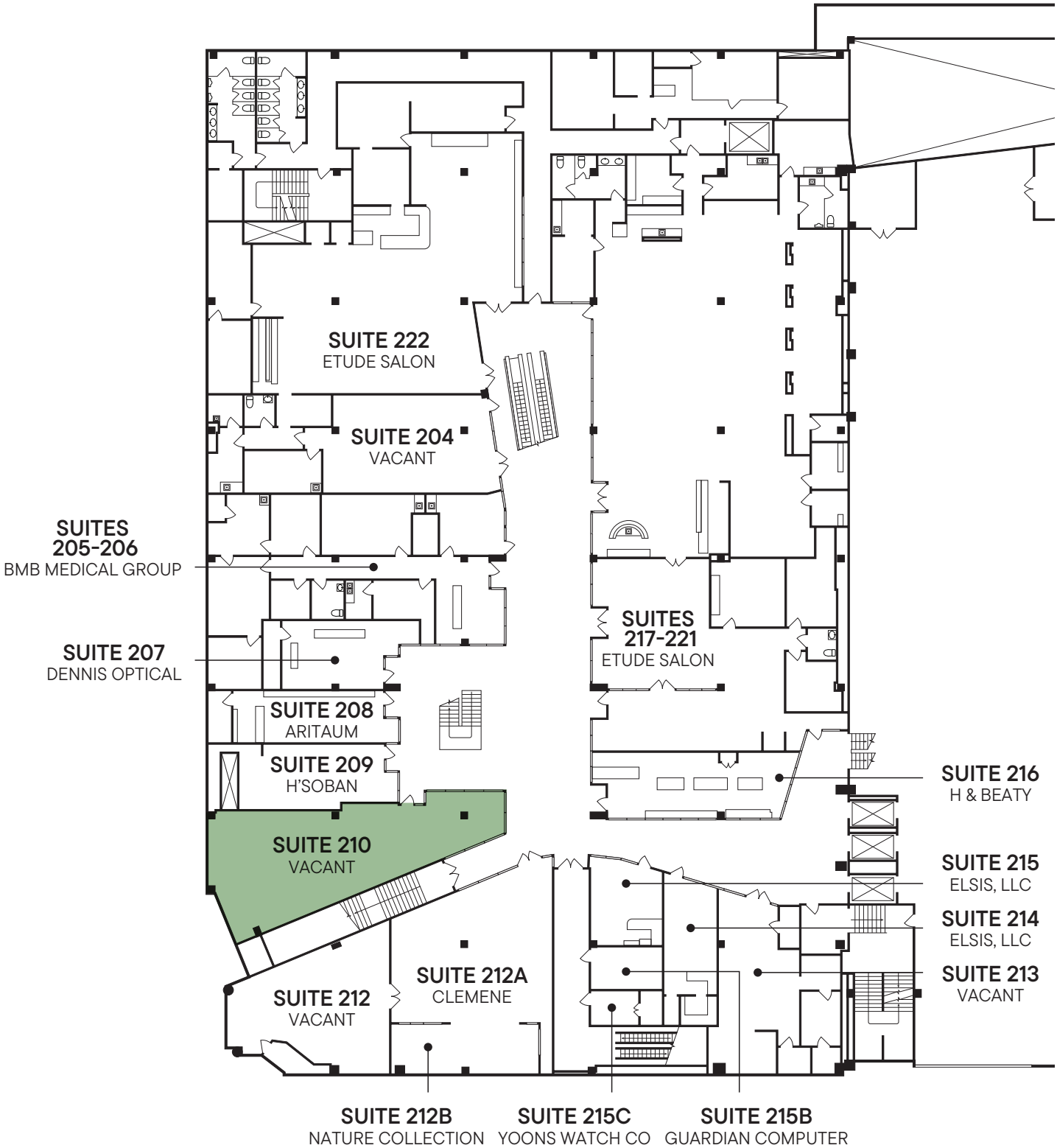


# Own Your Koreatown Story



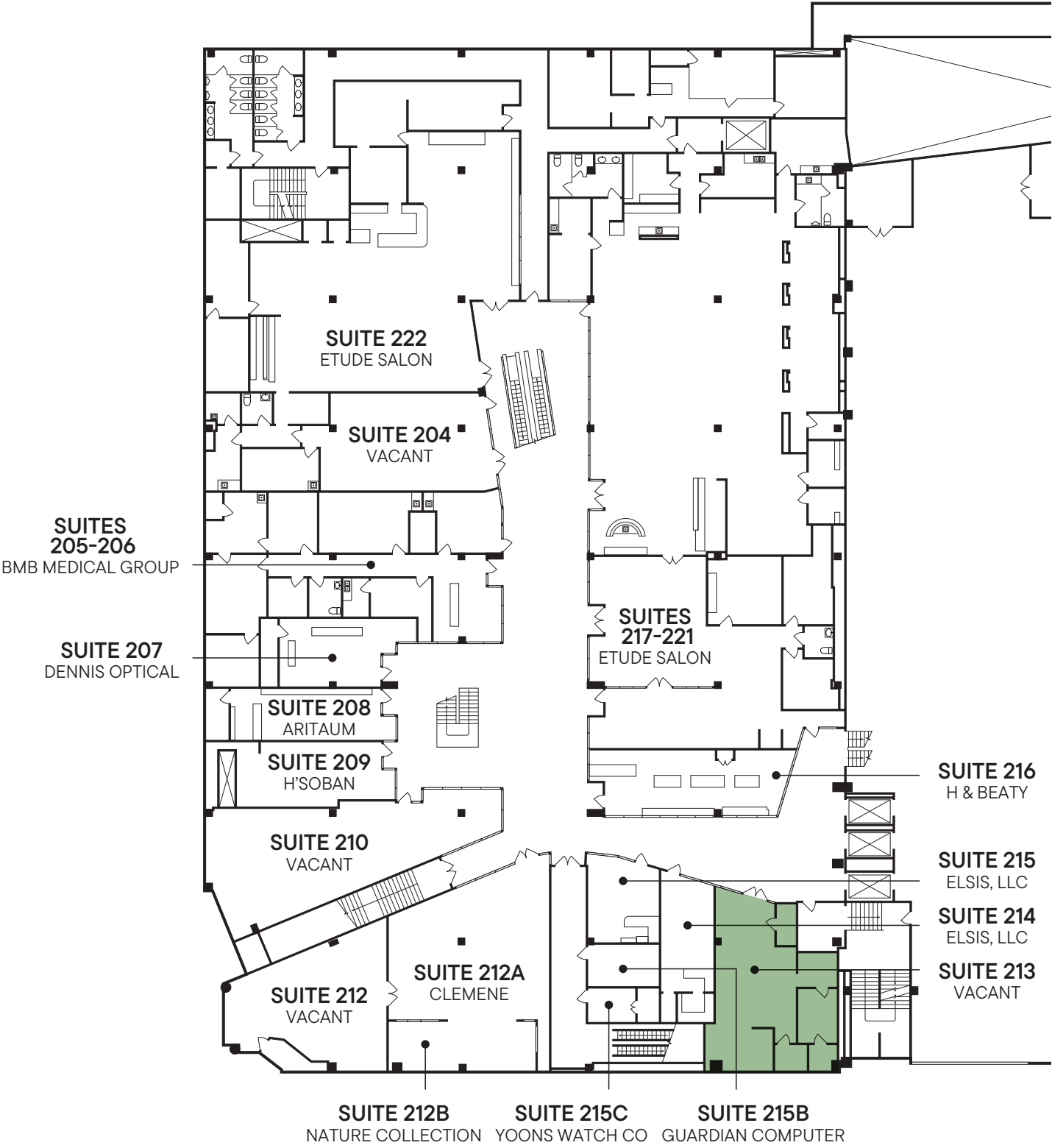
## 2ND FLOOR

Suite	SF	Retail Use
210	±1,496 SF	Open raw space



2ND FLOOR

Suite	SF	Retail Use
213	±1,139 SF	Former bank space





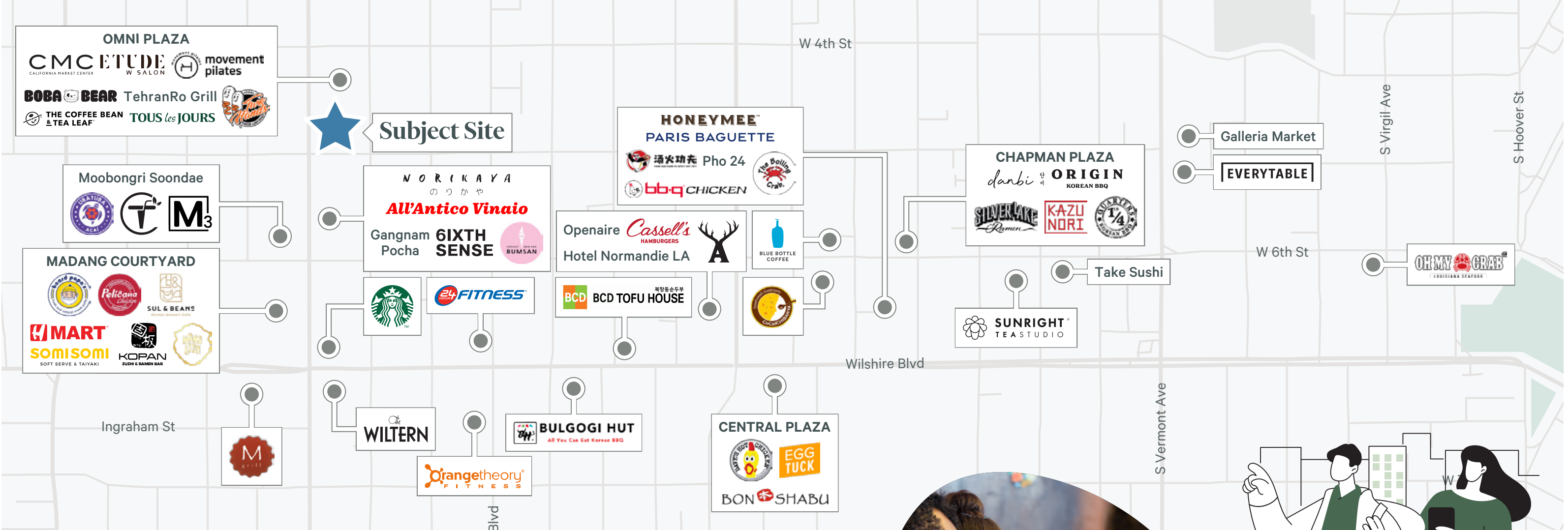


# Step into the heart of **Koreatown,**

a vibrant tapestry woven within the energetic fabric of Los Angeles. This dynamic neighborhood is a cultural melting pot, brimming with life and creativity. From authentic Korean flavors to a kaleidoscope of global cuisines, Koreatown tantalizes the senses. A bustling commercial hub, it buzzes with energy day and night, drawing a diverse population eager to explore its unique offerings. Strategically located within the city, Koreatown offers unparalleled accessibility and a passionate community, making it an ideal destination for businesses to flourish and connect.



be in **the center** of it all







2 MILE

# demographics



POPULATION

355,213



AVG. HH INCOME

\$76,533



AVG. HH SIZE

2.48



HOUSING UNITS

151,753



POPULATION 15+

293,061



BUSINESSES

16,711



EMPLOYEES

115,984



MEDIAN AGE

35.5



BACHELOR'S DEGREE

25.0%



GRADUATE DEGREE

8.2%



DAYTIME WORKERS

115,787



DAYTIME RESIDENTS

178,693





# *california marketplace*

**Grocery-Anchored Center**  
at 450 Western Ave

CALL  
**+1 213 613 3272**

**Derrick Moore**  
Lic. 01029938  
[derrick.moore@cbre.com](mailto:derrick.moore@cbre.com)

**Shiho Takei Moore**  
Lic. 02224981  
[shiho.moore@cbre.com](mailto:shiho.moore@cbre.com)

**Diandra Dillon**  
Lic. 02210049  
[diandra.dillon@cbre.com](mailto:diandra.dillon@cbre.com)

© 2025 CBRE, Inc. All rights reserved. This information has been obtained from reliable sources but has not been verified for accuracy or completeness. CBRE, Inc. makes no guarantee, representation, or warranty and accepts no responsibility or liability for the accuracy, completeness, or reliability of the information contained herein. You should conduct a careful, independent investigation of the property and verify all information. Any reliance on this information is solely at your own risk. CBRE and the CBRE logo are service marks of CBRE, Inc. All other marks displayed on this document are the property of their respective owners, and the use of such marks does not imply any affiliation with or endorsement of CBRE. Photos herein are the property of their respective owners. Use of these images without the express written consent of the owner is prohibited.

**CBRE**

