

989

MARKET STREET

SAN FRANCISCO, CA

 **BLICK** art materials

CUSTOM FRAMING
FINE ART PRINTING

TCP
TOUCHSTONE
COMMERCIAL PARTNERS

ZACH HAUPERT zhaupert@tcpre.com
D 415.539.1121 | C 415.812.1219

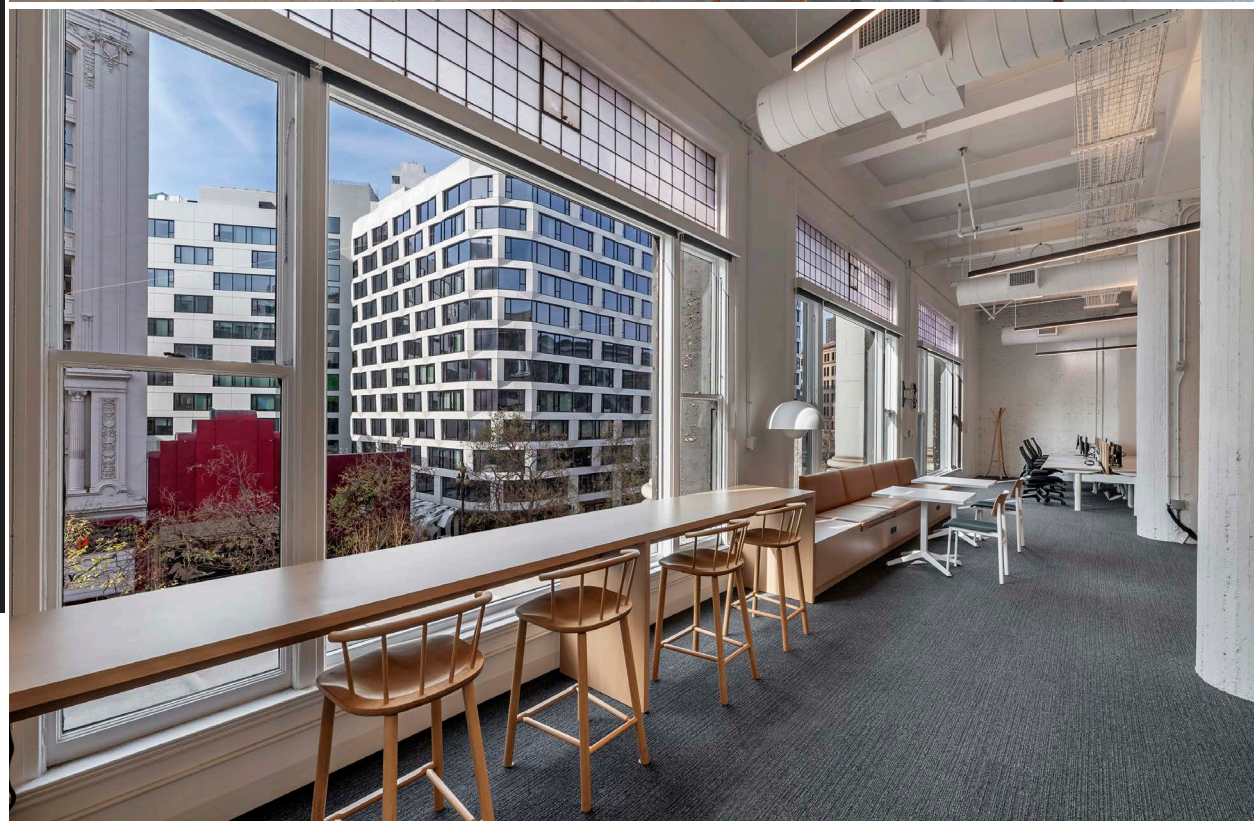
MICHAEL SANBERG msanberg@tcpre.com
D 415.539.1103 | C 415.697.6088

WWW.TCPRE.COM



989 MARKET STREET,
SAN FRANCISCO, CA 94103

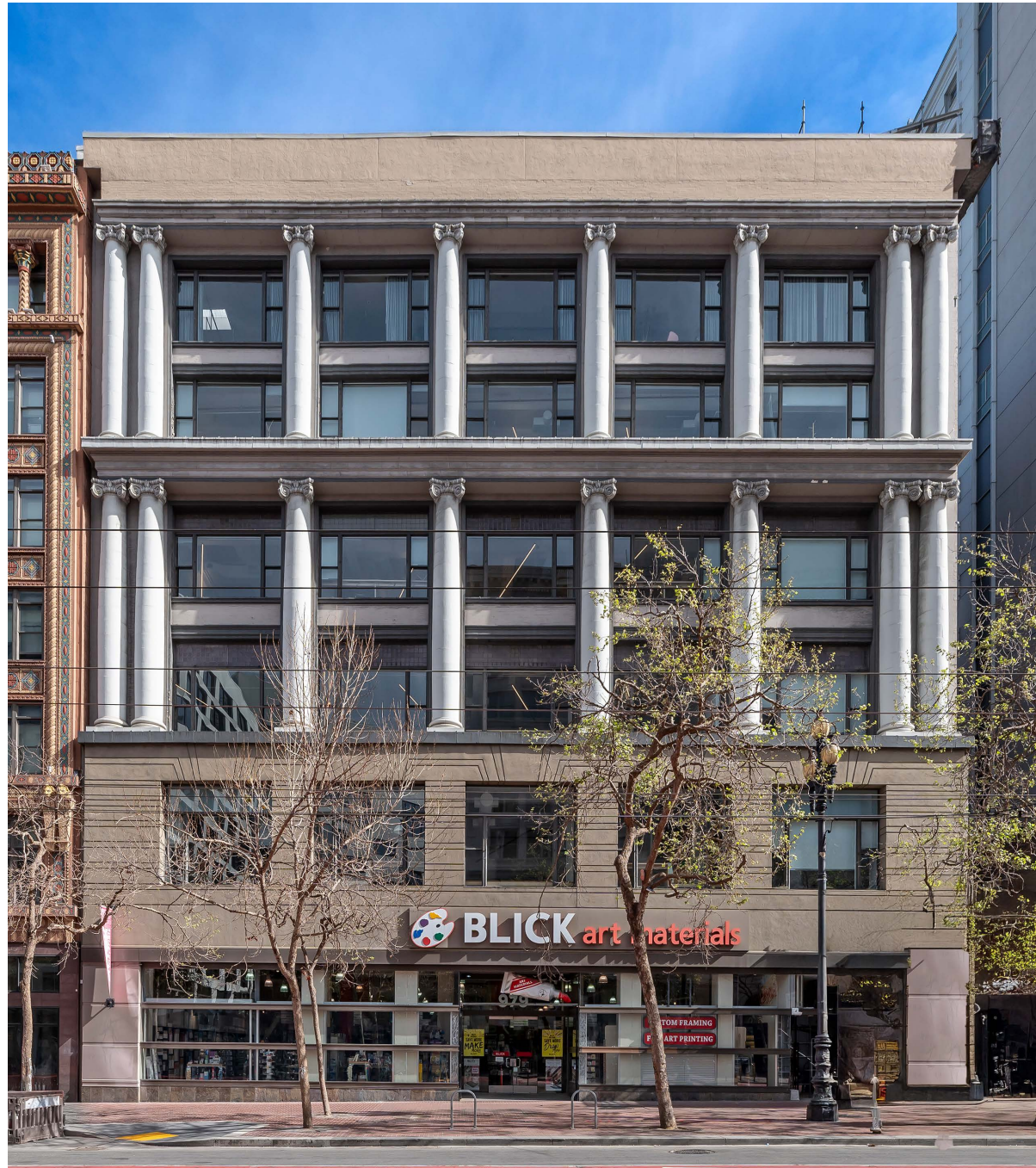
03	BUILDING SUMMARY
04	PROPERTY SUMMARY
05-06	SIXTH FLOOR
07-08	FIFTH FLOOR
09-10	FOURTH FLOOR
11-12	THIRD FLOOR
13-14	SECOND FLOOR
15	LOCATION OVERVIEW
16-17	NEARBY AMENITIES



**989 MARKET STREET,
SAN FRANCISCO, CA 94103**

BUILDING SUMMARY

6	SIXTH FLOOR +/- 18,222 SQUARE FEET 14'9" CEILING HEIGHTS
5	FIFTH FLOOR +/- 18,222 SQUARE FEET 11'2" CEILING HEIGHTS
4	FOURTH FLOOR +/- 18,222 Square Feet 14'8" CEILING HEIGHTS
3	THIRD FLOOR +/- 18,222 Square Feet 15'2" CEILING HEIGHTS
2	SECOND FLOOR +/- 18,222 Square Feet 14'9" CEILING HEIGHTS
	TOTAL +/- 91,110 Square Feet



PROPERTY SUMMARY



ASKING RENTAL RATE

High \$30's

PER SQUARE FOOT PER YEAR, INDUSTRIAL GROSS



USE

Multi-Use Property

OFFICE, HQ, RETAIL (GROUND FLOOR)



AVAILABLE

Immediately

100% MOVE-IN READY CONDITION - FULLY FURNISHED



BUILDING ATTRIBUTES



FULLY FURNISHED / PLUG AND
PLAY OFFICE SPACE



FULL HVAC THROUGHOUT



GREAT SIGNAGE AND VISIBILITY



GENSLER DESIGNED AND
RENOVATED SPACE



PASSENGER ELEVATORS



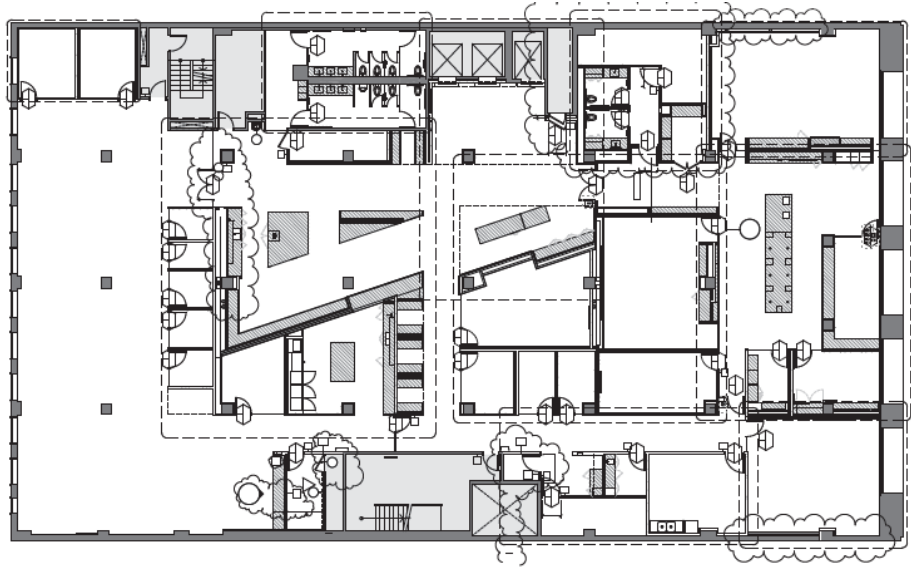
ONSITE SECURITY 24/7



ACCESS TO MANY
NEIGHBORHOOD AMENITIES

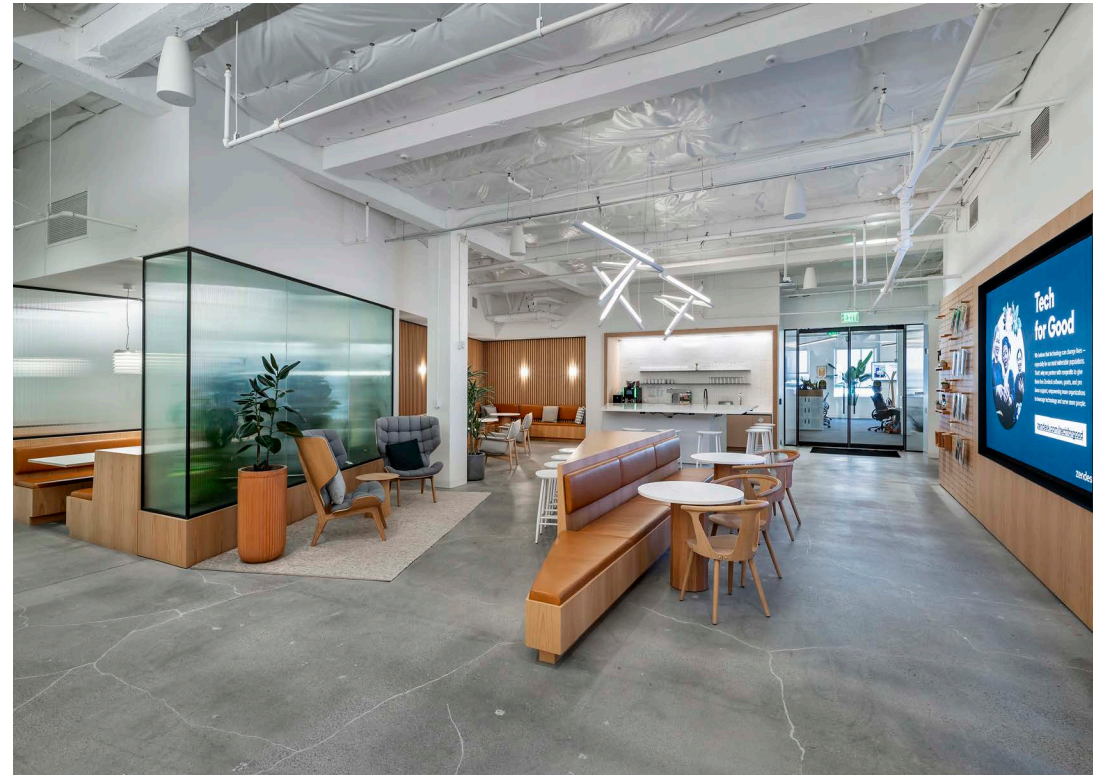


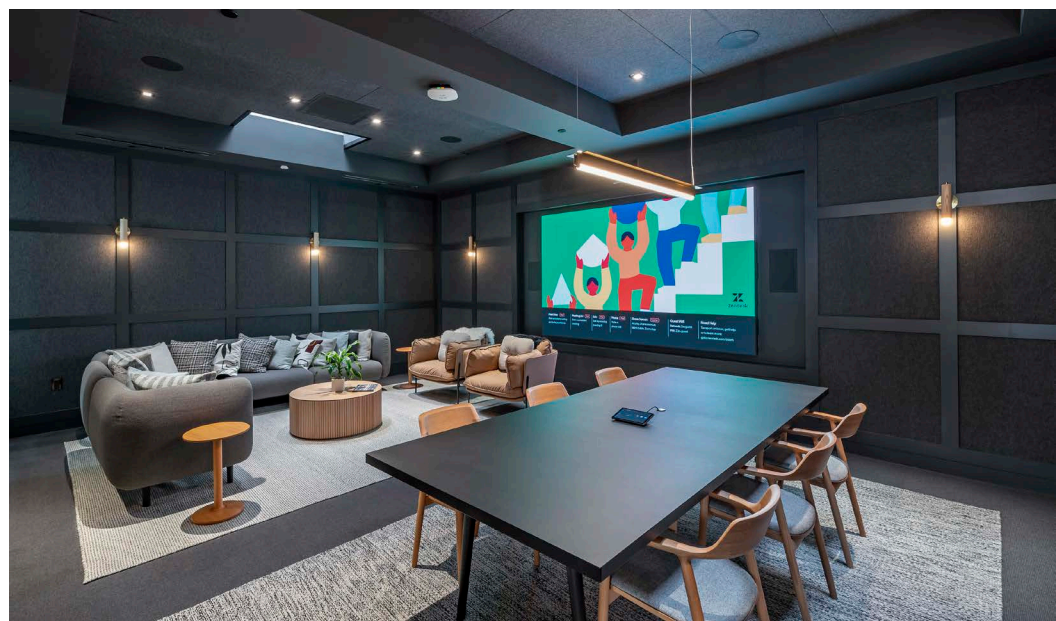
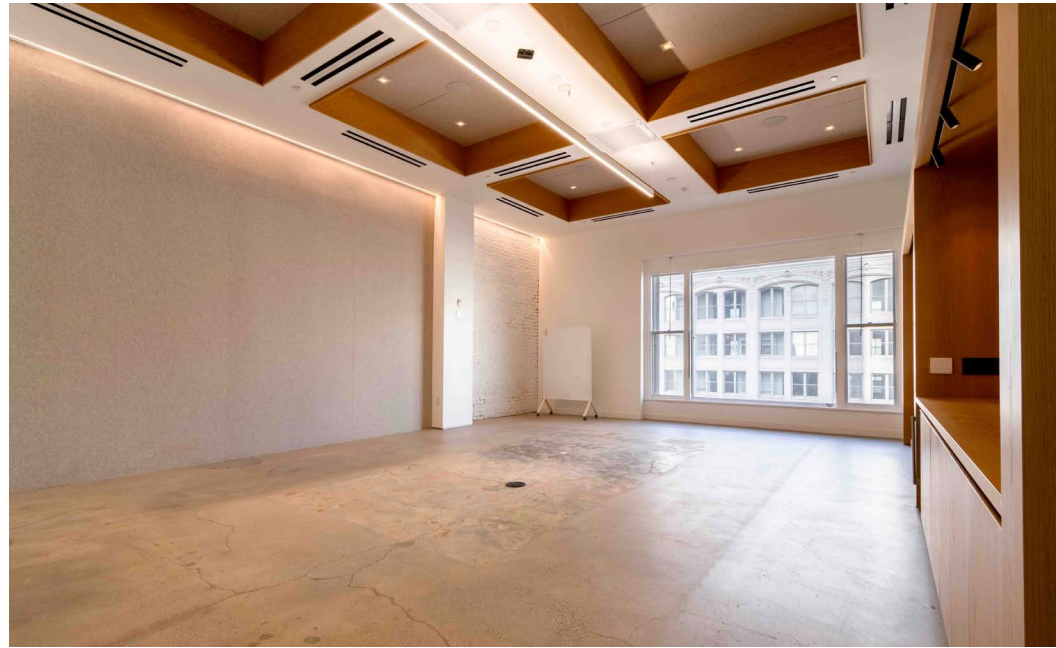
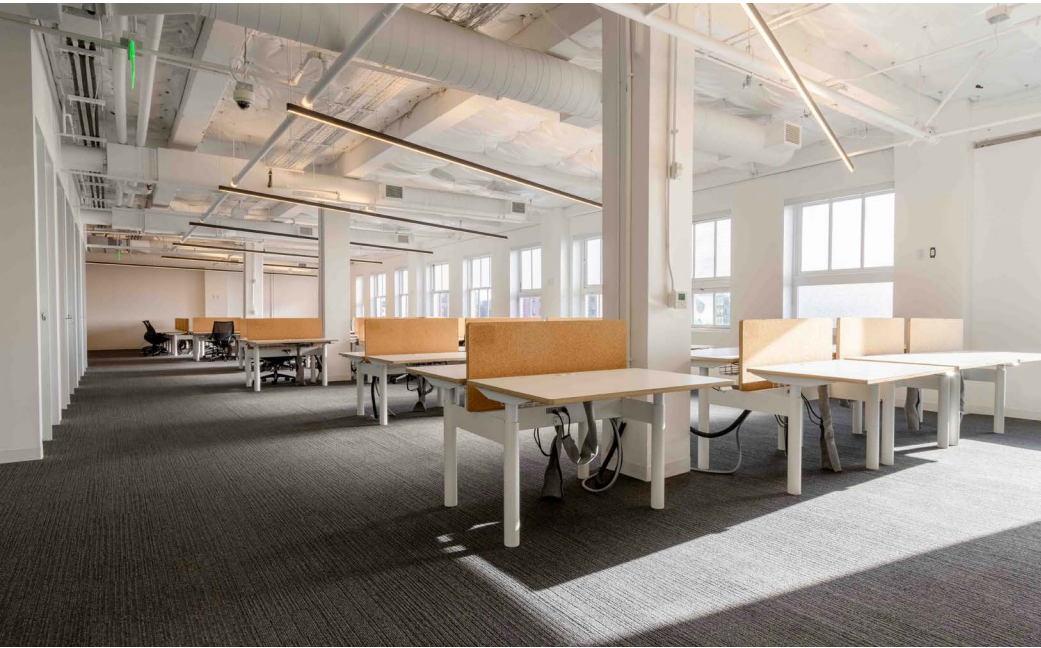
WALKING DISTANCE TO
TRANSIT OPTIONS

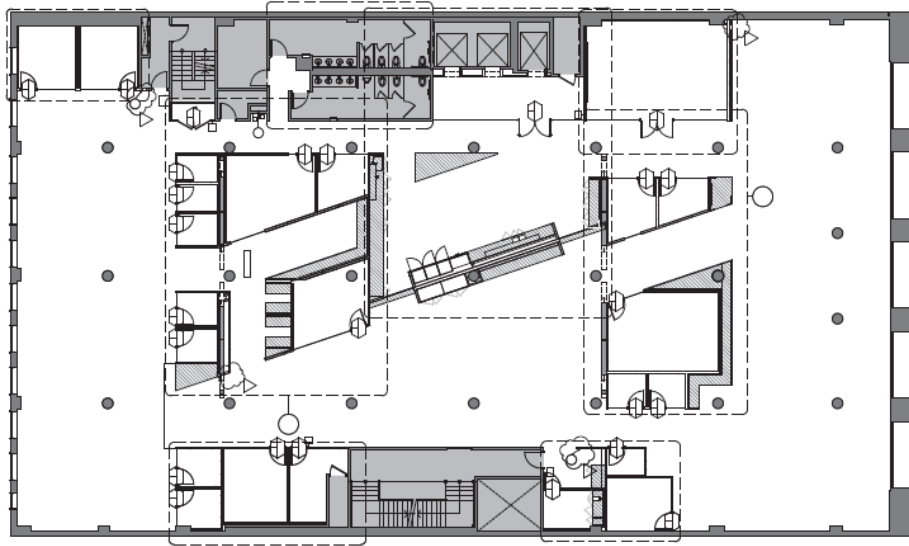


SIXTH FLOOR ATTRIBUTES

- +/- 18,222 Square Feet
- Large Kitchen and Open Break Room
- Spacious Client Lounge / Theatre
- Three (3) Large Conference Rooms
- Seven (7) Meeting Rooms
- Five (5) Phone Rooms
- One (1) Entertainment / Sound Room
- Designer Quality FF&E In Place
- ~14'9" Ceiling Heights

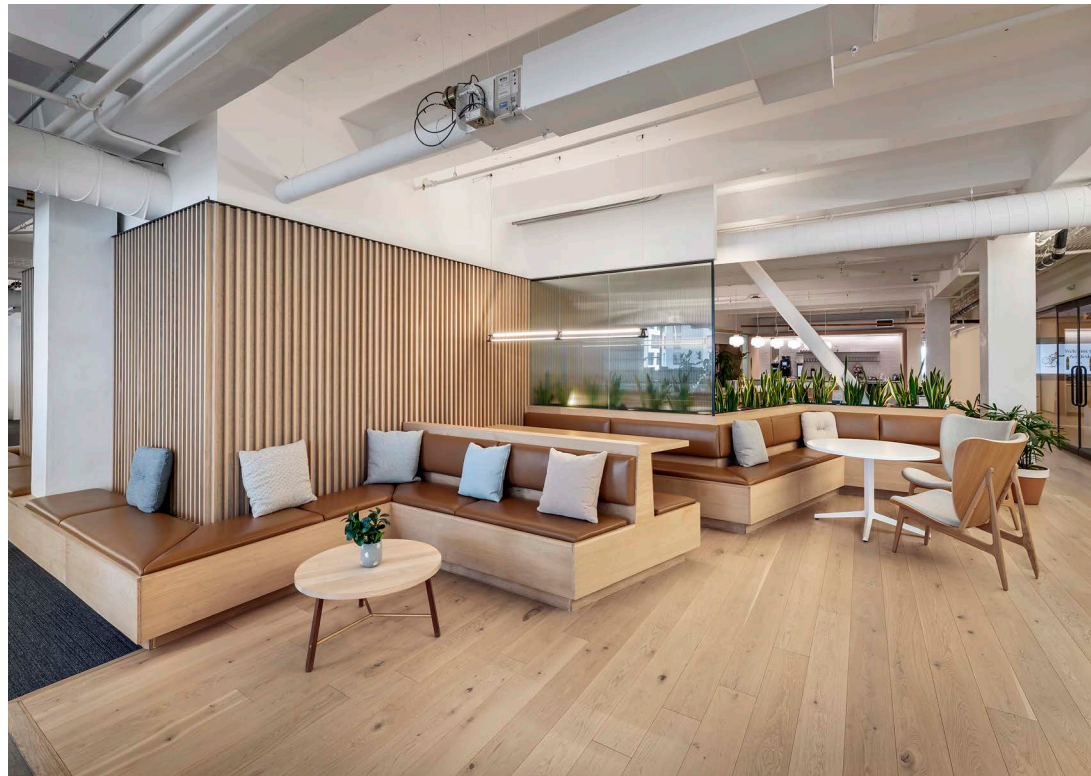
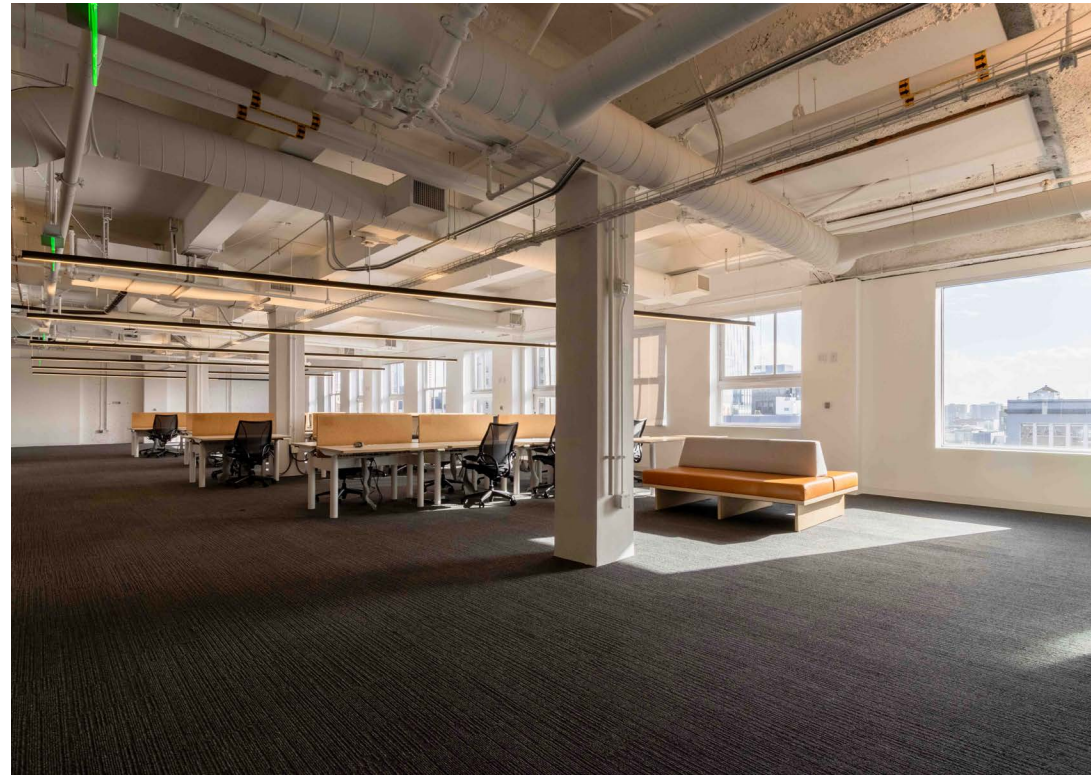


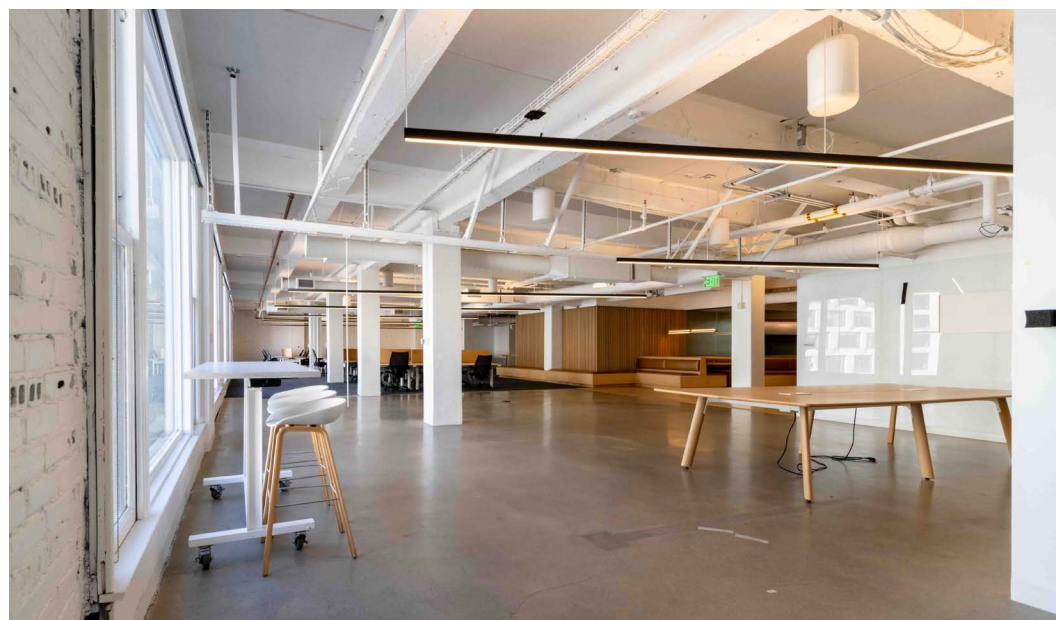
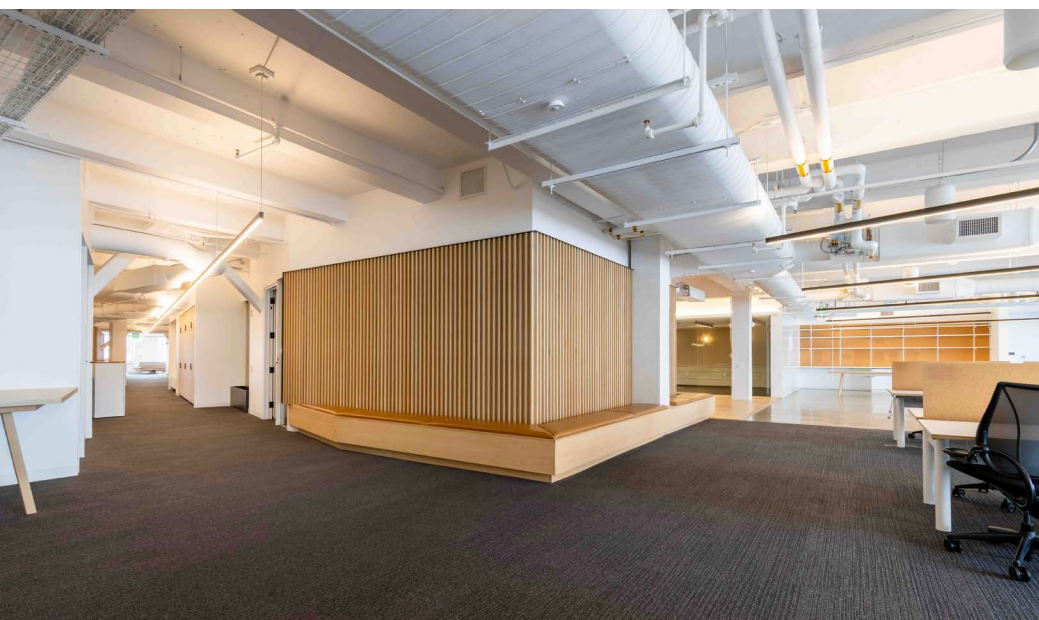
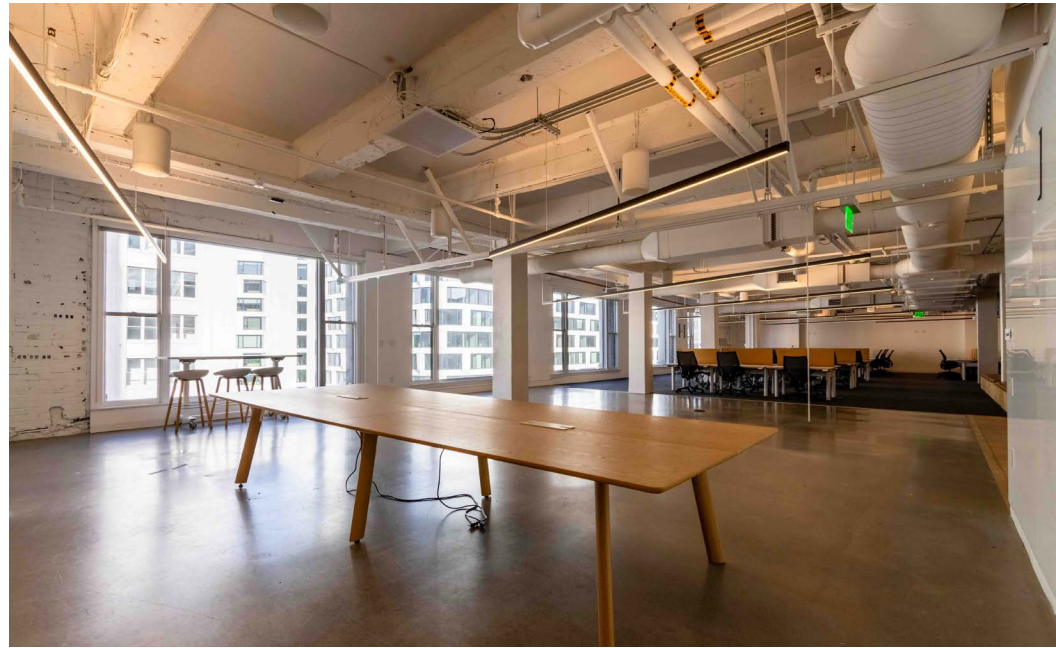
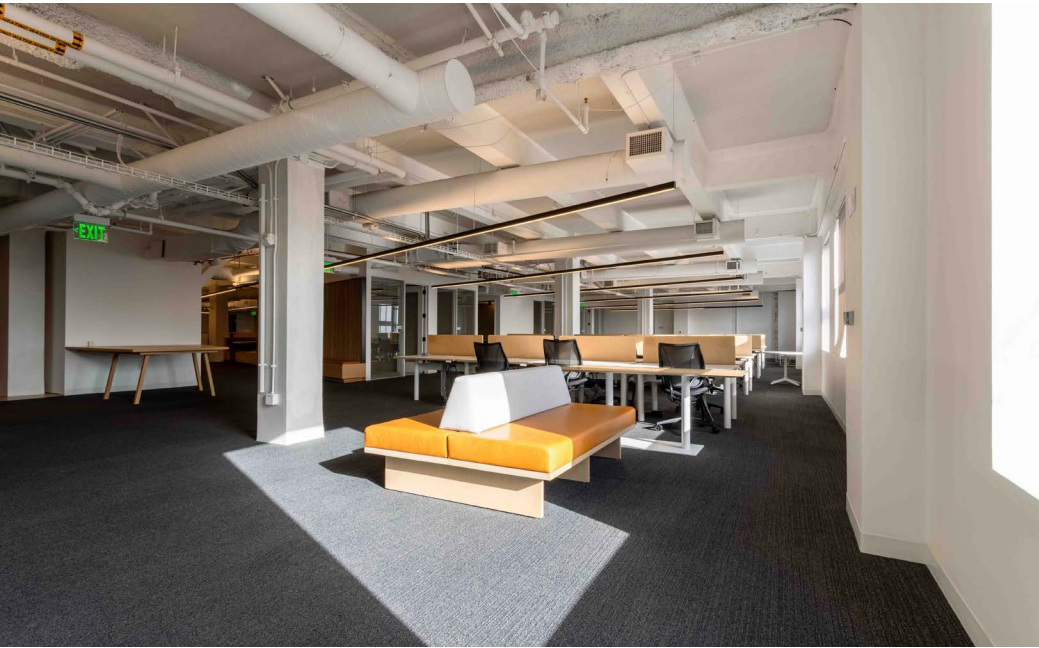


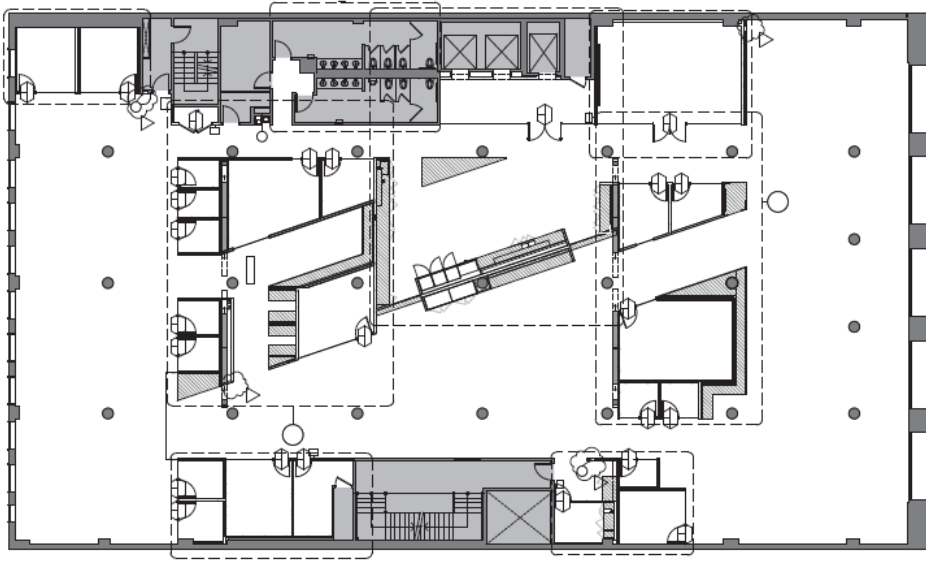


FIFTH FLOOR ATTRIBUTES

- +/- 18,222 Square Feet
- Large Kitchen/Break Area
- Two (2) Conference Rooms
- Four (4) Meeting Rooms
- Twelve (12) Phone Rooms
- Designer Quality FF&E In Place
- ~11'2" Ceiling Heights

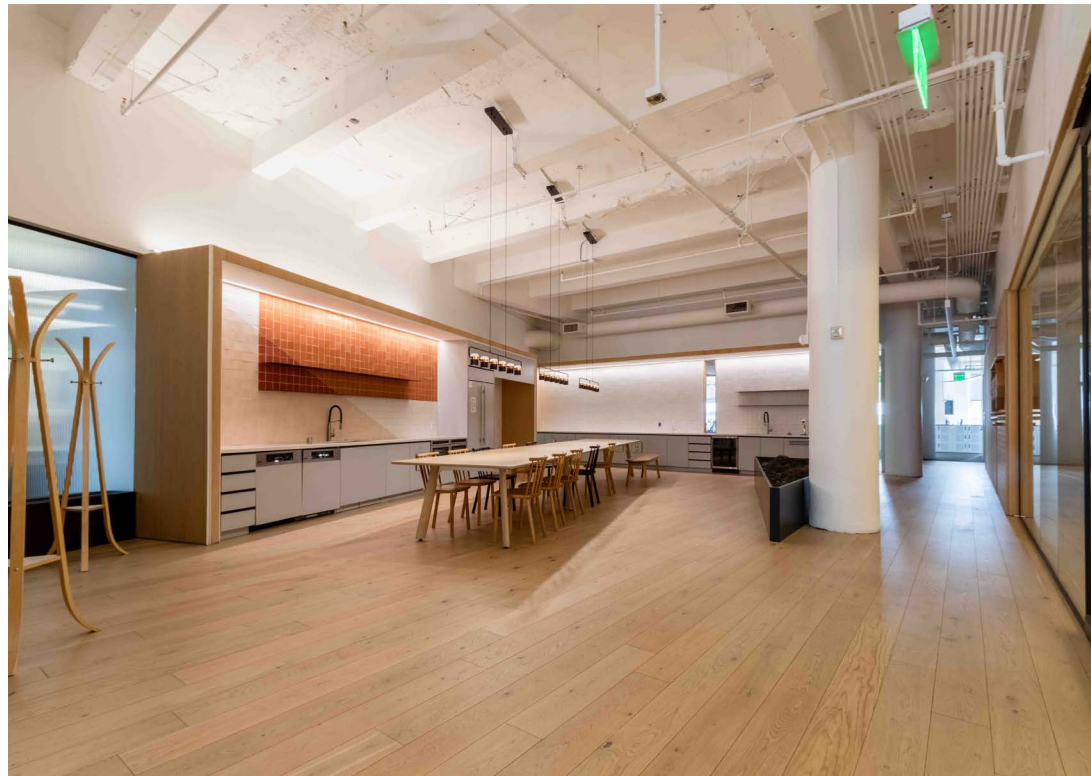
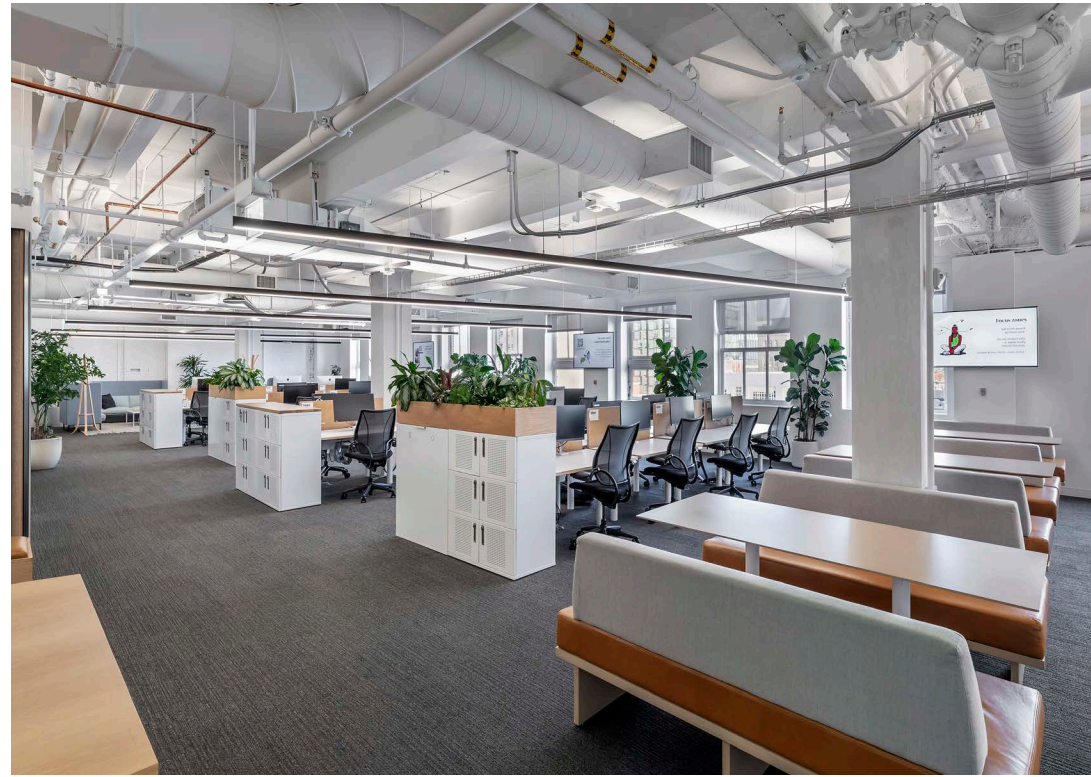


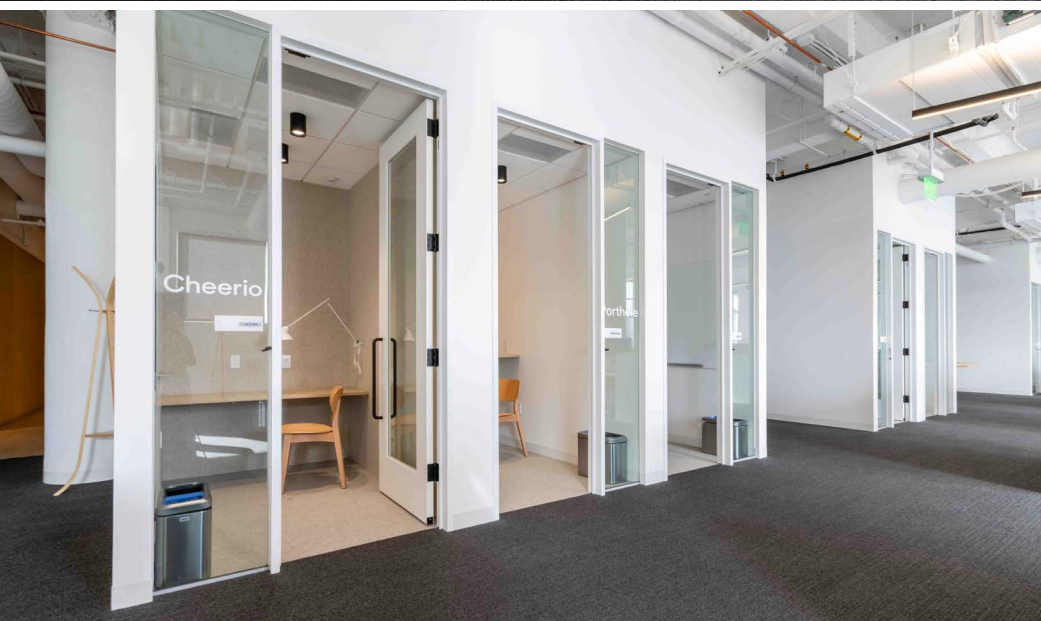
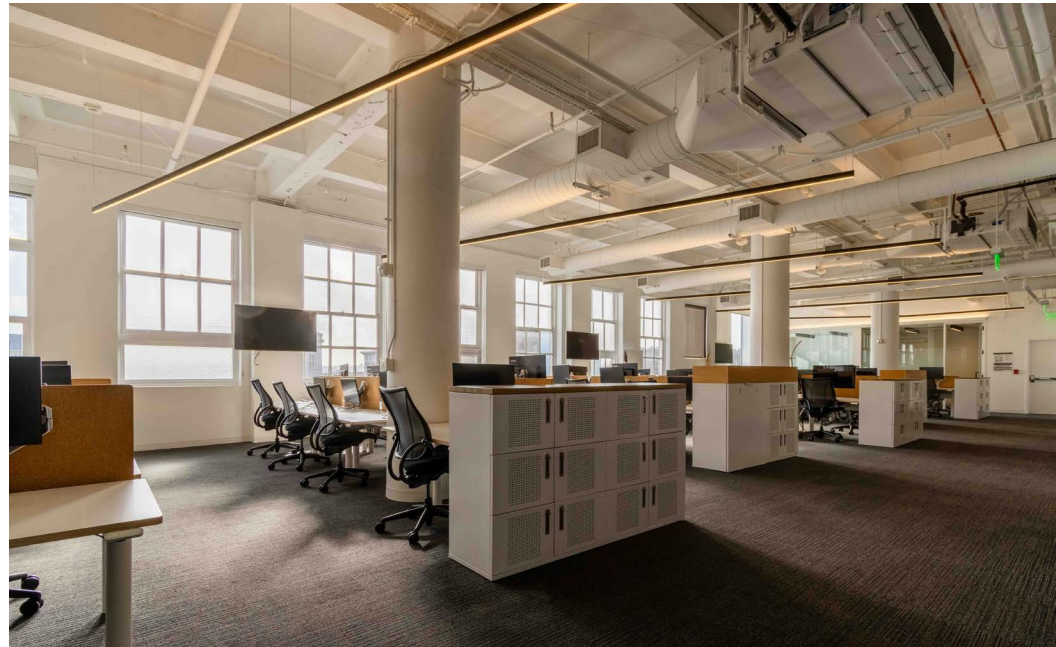
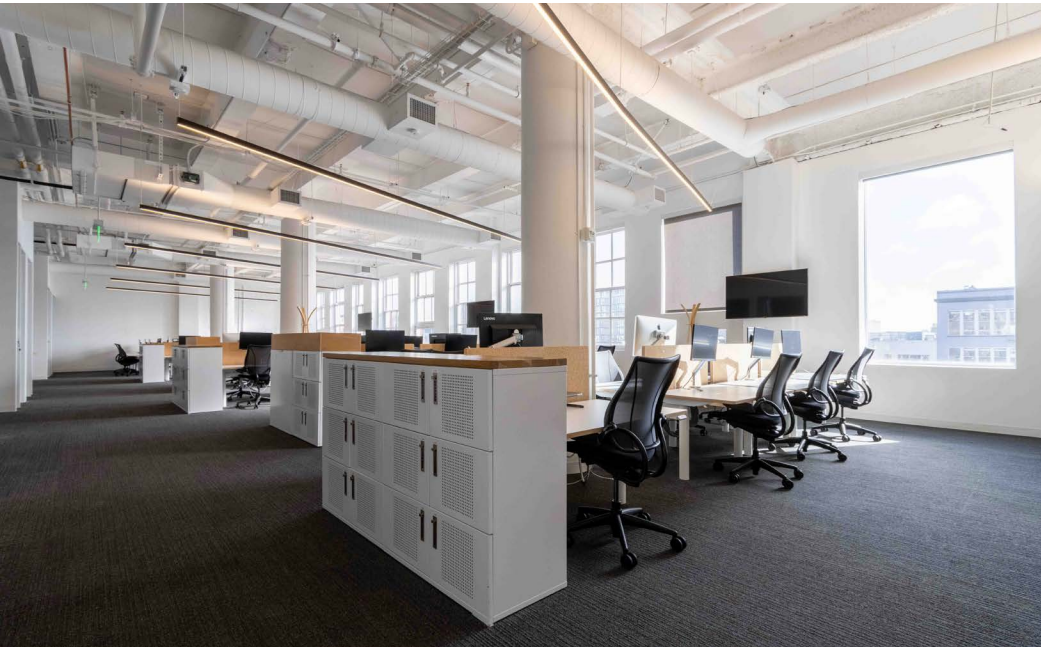


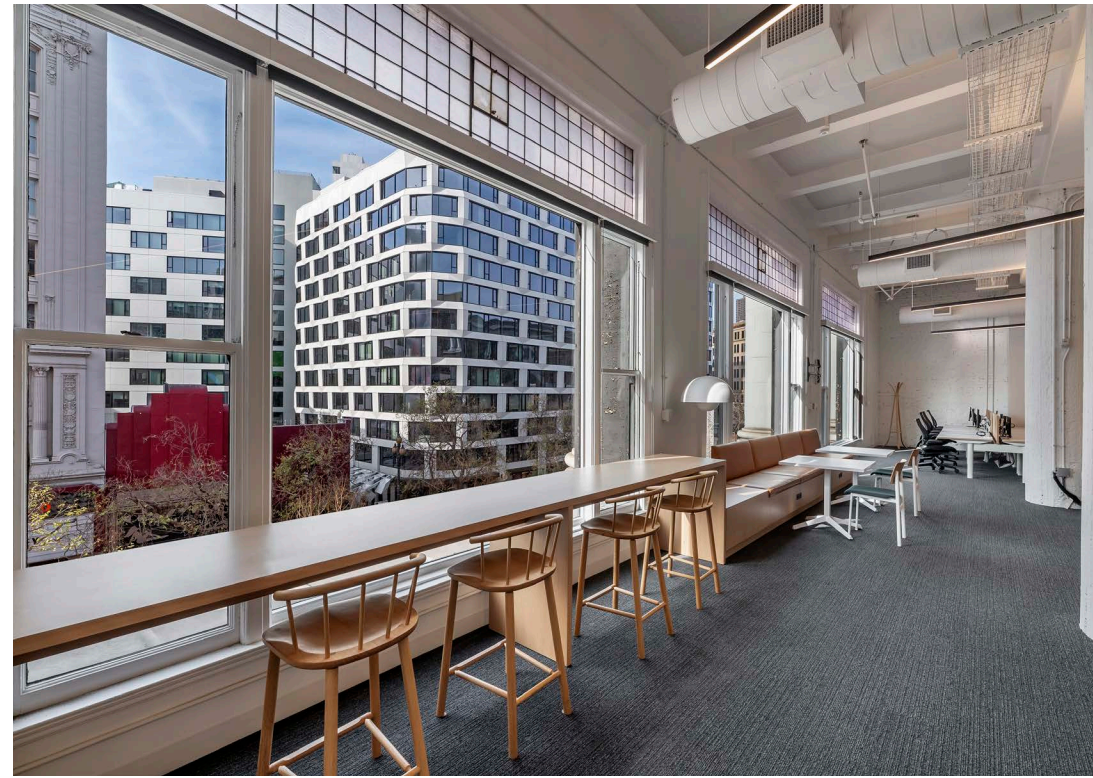
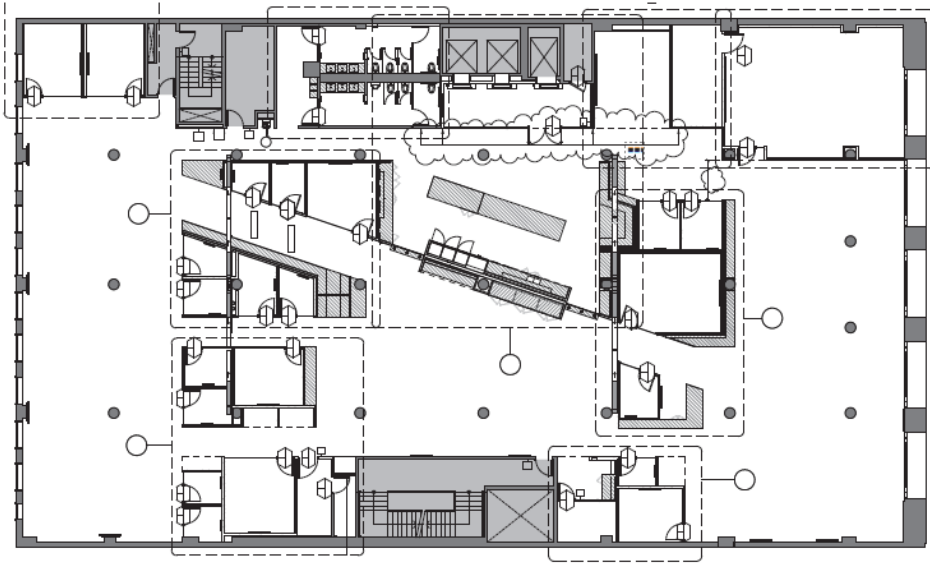


FOURTH FLOOR ATTRIBUTES

- +/- 18,222 Square Feet
- Large Kitchen/Break Area
- Three (3) Conference Rooms
- Seven(7) Meeting Rooms
- Eleven (11) Phone Rooms
- One (1) Mother's Room
- Designer Quality FF&E In Place
- ~14'8" Ceiling Heights

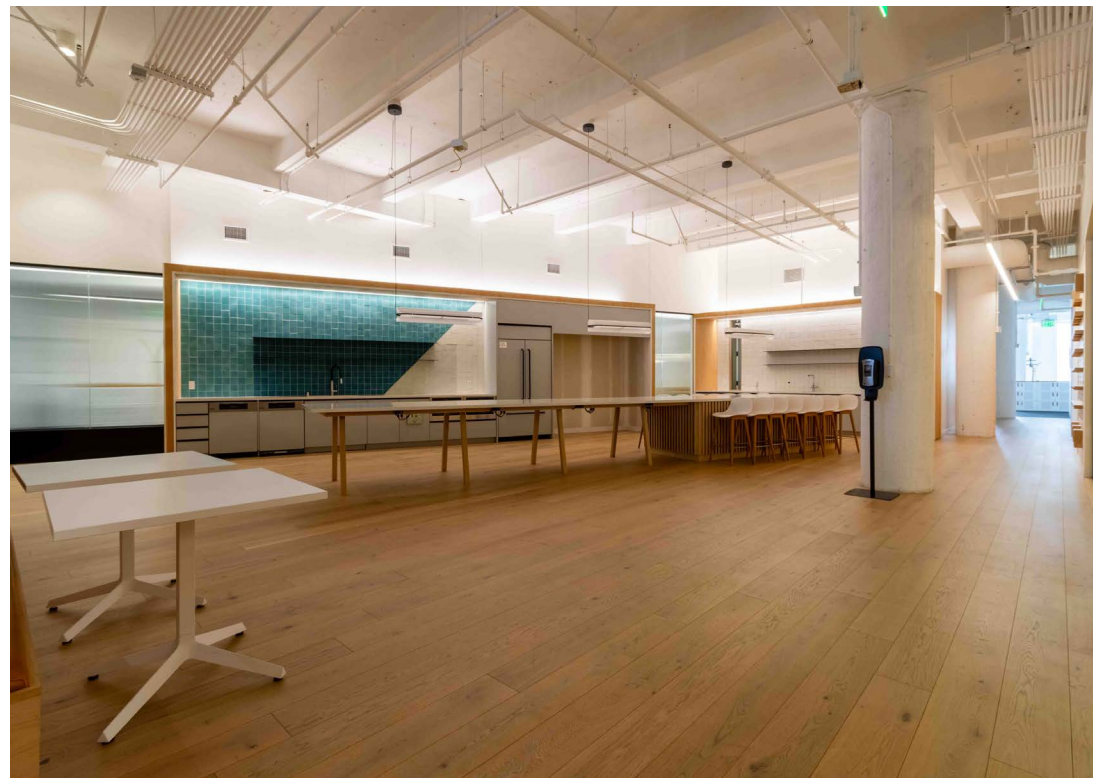


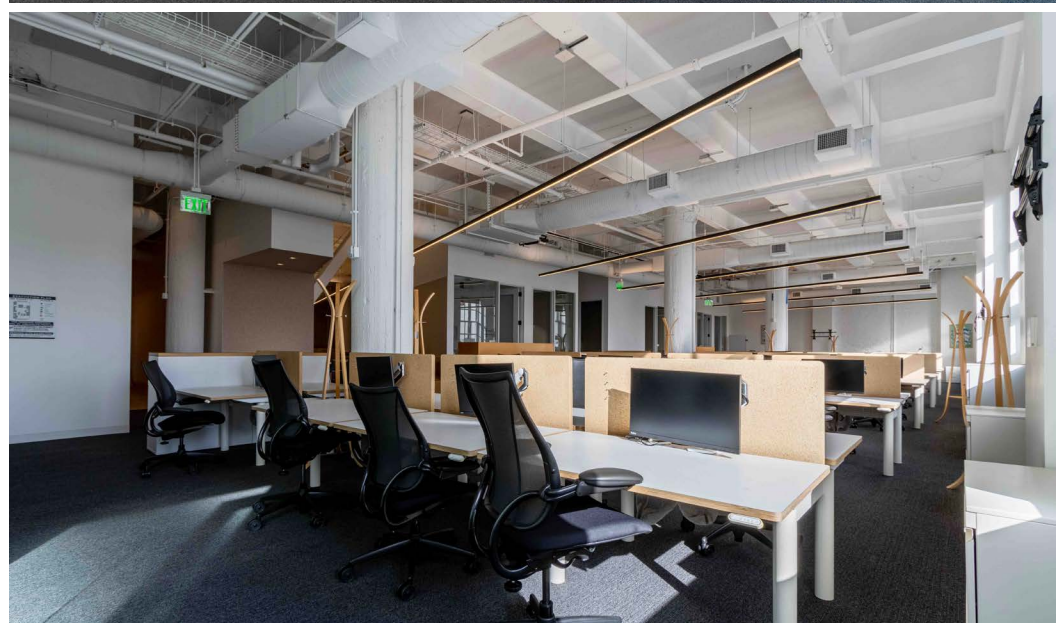
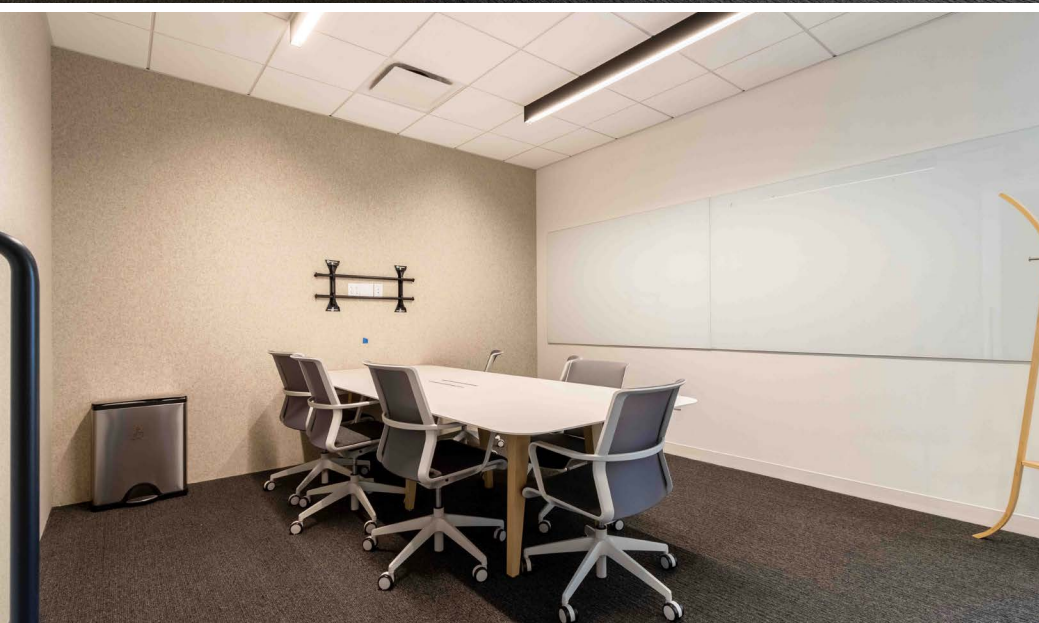
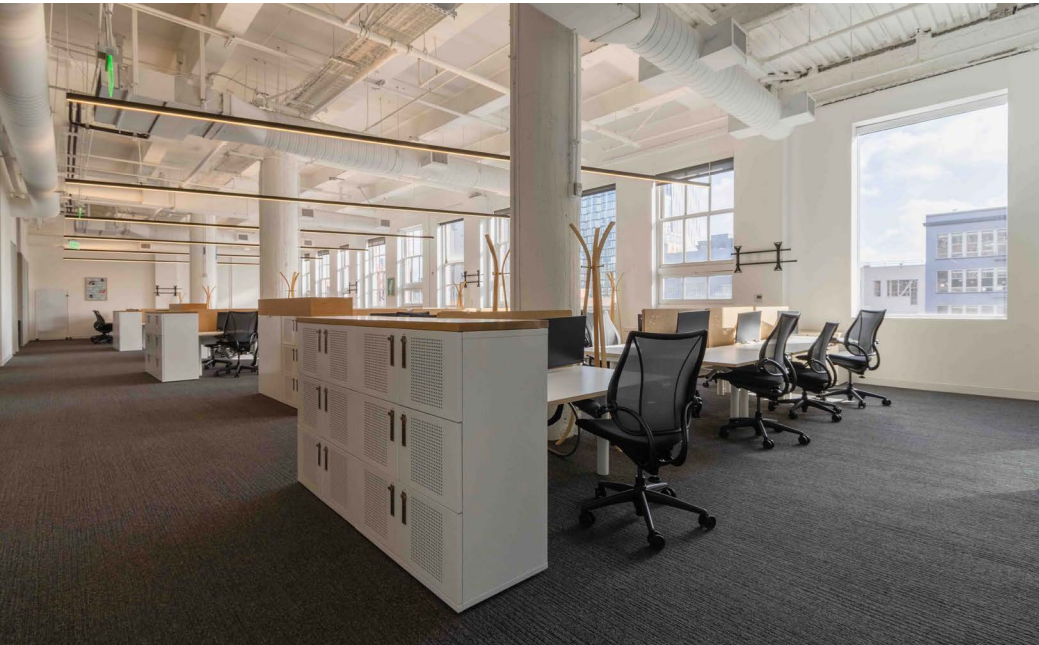


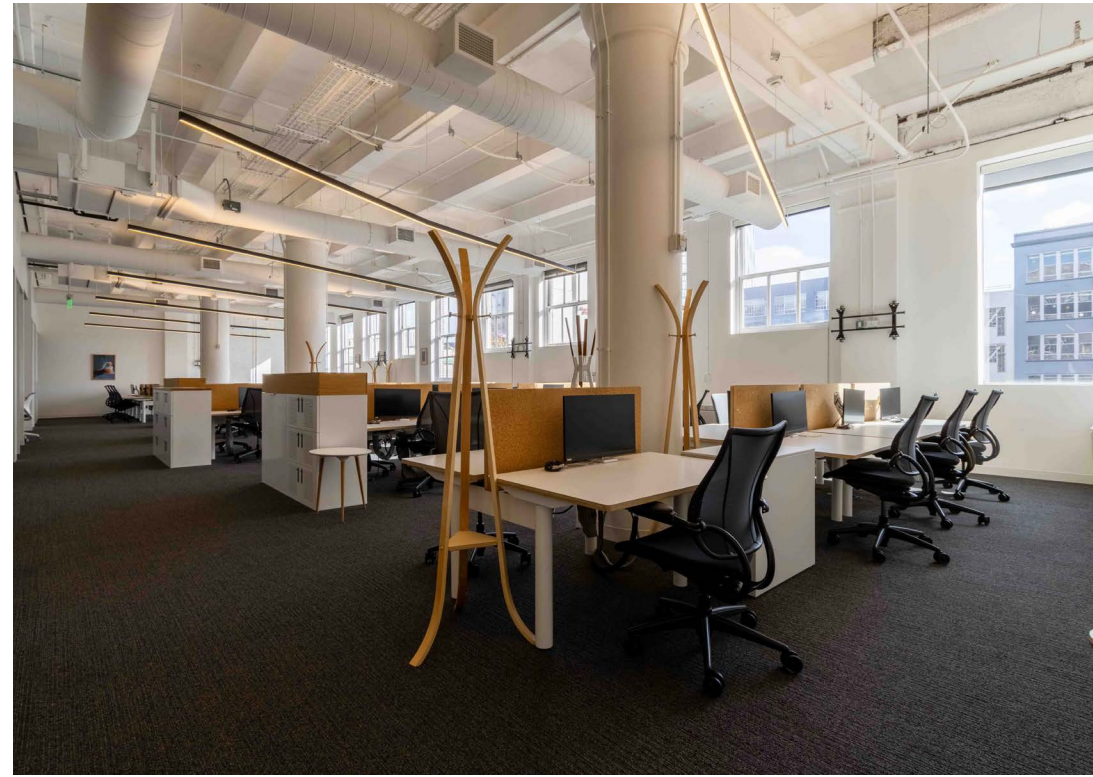
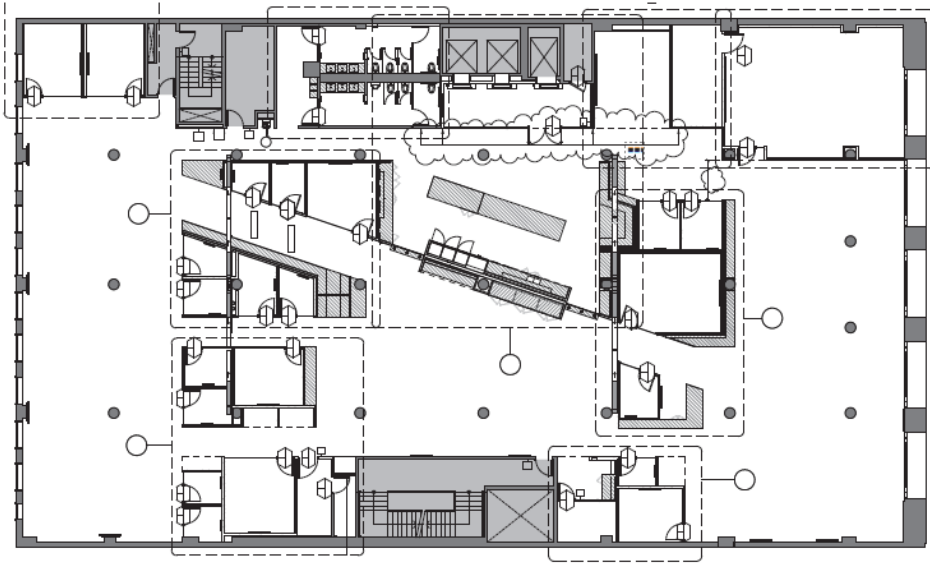


THIRD FLOOR ATTRIBUTES

- +/-18,222 Square Feet
- Large Kitchen/Break Area
- Two (2) Conference Rooms
- Six (6) Meeting Rooms
- Fourteen (14) Phone Rooms
- One (1) Wellness Room
- Designer Quality FF&E In Place
- ~15'2" Ceiling Heights



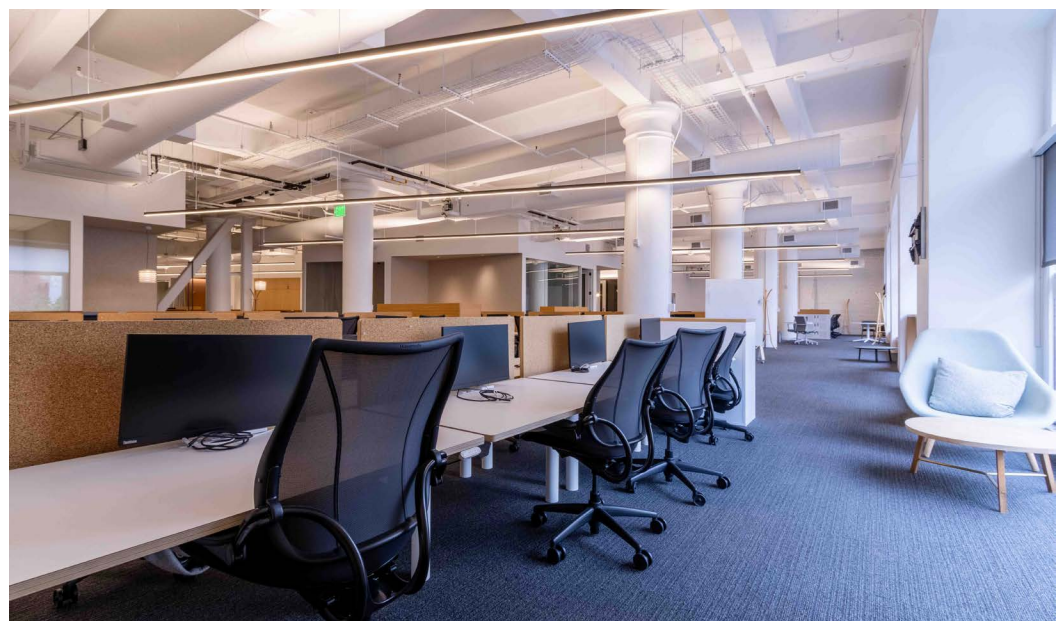
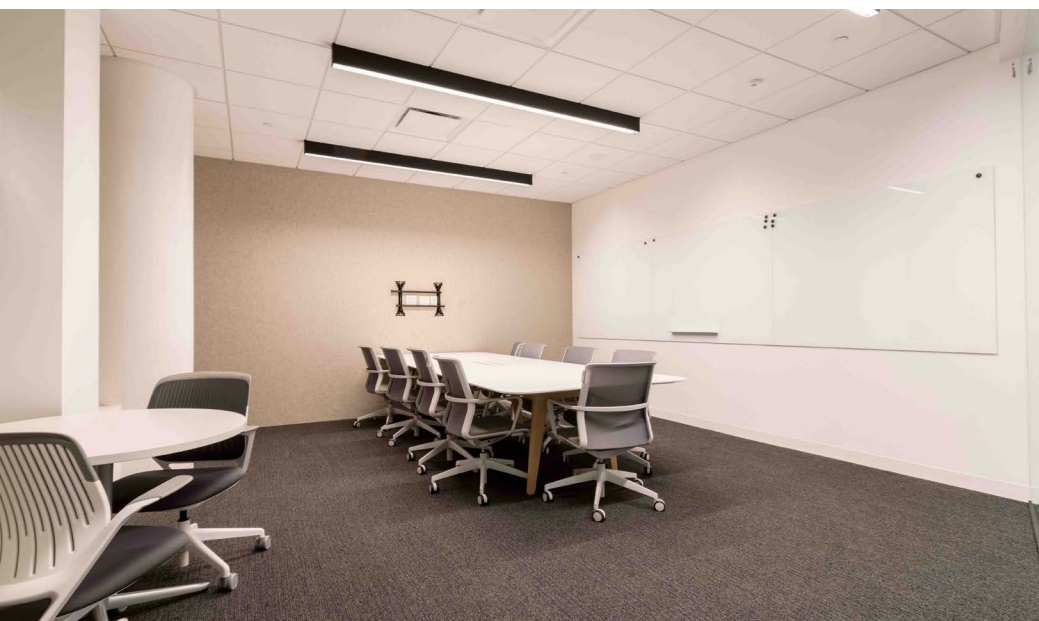
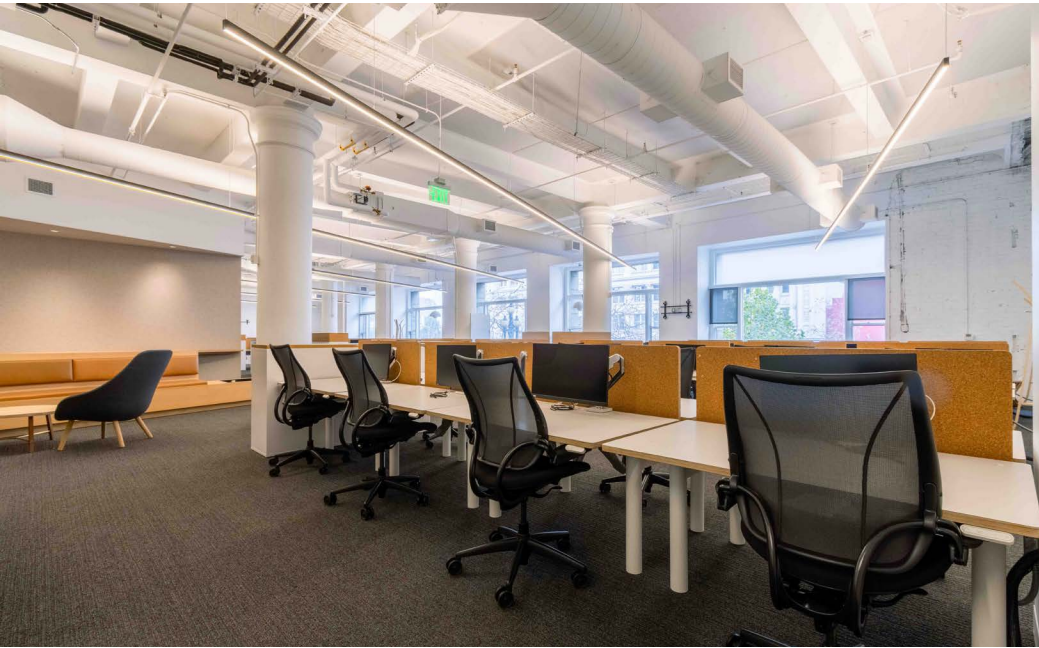




SECOND FLOOR ATTRIBUTES

- +/-18,222 Square Feet
- Large Kitchen/Break Area
- Four (4) Conference Rooms
- Four (4) Meeting Rooms
- Eleven (11) Phone Rooms
- One (1) Mother's Room
- Designer Quality FF&E In Place
- ~14'8" Ceiling Heights





LOCATION OVERVIEW

Desirable Mid-Market location,
walkable to nearby amenities and
to surrounding neighborhoods.



01 MIN to Market St Muni

05 MIN to Powell BART Station

12 MIN to Civic Center BART



04 MIN to Union Square

06 MIN to Hayes Valley

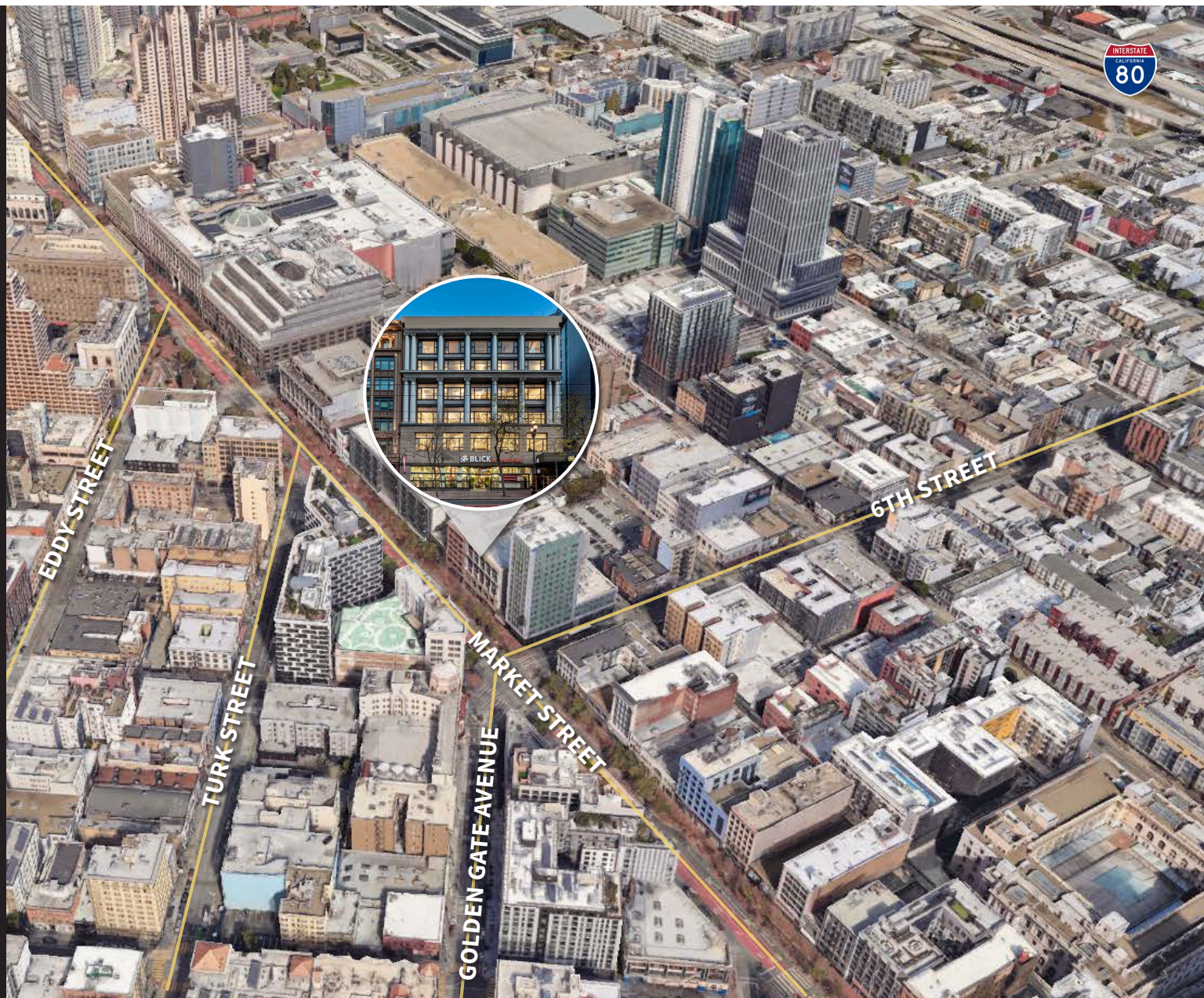
08 MIN to Financial District



04 MIN to 280 On-Ramp

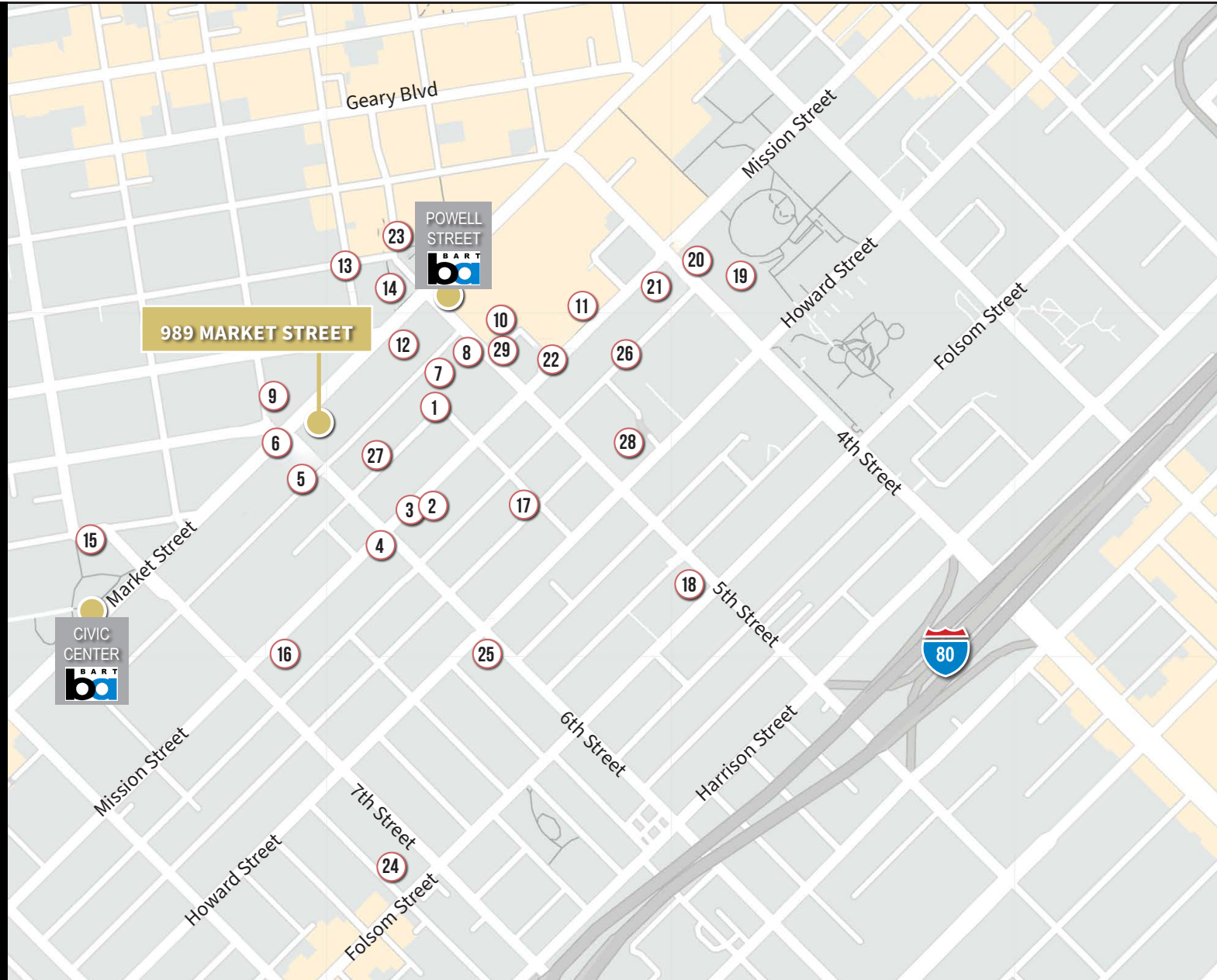
05 MIN to 101 On-Ramp

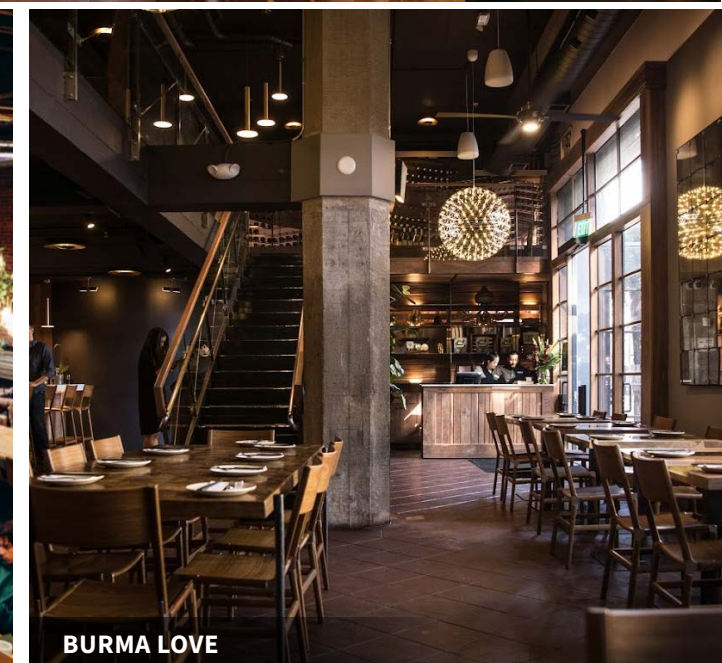
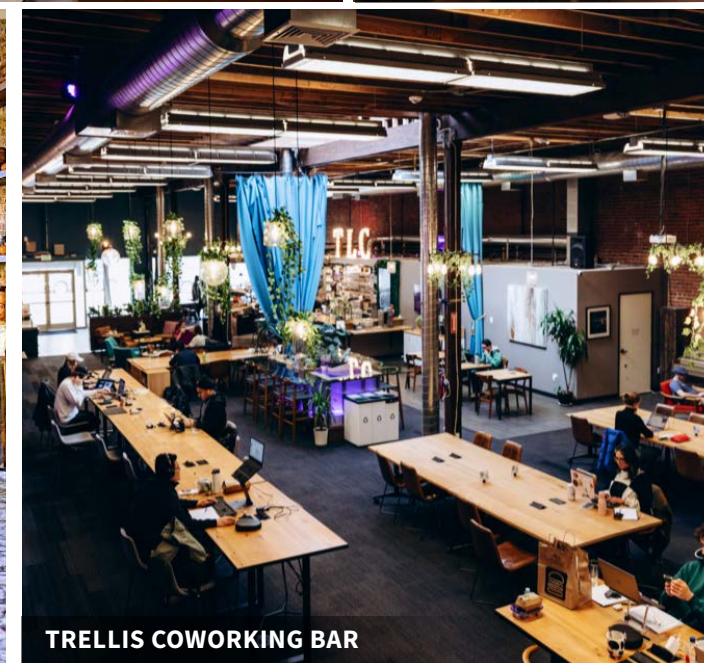
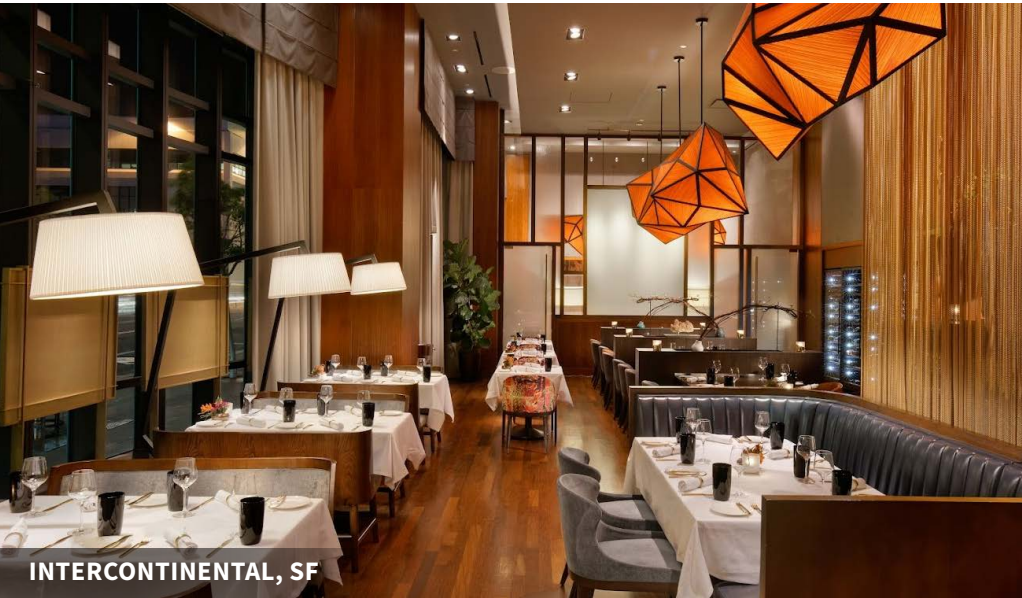
05 MIN to 80 On-Ramp



AMENITIES

- 1..... 54 Mint Cucina Romana
- 2..... Trellis Coworking
- 3..... The Pawn Shop
- 4..... Miss Saigon
- 5..... Montesacro Pinseria - SoMa
- 6..... Taqueria Cancun
- 7..... Burma Love
- 8..... Mo'z Cafe
- 9..... The Warfield
- 10..... San Francisco Centre
- 11..... Bloomingdale's
- 12..... The Melt
- 13..... Pandora Karaoke & Bar
- 14..... Carl's Jr.
- 15..... Arsicault Bakery Civic Center
- 16..... Birdsong
- 17..... Java Trading Co.
- 18..... Mr. East Kitchen
- 19..... Metreon
- 20..... Target
- 21..... Starbucks
- 22..... Executive Order Bar & Lounge
- 23..... Barbary Coast
- 24..... Sightglass Coffee
- 25..... Bini's Kitchen
- 26..... 5th & Mission Garage
- 27..... Priority Parking Lot
- 28..... InterContinental SF
- 29..... Hotel Zetta







TCP
TOUCHSTONE
COMMERCIAL PARTNERS

Corp. Lic. 01112906
www.tcpre.com

ZACH HAUPERT

D 415.539.1121 C 415.812.1219
zhaupert@tcpre.com DRE # 01822907

MICHAEL SANBERG

D 415.539.1103 C 415.697.6088
msanberg@tcpre.com DRE # 01930041

This document has been prepared by Touchstone Commercial Partners for advertising and general information only. Touchstone Commercial Partners makes no guarantees, representations or warranties of any kind, expressed or implied, regarding the information including, but not limited to, warranties of content, accuracy and reliability. Any interested party should undertake their own inquiries as to the accuracy of the information. Touchstone Commercial Partners excludes unequivocally all inferred or implied terms, conditions and warranties arising out of this document and excludes all liability for loss and damages arising there from. This publication is the copyrighted property of Touchstone Commercial Partners and/or its licensor(s). ©2025. All rights reserved.