

# PARK OAKS SHOPPING CENTER

±700 – 5,950 SF

Bar/Restaurants/Office Space for Lease

16500 SAN PEDRO AVE  
SAN ANTONIO, TX 78232



## AVAILABLE:

±700 - 5,950 SF

## OCCUPANCY:

91%

## LEASE RATE:

Please call for rates; NNN: \$5.32 PSF

## TRAFFIC COUNTS

Hwy 281 - 163,542 VPD

## PROPERTY INFO:

- Located at the intersection of Hwy 281 and Thousand Oaks Drive
- Easy ingress/egress
- Excellent visibility from Hwy 281
- 3 Pylon signs available on property
- Ample parking for retail center
- Close proximity to San Antonio International Airport
- Anchored by Big Lots, Dollar Tree, and House of Air trampoline park



**RPD Catalyst LLC**  
1801 S. La Cienega Blvd  
Suite 301  
Los Angeles, CA 90035

**David Saunders**  
Leasing Broker  
210.410.3024 Mobile

dauidsaunders@kw.com

S P A C E F O R L E A S E



±700 - 5,950 SF Space for Lease

## AERIAL MAP



**RPD Catalyst LLC**  
1801 S. La Cienega Blvd  
Suite 301  
Los Angeles, CA 90035

**David Saunders**  
Leasing Broker  
210.410.3024 Mobile

dauidsaunders@kw.com

±700 - 5,900 SF Space for Lease

## SITE MAP

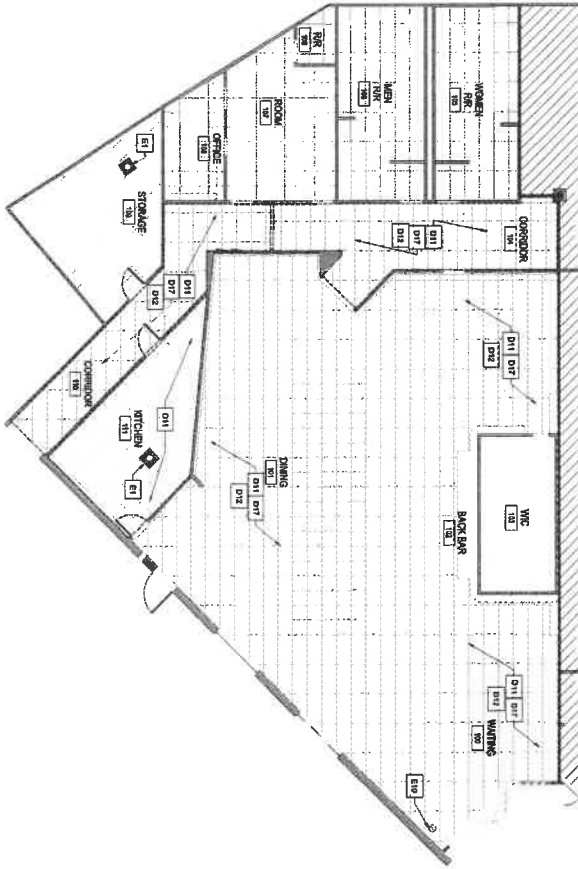


RPD Catalyst LLC  
1801 S. La Cienega Blvd  
Suite 301  
Los Angeles, CA 90035

David Saunders  
Leasing Broker  
210.410.3024 Mobile

davidsaunders@kw.com

**2** DEMOLITION REFLECTED CEILING PLAN



**1** DEMOLITION FLOOR PLAN

