

For Lease | McDowell Mountain Medical

9377 East Bell Road, Scottsdale, AZ 85260



- Multi-Tenant Medical Building For Lease
- \$38.00 Full Service Lease Rate
- New Common Area Improvements completed
- Direct access to Loop 101 from Bell Rd
- Great Monument and Digital Directory Signage
- Ample Parking and Covered Parking
- Built-Out Medical Office Suites Move-In Ready

www.menlocre.com/property

Stuart Milne, SIOR | CCIM
Executive Vice President
stuart@menlocre.com

Rich Andrus, MBA, CCIM, SIOR
Senior Vice President
rich@menlocre.com

P: 480.659.1777 • F: 480.535.5854
www.menlocre.com

For Lease | McDowell Mountain Medical

9377 East Bell Road, Scottsdale, AZ 85260

Property Summary



PROPERTY DESCRIPTION

Introducing a prime leasing opportunity at 9377 East Bell Road, Scottsdale, AZ, 85260. This multi-tenant Medical Office building boasts a full-service lease rate of \$38.00 and features newly completed common area improvements, elevating the professional environment for tenants. Conveniently situated with direct access to Loop 101 from Bell Rd, this property offers unparalleled connectivity for businesses. With its strategic location and competitive lease terms, this is an ideal opportunity for businesses, doctors and medical professionals seeking a modern and accessible commercial space in Scottsdale. Several suites are built out and move-in-ready for your practice or office space!

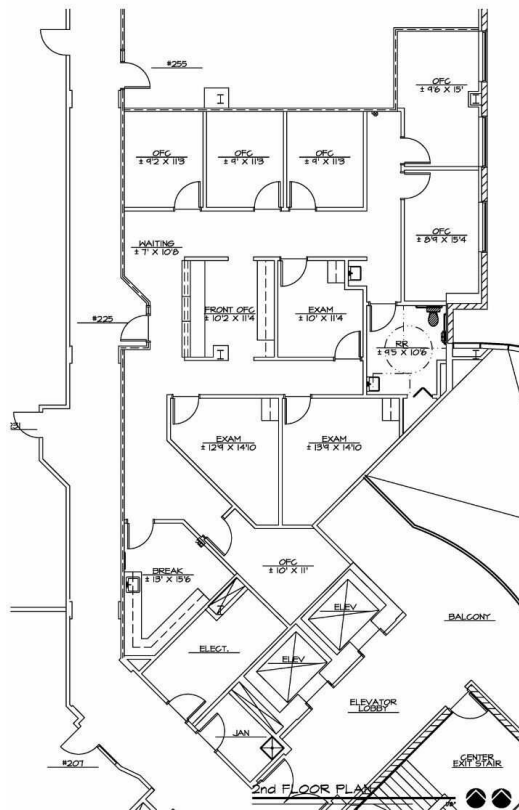
SPACES	SPACE SIZE	AVAILABILITY
Suite 225	2,524 SF	
Suite 307	2,294 SF	
Suite 363	2,131 SF	Available 6/1/25
Suite 379	1,729 SF	
Suite 385	1,134 SF	Available 6/1/25

For Lease | McDowell Mountain Medical

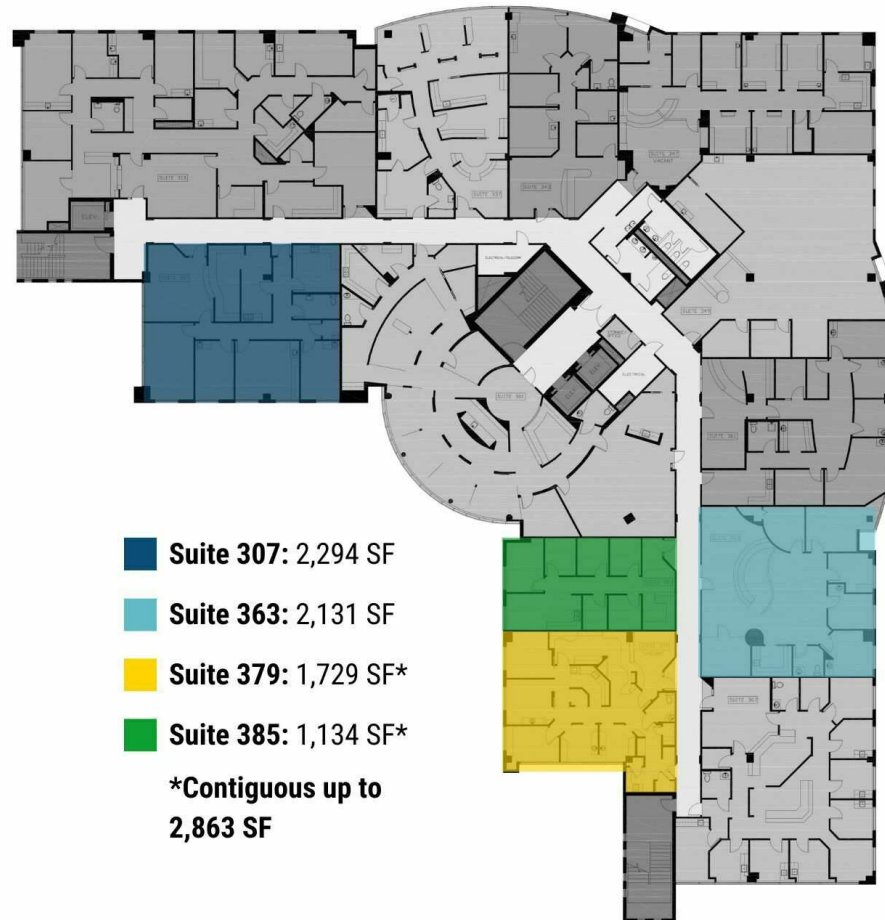
9377 East Bell Road, Scottsdale, AZ 85260

Floor Plan

Page 3



Suite 225: 2,524 SF



- Suite 307: 2,294 SF**
 - Suite 363: 2,131 SF**
 - Suite 379: 1,729 SF***
 - Suite 385: 1,134 SF***
- *Contiguous up to 2,863 SF**