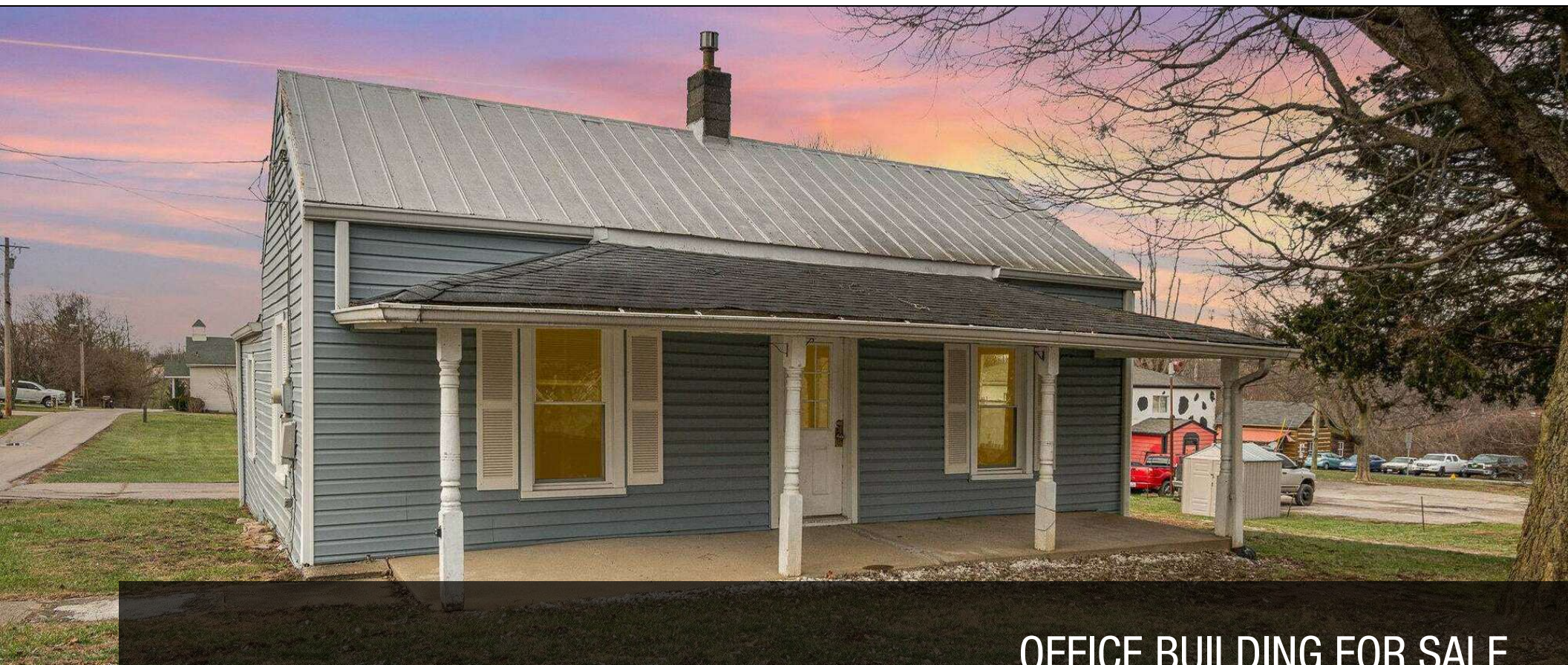




# 5919 N. Jefferson St

BURLINGTON, KY



OFFICE BUILDING FOR SALE

**KW COMMERCIAL**  
7210 Turfway Road  
Florence, KY 41042

*PRESENTED BY:*

**T.J. SCHUTTE JR**  
Commercial Senior Director  
O: 859.468.6799  
tjschuttejr@kw.com

# 5919 N. JEFFERSON ST

5919 N Jefferson St, Burlington, KY 41005



## PROPERTY DESCRIPTION

Introducing a prime investment opportunity in Northern Kentucky! This 1,024 SF office building, constructed in 1964, is ideally located at 5919 N Jefferson St, Burlington, KY, 41005. Zoned SR-2/SC, this property offers versatile potential for office or office building investors seeking a strategic addition to their portfolio. With its convenient location and a range of potential uses, this property presents an opportunity to shape a valuable investment in a sought-after area. Don't miss the chance to make your mark in the Northern Kentucky market with this promising commercial asset.

## PROPERTY HIGHLIGHTS

- Prime location in Northern Kentucky
- Versatile potential for office or office building use
- Strategic addition to investment portfolio

## OFFERING SUMMARY

Sale Price:	\$239,800
Lot Size:	0.508 Acres
Building Size:	1,024 SF

DEMOGRAPHICS	0.3 MILES	0.5 MILES	1 MILE
Total Households	182	531	2,172
Total Population	569	1,660	6,590
Average HH Income	\$121,821	\$119,440	\$113,695

We obtained the information above from sources we believe to be reliable. However, we have not verified its accuracy and make no guarantee, warranty or representation about it. It is submitted subject to the possibility of errors, omissions, change of price, rental or other conditions, prior sale, lease or financing, or withdrawal without notice. We include projections, opinions, assumptions or estimates for example only, and they may not represent current or future performance of the property. You and your tax and legal advisors should conduct your own investigation of the property and transaction.

**T.J. SCHUTTE JR**  
Commercial Senior Director  
O: 859.468.6799  
tjschuttejr@kw.com

**KW COMMERCIAL**  
7210 Turfway Road  
Florence, KY 41042

## OFFICE FOR SALE

# 5919 N. JEFFERSON ST

5919 N Jefferson St, Burlington, KY 41005



### OFFERING SUMMARY

Sale Price:	\$239,800
Building Size:	1,024 SF
Lot Size:	0.508 Acres
Price / SF:	\$234.18
Year Built:	1964
Zoning:	SR-2/SC
Market:	Northern Kentucky
Submarket:	Burlington

### PROPERTY OVERVIEW

Introducing a prime investment opportunity in Northern Kentucky! This 1,024 SF office building, constructed in 1964, is ideally located at 5919 N Jefferson St, Burlington, KY, 41005. Zoned SR-2/SC, this property offers versatile potential for office or office building investors seeking a strategic addition to their portfolio. With its convenient location and a range of potential uses, this property presents an opportunity to shape a valuable investment in a sought-after area. Don't miss the chance to make your mark in the Northern Kentucky market with this promising commercial asset.

### PROPERTY HIGHLIGHTS

- Prime location in Northern Kentucky
- Versatile potential for office or office building use
- Strategic addition to investment portfolio
- Opportunity for diverse commercial uses

We obtained the information above from sources we believe to be reliable. However, we have not verified its accuracy and make no guarantee, warranty or representation about it. It is submitted subject to the possibility of errors, omissions, change of price, rental or other conditions, prior sale, lease or financing, or withdrawal without notice. We include projections, opinions, assumptions or estimates for example only, and they may not represent current or future performance of the property. You and your tax and legal advisors should conduct your own investigation of the property and transaction.

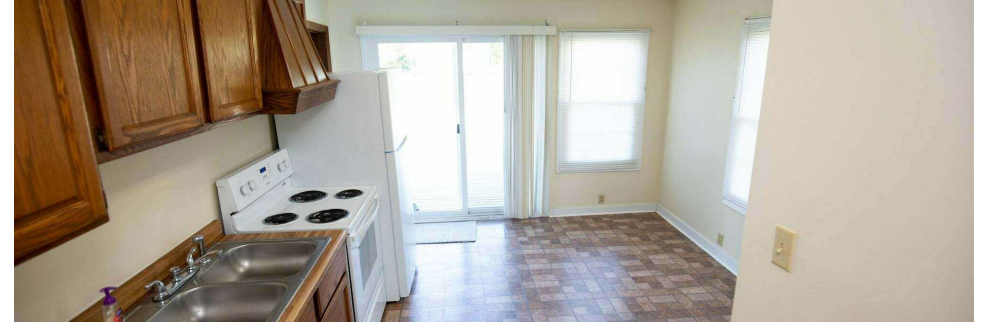
**T.J. SCHUTTE JR**  
Commercial Senior Director  
O: 859.468.6799  
tjschuttejr@kw.com

**KW COMMERCIAL**  
7210 Turfway Road  
Florence, KY 41042

**OFFICE FOR SALE**

# 5919 N. JEFFERSON ST

5919 N Jefferson St, Burlington, KY 41005



We obtained the information above from sources we believe to be reliable. However, we have not verified its accuracy and make no guarantee, warranty or representation about it. It is submitted subject to the possibility of errors, omissions, change of price, rental or other conditions, prior sale, lease or financing, or withdrawal without notice. We include projections, opinions, assumptions or estimates for example only, and they may not represent current or future performance of the property. You and your tax and legal advisors should conduct your own investigation of the property and transaction.

**T.J. SCHUTTE JR**  
Commercial Senior Director  
O: 859.468.6799  
tjschuttejr@kw.com

**KW COMMERCIAL**  
7210 Turfway Road  
Florence, KY 41042

Each Office Independently Owned and Operated [kwcommercialagent.com](http://kwcommercialagent.com)

**OFFICE FOR SALE**

# 5919 N. JEFFERSON ST

5919 N Jefferson St, Burlington, KY 41005



ALL IMAGES, DIMENSIONS, AND OTHER INFORMATION CONTAINED HEREIN ARE APPROXIMATE AND FOR ILLUSTRATIVE PURPOSES ONLY. IT IS NOT TO BE RELIED UPON BY ANY PARTY. NEXT DOOR PHOTOS MAKES NO REPRESENTATIONS OR WARRANTIES, AND DISCLAIMS ANY AND ALL LIABILITY ARISING FROM USE OF THIS INFORMATION. ALL INFORMATION HEREIN SHALL BE SUBJECT TO THE TERMS AND CONDITIONS FOUND AT NEXTDOORPHOTOS.COM/TC.

We obtained the information above from sources we believe to be reliable. However, we have not verified its accuracy and make no guarantee, warranty or representation about it. It is submitted subject to the possibility of errors, omissions, change of price, rental or other conditions, prior sale, lease or financing, or withdrawal without notice. We include projections, opinions, assumptions or estimates for example only, and they may not represent current or future performance of the property. You and your tax and legal advisors should conduct your own investigation of the property and transaction.

**T.J. SCHUTTE JR**  
Commercial Senior Director  
O: 859.468.6799  
tjschuttejr@kw.com

**KW COMMERCIAL**  
7210 Turfway Road  
Florence, KY 41042

Each Office Independently Owned and Operated [kwcommercialagent.com](http://kwcommercialagent.com)

# 5919 N. JEFFERSON ST

5919 N Jefferson St, Burlington, KY 41005

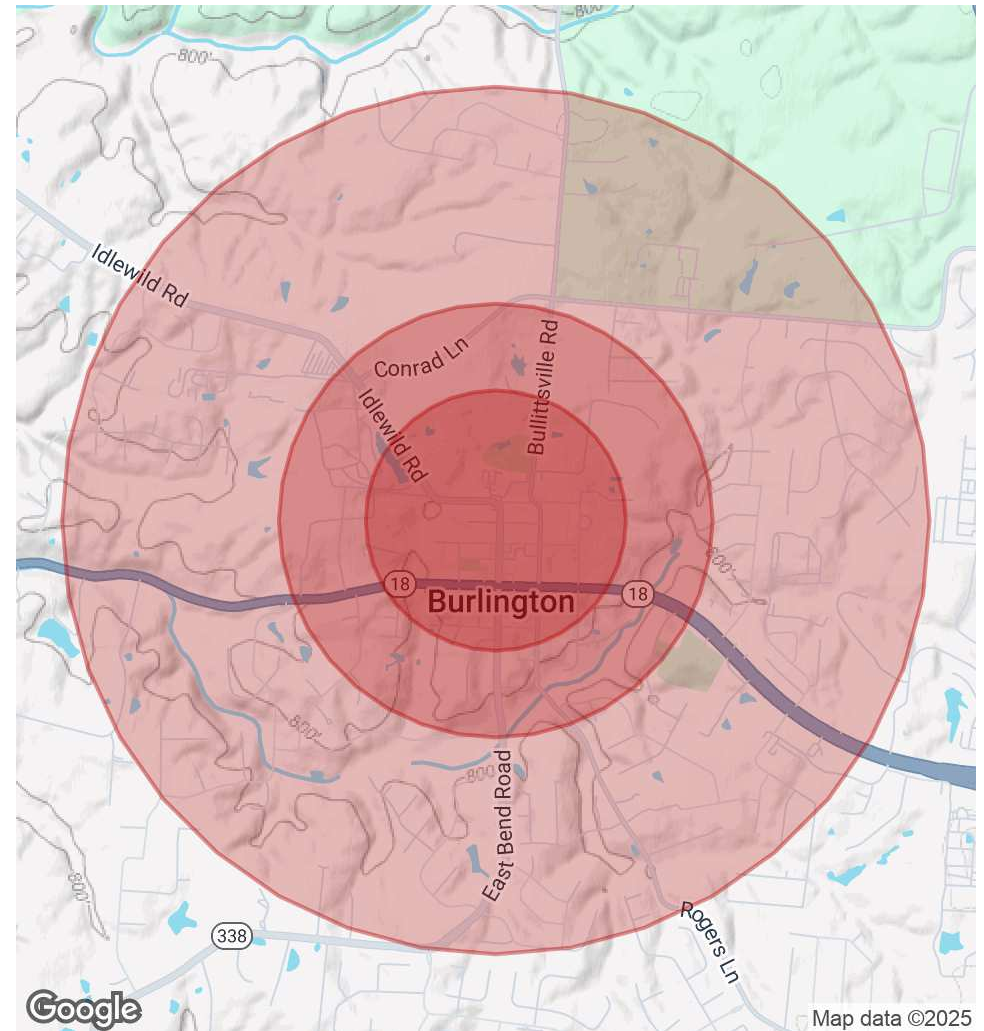


<b>POPULATION</b>	<b>0.3 MILES</b>	<b>0.5 MILES</b>	<b>1 MILE</b>
Total Population	569	1,660	6,590
Average Age	37	37	37
Average Age (Male)	36	36	36
Average Age (Female)	38	38	39

<b>HOUSEHOLDS &amp; INCOME</b>	<b>0.3 MILES</b>	<b>0.5 MILES</b>	<b>1 MILE</b>
Total Households	182	531	2,172
# of Persons per HH	3.1	3.1	3
Average HH Income	\$121,821	\$119,440	\$113,695
Average House Value	\$297,816	\$315,990	\$295,622

*Demographics data derived from AlphaMap*



We obtained the information above from sources we believe to be reliable. However, we have not verified its accuracy and make no guarantee, warranty or representation about it. It is submitted subject to the possibility of errors, omissions, change of price, rental or other conditions, prior sale, lease or financing, or withdrawal without notice. We include projections, opinions, assumptions or estimates for example only, and they may not represent current or future performance of the property. You and your tax and legal advisors should conduct your own investigation of the property and transaction.

**T.J. SCHUTTE JR**  
 Commercial Senior Director  
 O: 859.468.6799  
 tjschuttejr@kw.com

**KW COMMERCIAL**  
 7210 Turfway Road  
 Florence, KY 41042