



OFFICE SUBLEASE

3131 WEBSTER STREET

maven
RETAIL



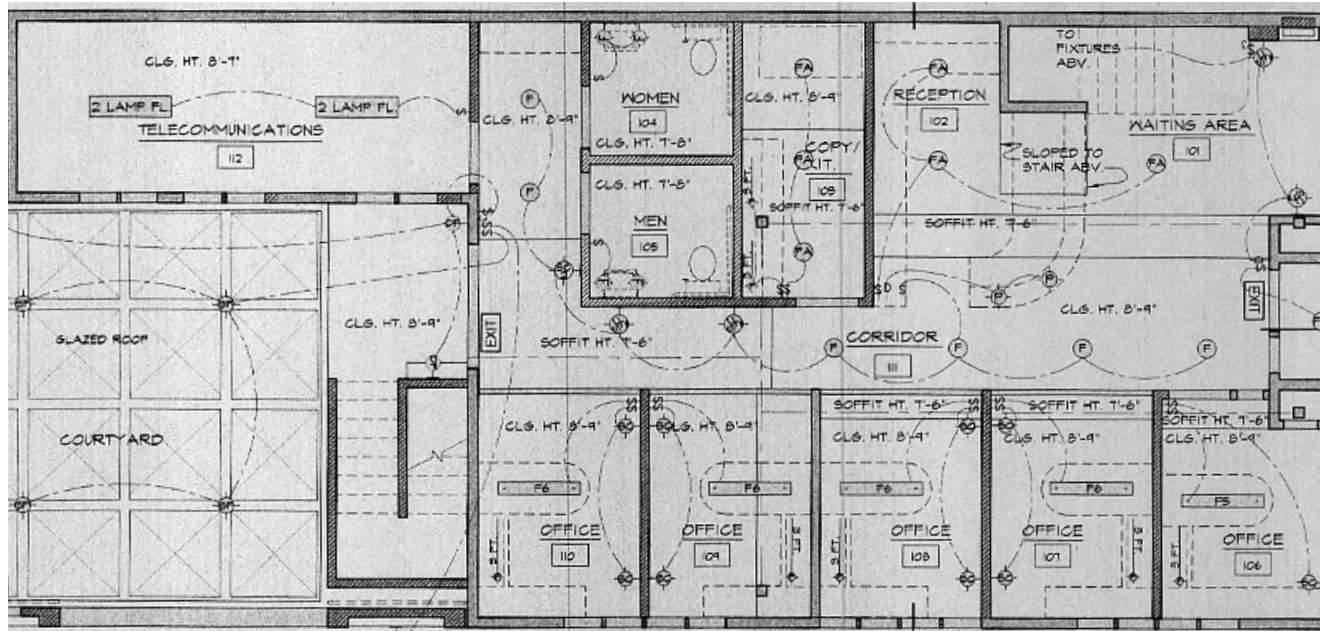
FEATURES

- **+ / - 2,675 SF**
- **Term through 7/31/2026**
- **Credit Sublessor**
- **Full Building Office**
- **Large Windows**
- **Great Signage**
- **Public Parking Behind Building**
- **Former Real Estate Office**

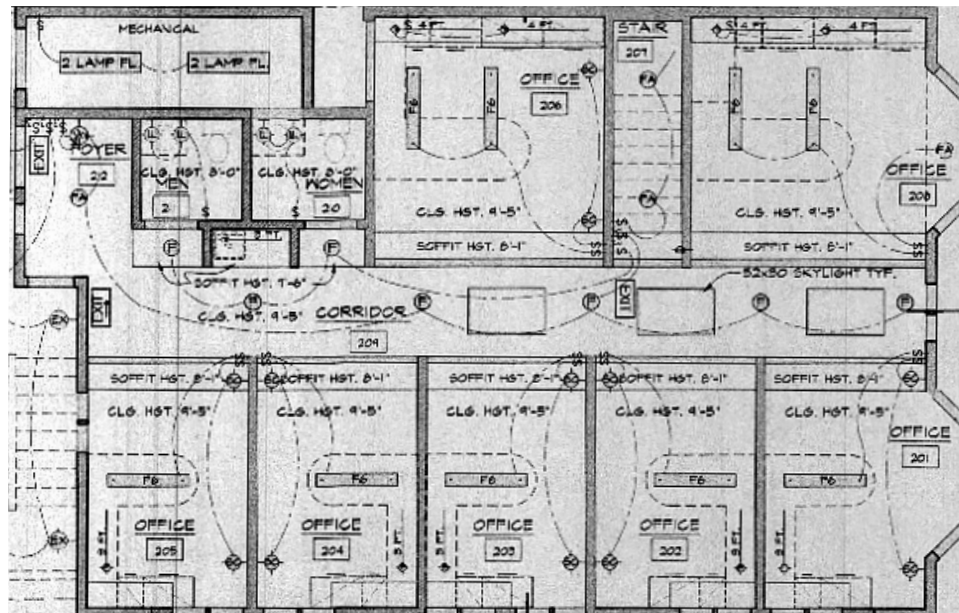


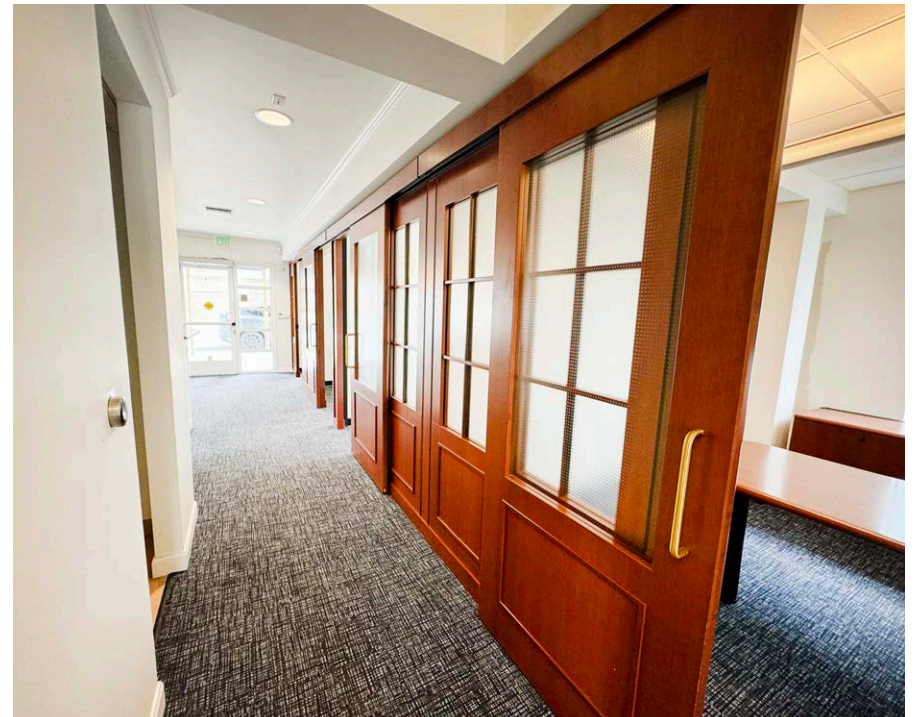
FLOOR PLANS

FIRST FLOOR PLAN



SECOND FLOOR PLAN





NEIGHBORHOOD

BARRIO CHINO SF
ALEGRIAS

SILVER CLOUD RESTAURANT
& KARAOKE BAR

JAKE'S STEAKS

ZUSHI PUZZLE

3131 WEBSTER

LY'S VIETNAMESE CUISINE

ROCKWELL

WILDER

MIXT

LILIKOI

SHAKE SHACK

PALMETTO
SUPERFOODS

THE BRIXTON

SUSHI
HAKKO

JO MALONE
LONDON

PALM HOUSE

WILDSEED

WELLS FARGO

PERRY'S

REDMINT

BONOBOS

BUS STOP

FLORES

LULULEMON

URBAN
REMEDY

THE
BLUE
LIGHT

THE ITALIAN
HOMEMADE
COMPANY

TOTAL
MELTDOWN

KAIYO

TOPDRAWER

ROAM
ARTISAN
BURGERS

AVOTOASTY

Allyne Park
Small
neighborhood
greenspace
with trees

CAMINO ALTO

BLUE FOG MARKET

Walk Score
99

Bike Score
82

Transit Score
76

Bus lines: 28, 45, 49, 91



FLORES



JO MALONE



EQUINOX



PALM HOUSE



WRECKING BALL COFFEE



VUORI



THE ITALIAN HOMEMADE



THE BRIXTON



WILDSEED

COW HOLLOW

3131 Webster is located in the Cow Hollow neighborhood.

Cow Hollow is old-time vernacular for the valley lying west of Van Ness Ave. between Russian Hill and the Presidio. Cow Hollow is one of San Francisco's most well-known and desirable neighborhoods, featuring world-class boutique shopping, a diverse housing market and easy proximity to recreation and work. The neighborhood has found new life as trendy new boutiques, spas, cycle shops, and casual eateries share space with long-time neighborhood fixtures.



Contact

DOMINIC MORBIDELLI

Office 415.404.7314

dom@mavenproperties.com

DRE #02024348

NOTICE: This information has been secured from sources we believe to be reliable but we make no representations, warranties, express or implied, as to the accuracy of the information. Listing broker has been given enough information to provide only a preliminary interest in the property. The materials are not to be considered fact. The information contained herein is not a substitute for thorough due diligence investigation. References to square footage, zoning, use, or age are approximate. Please contact the San Francisco Planning Department to verify zoning at (415) 558-6378, as neither broker or landlord represent that this space is suitable for your use. Tenant or Buyer must verify the information at their own expense and bears all the risk for any inaccuracies. By receiving these materials you are agreeing to the disclaimers set forth herein. DRE#01878802

466 Green Street Suite #203

San Francisco, CA 94133

415-781-770

www.mavenproperties.com