



**BERKSHIRE
HATHAWAY**
HomeServices

Valerie Schumann
Principal Broker
C: 503-812-8423
vschumann@bhhsnw.com

406 Garibaldi Avenue
P.O. Box 475
Garibaldi, OR 97118

BERKSHIRE HATHAWAY Home Services | COMMERCIAL DIVISION | COASTAL/PDX | OregonCoastCommercial.com

7 UNITS IN THE ICONIC NATIONAL BANK BUILDING FOR LEASE



IN THE HEART OF DOWNTOWN | 115 MAIN STREET | TILLAMOOK, OR



NATIONAL BANK BUILDING DOWNTOWN TILLAMOOK

Full-Service Lease | Utilities Included | Newly Renovated

Step into opportunity at the historic National Bank Building, now fully renovated and reimagined for modern retail and office use. Located at the crossroads of Hwy 101, Main Avenue, and Pacific Avenue, this property offers unmatched visibility in the heart of downtown Tillamook.

PROPERTY HIGHLIGHTS

- » **7 Units Available** | Flexible sizes from 500 SF to 1,400 SF
- » **New Vanilla Shell Spaces** – move-in ready and customizable
- » **Storefront exposure** along Main Avenue and Pacific Avenue
- » **Interior units face the newly dedicated Henson Plaza**, a vibrant pedestrian space directly across from popular destinations like Pacific Restaurant and ReCurrent Store

LOCATION ADVANTAGES

- » **Prime downtown walkability** – steps from City Hall, County offices, shops, restaurants, and services
- » Close to grocery, household shopping, and Hoquarton waterfront
- » **Convenient parking options** – on-street spaces, city surface lots, and nearby WAVE Bus Line stops

COMMUNITY & GROWTH

Tillamook's downtown is part of the Oregon Main Street Program, ensuring ongoing investment, beautification, and community-driven events. The active Chamber of Commerce supports local businesses with advocacy and year-round programming, **making downtown a hub for both residents and visitors.**

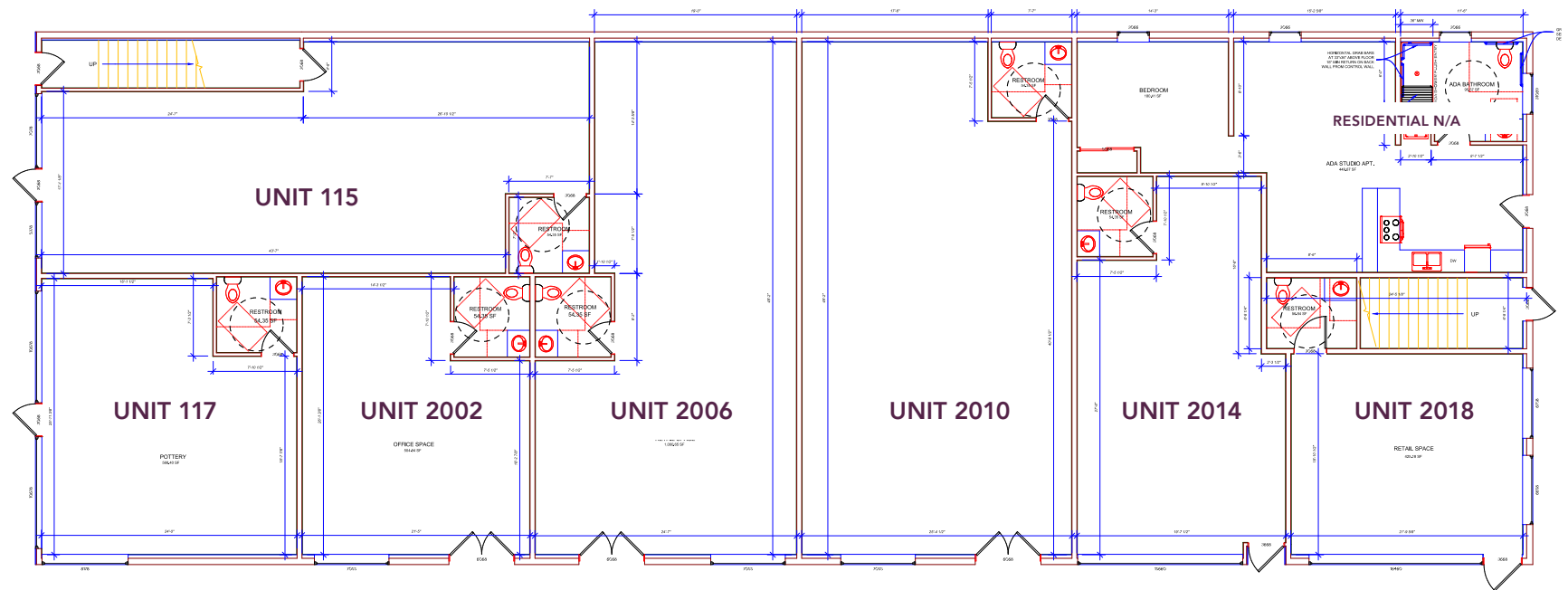


SCAN THE QR CODE TO VISIT THE TILLAMOOK CHAMBER WEBSITE.

This is more than a lease—it's a chance to place your business at the center of a growing, dynamic, and walkable community district.

NATIONAL BANK BUILDING | DOWNTOWN TILLAMOOK

FULL-SERVICE LEASE | UTILITIES INCLUDED | NEWLY RENOVATED



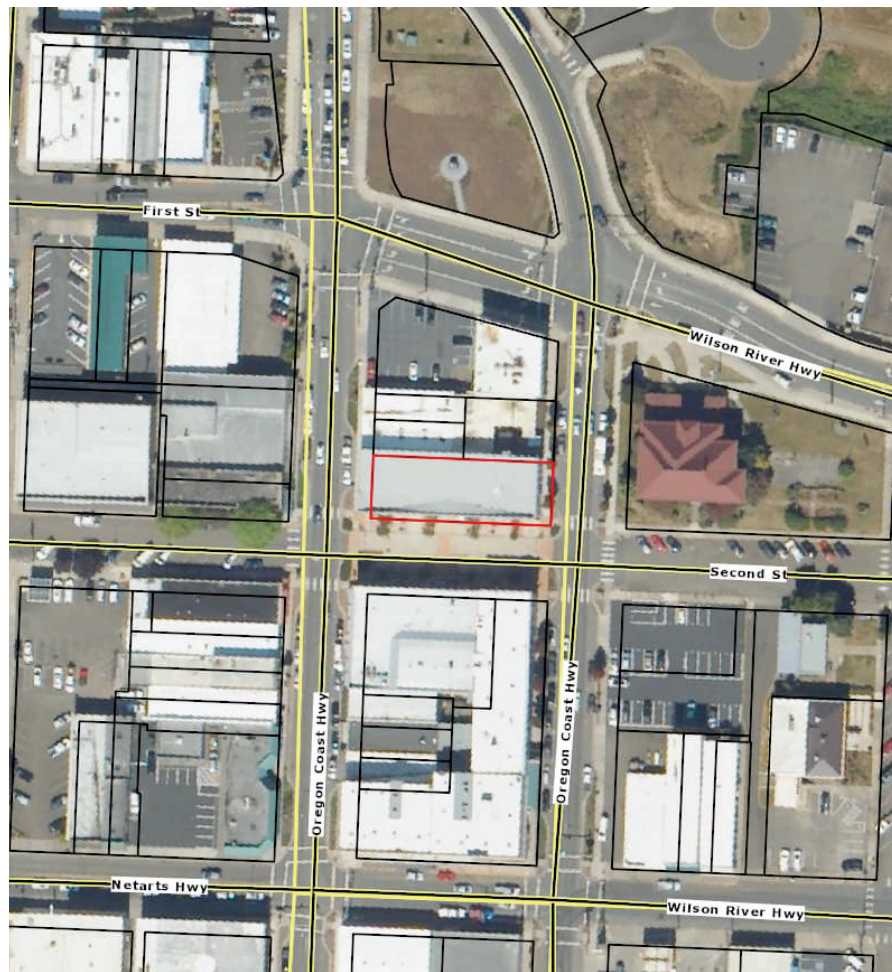
AVAILABLE UNITS

»	115	\$2,200	980 Sq. Ft.
»	117	\$1,400	560 Sq. Ft.
»	2002	\$1,500	560 Sq. Ft.
»	2006	\$1,755	1,050 Sq. Ft.
»	2010	\$1,800	1,150 Sq. Ft.
»	2014	\$1,625	650 Sq. Ft.
»	2018	\$1,500	500 Sq. Ft.



NATIONAL BANK BUILDING | DOWNTOWN TILLAMOOK

IN THE HEART OF DOWNTOWN | 115 MAIN STREET | TILLAMOOK, OR



AERIAL MAP



PARCEL MAP