

BOUQUET-SECO PLAZA

26781 BOUQUET CANYON ROAD & 26811-B SECO CANYON ROAD, SANTA CLARITA, CA 91350

NAI Capital
COMMERCIAL REAL ESTATE SERVICES, WORLDWIDE



Property Summary:

- 2-Story Retail / Office Center
- Year Built: 1971
- Zoning: Community Commercial (CC)

Available:

- **Unit 26781:** 3,913 SF – Ground Floor, Fully Buildout Medical Suite
- **Unit 26811-B:** 716 SF – 2nd Floor, No Elevator

Property Highlights:

- Busy Signalized Intersection of Bouquet Canyon and Seco Canyon
- Idea for Retail, Office and Medical
- Heavy Residential in the area Providing Strong Traffic to the Center
- Traffic Counts: 52,000 CPD

For More Information:

John Z. Cserkuti
Executive Vice President
661.705.3551 | jcserkuti@naicapital.com
Cal DRE Lic. #01267987

Thomas Oliver
Vice President
661.705.3565 | toliver@naicapital.com
Cal DRE Lic. #01466098

©NAI Capital Commercial, Inc. Content in this document may include AI generated or alerted text, images and/or analysis. No warranty, express or implied, is made as to the accuracy of the information contained herein. This information is submitted subject to errors, omissions, change of price, rental or other conditions, withdrawal without notice, and is subject to any special listing conditions imposed by our principals. Cooperating brokers, buyers, tenants and other parties who receive this document should not rely on it, but should use it as a starting point of analysis, and should independently confirm the accuracy of the information contained herein through a due diligence review of the books, records, files and documents that constitute reliable sources of the information described herein. Unedited images viewable at naicapital.com | Cal DRE Lic #02130474

BOUQUET-SECO PLAZA

26781 BOUQUET CANYON ROAD & 26811-B SECO CANYON ROAD, SANTA CLARITA, CA 91350

UNIT	TENANT	AREA
BOUQUET CANYON		
26769	Bouquet Auto Parts	3,600
26771	Paper Heros	1,238
26773	Rita's Italian Ice	1,367
26775	RM Taxes	1,141
26781	AVAILABLE	3,913

SECO CANYON		
26803	Spudnuts	1,125
26805-9	Patron's Mexican	3,831
26881-A	SJ Beauty Salon	808
26811-B	AVAILABLE	716
26811-D	Vienna Hospice	945
26811-C	Vesso Inc	976
26811-E/F	Magic Touch Massage	1,347
26815	Seven Eleven	2,497



For More Information:

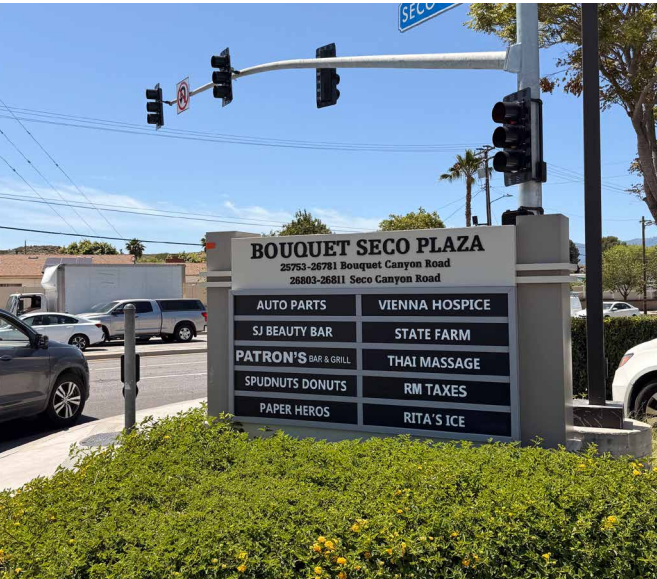
John Z. Cserkuti
Executive Vice President
661.705.3551 | jcserkuti@naicapital.com
Cal DRE Lic. #01267987

Thomas Oliver
Vice President
661.705.3565 | tolover@naicapital.com
Cal DRE Lic. #01466098

BOUQUET-SECO PLAZA

26781 BOUQUET CANYON ROAD & 26811-B SECO CANYON ROAD, SANTA CLARITA, CA 91350

NAI Capital
COMMERCIAL REAL ESTATE SERVICES, WORLDWIDE



For More Information:

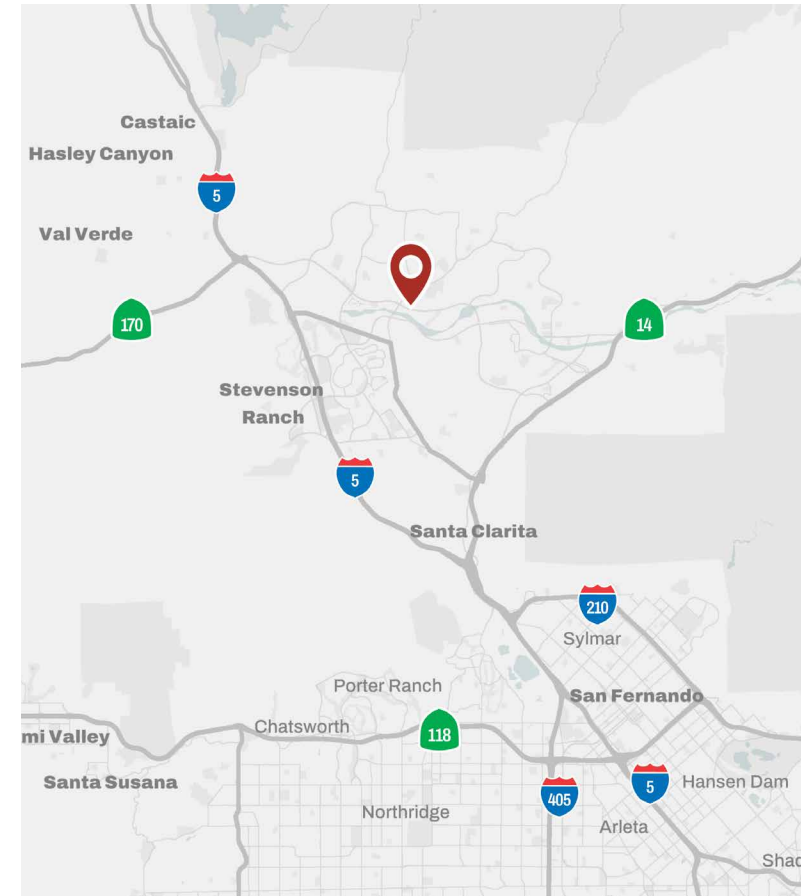
John Z. Cserkuti
Executive Vice President
661.705.3551 | jcserkuti@naicapital.com
Cal DRE Lic. #01267987

Thomas Oliver
Vice President
661.705.3565 | toliver@naicapital.com
Cal DRE Lic. #01466098

©NAI Capital Commercial, Inc. Content in this document may include AI generated or alerted text, images and/or analysis. No warranty, express or implied, is made as to the accuracy of the information contained herein. This information is submitted subject to errors, omissions, change of price, rental or other conditions, withdrawal without notice, and is subject to any special listing conditions imposed by our principals. Cooperating brokers, buyers, tenants and other parties who receive this document should not rely on it, but should use it as a starting point of analysis, and should independently confirm the accuracy of the information contained herein through a due diligence review of the books, records, files and documents that constitute reliable sources of the information described herein. Unedited images viewable at naicapital.com | Cal DRE Lic #02130474

BOUQUET-SECO PLAZA

26781 BOUQUET CANYON ROAD & 26811-B SECO CANYON ROAD, SANTA CLARITA, CA 91350



Population:	1 Mile	3 Miles	5 Miles
Estimated Population (2025)	13,100	107,961	219,476
Projected Population (2030)	12,433	102,338	211,263

Daytime Demographics	1 Mile	3 Miles	5 Miles
Total Businesses	498	5,803	10,238
Total Employees	3,028	51,165	83,141

Ave. HH Income	1 Mile	3 Miles	5 Miles
Estimated Average Household Income (2025)	\$170,307	\$174,073	\$165,157
Projected Average Household Income (2030)	\$171,347	\$174,965	\$165,919

For More Information:

John Z. Cserkuti
Executive Vice President
661.705.3551 | jcserkuti@naicapital.com
Cal DRE Lic. #01267987

Thomas Oliver
Vice President
661.705.3565 | tolover@naicapital.com
Cal DRE Lic. #01466098

©NAI Capital Commercial, Inc. Content in this document may include AI generated or alerted text, images and/or analysis. No warranty, express or implied, is made as to the accuracy of the information contained herein. This information is submitted subject to errors, omissions, change of price, rental or other conditions, withdrawal without notice, and is subject to any special listing conditions imposed by our principals. Cooperating brokers, buyers, tenants and other parties who receive this document should not rely on it, but should use it as a starting point of analysis, and should independently confirm the accuracy of the information contained herein through a due diligence review of the books, records, files and documents that constitute reliable sources of the information described herein. Unedited images viewable at naicapital.com | Cal DRE Lic #02130474