

**FOR SALE**



**7006 Spencer Hwy**

Pasadena, TX 77505

Annie Wu

**832.239.7878**

[annie@horizonrealtypartner.com](mailto:annie@horizonrealtypartner.com)  
[www.expcommercial.com](http://www.expcommercial.com)

TX #817601

# Property Information





# Offering Summary

FOR SALE



## PROPERTY OVERVIEW

Exceptional owner-user or investment opportunity located in the heart of Pasadena’s thriving commercial corridor. This property offers a dual-use configuration with a fully built-out, turnkey dental office on one side and a restaurant-ready space on the other.

**Dental Office:** Designed for immediate occupancy, featuring 6 operatories, with 4 operatories fully equipped with modern dental chairs and equipment. Perfect for a growing practice or multi-specialty use.

**Restaurant Side:** Spacious layout suitable for a variety of food service concepts, with built-in infrastructure for easy start-up.

**Prime Location:** Located on Spencer Hwy, with easy access to Beltway 8 and Highway 225, the site offers exceptional visibility, strong traffic counts, and is surrounded by residential neighborhoods, shopping centers, and medical facilities—ensuring consistent foot traffic and long-term viability.

## OFFERING SUMMARY

Sale Price:	Upon Request
Building Size:	4,982 SF

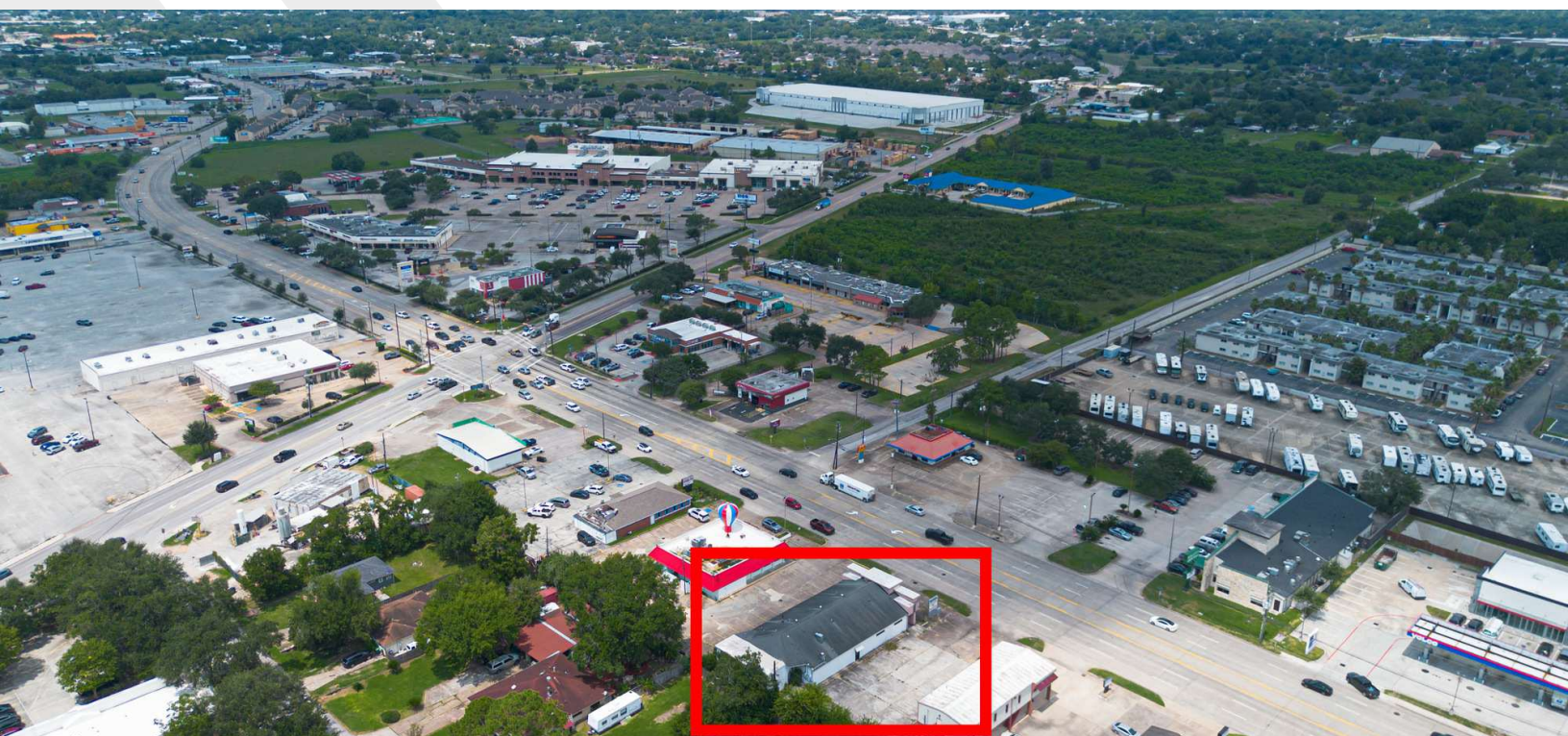
Annie Wu  
832.239.7878  
annie@horizonrealtypartner.com  
TX #817601



eXp Commercial, LLC, its direct and indirect parents and their subsidiaries (together, "We") obtained the information above from sources believed to be reliable, however, We have not verified its accuracy and make no guarantee, warranty or representation, expressed or implied, about such information. The information contained above is submitted subject to the possibility of errors, omissions, price changes, rental or other conditions, prior sale, lease or financing, or withdrawal without notice. Any projections, opinions, assumptions or estimates of the information contained above or provided in connection therewith, either expressed or implied, are for example only, and they may not represent current or future performance of the subject property. You, together with your tax and legal advisors, should conduct your own thorough investigation of the subject property and potential investment.



FOR SALE



Annie Wu

832.239.7878

annie@horizonrealtypartner.com

TX #817601



eXp Commercial, LLC, its direct and indirect parents and their subsidiaries (together, "We") obtained the information above from sources believed to be reliable, however, We have not verified its accuracy and make no guarantee, warranty or representation, expressed or implied, about such information. The information contained above is submitted subject to the possibility of errors, omissions, price changes, rental or other conditions, prior sale, lease or financing, or withdrawal without notice. Any projections, opinions, assumptions or estimates of the information contained above or provided in connection therewith, either expressed or implied, are for example only, and they may not represent current or future performance of the subject property. You, together with your tax and legal advisors, should conduct your own thorough investigation of the subject property and potential investment.

# Additional Photos

FOR SALE



Annie Wu

832.239.7878

annie@horizonrealtypartner.com

TX #817601

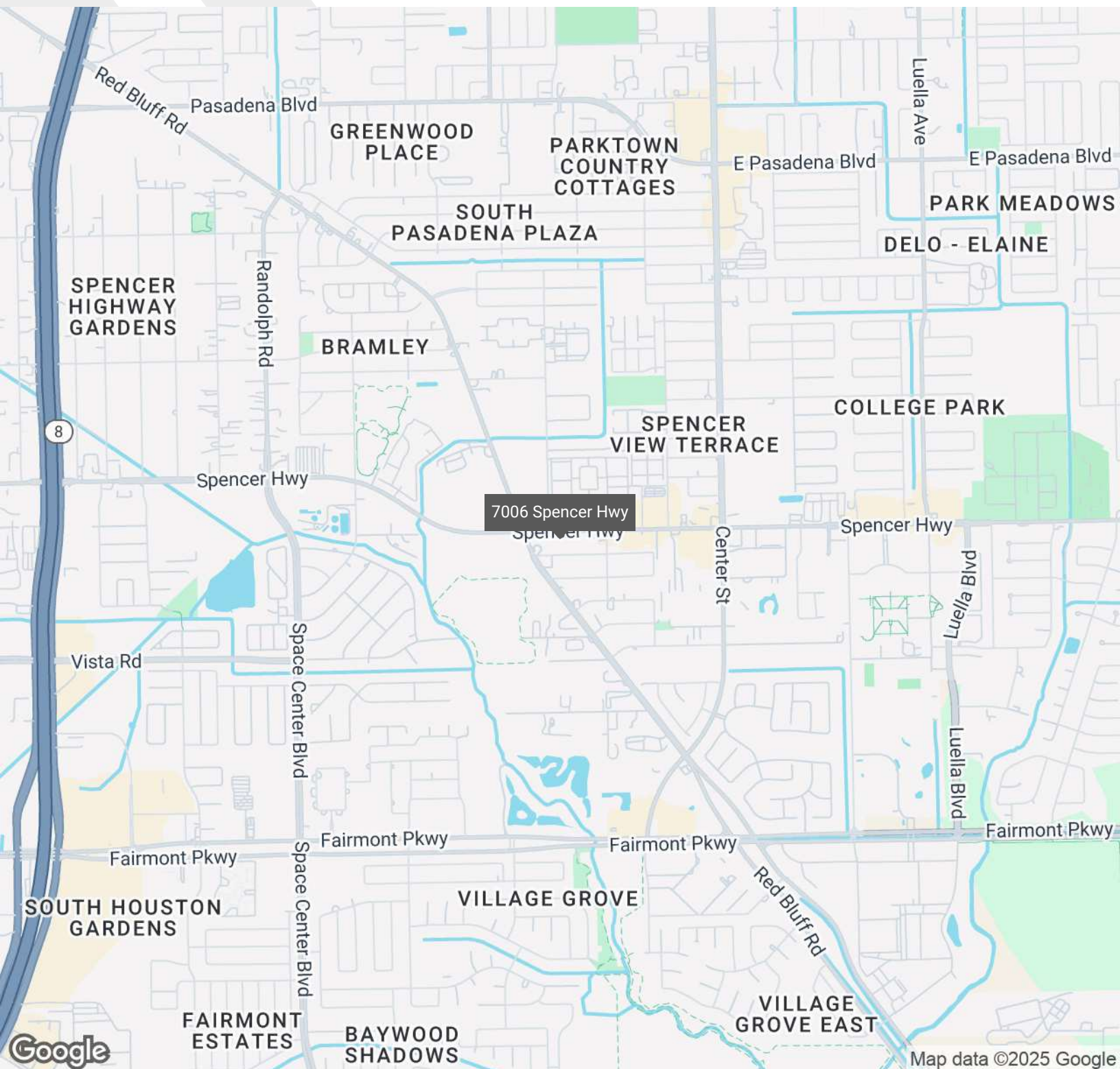


eXp Commercial, LLC, its direct and indirect parents and their subsidiaries (together, "We") obtained the information above from sources believed to be reliable, however, We have not verified its accuracy and make no guarantee, warranty or representation, expressed or implied, about such information. The information contained above is submitted subject to the possibility of errors, omissions, price changes, rental or other conditions, prior sale, lease or financing, or withdrawal without notice. Any projections, opinions, assumptions or estimates of the information contained above or provided in connection therewith, either expressed or implied, are for example only, and they may not represent current or future performance of the subject property. You, together with your tax and legal advisors, should conduct your own thorough investigation of the subject property and potential investment.



# Regional Map

FOR SALE



Annie Wu

832.239.7878

annie@horizonrealtypartner.com

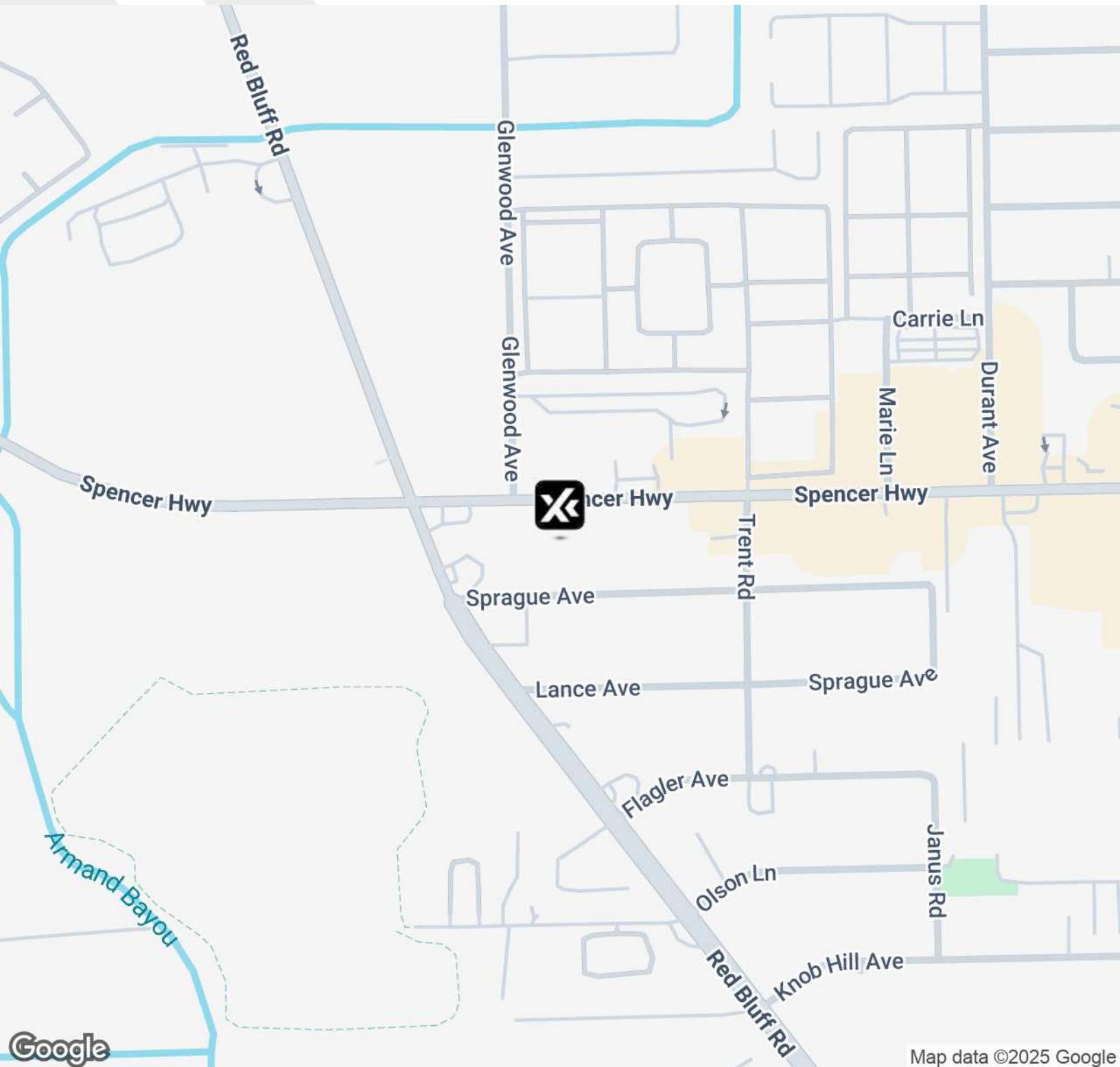
TX #817601



eXp Commercial, LLC, its direct and indirect parents and their subsidiaries (together, "We") obtained the information above from sources believed to be reliable, however, We have not verified its accuracy and make no guarantee, warranty or representation, expressed or implied, about such information. The information contained above is submitted subject to the possibility of errors, omissions, price changes, rental or other conditions, prior sale, lease or financing, or withdrawal without notice. Any projections, opinions, assumptions or estimates of the information contained above or provided in connection therewith, either expressed or implied, are for example only, and they may not represent current or future performance of the subject property. You, together with your tax and legal advisors, should conduct your own thorough investigation of the subject property and potential investment.

# Location Map

FOR SALE



Annie Wu

832.239.7878

annie@horizonrealtypartner.com

TX #817601

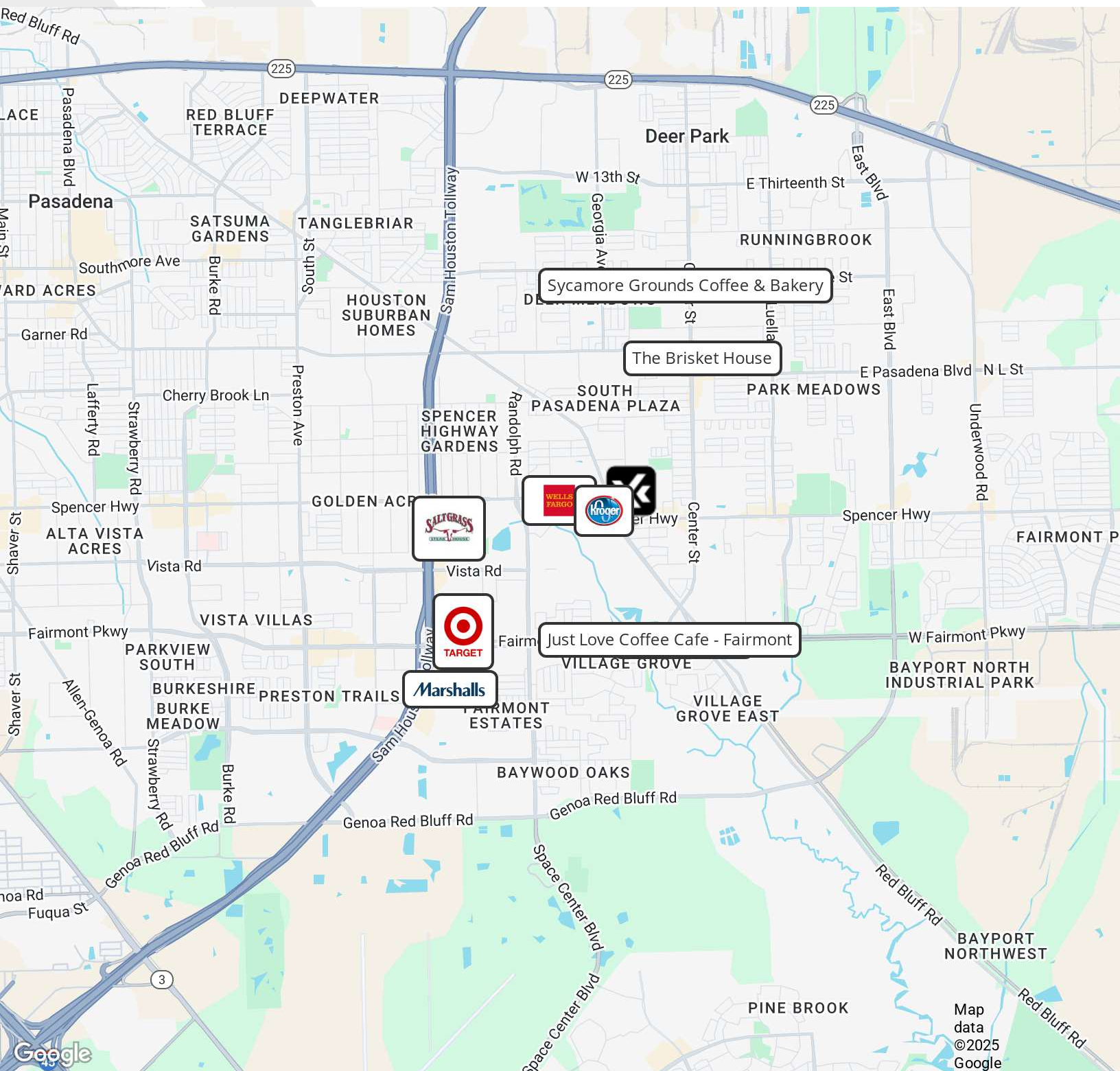


eXp Commercial, LLC, its direct and indirect parents and their subsidiaries (together, "We") obtained the information above from sources believed to be reliable, however, We have not verified its accuracy and make no guarantee, warranty or representation, expressed or implied, about such information. The information contained above is submitted subject to the possibility of errors, omissions, price changes, rental or other conditions, prior sale, lease or financing, or withdrawal without notice. Any projections, opinions, assumptions or estimates of the information contained above or provided in connection therewith, either expressed or implied, are for example only, and they may not represent current or future performance of the subject property. You, together with your tax and legal advisors, should conduct your own thorough investigation of the subject property and potential investment.



# Retailer Map

FOR SALE



Annie Wu

832.239.7878

annie@horizonrealtypartner.com

TX #817601

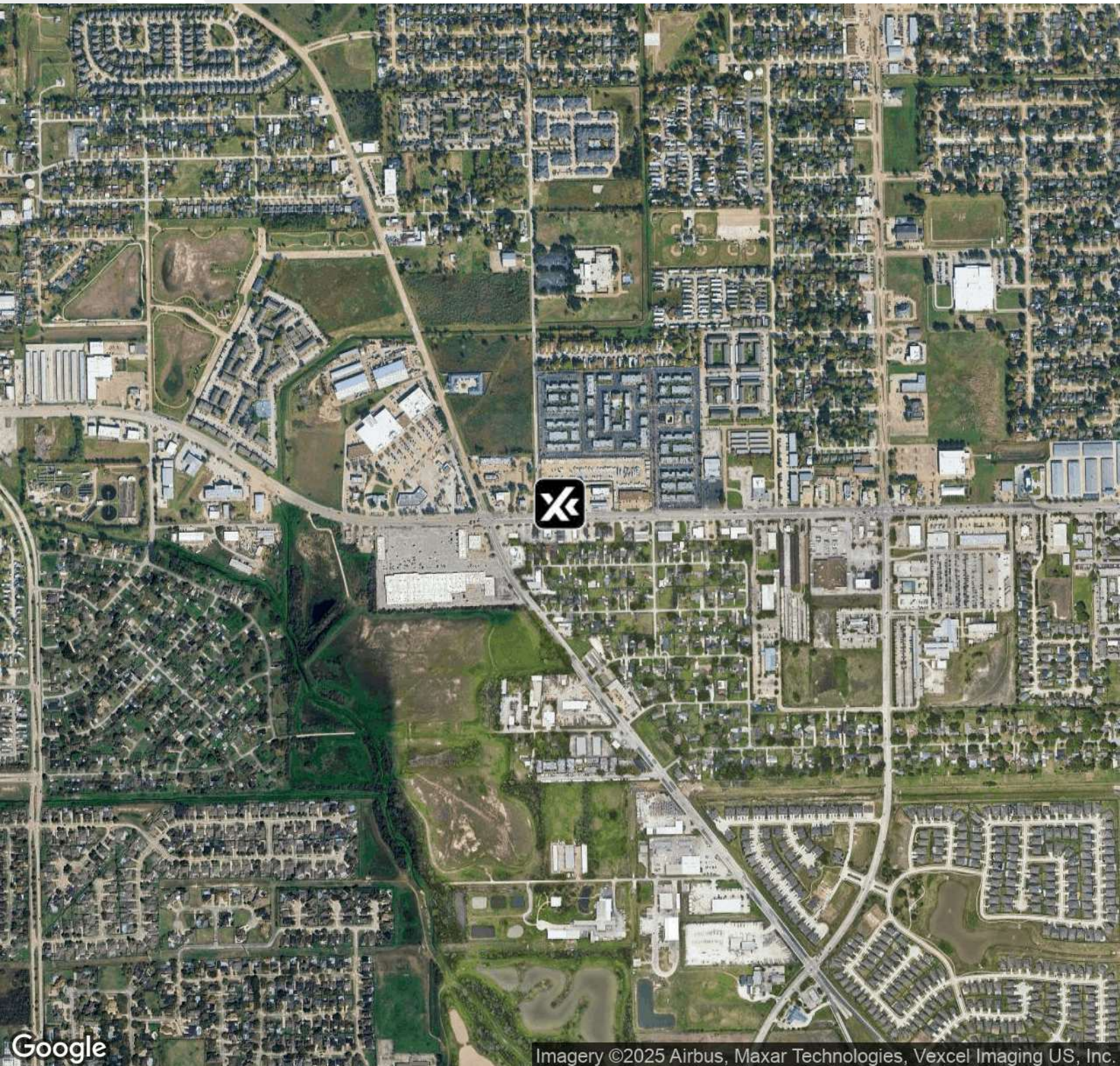


eXp Commercial, LLC, its direct and indirect parents and their subsidiaries (together, "We") obtained the information above from sources believed to be reliable, however, We have not verified its accuracy and make no guarantee, warranty or representation, expressed or implied, about such information. The information contained above is submitted subject to the possibility of errors, omissions, price changes, rental or other conditions, prior sale, lease or financing, or withdrawal without notice. Any projections, opinions, assumptions or estimates of the information contained above or provided in connection therewith, either expressed or implied, are for example only, and they may not represent current or future performance of the subject property. You, together with your tax and legal advisors, should conduct your own thorough investigation of the subject property and potential investment.



# Aerial Map

FOR SALE



Annie Wu

832.239.7878

[annie@horizonrealtypartner.com](mailto:annie@horizonrealtypartner.com)

TX #817601

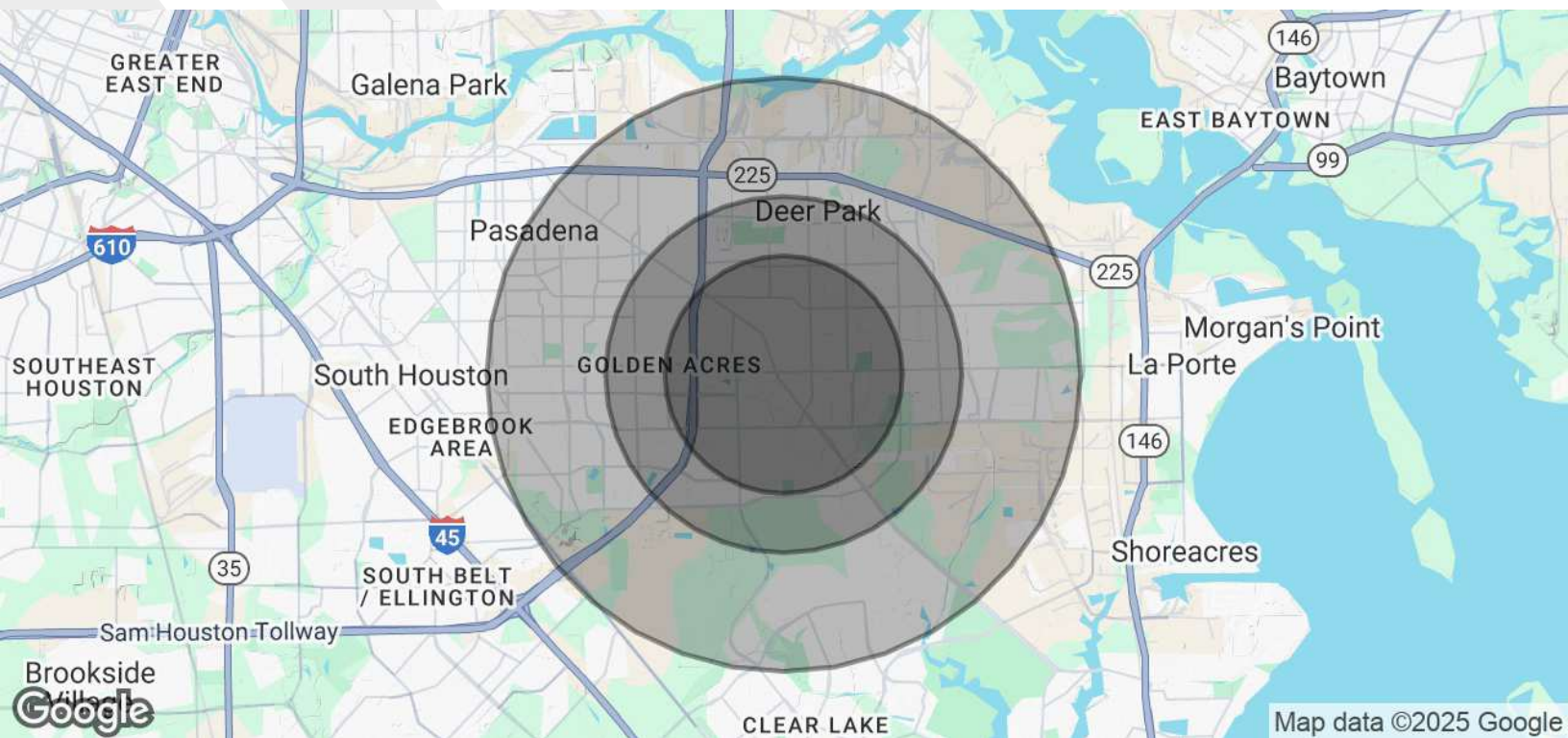


eXp Commercial, LLC, its direct and indirect parents and their subsidiaries (together, "We") obtained the information above from sources believed to be reliable, however, We have not verified its accuracy and make no guarantee, warranty or representation, expressed or implied, about such information. The information contained above is submitted subject to the possibility of errors, omissions, price changes, rental or other conditions, prior sale, lease or financing, or withdrawal without notice. Any projections, opinions, assumptions or estimates of the information contained above or provided in connection therewith, either expressed or implied, are for example only, and they may not represent current or future performance of the subject property. You, together with your tax and legal advisors, should conduct your own thorough investigation of the subject property and potential investment.



# Demographics Map & Report

FOR SALE



POPULATION	2 MILES	3 MILES	5 MILES
Total Population	46,063	91,169	194,297
Average Age	39	39	38
Average Age (Male)	38	38	37
Average Age (Female)	40	40	39

HOUSEHOLDS & INCOME	2 MILES	3 MILES	5 MILES
Total Households	16,442	32,523	66,697
# of Persons per HH	2.8	2.8	2.9
Average HH Income	\$105,627	\$103,999	\$98,762
Average House Value	\$262,471	\$261,541	\$249,666

RACE	2 MILES	3 MILES	5 MILES
% White	58.0%	55.3%	47.8%
% Black	3.8%	4.0%	4.2%
% Asian	2.2%	2.3%	3.0%

Annie Wu

832.239.7878

annie@horizonrealtypartner.com

TX #817601

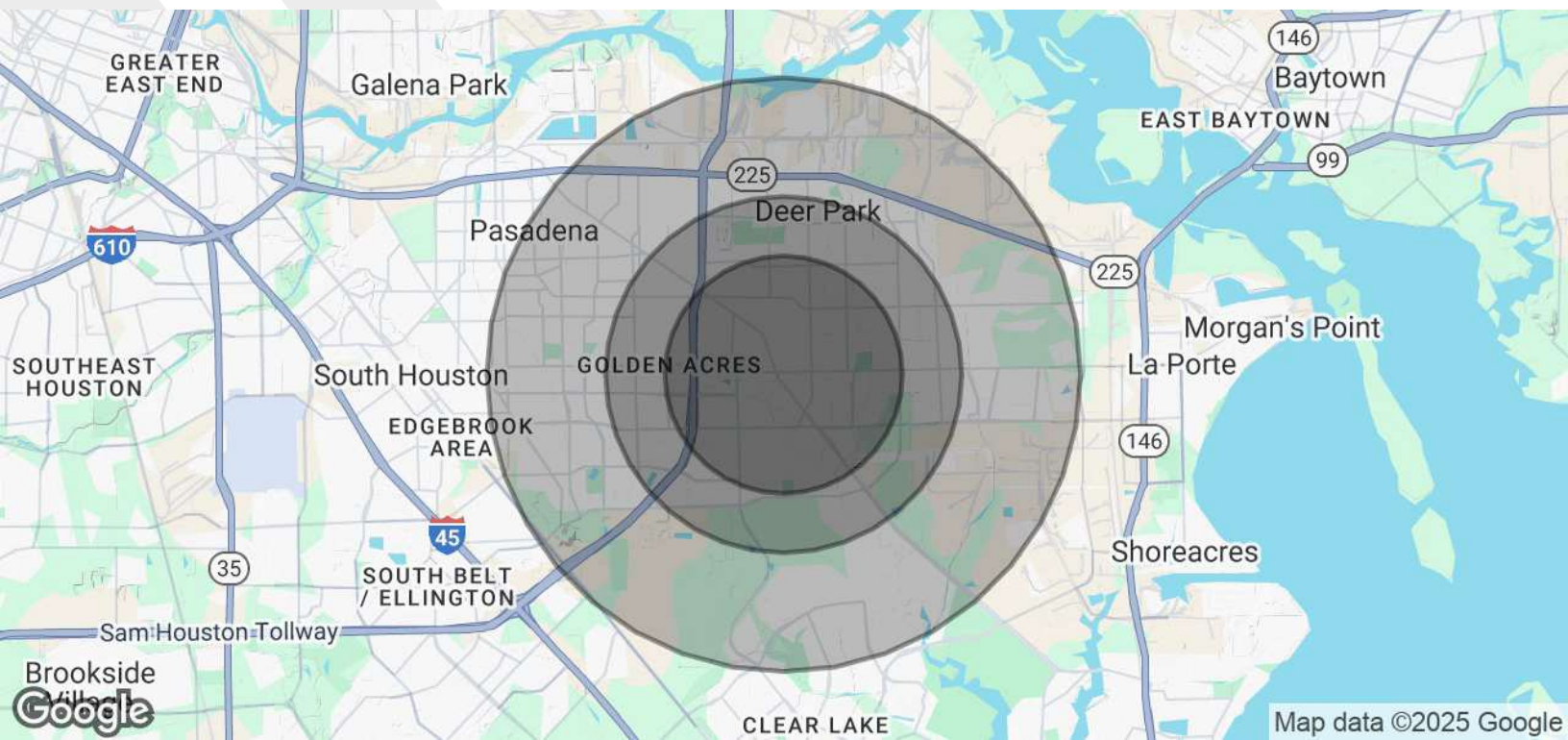


eXp Commercial, LLC, its direct and indirect parents and their subsidiaries (together, "We") obtained the information above from sources believed to be reliable, however, We have not verified its accuracy and make no guarantee, warranty or representation, expressed or implied, about such information. The information contained above is submitted subject to the possibility of errors, omissions, price changes, rental or other conditions, prior sale, lease or financing, or withdrawal without notice. Any projections, opinions, assumptions or estimates of the information contained above or provided in connection therewith, either expressed or implied, are for example only, and they may not represent current or future performance of the subject property. You, together with your tax and legal advisors, should conduct your own thorough investigation of the subject property and potential investment.



# Demographics Map & Report

FOR SALE



% Hawaiian	0.1%	0.1%	0.1%
% American Indian	1.0%	0.9%	1.1%
% Other	14.4%	16.2%	20.7%

## TRAFFIC COUNTS

34,448	/day
--------	------

Demographics data derived from AlphaMap

Annie Wu  
832.239.7878  
annie@horizonrealtypartner.com  
TX #817601



eXp Commercial, LLC, its direct and indirect parents and their subsidiaries (together, "We") obtained the information above from sources believed to be reliable, however, We have not verified its accuracy and make no guarantee, warranty or representation, expressed or implied, about such information. The information contained above is submitted subject to the possibility of errors, omissions, price changes, rental or other conditions, prior sale, lease or financing, or withdrawal without notice. Any projections, opinions, assumptions or estimates of the information contained above or provided in connection therewith, either expressed or implied, are for example only, and they may not represent current or future performance of the subject property. You, together with your tax and legal advisors, should conduct your own thorough investigation of the subject property and potential investment.



# Information About Brokerage Services

*Texas law requires all real estate license holders to give the following information about brokerage services to prospective buyers, tenants, sellers and landlords.*

2-10-2025



## TYPES OF REAL ESTATE LICENSE HOLDERS:

- **A BROKER** is responsible for all brokerage activities, including acts performed by sales agents sponsored by the broker.
- **A SALES AGENT** must be sponsored by a broker and works with clients on behalf of the broker.

## A BROKER'S MINIMUM DUTIES REQUIRED BY LAW (A client is the person or party that the broker represents):

- Put the interests of the client above all others, including the broker's own interests;
- Inform the client of any material information about the property or transaction received by the broker;
- Answer the client's questions and present any offer to or counter-offer from the client; and
- Treat all parties to a real estate transaction honestly and fairly.

## A LICENSE HOLDER CAN REPRESENT A PARTY IN A REAL ESTATE TRANSACTION:

**AS AGENT FOR OWNER (SELLER/LANDLORD):** The broker becomes the property owner's agent through an agreement with the owner, usually in a written listing to sell or property management agreement. An owner's agent must perform the broker's minimum duties above and must inform the owner of any material information about the property or transaction known by the agent, including information disclosed to the agent or subagent by the buyer or buyer's agent. **An owner's agent fees are not set by law and are fully negotiable.**

**AS AGENT FOR BUYER/TENANT:** The broker becomes the buyer/tenant's agent by agreeing to represent the buyer, usually through a written representation agreement. A buyer's agent must perform the broker's minimum duties above and must inform the buyer of any material information about the property or transaction known by the agent, including information disclosed to the agent by the seller or seller's agent. **A buyer/tenant's agent fees are not set by law and are fully negotiable.**

**AS AGENT FOR BOTH - INTERMEDIARY:** To act as an intermediary between the parties the broker must first obtain the written agreement of *each party* to the transaction. The written agreement must state who will pay the broker and, in conspicuous bold or underlined print, set forth the broker's obligations as an intermediary. A broker who acts as an intermediary:

- Must treat all parties to the transaction impartially and fairly;
- May, with the parties' written consent, appoint a different license holder associated with the broker to each party (owner and buyer) to communicate with, provide opinions and advice to, and carry out the instructions of each party to the transaction.
- Must not, unless specifically authorized in writing to do so by the party, disclose:
  - that the owner will accept a price less than the written asking price;
  - that the buyer/tenant will pay a price greater than the price submitted in a written offer; and
  - any confidential information or any other information that a party specifically instructs the broker in writing not to disclose, unless required to do so by law.

**AS SUBAGENT:** A license holder acts as a subagent when aiding a buyer in a transaction without an agreement to represent the buyer. A subagent can assist the buyer but does not represent the buyer and must place the interests of the owner first.

## TO AVOID DISPUTES, ALL AGREEMENTS BETWEEN YOU AND A BROKER SHOULD BE IN WRITING AND CLEARLY ESTABLISH:

- The broker's duties and responsibilities to you, and your obligations under the representation agreement.
- Who will pay the broker for services provided to you, when payment will be made and how the payment will be calculated.

**LICENSE HOLDER CONTACT INFORMATION:** This notice is being provided for information purposes. It does not create an obligation for you to use the broker's services. Please acknowledge receipt of this notice below and retain a copy for your records.

<b>eXp Commercial</b>	<b>9010212</b>	<b>tx.broker@expcommercial.com</b>	<b>214-704-9862</b>
Licensed Broker /Broker Firm Name or Primary Assumed Business Name	License No.	Email	Phone
<b>Clifford J. Bogart</b>	<b>313043</b>	<b>clifford.bogart@expcommercial.com</b>	<b>214-704-9862</b>
Designated Broker of Firm	License No.	Email	Phone
<b>Clifford J. Bogart</b>	<b>313043</b>	<b>clifford.bogart@expcommercial.com</b>	<b>214-704-9862</b>
Licensed Supervisor of Sales Agent/ Associate	License No.	Email	Phone
<b>Annie Wu</b>	<b>817601</b>	<b>annie@horizonrealtypartner.com</b>	<b>832.239.7878</b>
Sales Agent/Associate's Name	License No.	Email	Phone

\_\_\_\_\_  
Buyer/Tenant/Seller/Landlord Initials

\_\_\_\_\_  
Date