

PRINCETON GROUND FLOOR FOR LEASE

211-213 NASSAU STREET, PRINCETON NJ



PRINCETON GROUNDFLOOR FOR LEASE

211-213 NASSAU STREET, PRINCETON NJ



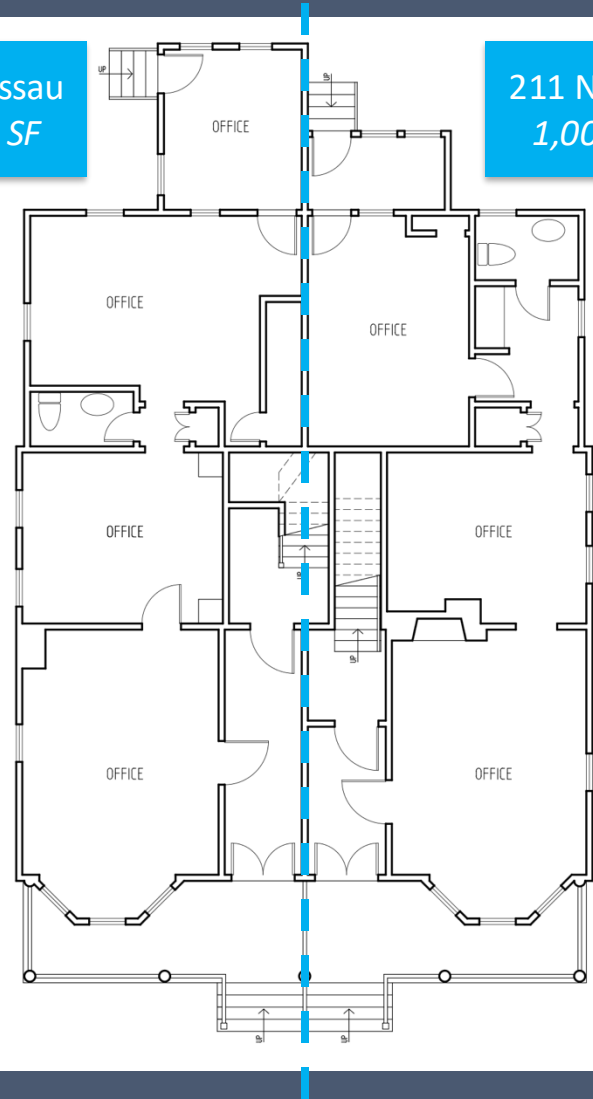
211-213 Nassau Street is a prestigious retail/office/medical building located in the center of downtown Princeton. The entire groundfloor is now available for lease. The groundfloor totals 2,100 SF comprised of 211 Nassau (1,000 SF) and 213 Nassau (1,100 SF). 211 and 213 Nassau each come with signage, and they may be rented separately or combined to create a high-profile flagship location.

PRINCETON GROUNDFLOOR FOR LEASE

211-213 NASSAU STREET, PRINCETON NJ

213 Nassau
1,100 SF

211 Nassau
1,000 SF



Parking Available at
Building Rear



PRINCETON GROUND FLOOR FOR LEASE

211-213 NASSAU STREET, PRINCETON NJ

211 Nassau
1,000 SF



PRINCETON GROUND FLOOR FOR LEASE

211-213 NASSAU STREET, PRINCETON NJ

213 Nassau
1,100 SF



PRINCETON GROUNDFLOOR FOR LEASE

211-213 NASSAU STREET, PRINCETON NJ



PRINCETON GROUNDFLOOR FOR LEASE

211-213 NASSAU STREET, PRINCETON NJ

CONTACT
TRACY BRANNIGAN
(609) 377-7839

