

FOR LEASE | RANKIN BUSINESS PARK

1220-1270 RANKIN STREET



1220-1270 RANKIN STREET
TROY, MI 48083

PROPERTY HIGHLIGHTS:

- Rankin Business Park Under New Management
- 1,287 - 10,000 SF available
- Industrial & Office suites
- 16' - 18' clear height
- Docks and grade level doors
- Zoned Light Industrial
- Ample on site parking

\$ LEASE RATE: \$11.95 SF/YR (MG)

The information provided herein along with any attachment(s) was obtained from sources believed to be reliable, however, Friedman Real Estate makes no guarantees, warranties, or representations as to the completeness or accuracy of such information and legal counsel is advised. All information provided is subject to verification and no liability for reliance on such information or errors or omissions is assumed. The presentation of this property is submitted subject to errors, omissions, change of price or conditions, prior sale or lease, or withdrawal without notice. Copyright © 2026 Friedman Real Estate. All rights reserved.

FOR MORE INFORMATION PLEASE CONTACT:



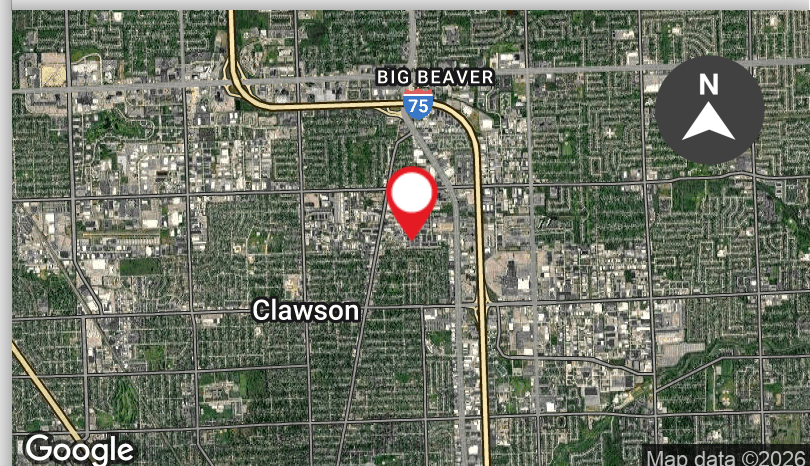
CHARLIE ELIAS
Associate, Brokerage Services
charlie.elias@freg.com



ZACH CUMMINGS
Senior Associate, Brokerage Services
zach.cummings@freg.com

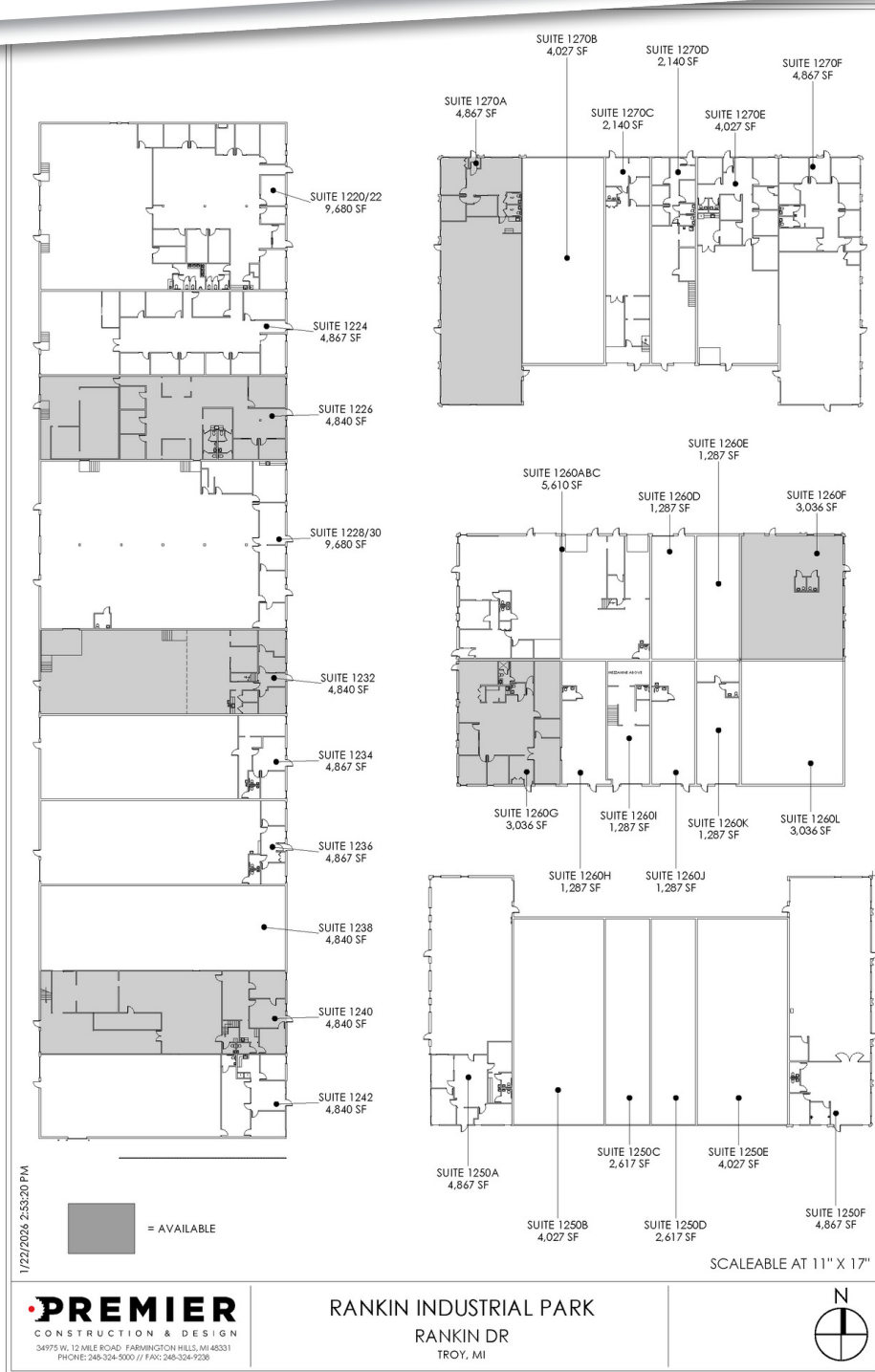
248.848.4117

eCODE 804



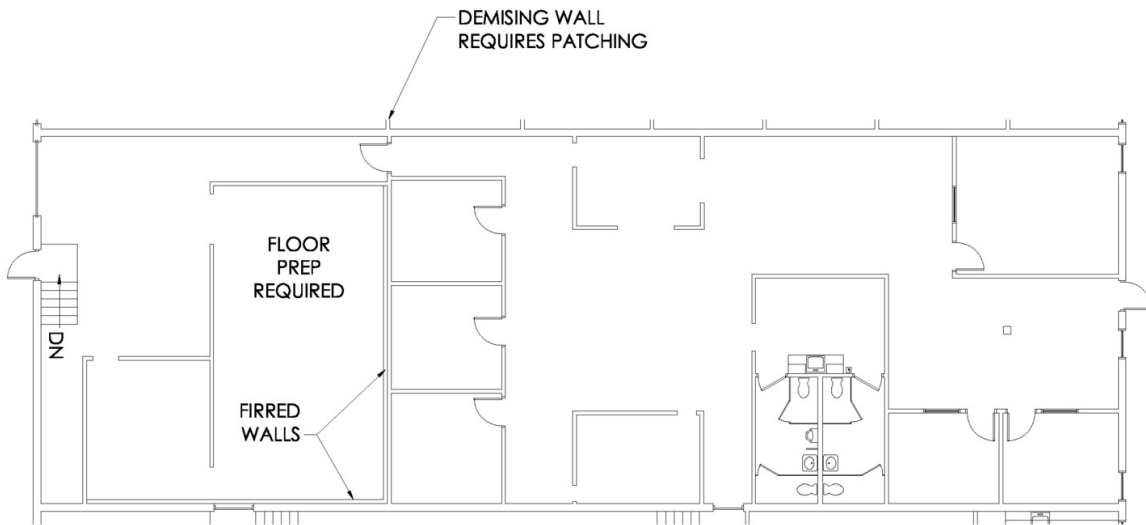
RANKIN BUSINESS PARK - 1220-1270 RANKIN STREET

PROPERTY **SITE PLAN**



RANKIN BUSINESS PARK - 1220-1270 RANKIN STREET
SUITE 1226 - INDUSTRIAL - DOCK DOOR

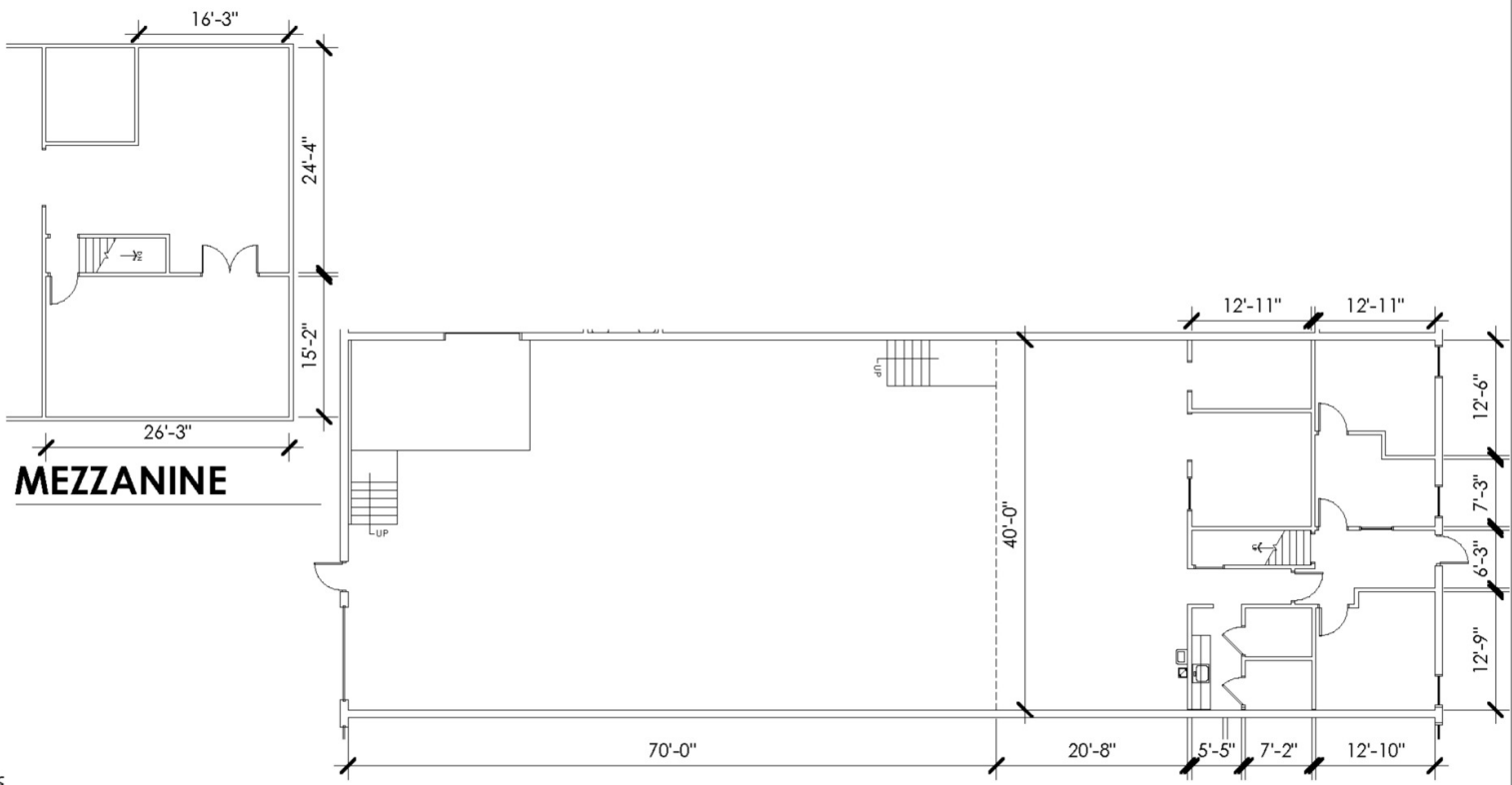
3,263 OFFICE SQFT
1,577 WAREHOUSE SQFT
4,840 TOTAL SQFT



SCALE :
1/16"=1'-0"



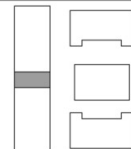
RANKIN BUSINESS PARK - 1220-1270 RANKIN STREET
SUITE 1232 - INDUSTRIAL - GRADE LEVEL DOOR



1/22/2026 3:11:08 PM

1,102 OFFICE SF
3,738 WAREHOUSE SF
4,840 TOTAL SF

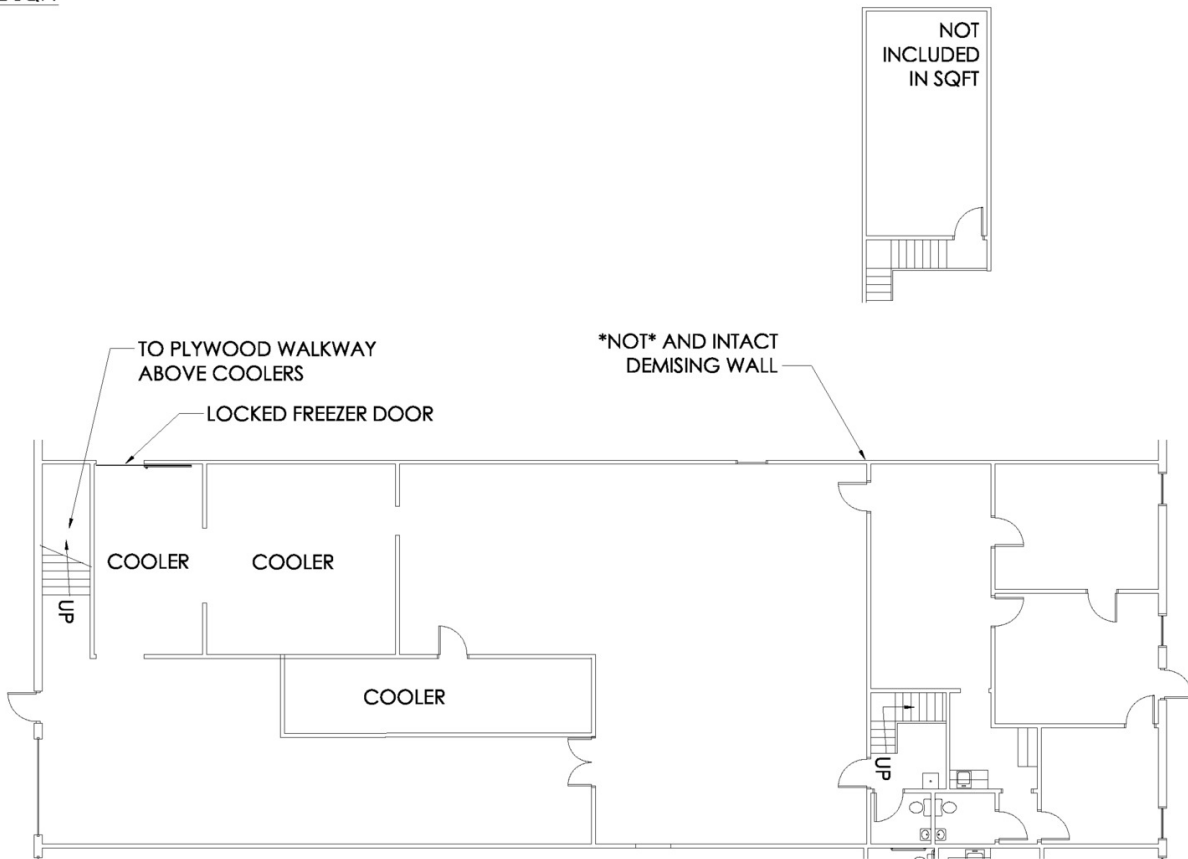
N
SCALE: 1/16" = 1'-0"



RANKIN BUSINESS PARK - 1220-1270 RANKIN STREET

SUITE 1240 - INDUSTRIAL - GRADE LEVEL DOOR

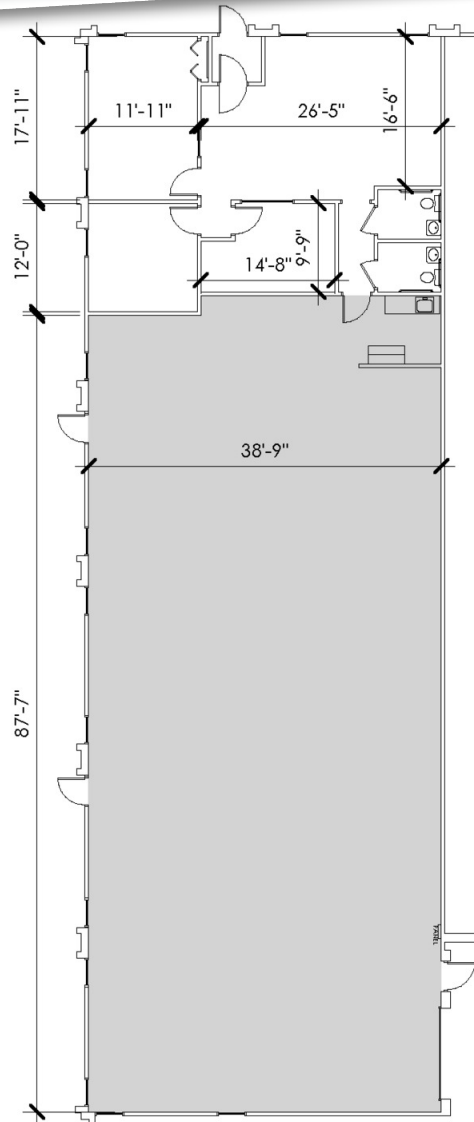
1,255 OFFICE SQFT
3,585 WAREHOUSE SQFT
4,840 TOTAL SQFT



SCALE:
1/16"=1'-0"



RANKIN BUSINESS PARK - 1220-1270 RANKIN STREET
SUITE 1270A - INDUSTRIAL - GRADE LEVEL DOOR



12/2/2025 4:28:58 PM

1,160 OFFICE SF
3,707 WAREHOUSE SF
4,867 TOTAL SF



SCALE: 1/16" = 1'-0"



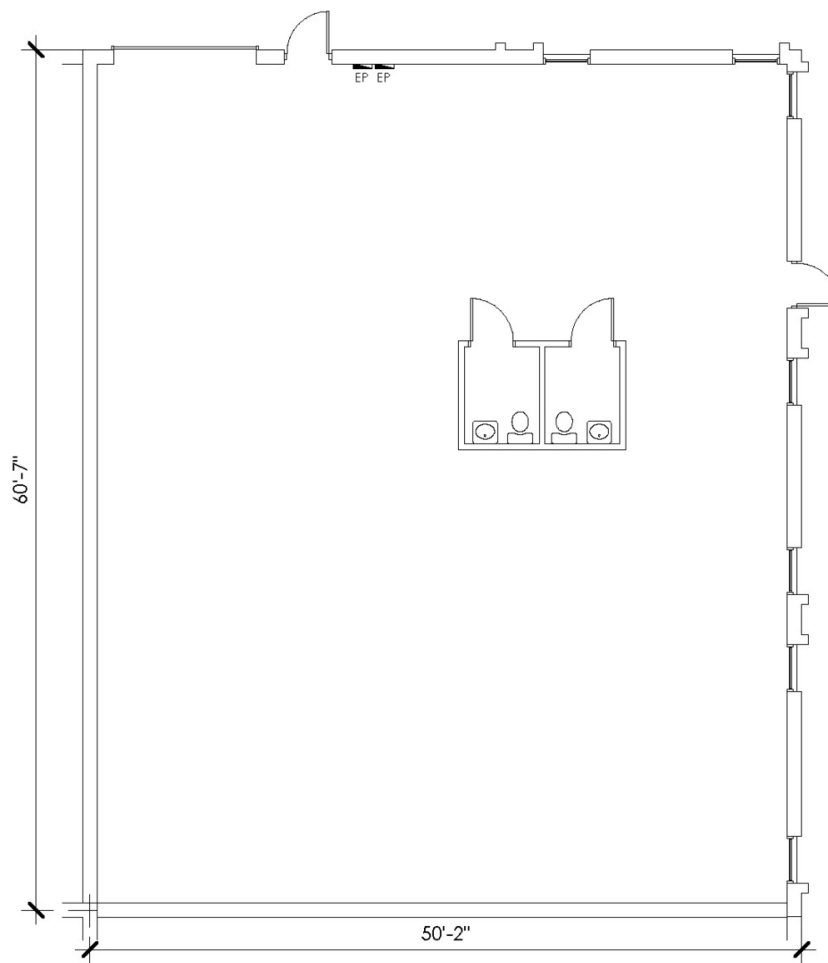
34975 W. 12 MILE ROAD FARMINGTON HILLS, MI 48331
PHONE: 248-324-2000 // FAX: 248-324-9238
WWW.FRIEDMANREALESTATE.COM

RANKING INDUSTRIAL PARK
RANKIN DR
TROY, MI

SUITE 1270A
4,867 SF

FOR DETAILS
PLEASE CALL:
248-324-2000

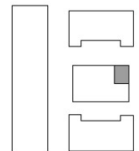
RANKIN BUSINESS PARK - 1220-1270 RANKIN STREET
SUITE 1260F - INDUSTRIAL — GRADE LEVEL DOOR



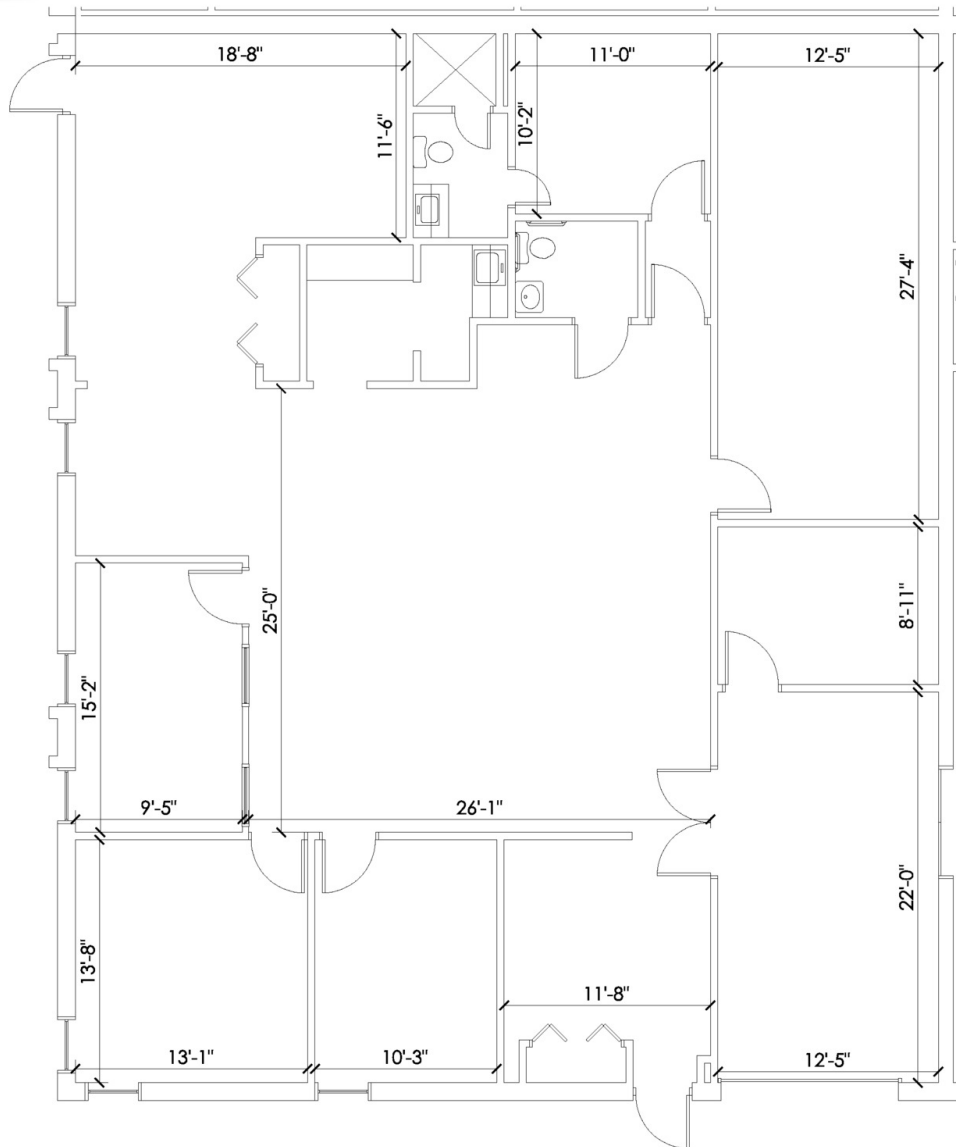
1/9/2026 10:14:29 AM



SCALE: 3/32" = 1'-0"



RANKIN BUSINESS PARK - 1220-1270 RANKIN STREET
SUITE 1260G - OFFICE



SCALE:
1/8"=1'-0"