

AVAILABLE FOR LEASE

3325 SHERIDAN ROAD, ZION, IL 60099

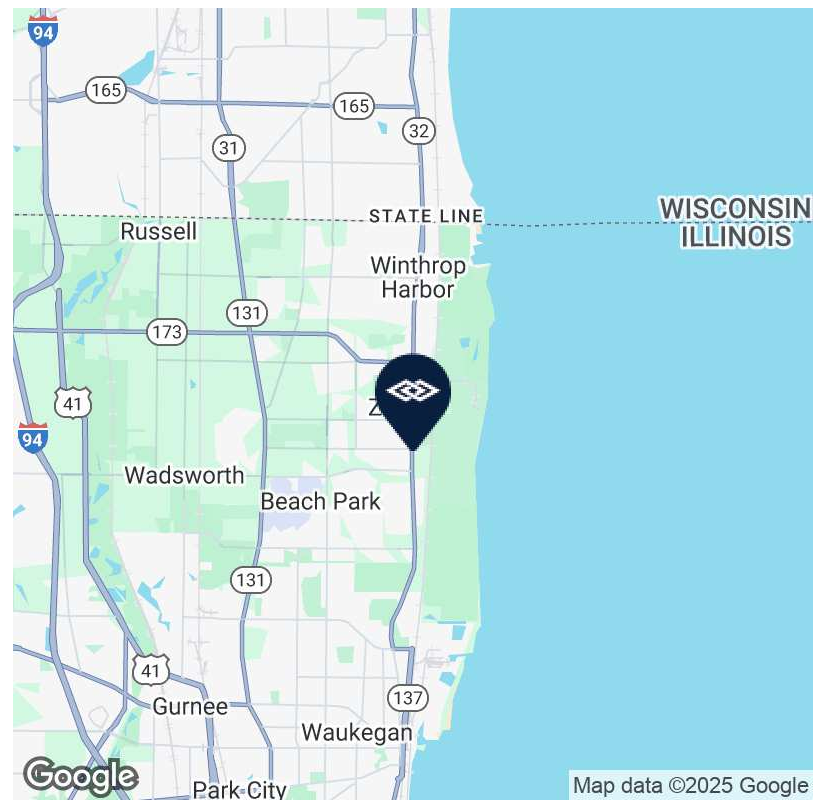


OFFERING SUMMARY

Building Size 1,835 SF
Lease Rate Subject to Offer

PROPERTY DESCRIPTION

- Free-standing retail on heavily traveled stretch of Sheridan Rd
- New Culver's, Popeye's, McDonald's and Wendy's nearby
- Potential drive-thru opportunity
- Built in 1977
- 47 Parking Spots
- Highly coveted dedicated turn lane into property



AVAILABLE FOR LEASE

3325 SHERIDAN ROAD, ZION, IL 60099



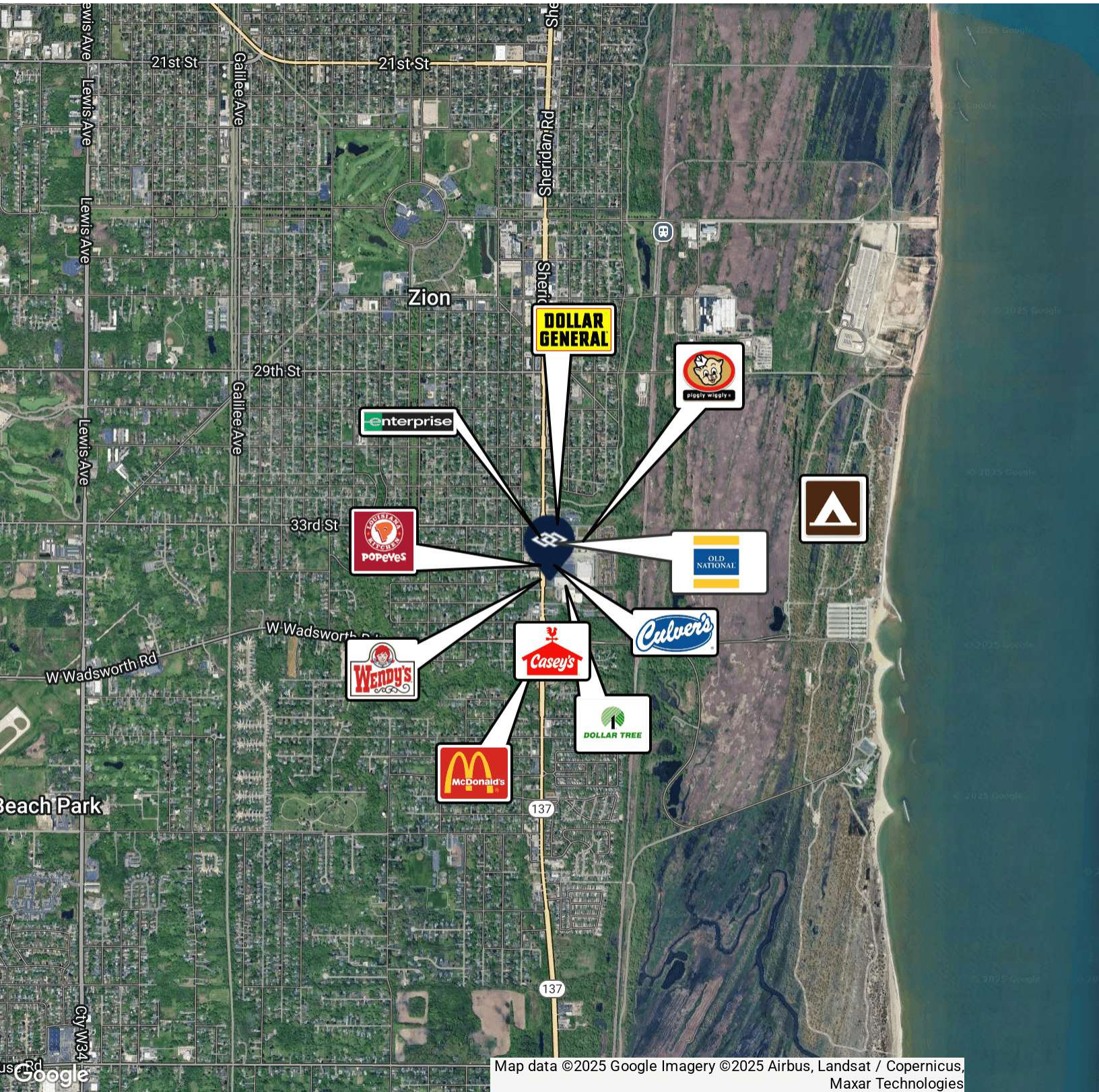
LAURA PERLMAN | Associate | 773.714.2147 | lperlman@darwinpw.com



970 N Oaklawn, Suite 100 | Elmhurst, IL 60126 | Tel: 630.782.9520 | darwinpw.com
Submitted subject to error, change in status, or withdrawal without notice.

AVAILABLE FOR LEASE

3325 SHERIDAN ROAD, ZION, IL 60099



Map data ©2025 Google Imagery ©2025 Airbus, Landsat / Copernicus, Maxar Technologies