

1275 County Road 210 W  
St John, FL 32259

# FOR LEASE



2,500+/- sq ft of storage space  
3- 12'w x 11'h Doors  
Metal Building  
Zoned – PUD Mixed Use  
Several uses available for the property

Close to Twin Creeks development  
Easy access to I-95 – ½ mile away  
Strong Demographics  
Across the street from Beachwalk  
Close proximity to Nocatee

Call Now!  
Michael Woods:  
980-262-4200

**CLEARCREEK**  
BROTHERS MANAGEMENT, LLC

BACK



LEFT

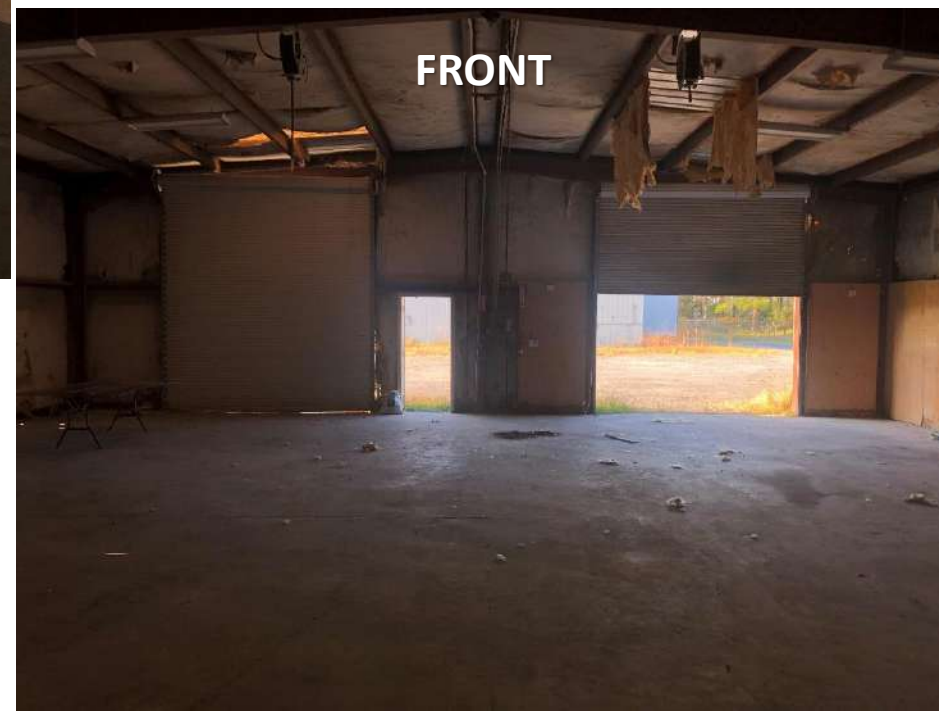


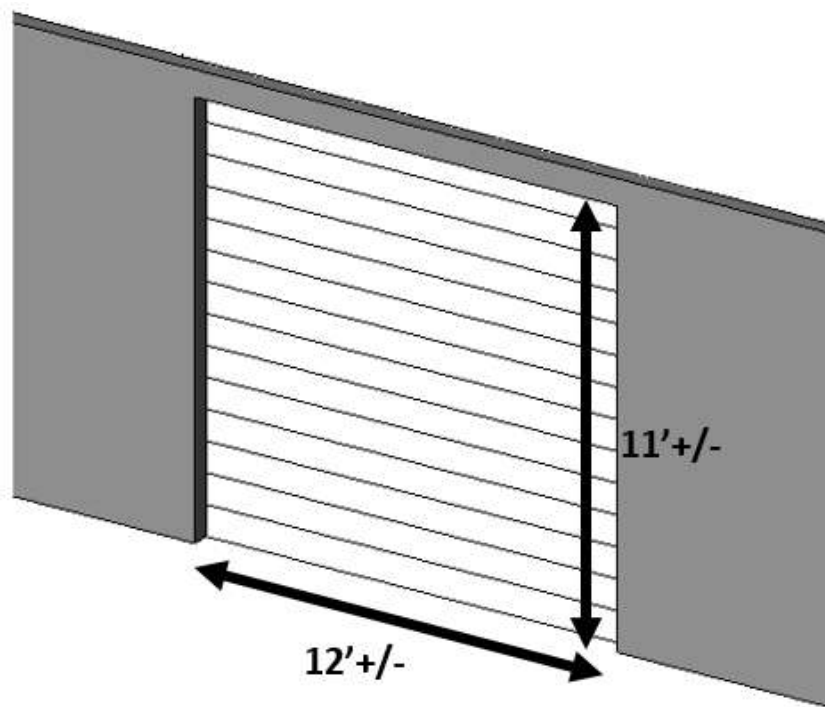
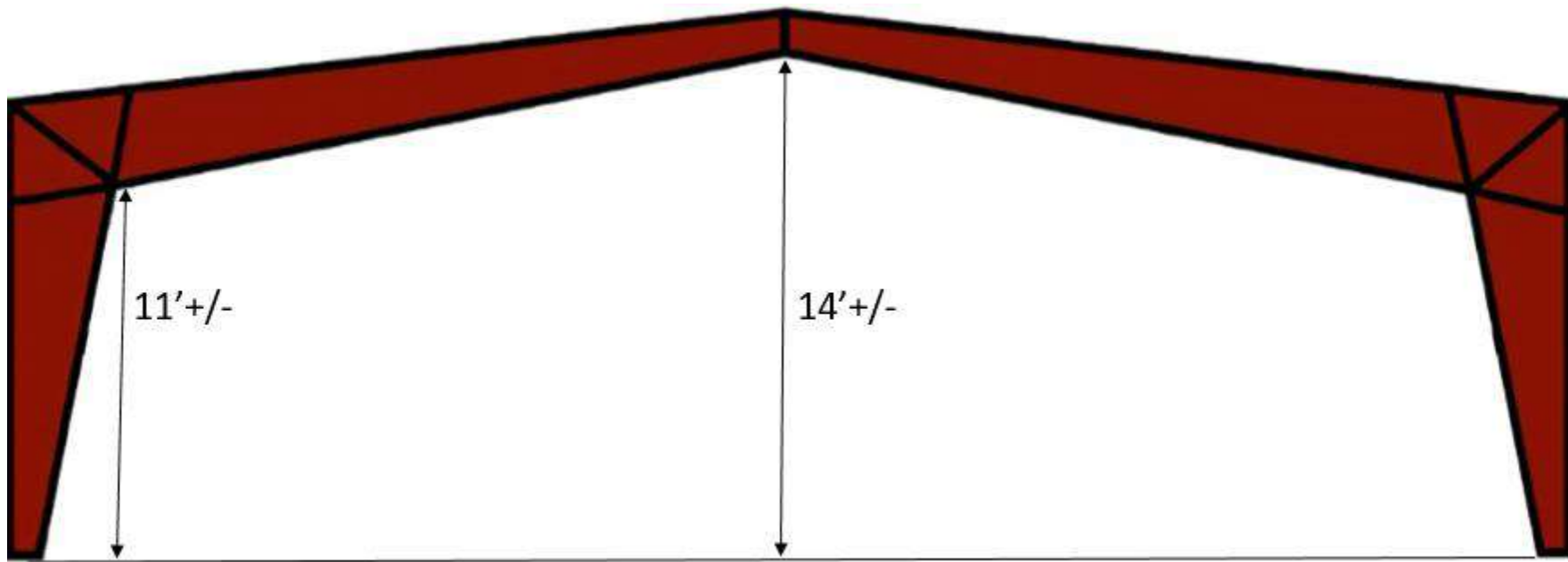
RIGHT



FRONT









Tenant agrees to be flexible with dashed outside storage lines and agrees to work with Landlord to allow for Landlord's land use development plans to build additional buildings. Landlord has the right to shrink or modify the outside storage lines to accommodate Landlord's development plans.