

Leasing by:



MEDICAL OFFICE SPACE --- **FOR LEASE**

Click or Scan Below



FOR INFORMATION:

KYLE CHURCH
Lightpoint Real Estate Partners

205.919.1528
kyle@lightpointcre.com

Princeton II

817 PRINCETON AVENUE | BIRMINGHAM, AL

medicaloffice.welltower.com

EXECUTIVE SUMMARY

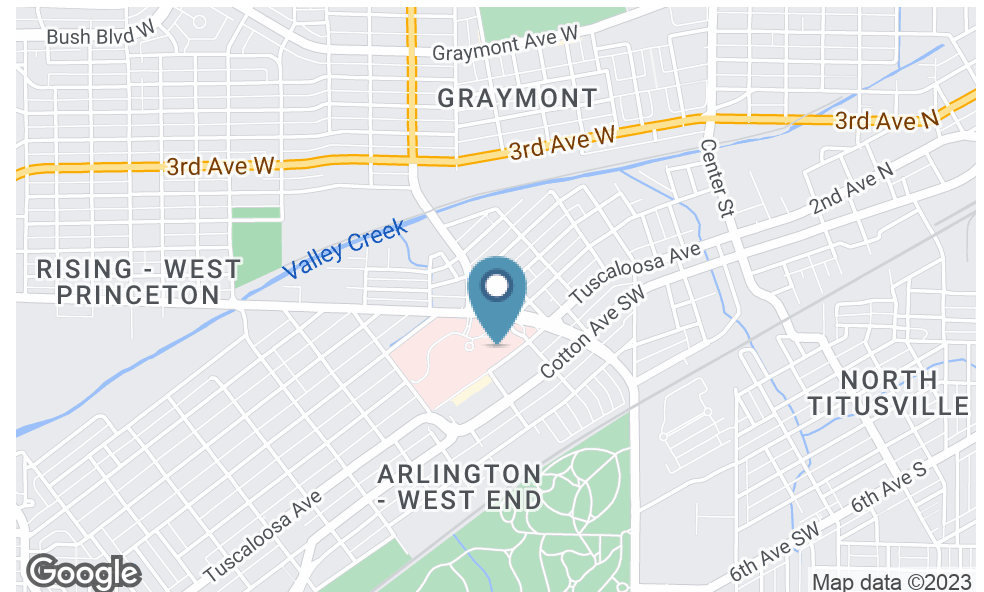


Location Description

Located on the campus of Princeton Baptist Medical Center.

Property Highlights

- The Princeton facility consists of over 252,000 s.f. and offers a variety of medical specialties and diagnostic services including cancer treatment, cardiac services, diagnostic imaging, neurosurgery and pulmonary medicine and wound care.
- Competitive lease rates and generous tenant improvement allowances.
- Excellent tenant mix with potential referral opportunities

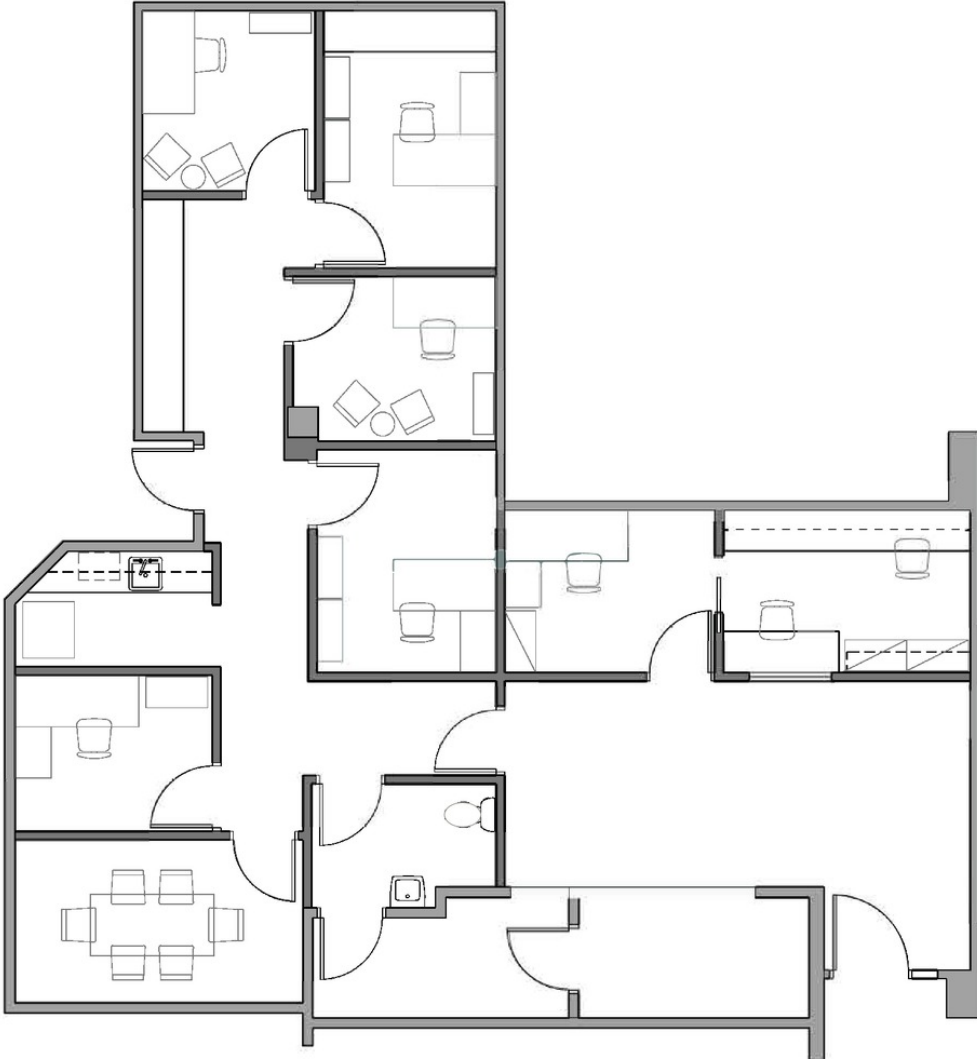


KYLE CHURCH
205.919.1528
kyle@lightpointcre.com



FLOOR PLANS

welltower



115

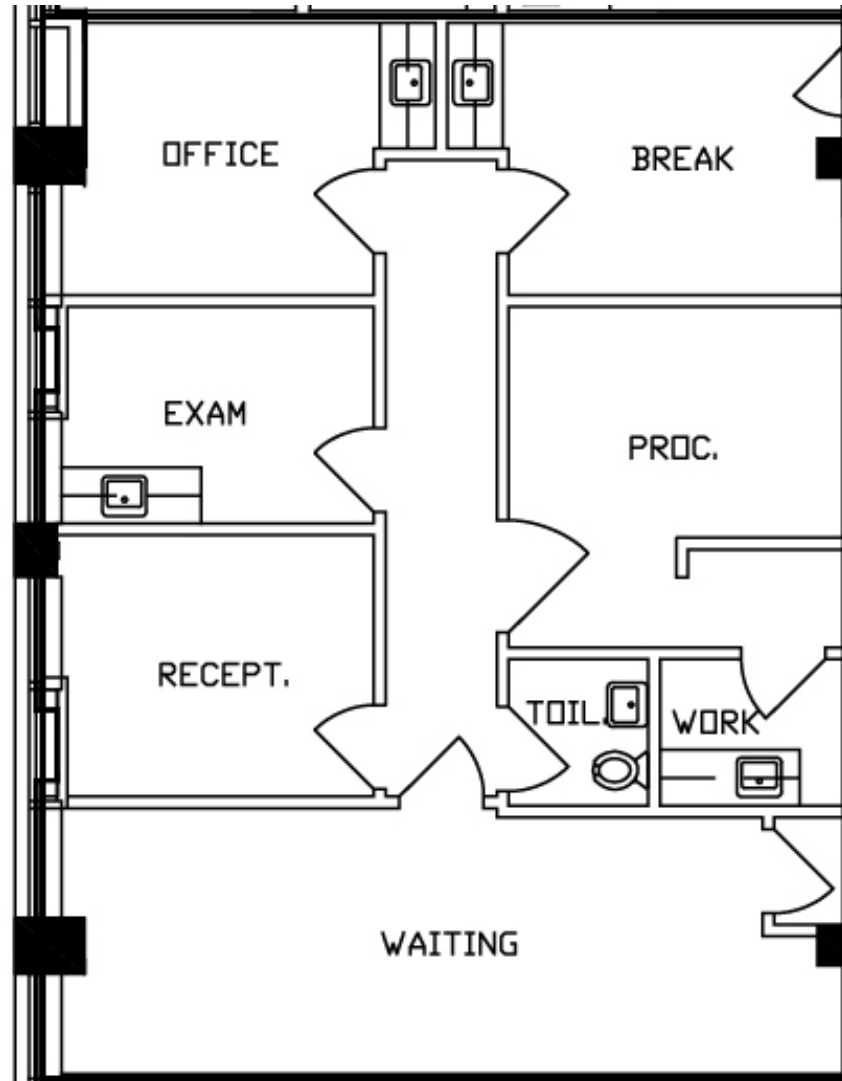
867 RSF

KYLE CHURCH
205.919.1528
kyle@lightpointcre.com



FLOOR PLANS

welltower



304

1,384 RSF

KYLE CHURCH
205.919.1528
kyle@lightpointcre.com

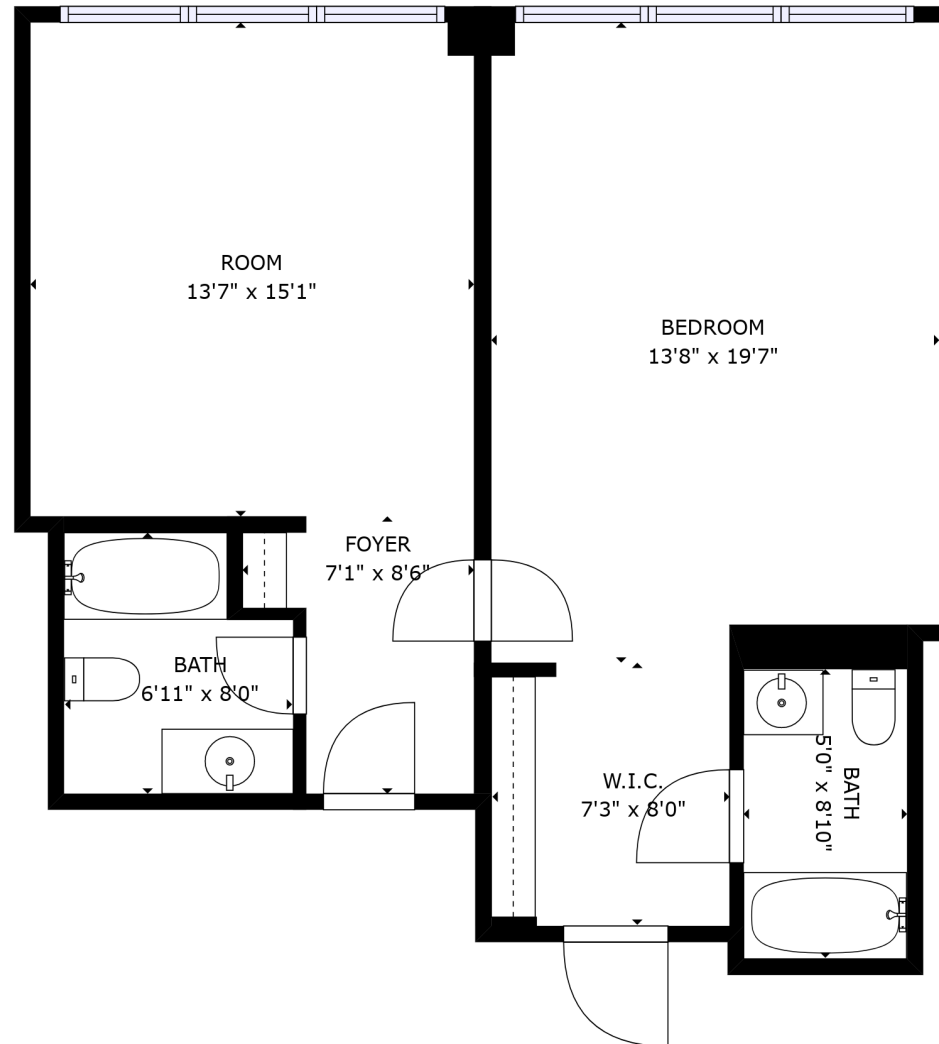


Lightpoint

A Healthcare Real Estate Firm

FLOOR PLANS

welltower



500

2,686 RSF

KYLE CHURCH
205.919.1528
kyle@lightpointcre.com



Lightpoint
A Healthcare Real Estate Firm

DEMOGRAPHICS MAP & REPORT



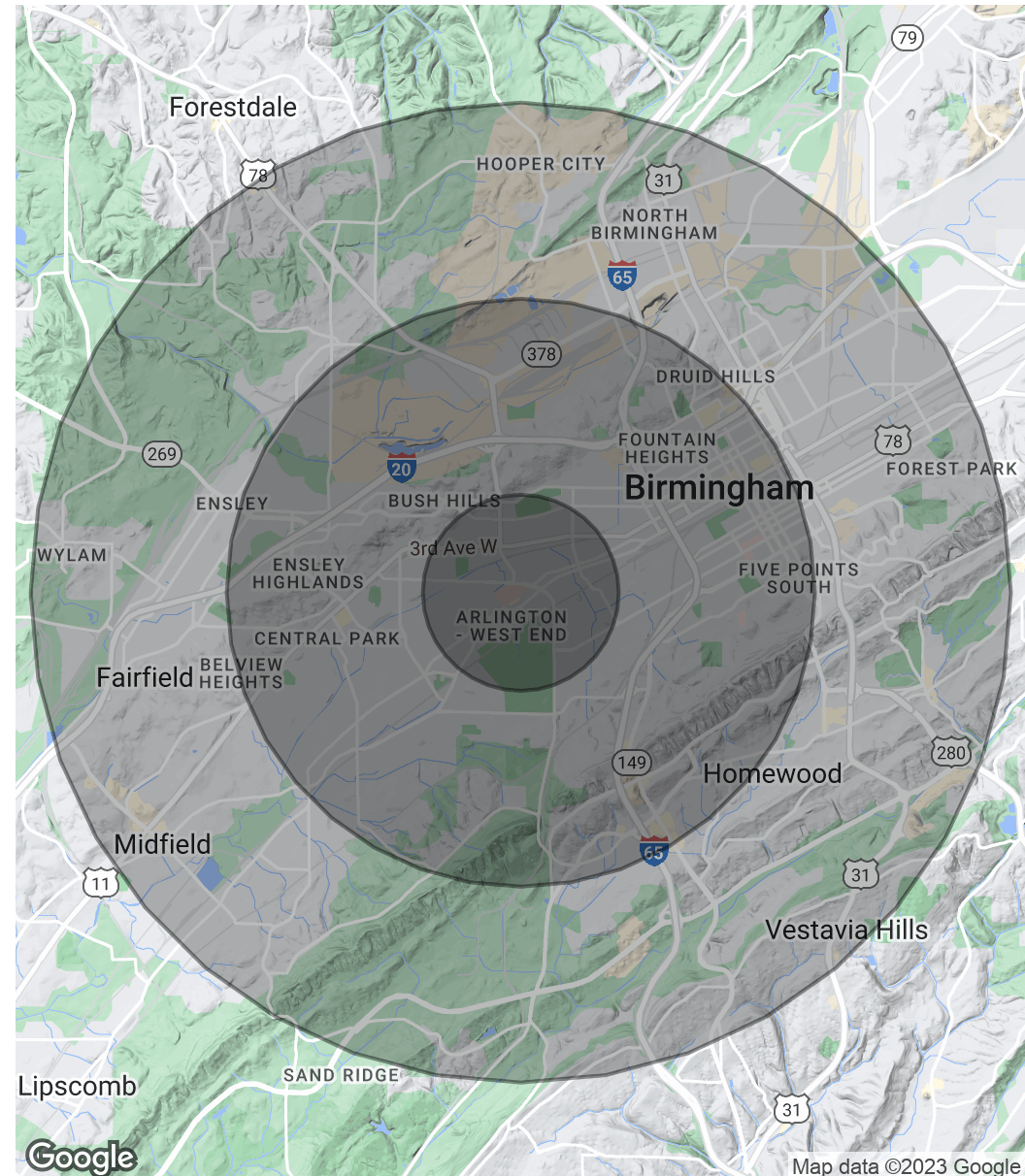
Population

	1 Mile	3 Miles	5 Miles
Total Population	11,645	83,443	188,799
Average Age	35.2	35.8	35.0
Average Age (Male)	33.3	34.1	33.8
Average Age (Female)	36.2	37.4	36.2

Households & Income

	1 Mile	3 Miles	5 Miles
Total Households	4,765	34,408	77,877
# of Persons per HH	2.4	2.4	2.4
Average HH Income	\$27,760	\$36,158	\$47,284
Average House Value	\$78,847	\$88,047	\$121,857

* Demographic data derived from 2020 ACS - US Census



KYLE CHURCH
 205.919.1528
 kyle@lightpointcre.com

