

For Lease

1,000 - 3,700 SF | \$22.00 SF/yr  
Retail Space



## 39-41 E Court

39 E Court St  
Cincinnati, Ohio 45202

### Property Highlights

- \$22.00 SF/yr Base Rent + \$5.71 NNN
- Great Corner Opportunity in Midtown Cincinnati
- 2 Units - 2700 sf & 1000 sf (Can be Combined for 3700 sf)
- Perfect for Retail of All Types; Perfect for high visibility Office
- Attractive, Fully Renovated space with great Walkability & Signage

### Offering Summary

|                |                     |
|----------------|---------------------|
| Lease Rate:    | \$22.00 SF/yr (NNN) |
| Building Size: | 3,700 SF            |
| Available SF:  | 1,000 - 3,700 SF    |

| Demographics     | 1 Mile | 3 Miles | 5 Miles |
|------------------|--------|---------|---------|
| Total Households | 11,322 | 63,735  | 139,656 |

### For More Information

#### Cindy Metz

O: 513 322 6303  
cmetz@bergman-group.com | OH #SAL.2003005046

#### Hayden Batchelor

O: 513 322 6318  
hbatchelor@bergman-group.com | OH #SAL.2021004901

#### Emmanuel Pastoriza

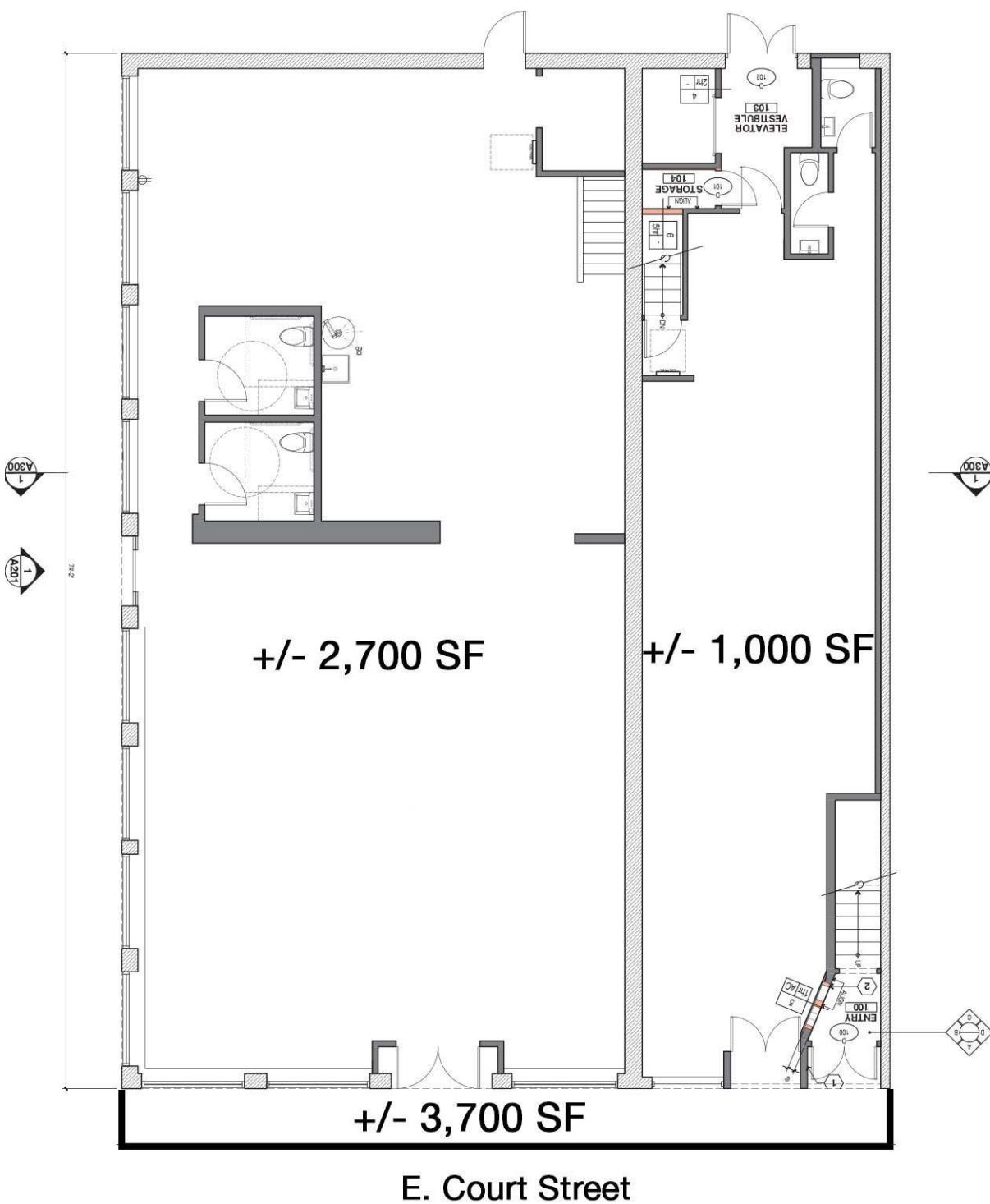
O: 513 512 1112  
epastoriza@bergman-group.com | OH #SAL.2024006401

For Lease

1,000 - 3,700 SF | \$22.00 SF/yr

Retail Space

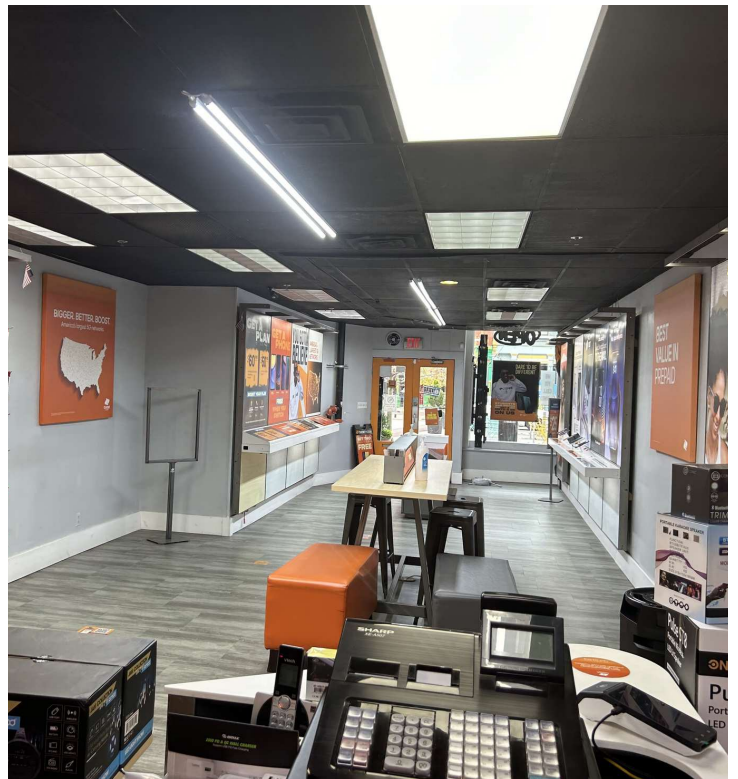
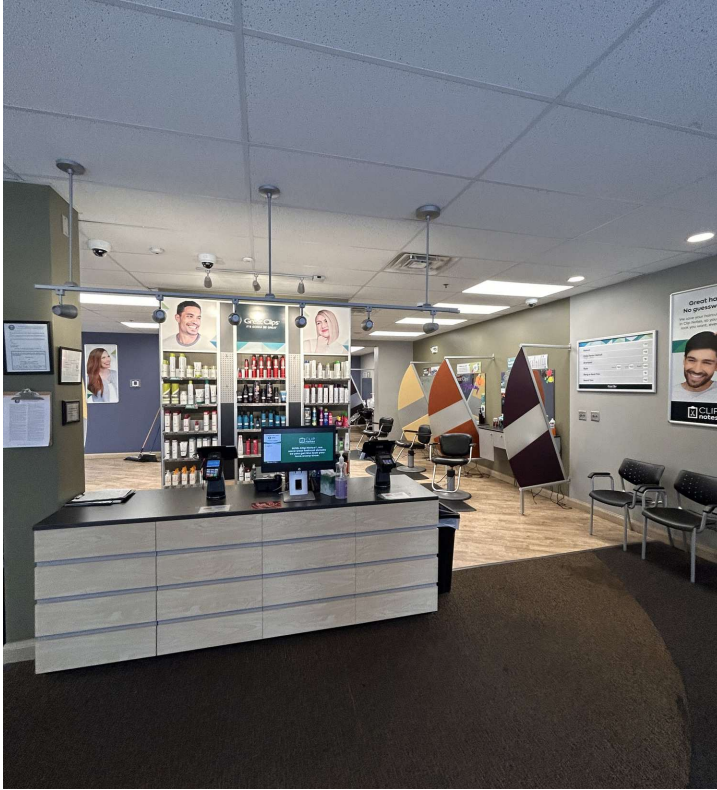
## 39-41 E Court Street





For Lease

1,000 - 3,700 SF | \$22.00 SF/yr  
Retail Space



**BROCHURE** | 39-41 E Court 39 E Court St Cincinnati, OH 45202

No Warranty Or Representation, Express Or Implied, Is Made As To The Accuracy Of The Information Contained Herein, And The Same Is Submitted Subject To Errors, Omissions, Change Of Price, Rental Or Other Conditions, Prior Sale, Lease Or Financing, Or Withdrawal Without Notice, And Of Any Special Listing Conditions Imposed By Our Principals No Warranties Or Representations Are Made As To The Condition Of The Property Or Any Hazards Contained Therein Are Any To Be Implied.



For Lease

1,000 - 3,700 SF | \$22.00 SF/yr

Retail Space



**BROCHURE** | 39-41 E Court 39 E Court St Cincinnati, OH 45202

No Warranty Or Representation, Express Or Implied, Is Made As To The Accuracy Of The Information Contained Herein, And The Same Is Submitted Subject To Errors, Omissions, Change Of Price, Rental Or Other Conditions, Prior Sale, Lease Or Financing, Or Withdrawal Without Notice, And Of Any Special Listing Conditions Imposed By Our Principals No Warranties Or Representations Are Made As To The Condition Of The Property Or Any Hazards Contained Therein Are Any To Be Implied.

For Lease

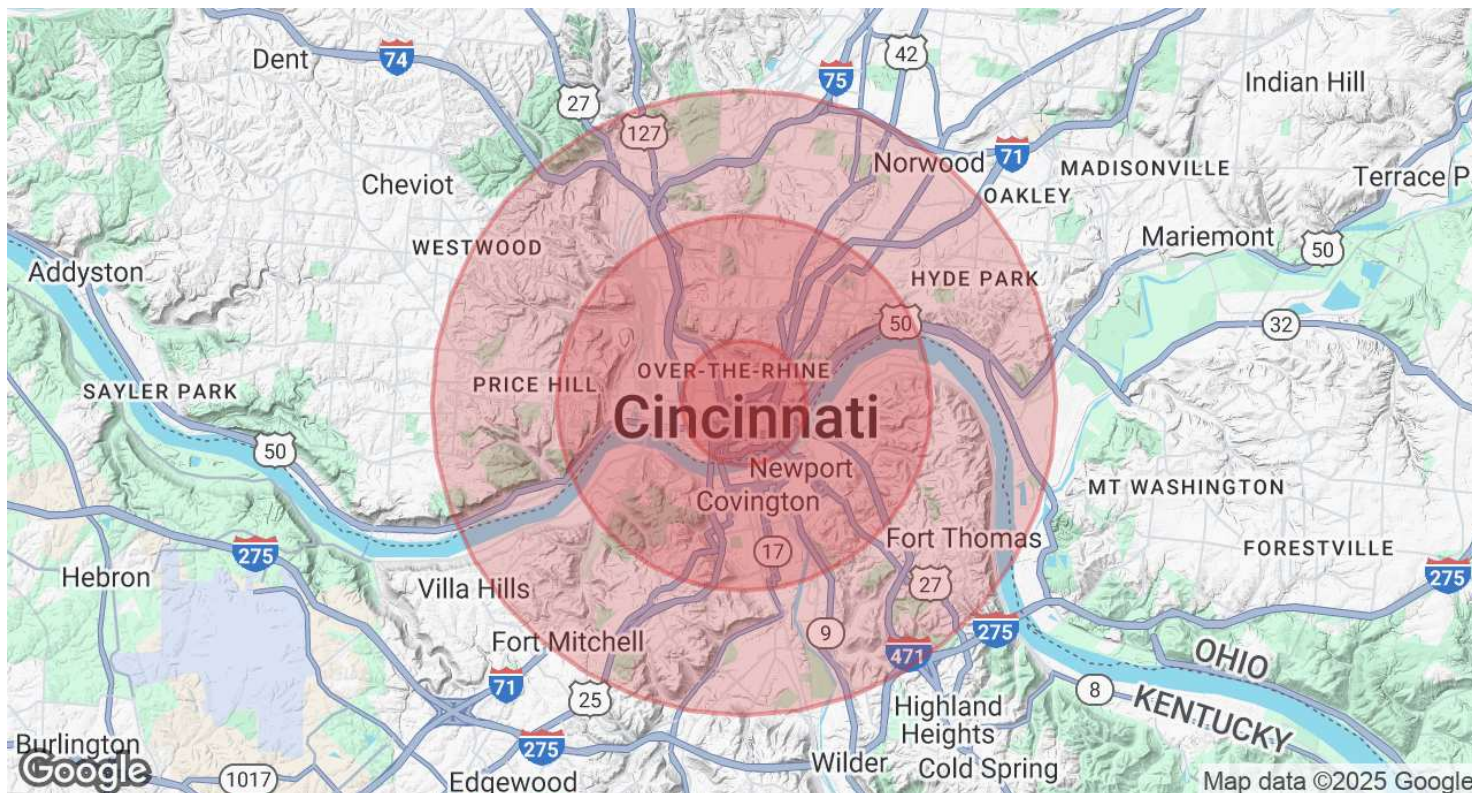
1,000 - 3,700 SF | \$22.00 SF/yr

Retail Space



# For Lease

## 1,000 - 3,700 SF | \$22.00 SF/yr Retail Space



| Population           | 1 Mile | 3 Miles | 5 Miles |
|----------------------|--------|---------|---------|
| Total Population     | 21,028 | 140,134 | 315,526 |
| Average Age          | 37     | 36      | 37      |
| Average Age (Male)   | 37     | 36      | 37      |
| Average Age (Female) | 37     | 37      | 38      |

| Households & Income | 1 Mile    | 3 Miles   | 5 Miles   |
|---------------------|-----------|-----------|-----------|
| Total Households    | 11,322    | 63,735    | 139,656   |
| # of Persons per HH | 1.9       | 2.2       | 2.3       |
| Average HH Income   | \$106,499 | \$78,276  | \$85,359  |
| Average House Value | \$479,601 | \$315,386 | \$317,988 |

Demographics data derived from AlphaMap