

INTERSTATE OUTLOTS AVAILABLE

2201 W Southport Road - Indianapolis, IN 46217



MIDLAND ATLANTIC
PROPERTIES



PROPERTY OVERVIEW

Development Located at Southwest Corner of I-69 and Southport Road

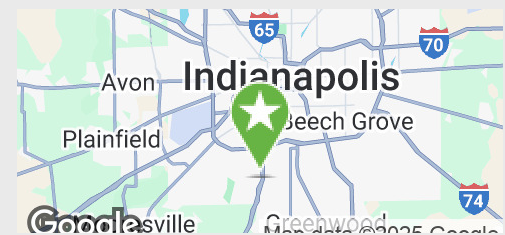
PROPERTY HIGHLIGHTS

- 1.25 Acre 1st Tier Outlot For Lease
- 4.88 Acres of 2nd Tier Pads Available For Sale
- I-69 Construction Complete
- Southport Road Extension West to SR 67 at Ameriplex Parkway Planned by Indianapolis/Marion County Thoroughfare Plan
- Additional Commercial Sites Available to the South at County Line Road Exit

| DEMOGRAPHICS | 1 MILE | 3 MILES |
|-------------------|-----------|-----------|
| Total Population | 11,341 | 46,834 |
| Average HH Income | \$119,094 | \$110,160 |
| Businesses | 304 | 1,250 |
| Employees | 1,764 | 9,193 |

TRAFFIC COUNTS

| | |
|----------------|--------|
| SR 37 / I-69 | 36,939 |
| Southport Road | 16,832 |



MIDLAND ATLANTIC PROPERTIES

Indianapolis Office
3801 East 82nd Street, Suite B
Indianapolis, IN 46240

MIDLANDATLANTIC.COM

PATRICK BOYLE

Direct: 317.597.1718
Cell: 317.679.6322
pjboyle@midlandatlantic.us

SHAWN HEFFERN

Direct: 317.597.1715
Cell: 317.695.8938
sheffern@midlandatlantic.us

DEVELOPMENT • BROKERAGE • ACQUISITIONS • MANAGEMENT

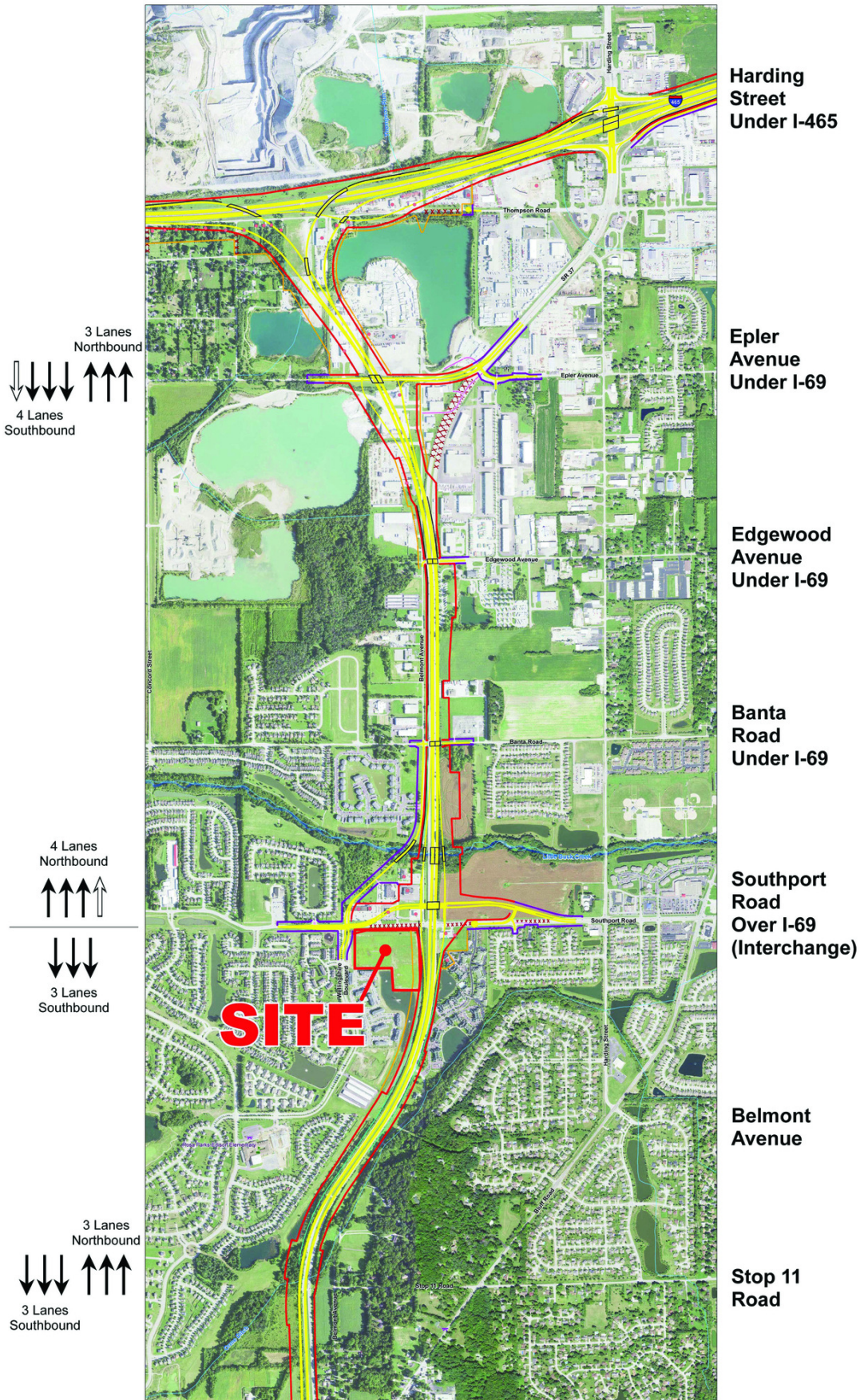
Information contained herein has been obtained from sources deemed reliable but is not guaranteed and is subject to change without notice.

INTERSTATE OUTLOTS AVAILABLE

2201 W Southport Road Indianapolis, IN 46217



MIDLAND ATLANTIC
PROPERTIES



INTERSTATE OUTLOTS AVAILABLE

2201 W Southport Road - Indianapolis, IN 46217



MIDLAND ATLANTIC
PROPERTIES

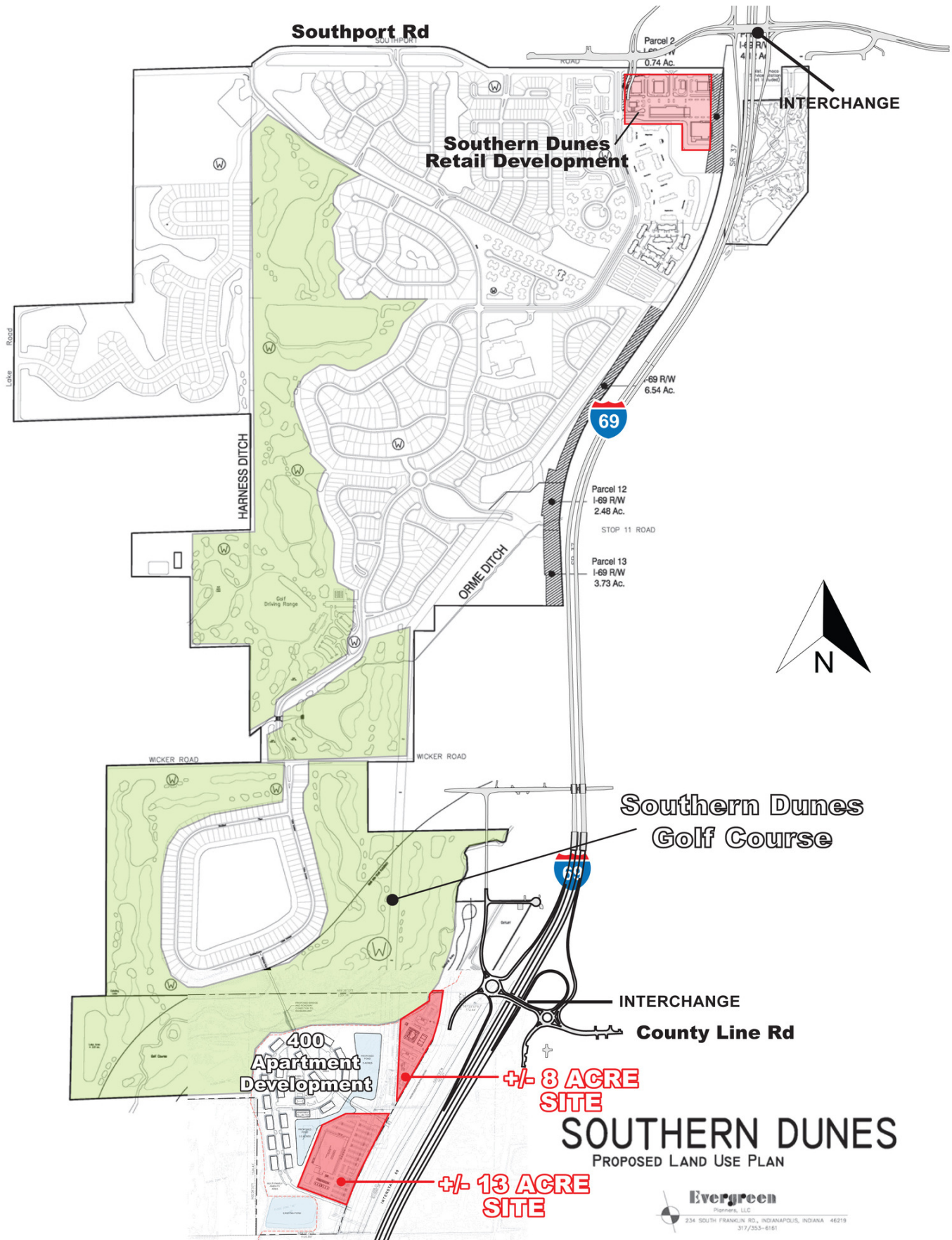


INTERSTATE OUTLOTS AVAILABLE

2201 W Southport Road - Indianapolis, IN 46217



MIDLAND ATLANTIC
PROPERTIES



INTERSTATE OUTLOTS AVAILABLE

2201 W Southport Road Indianapolis, IN 46217



MIDLAND ATLANTIC
PROPERTIES

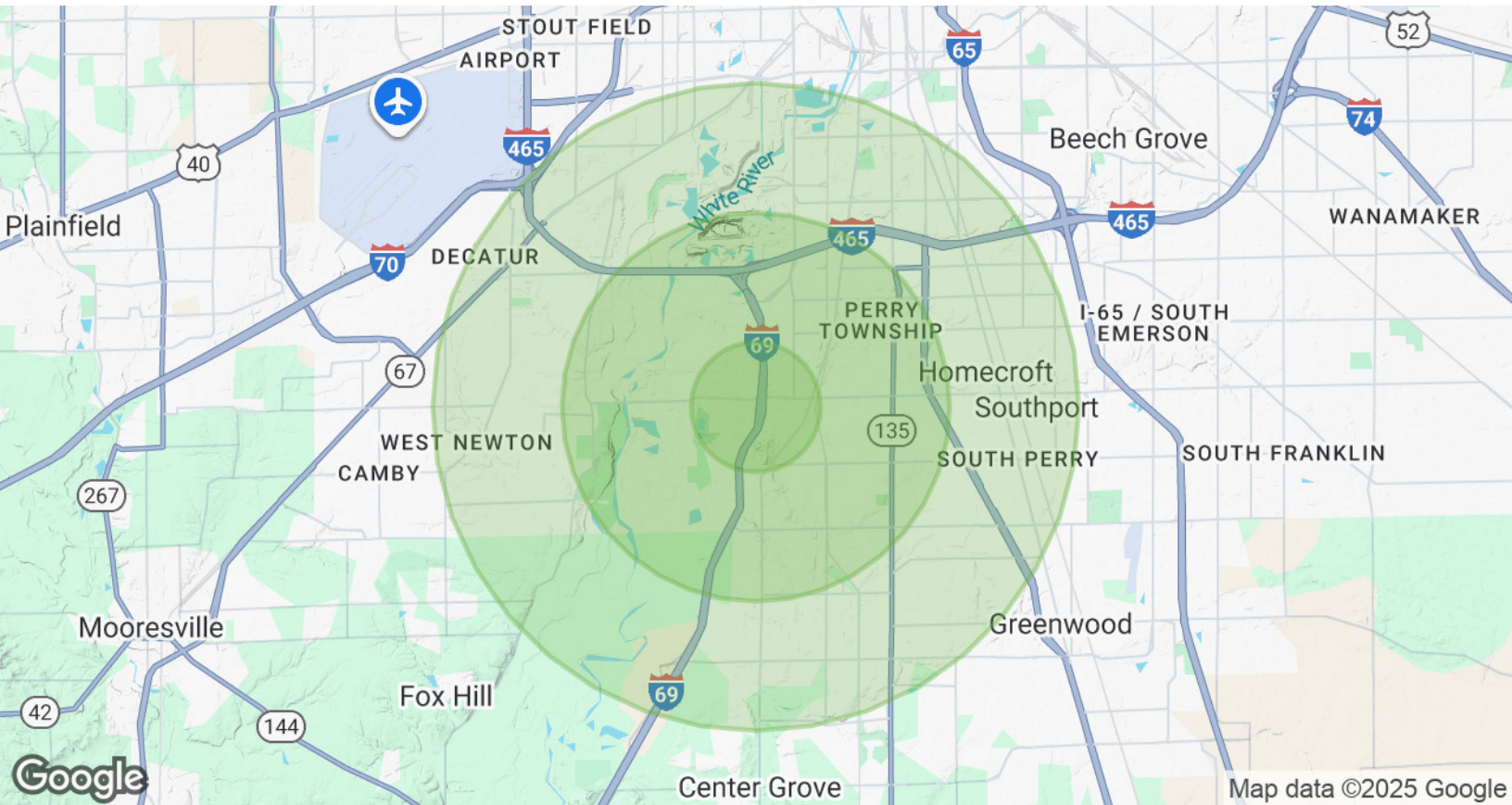


INTERSTATE OUTLOTS AVAILABLE

2201 W Southport Road Indianapolis, IN 46217



MIDLAND ATLANTIC
PROPERTIES



POPULATION & HOUSING

| | 1 MILE | 3 MILES | 5 MILES |
|-------------------|-----------|-----------|-----------|
| Total Population | 11,341 | 46,834 | 152,462 |
| Total Households | 4,265 | 17,588 | 58,213 |
| Median Home Value | \$255,889 | \$258,150 | \$245,892 |

INCOME & BUSINESS

| | 1 MILE | 3 MILES | 5 MILES |
|--------------------------------|-----------|-----------|----------|
| Average HH income | \$119,094 | \$110,160 | \$94,847 |
| Daytime Population (16+ years) | 3,702 | 20,030 | 80,373 |
| Total Businesses | 304 | 1,250 | 4,998 |
| Total Employees | 1,764 | 9,193 | 39,813 |

MIDLAND ATLANTIC PROPERTIES

Indianapolis Office
3801 East 82nd Street, Suite B
Indianapolis, IN 46240

MIDLANDATLANTIC.COM

PATRICK BOYLE

Direct: 317.597.1718
Cell: 317.679.6322
pjboyle@midlandatlantic.us

SHAWN HEFFERN

Direct: 317.597.1715
Cell: 317.695.8938
sheffern@midlandatlantic.us

DEVELOPMENT • BROKERAGE • ACQUISITIONS • MANAGEMENT

Information contained herein has been obtained from sources deemed reliable but is not guaranteed and is subject to change without notice.