

# Main and Interior Photo Brochure

25101 122nd Trail

Marshall

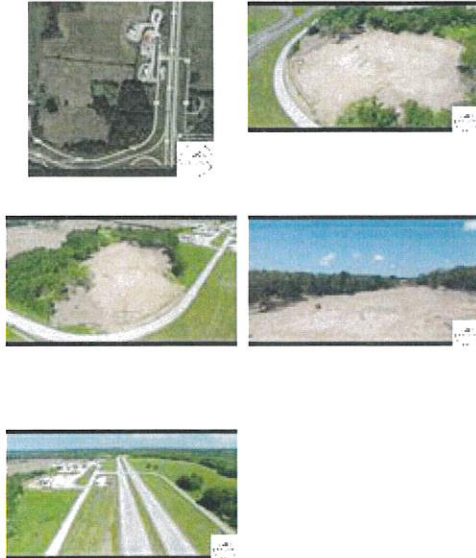
\$325,000



## M PROPERTY INFORMATION

MLS #	97793
Type	Vacant Ground
Area	Saline County
Status	Active
Road Frontage	Interchange
Number of Units	
Parking	None
Bathrooms	
Handicap Access Y/N	
Improvements	No
Land Status	Land Included
Number of Stories	
Acreage +/-	5.70
Approx Age	

## Virtual Virtual Tour



## Features

**LOCATION** Belt Hwy Area

## Remarks

Approximately 3 acre compressed site on acreage for building pad, city water on north line. Rural water on North line. Total acreage is +/-5.7 acres. Super commercial location on the NW quarter of Interstate 70 and Hwy 65 at Marshall Junction.

## Directions

NW corner of I-70 and Hwy 65 (Marshall Junction)



**TONY MONSEES**  
 Cell: 660-460-5811  
 tony@cbmrc.com



**Coldwell Banker Monsees Realty**  
 2111 W. BROADWAY  
 SEDALIA MO 65301-2539

Listing Agent: TONY MONSEES

Listing Office: Coldwell Banker Monsees Realty

Agent License # 2004019660

Office License # 2004019642

This information is deemed reliable, but not guaranteed.

08/07/2024  
 02:12 PM

Page 1 of 2

# 25101 122nd Trail Marshall

Left click on the map to reposition the map. Right click on the map to zoom in and out, switch to aerial or bird's eye view and other options.

