

Industrial Space For Lease

6408 & 6410 E Archer St

Tulsa, OK 74115

WIGGIN
PROPERTIES, LLC



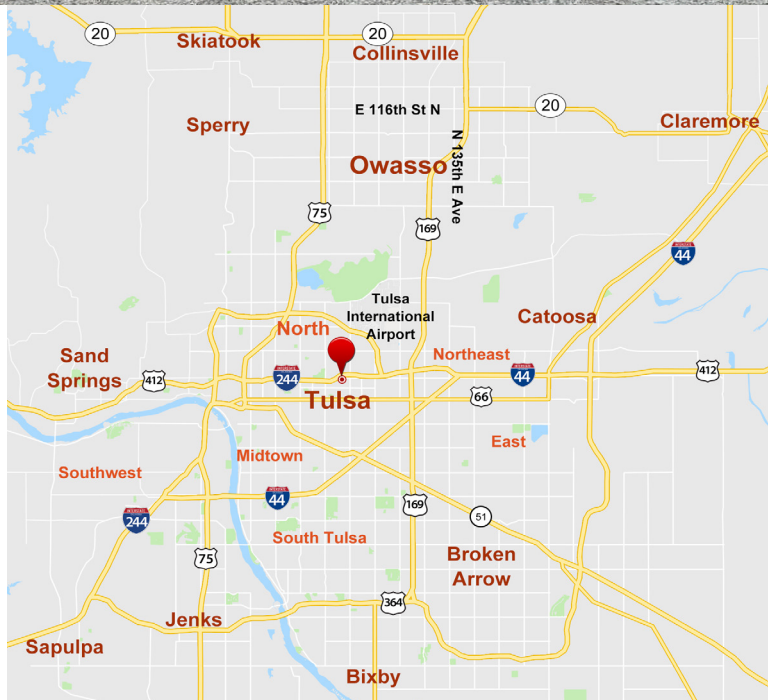
Industrial Space for Lease

Building SF: 2,550 sf - 6,000 sf

Lease Rate: \$6.00 psf NNN

Highlights:

- Highway Signage
- Multiple Spaces Available
- New Security Lighting
- New Exterior Paint
- Amazing Access to Highway 412 & 169
- Fenced and Graveled Private Parking Area
- Central Location Within 10 Minutes of South Tulsa
- 20' Clear Heights



Call Paul Bush at **918.287.7825**

pbush@wigginprop.com | wigginprop.com

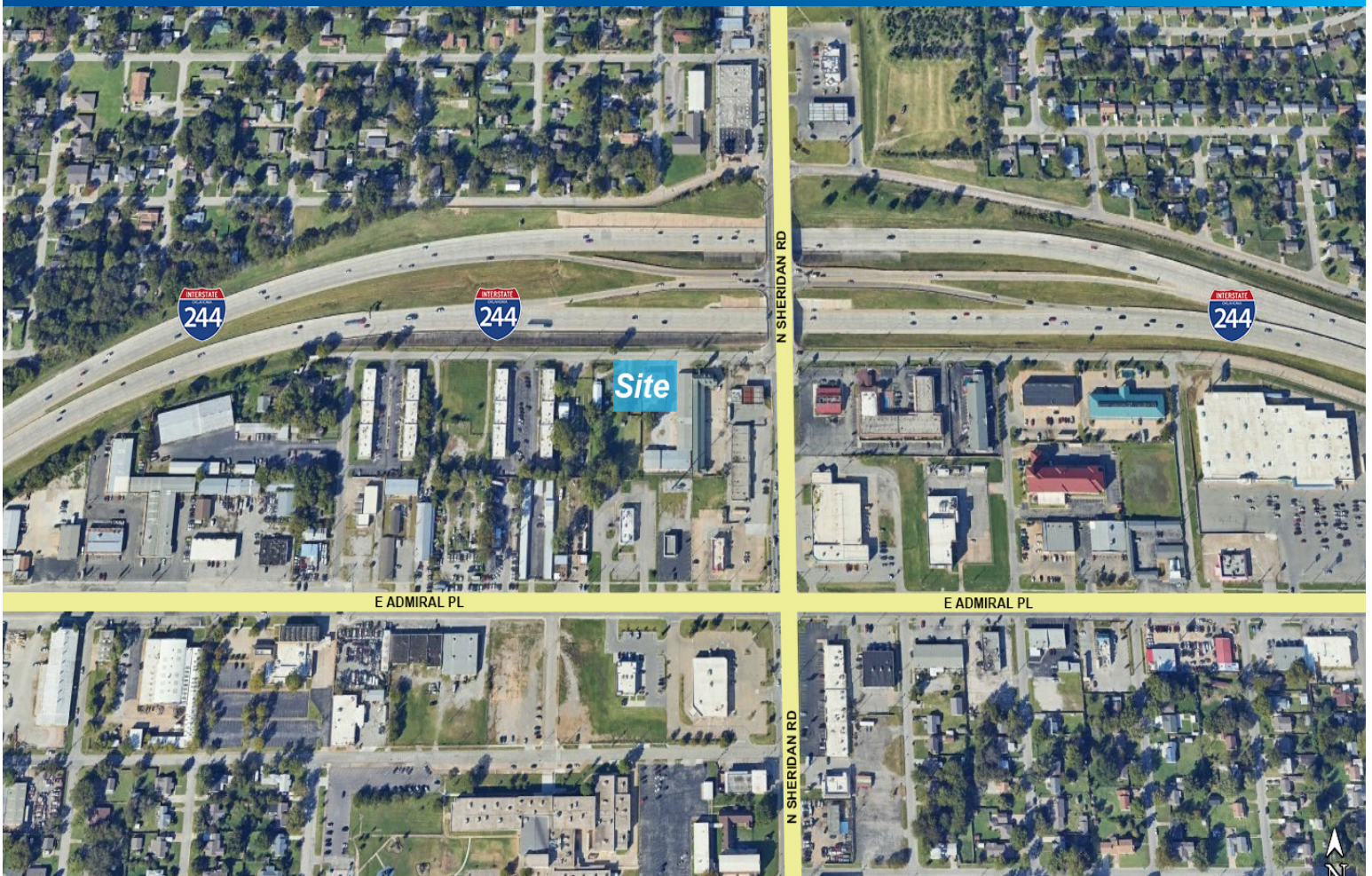
This material is provided for information purposes only. It is from sources believed to be reliable. However, Wiggin Properties makes no warranties or representations, expressed or implied, as to the accuracy or sufficiency of the information. It is presented subject to errors, omissions, changes or withdrawal without notice. Square footage is provided by the local County Assessor or the Owner. Photos and graphics with copyrights by Costar, Google, Wiggin Properties and independent contractors are used with permission.

Industrial Space For Lease

6408 & 6410 E Archer St

Tulsa, OK 74115

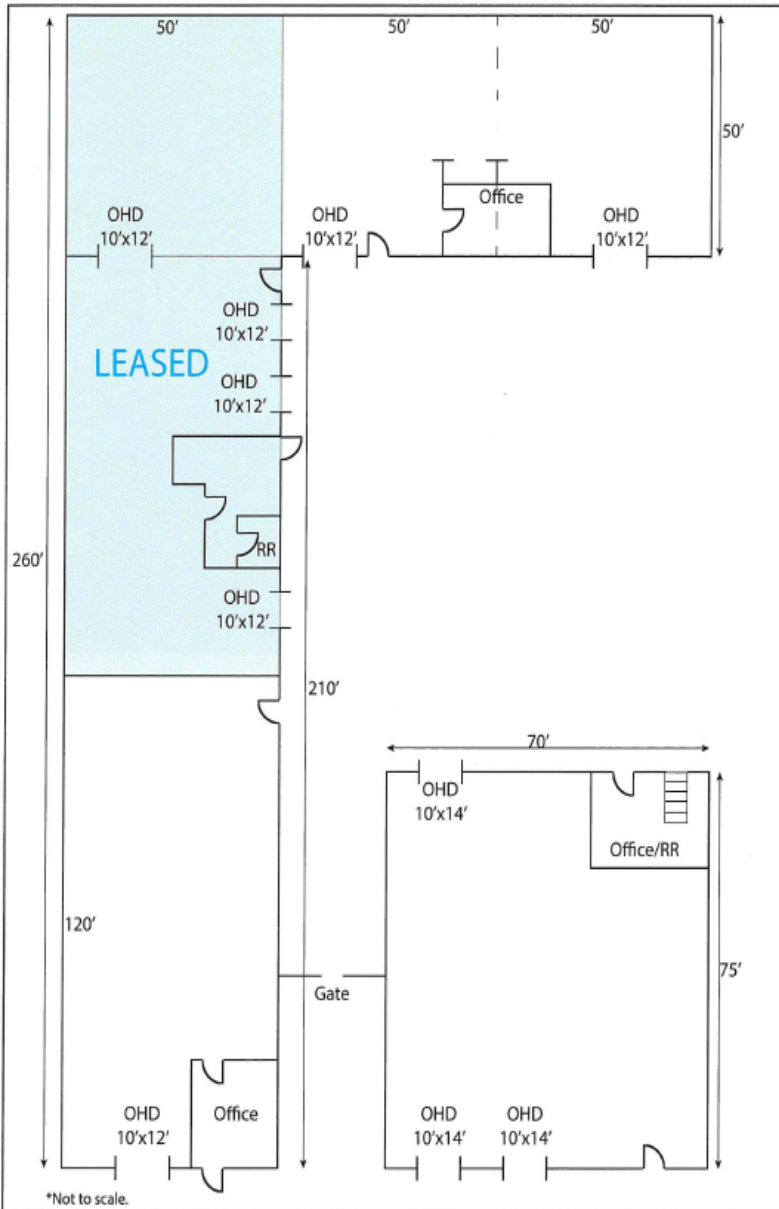
WIGGIN
PROPERTIES, LLC



Call Paul Bush at **918.287.7825**

pbush@wiginprop.com | wiginprop.com

This material is provided for information purposes only. It is from sources believed to be reliable. However, Wiggin Properties makes no warranties or representations, expressed or implied, as to the accuracy or sufficiency of the information. It is presented subject to errors, omissions, changes or withdrawal without notice. Square footage is provided by the local County Assessor or the Owner. Photos and graphics with copyrights by Costar, Google, Wiggin Properties and independent contractors are used with permission.



Availability:

Space 1

- 6000 sf
- Reception
- Bathroom
- 15' Center Clear Height
- 10' Side Clear Height
- One (1) Roll-up Door

Space 2 & 3

- 2500 sf or 5000 sf (Can be demised into 2500 sf spaces)
- New Lighting
- Renovated Bathroom
- Added Electricity

Space 4

- 5250 sf
- 20' Ceiling Heights
- Three (3) 16' x 12' Roll-up Doors
- Fully Insulated
- Additional HVAC
- Upstairs One (1) Bedroom Apartment

Call Paul Bush at **918.287.7825**

pbush@wiginprop.com | wiginprop.com