



Accelerating success.



Retail For Lease

1231 West 9000 South West Jordan, UT

Property Information

- Suite E (Back Unit): 2,290 SF
- Access from 9000 South
- 3 minutes from I-15
- Available immediately
- **Lease Rate, Suite E: \$12.00 SF/NNN**
- **NNN Estimated at \$5.20 PSF**

Spencer Croshaw

Senior Vice President
+1 801 702 4689
spencer.croshaw@colliers.com

Colliers

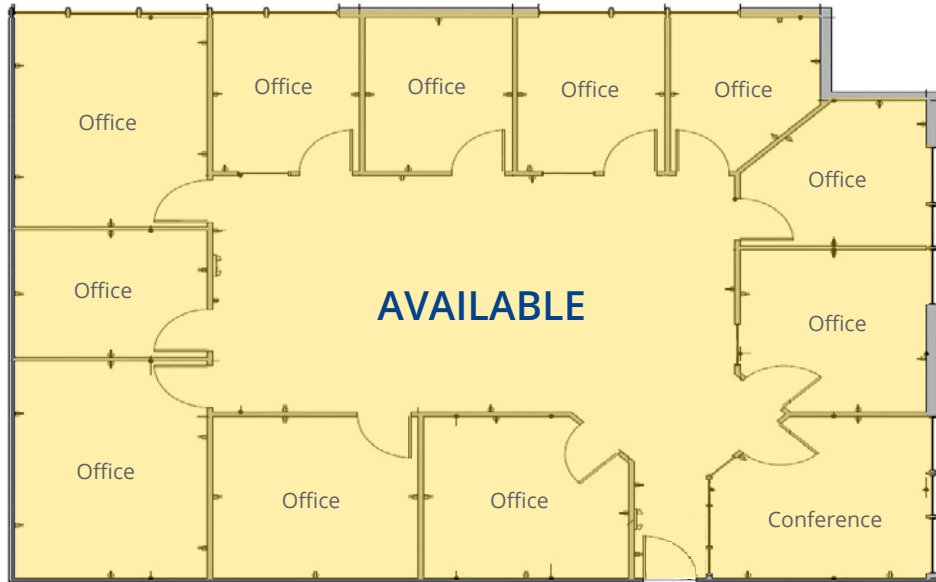
2100 Pleasant Grove Blvd., Suite 200
Pleasant Grove, UT 84062
Main: +1 801 947 8300
colliers.com

Accelerating success.

Floorplan

Suite E

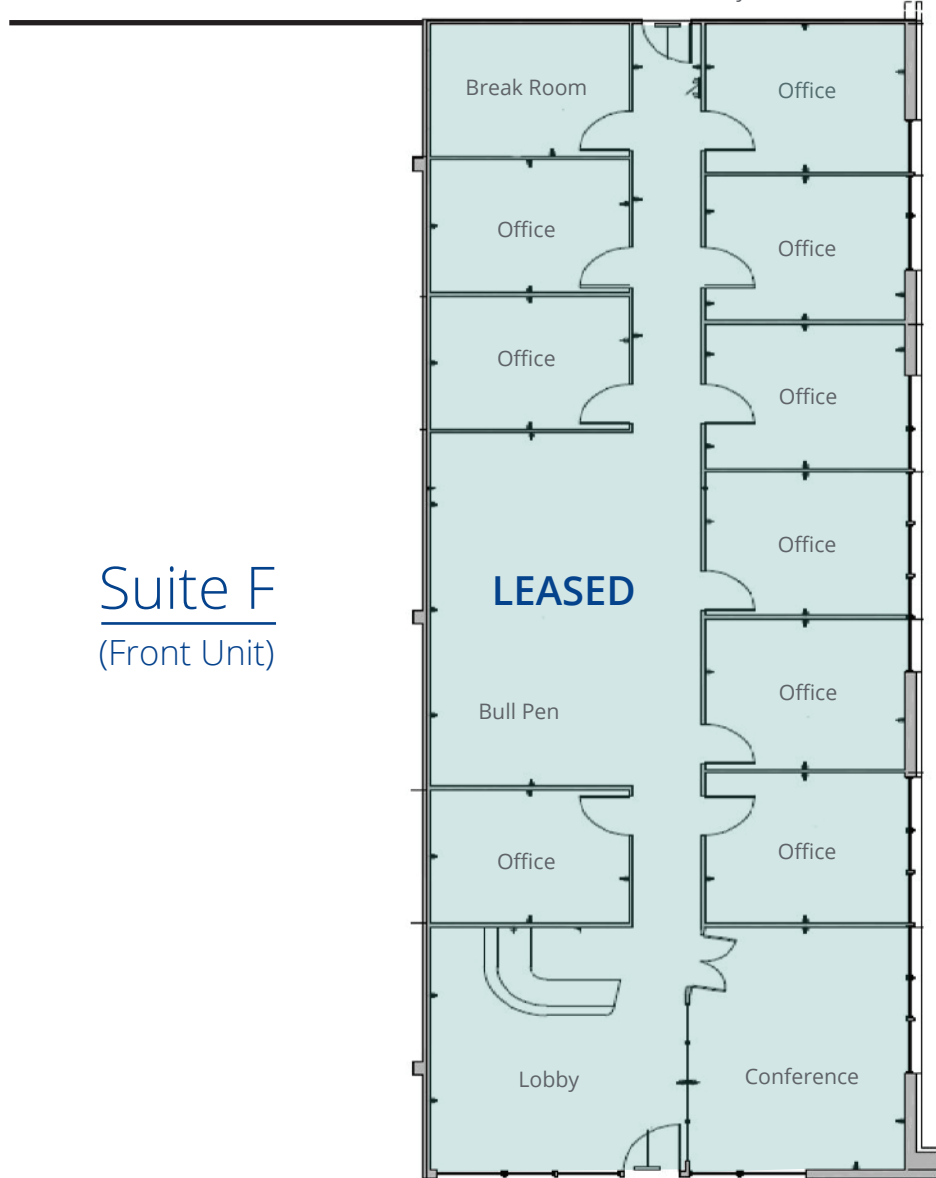
(Back Unit - 2,290 SF)



Common Hallway

Suite F

(Front Unit)





Colliers

2100 Pleasant Grove Blvd., Suite 200
Pleasant Grove, UT 84062
Main: +1 801 947 8300
colliers.com

Spencer Croshaw

Senior Vice President
+1 801 702 4689
spencer.croshaw@colliers.com

This document has been prepared by Colliers International for advertising and general information only. Colliers International makes no guarantees, representations or warranties of any kind, expressed or implied, regarding the information including, but not limited to, warranties of content, accuracy and reliability. Any interested party should undertake their own inquiries as to the accuracy of the information. Colliers International excludes unequivocally all inferred or implied terms, conditions and warranties arising out of this document and excludes all liability for loss and damages arising there from. This publication is the copyrighted property of Colliers International and/or its licensor(s). ©2025. All rights reserved.