



Industrial Space For Lease
2044 West 2425 South, Suite A
Woods Cross, Utah 84087

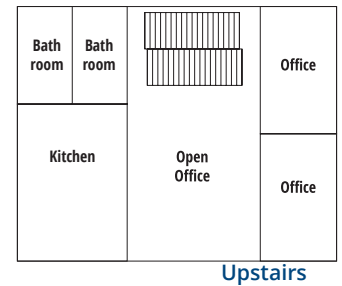
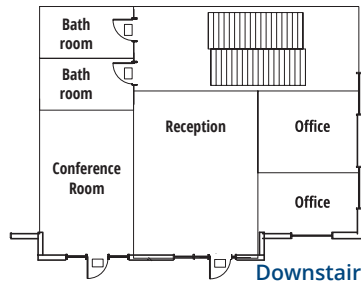
Property Highlights

- 21,620 SF Available
 - 3,240 SF two story Office (1,620 SF each floor)
 - 18,380 SF Warehouse
- Loading: 4 (9'x10') dock high doors
 2 (14'x16') grade level doors
- 28' Clear Height
- ESFR Fire Suppression
- 400 amps, 480 volt, 3-phase power
- Improved Yard
- Zoned I-1 (light industrial) Easy access to I-15, 1-215, Legacy Highway and Redwood Road

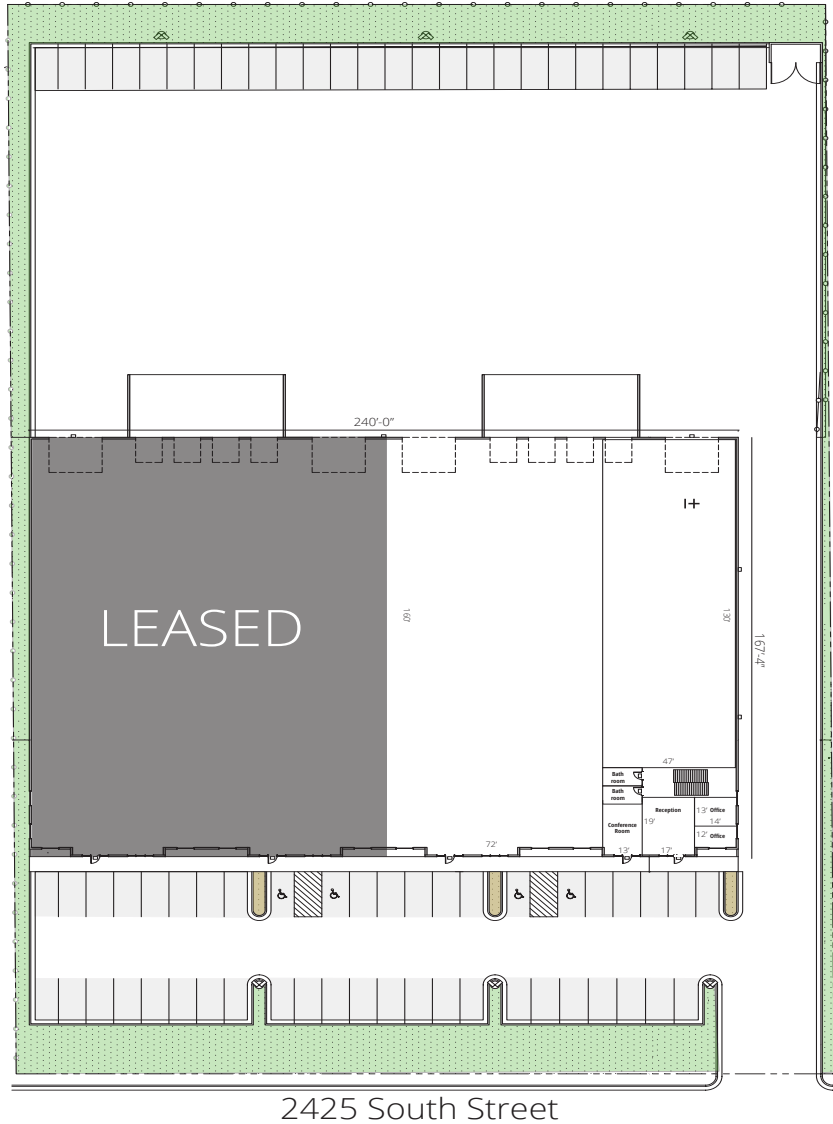


Industrial Space For Lease

2044 West 2425 South, Suite A
Woods Cross, Utah 84087



Site Plan



Colliers
111 S. Main St., Suite 2200
Salt Lake City, UT 84111
Main: +1 801 947 8300
colliers.com

Tom Freeman, SIOR
Vice Chair
+1 801 947 8309
tom.freeman@colliers.com

Jeremy Jensen, SIOR, CCIM
Executive Vice President
+1 801 441 1207
jeremy.jensen@colliers.com

Travis Healey, SIOR
Vice Chair
+1 801 947 8335
travis.healey@colliers.com

Jeremy Terry
Vice President
+1 801 947 8346
jeremy.terry@colliers.com

This document has been prepared by Colliers International for advertising and general information only. Colliers International makes no guarantees, representations or warranties of any kind, expressed or implied, regarding the information including, but not limited to, warranties of content, accuracy and reliability. Any interested party should undertake their own inquiries as to the accuracy of the information. Colliers International excludes unequivocally all inferred or implied terms, conditions and warranties arising out of this document and excludes all liability for loss and damages arising there from. This publication is the copyrighted property of Colliers International and/or its licensor(s). ©2024. All rights reserved.