

OFFICE SPACE FOR LEASE

3057 Lorna Road ♦ Hoover, AL ♦ 35216 ♦ Jefferson County



OFFICE SIZES: 2,500—8,400 +/- SF / ASKING PRICE: \$16.50 SF

Mark Dinan, MBA, CCIM

(c) 205-980-3434

(c) 205-243-3434

markdinan@bellsouth.net

MARK DINAN
Commercial & Investment Real Estate



*All Information furnished regarding property sale, rental, or financing is from sources deemed reliable, but is not guaranteed.

LOCATION DETAILS

3057 Lorna Road ♦ Hoover, AL ♦ 35216 ♦ Jefferson County

- ♦ Georgetown Place Office Building
- ♦ Office Sizes 2,500 sf—8,400 sf available.
- ♦ Ideal Use: Office, Professional, Medical
- ♦ Like New Construction, Built 1989
- ♦ Easy Convenient Access to I-65, Hwy 31 and Lorna Rd.
- ♦ Recent renovations
- ♦ Very Well Maintained; Move In Ready Condition
- ♦ Highly Visible Signage and Exposure
- ♦ Near Major Retailers and Businesses Including Publix, banks, Archie's, Shipley Donuts and Starbucks
- ♦ Abundant Curb Side Level Parking
- ♦ Attractive and Appealing Architecture and Landscaping
- ♦ Excellent Value , Flexible Leases.



Mark Dinan, MBA, CCIM

(o) 205-980-3434

(c) 205-243-3434

markdinan@bellsouth.net

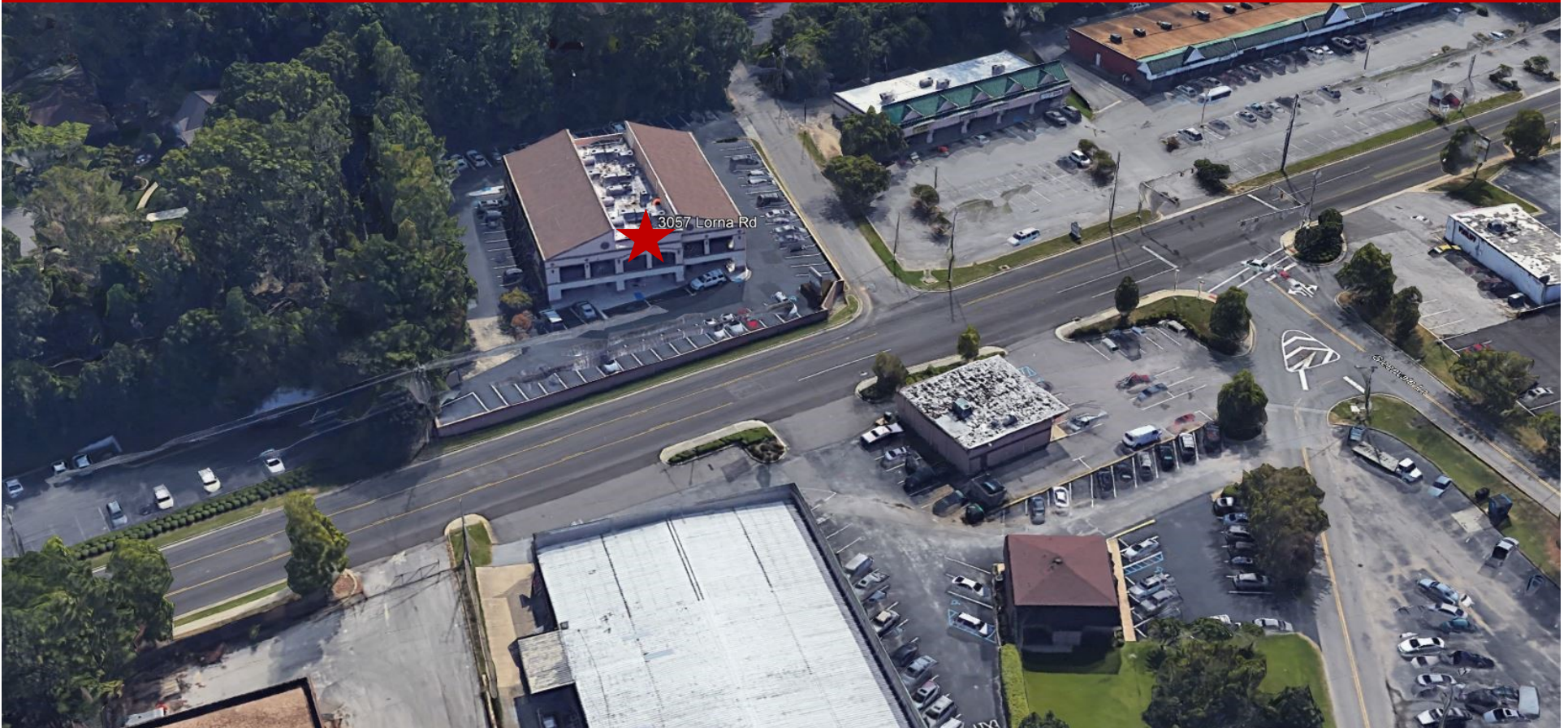
MARK DINAN
Commercial & Investment Real Estate



*All Information furnished regarding property sale, rental, or financing is from sources deemed reliable, but is not guaranteed.

AERIAL PHOTO

3057 Lorna Road ♦ Hoover, AL ♦ 35216 ♦ Jefferson County



Mark Dinan, MBA, CCIM

(c) 205-980-3434

(c) 205-243-3434

markdinan@bellsouth.net

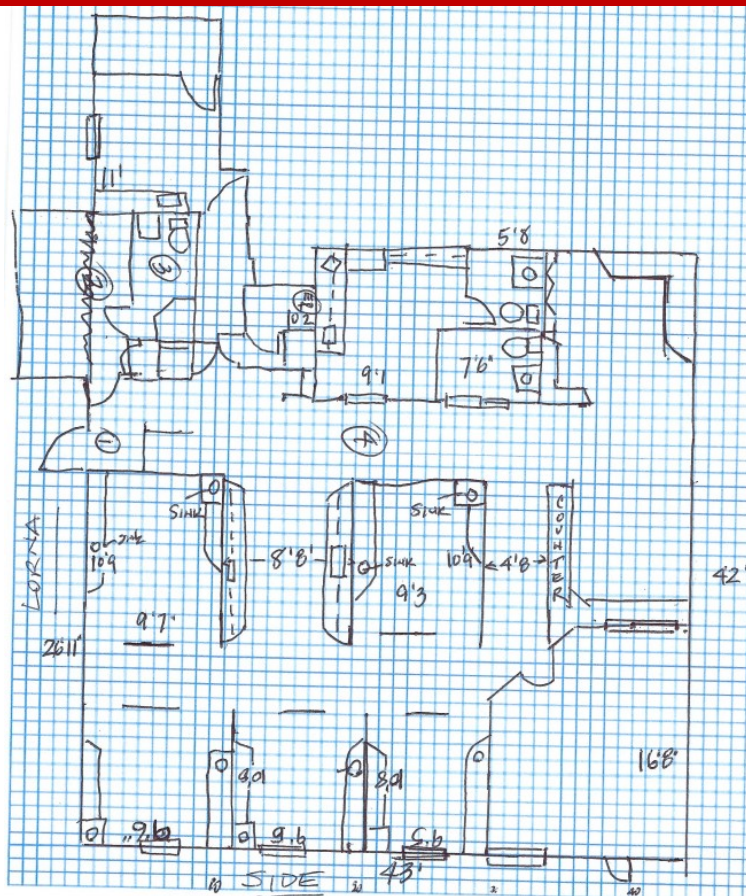
MARK DINAN
Commercial & Investment Real Estate



*All Information furnished regarding property sale, rental, or financing is from sources deemed reliable, but is not guaranteed.

FIRST FLOOR AVAILABLE SUITES

3057 Lorna Road ♦ Hoover, AL ♦ 35226 ♦ Jefferson County



Mark Dinan, MBA, CCIM

(o) 205-980-3434

(c) 205-243-3434

markdinan@bellsouth.net

MARK DINAN
Commercial & Investment Real Estate



*All Information furnished regarding property sale, rental, or financing is from sources deemed reliable, but is not guaranteed.

3057 Lorna Road ♦ Hoover, AL ♦ 35216 ♦ Jefferson County



205-980-3434

*All Information furnished regarding property sale, rental, or financing is from sources deemed reliable, but is not guaranteed.

ATTRACTIONS MAP

3057 Lorna Road ♦ Hoover, AL ♦ 35226 ♦ Jefferson County



Mark Dinan, MBA, CCIM

(c) 205-980-3434

(c) 205-243-3434

markdinan@bellsouth.net

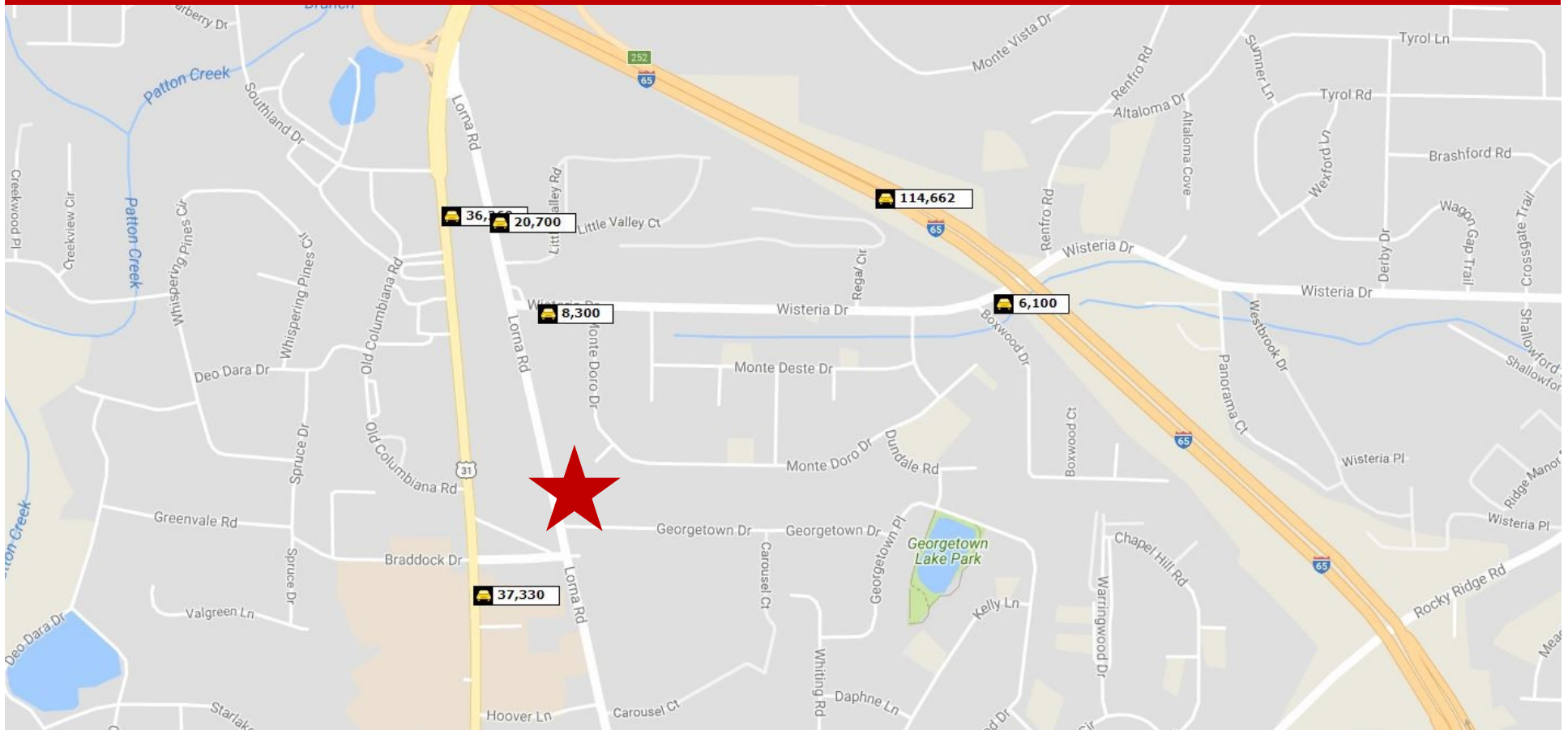
MARK DINAN
Commercial & Investment Real Estate



*All Information furnished regarding property sale, rental, or financing is from sources deemed reliable, but is not guaranteed.

TRAFFIC COUNTS

3057 Lorna Road ♦ Hoover, AL ♦ 35216 ♦ Jefferson County



Mark Dinan, MBA, CCIM

(c) 205-980-3434

(c) 205-243-3434

markdinan@bellsouth.net

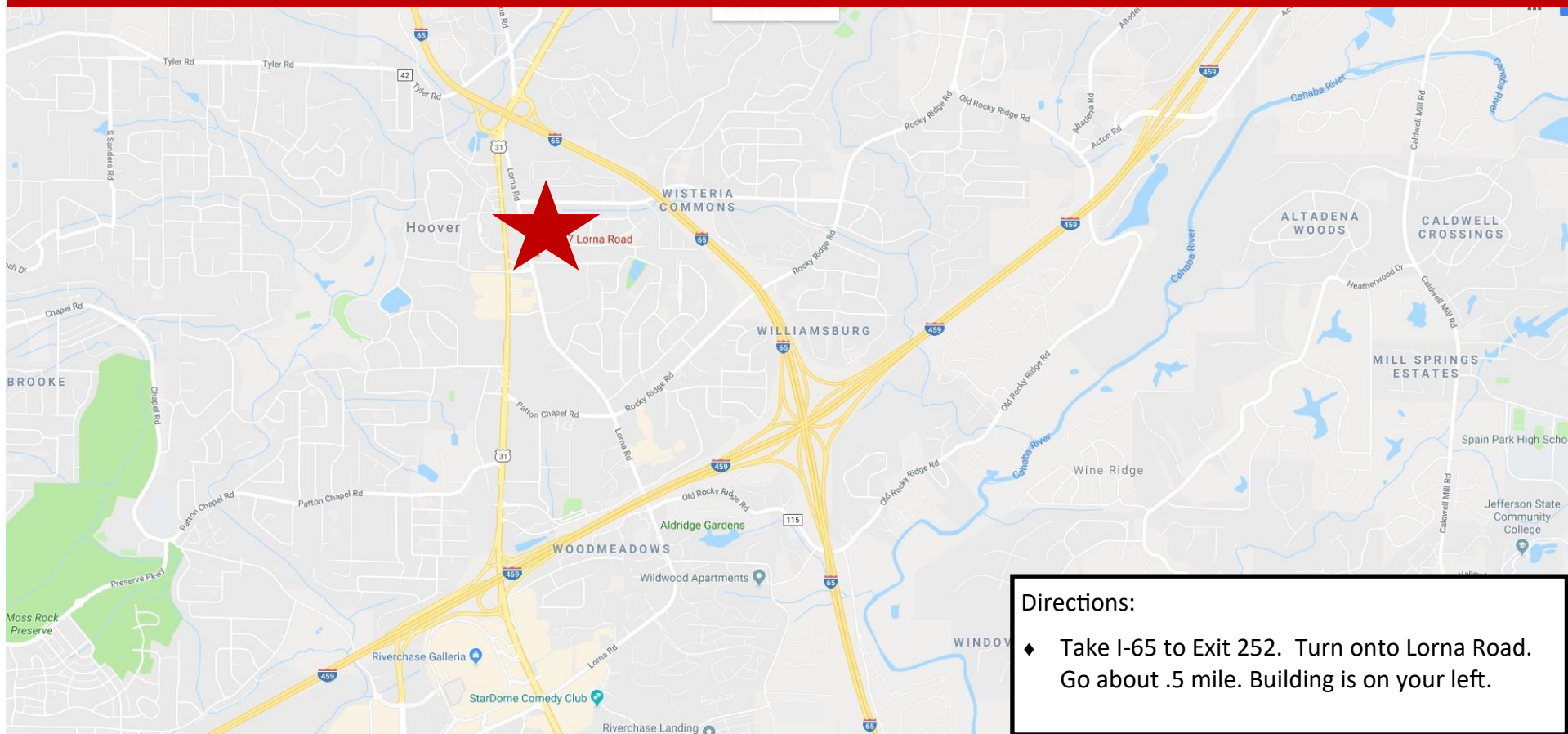
MARK DINAN
Commercial & Investment Real Estate



*All Information furnished regarding property sale, rental, or financing is from sources deemed reliable, but is not guaranteed.

LOCATION MAP

3057 Lorna Road ♦ Hoover, AL ♦ 35216 ♦ Jefferson County



Directions:

- ♦ Take I-65 to Exit 252. Turn onto Lorna Road. Go about .5 mile. Building is on your left.

Mark Dinan, MBA, CCIM

(o) 205-980-3434

(c) 205-243-3434

markdinan@bellsouth.net

MARK DINAN
Commercial & Investment Real Estate



*All Information furnished regarding property sale, rental, or financing is from sources deemed reliable, but is not guaranteed.

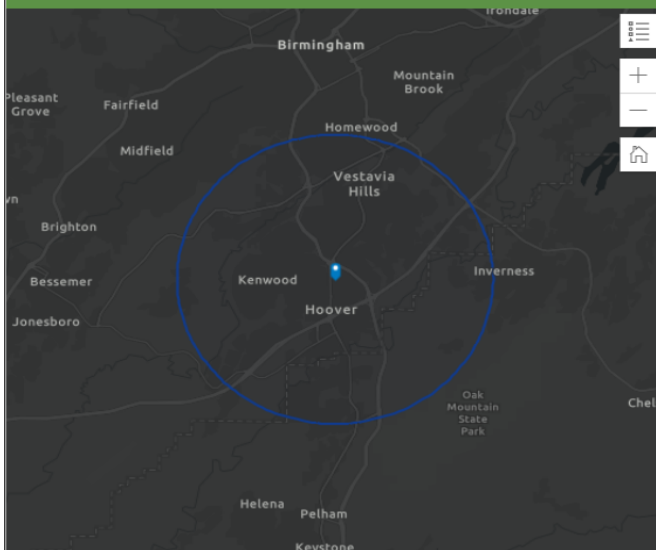
DEMOGRAPHICS

3057 Lorna Road ♦ Hoover, AL ♦ 35216 ♦ Jefferson County

DEMOGRAPHIC PROFILE

3057 Lorna Rd, Hoover, Alabama, 35216

Ring of 5 miles



Source: This infographic contains data provided by Esri (2023, 2028).
© 2023 Esri

EDUCATION



No High School Diploma



13.0%
High School Graduate



21.0%
Some College/
Associate's Degree



63.1%
Bachelor's/Grad/
Prof Degree

EMPLOYMENT



White Collar



Blue Collar



Services



Unemployment Rate

KEY FACTS

145,172

Population

38.4

Median Age

60,079

Households

\$68,874

Median Disposable Income

INCOME



\$85,158

Median Household Income



\$54,597

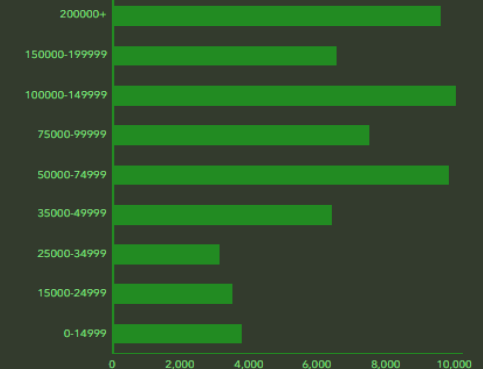
Per Capita Income



\$208,880

Median Net Worth

HOUSEHOLD INCOME (\$)



Mark Dinan, MBA, CCIM

(o) 205-980-3434

(c) 205-243-3434

markdinan@bellsouth.net

MARK DINAN
Commercial & Investment Real Estate



*All Information furnished regarding property sale, rental, or financing is from sources deemed reliable, but is not guaranteed.