

# The Edgewater Building - 600 S Magnolia Avenue

Located in the heart of Tampa's Hyde Park Neighborhood, the Edgewater Building is a three story, 20,000 SF office building built in 1924. Originally constructed as the Hotel Cargyle, the building was converted to office in 1994. The Edgewater Building is now a historic icon located only one block from Bayshore Boulevard.



## For Lease Contact:

Allie Kessler

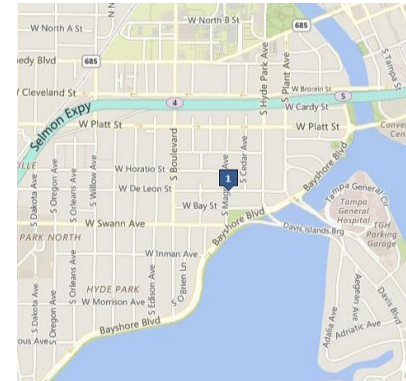
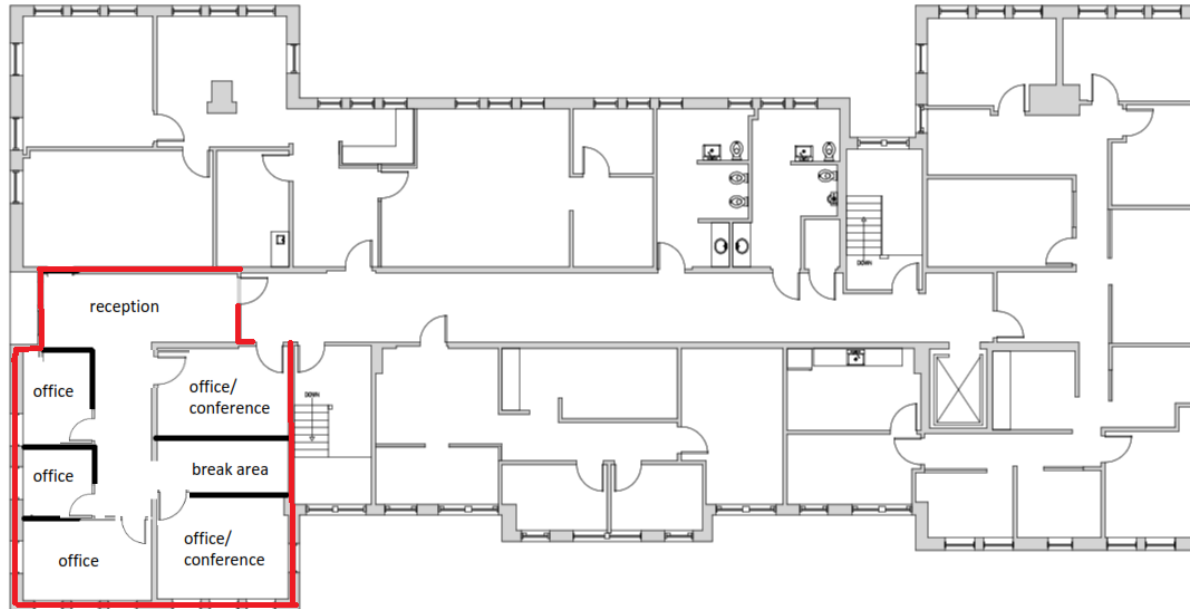
813.766.1987

[allie@bayvilladevelopers.com](mailto:allie@bayvilladevelopers.com)



# The Edgewater Building - 600 S Magnolia Avenue

Suite 310 – 1,390 SF



## For Lease Contact:

Allie Kessler

813.766.1987

[allie@bayvilladevelopers.com](mailto:allie@bayvilladevelopers.com)

