

CONTINENTAL COMMONS

32,396 SQ. FT. AVAILABLE

(DIVISIBLE TO 14,951 SF)

5109 W. Lake Street, Melrose Park, IL

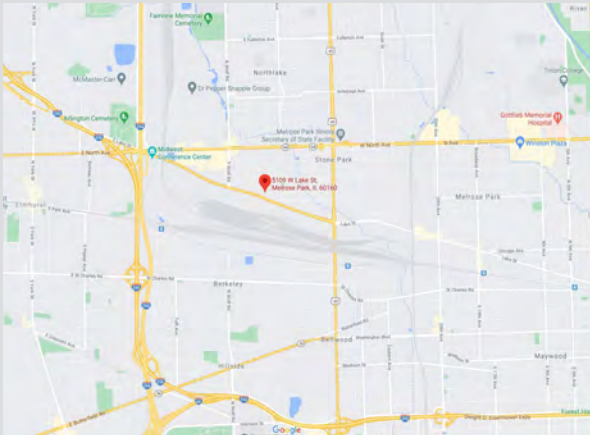


PROPERTY OVERVIEW

dalfen.com

CONTINENTAL COMMONS

5109 W. Lake St, Melrose Park, IL



86,644 SQ. FT.

Total Building Size

3.04 acres

LEASING



Al Caruana

al.caruana@cushwake.com

847.720.1326

Mike Labek

michael.labek@cushwake.com

312.470.2309

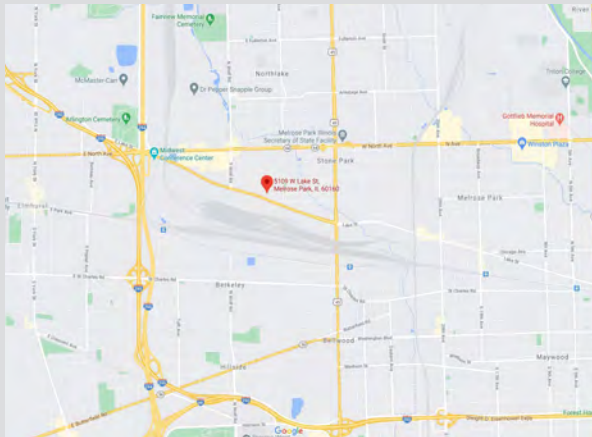


PROPERTY OVERVIEW

dalfen.com

CONTINENTAL COMMONS

5109 W. Lake St, Melrose Park, IL



14,951 SQ. FT.

Office SF: 1,521 (approx)

Office %: 10 (approx)

LEASING



Al Caruana

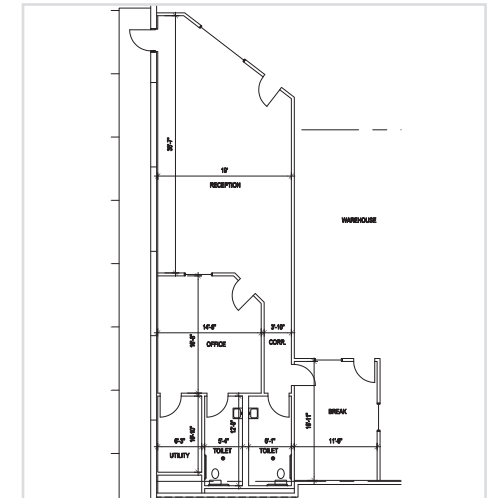
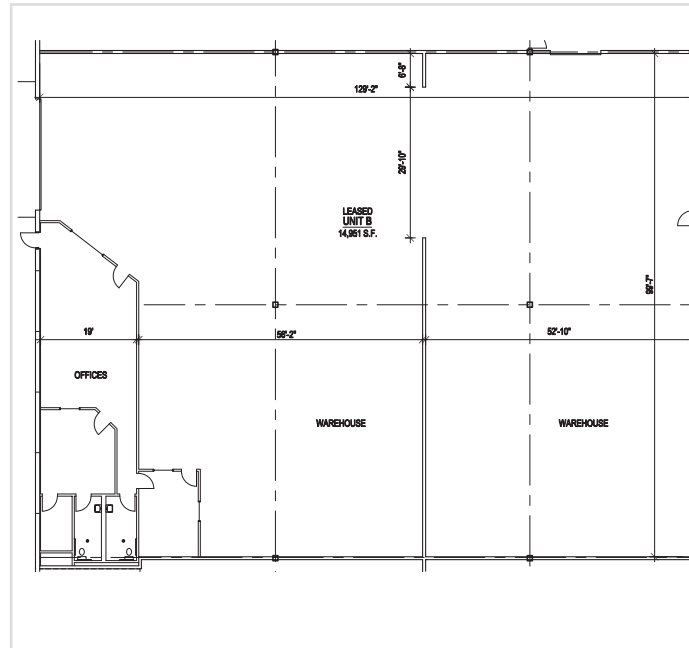
al.caruana@cushwake.com

847.720.1326

Mike Labek

michael.labek@cushwake.com

312.470.2309



Existing Office 1,521 SF

UNIT B - 14,951 SF



14,951 sq. ft.



F, Light Manufacturing



24' clear height



Ample



Pre-cast construction



ESFR Fire System



400 Amps @ 480 Volts



LED lighting



1 – oversized drive-in door
6 dock high doors with levelers
(common interior docks)



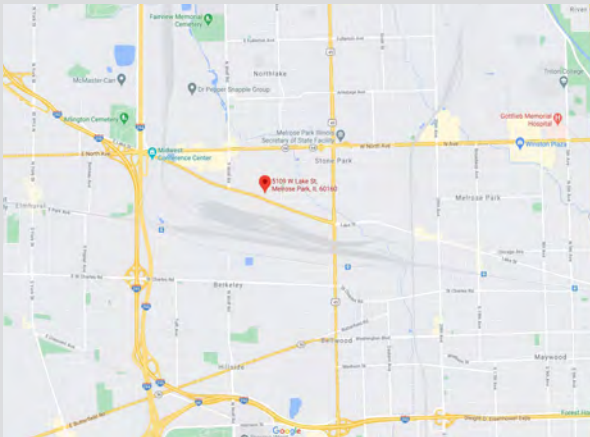
Subject to Offer

PROPERTY OVERVIEW

dalfen.com

CONTINENTAL COMMONS

5109 W. Lake St, Melrose Park, IL



17,445 SQ. FT.

Office SF: 1,500 (approx)

Office %: 9 (approx)

LEASING



Al Caruana

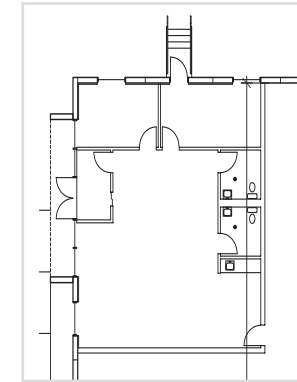
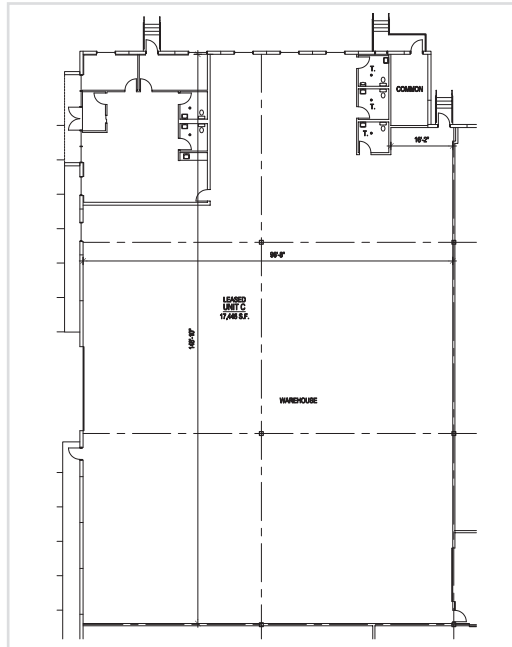
al.caruana@cushwake.com

847.720.1326

Mike Labek

michael.labek@cushwake.com

312.470.2309



Existing Office 1,500 SF (approx)

UNIT C - 17,445 SF



17,445 sq. ft.



24' clear height



Pre-cast construction



400 Amps @ 480 Volts



1 – oversized drive-in door
6 dock high doors with levelers
(common interior docks)



F, Light Manufacturing



Ample



ESFR Fire System



LED lighting

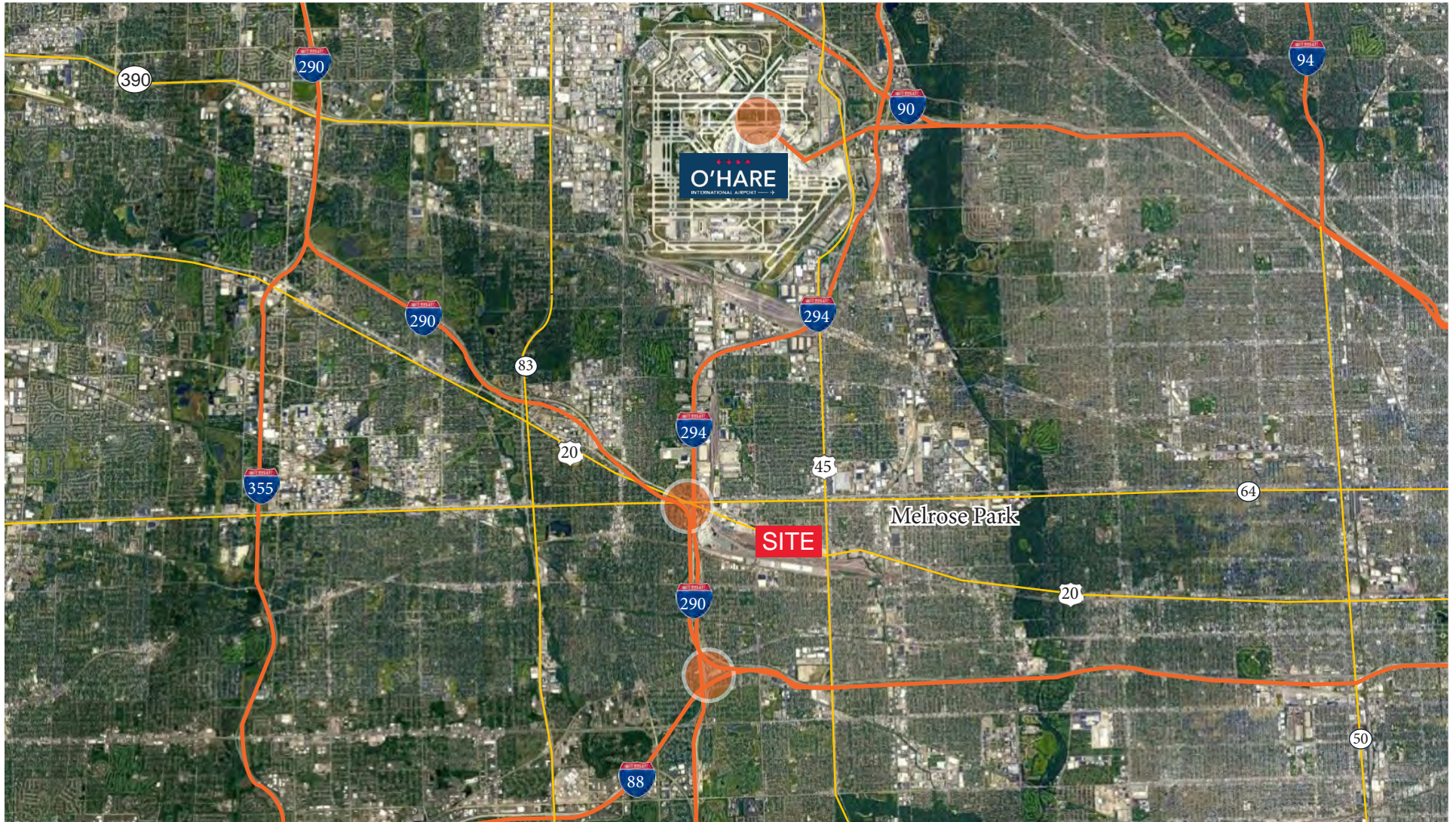


Subject to Offer

AREA OVERVIEW

CONTINENTAL COMMONS

5109 W. Lake Street, Melrose Park, IL



DRIVE TIMES

I-294

🚗 1.2 miles ⌚ 4 min.

I-88

🚗 10 miles ⌚ 15 min.

O'Hare Int'l Airport

🚗 8.5 miles ⌚ 15 min.

I-55

🚗 13 miles ⌚ 21 min.

Chicago

🚗 16 miles ⌚ 30 min.



Dalfen

INDUSTRIAL

dalfen.com

DALLAS | MONTREAL | DENVER | CINCINNATI | ORLANDO | ATLANTA |
SAN FRANCISCO | HOUSTON | RALEIGH | CHICAGO | PHOENIX | OAKLAND