

# FOR SALE

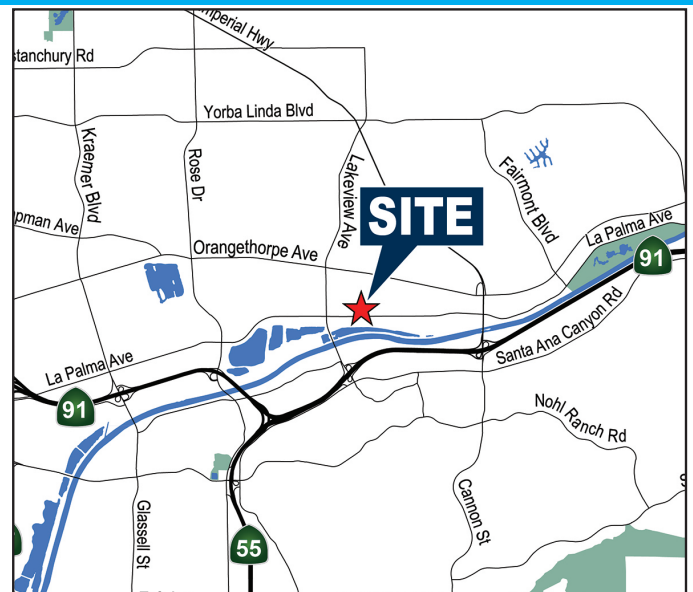
# ±3,479 SF

4887 EAST LA PALMA | SUITE 702 | ANAHEIM | CA



## PROPERTY FEATURES

- Major Street Frontage
- High Image Building
- 3:1,000 Parking Ratio (In Common)
- Reception and 3 Private Offices
- One Restroom
- Minimum 24' Warehouse Clearance
- One (1) Ground Level Door
- 100A, 120/208V 3 Phase Power (Verify)
- Excellent Access to 91 and 55 Freeways
- Low monthly association dues (Approx. \$.27 PSF)



**JACK FARIS, SIOR**  
Senior Vice President | Partner  
License #00912766  
(714) 935.2318  
Jfaris@voitco.com



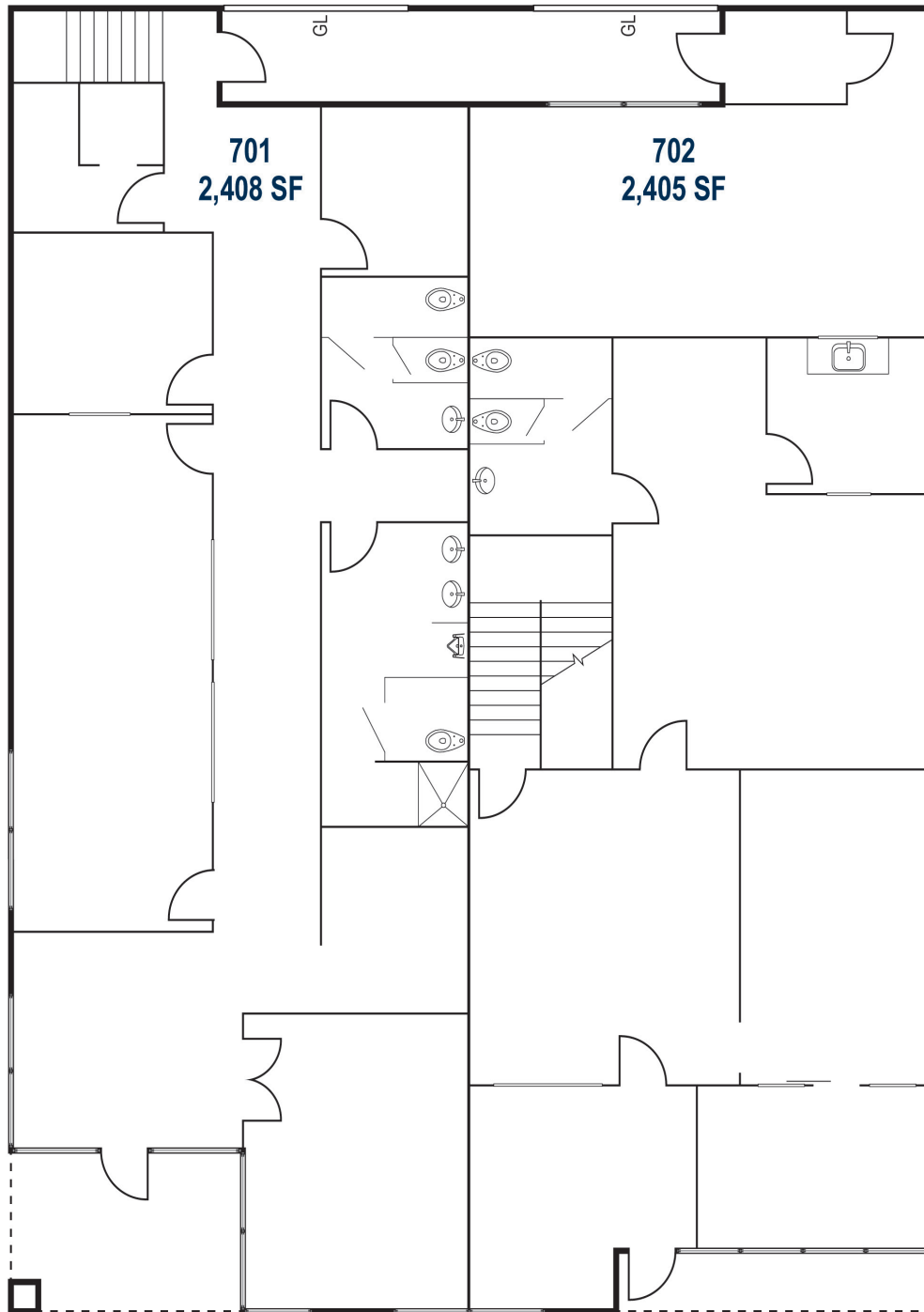
**DREW ZAVALA**  
Associate  
License #02173846  
(949) 263-5314  
Dzavala@voitco.com

**Voit**  
REAL ESTATE SERVICES

2020 Main Street, Suite 100 | Irvine, California 92614 | (949) 851-5100 | (949) 261-9092 fax | Lic #01991785 | [www.VoitCo.com](http://www.VoitCo.com)

The information contained herein has been obtained from sources we deem reliable. While we have no reason to doubt its accuracy, we do not guarantee it. Licensed as Real Estate Salespersons by the DRE. ©2024 Voit Real Estate

## FIRST FLOOR



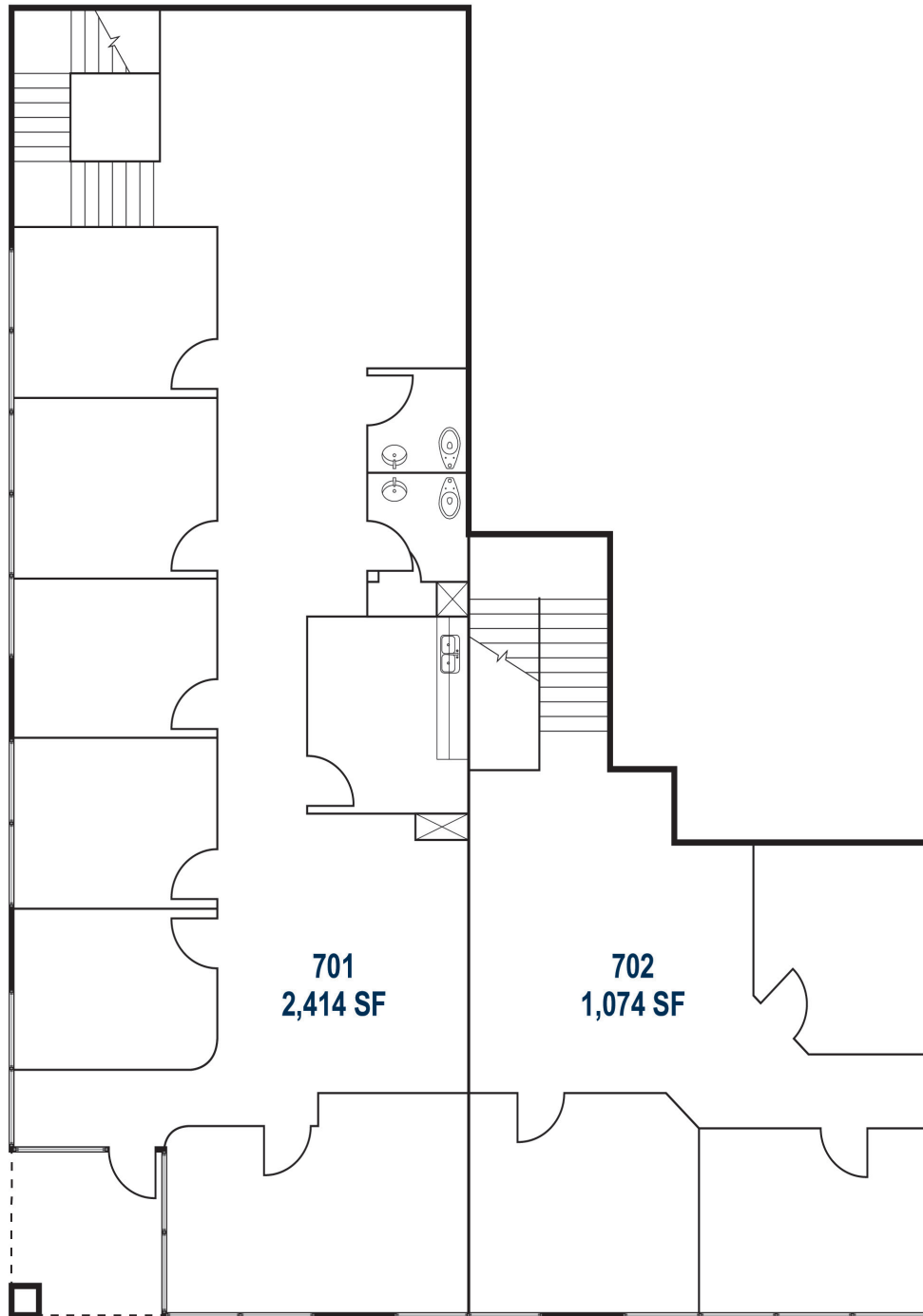
**JACK FARIS, SIOR**  
Senior Vice President | Partner  
License #00912766  
(714) 935.2318  
Jfaris@voitco.com



**DREW ZAVALA**  
Associate  
License #02173846  
(949) 263-5314  
Dzavala@voitco.com

**Voit**  
REAL ESTATE SERVICES

## SECOND FLOOR



**JACK FARIS, SIOR**  
Senior Vice President | Partner  
License #00912766  
(714) 935.2318  
Jfaris@voitco.com



**DREW ZAVALA**  
Associate  
License #02173846  
(949) 263-5314  
Dzavala@voitco.com

**Voit**  
REAL ESTATE SERVICES