

524 S. Main St

Ann Arbor, MI 48104



Contact Us

Tim Guest

Senior Associate

+1 248 936 6836

tim.guest@cbre.com

524 S. Main St
Ann Arbor, MI 48104

For Lease

Property Overview

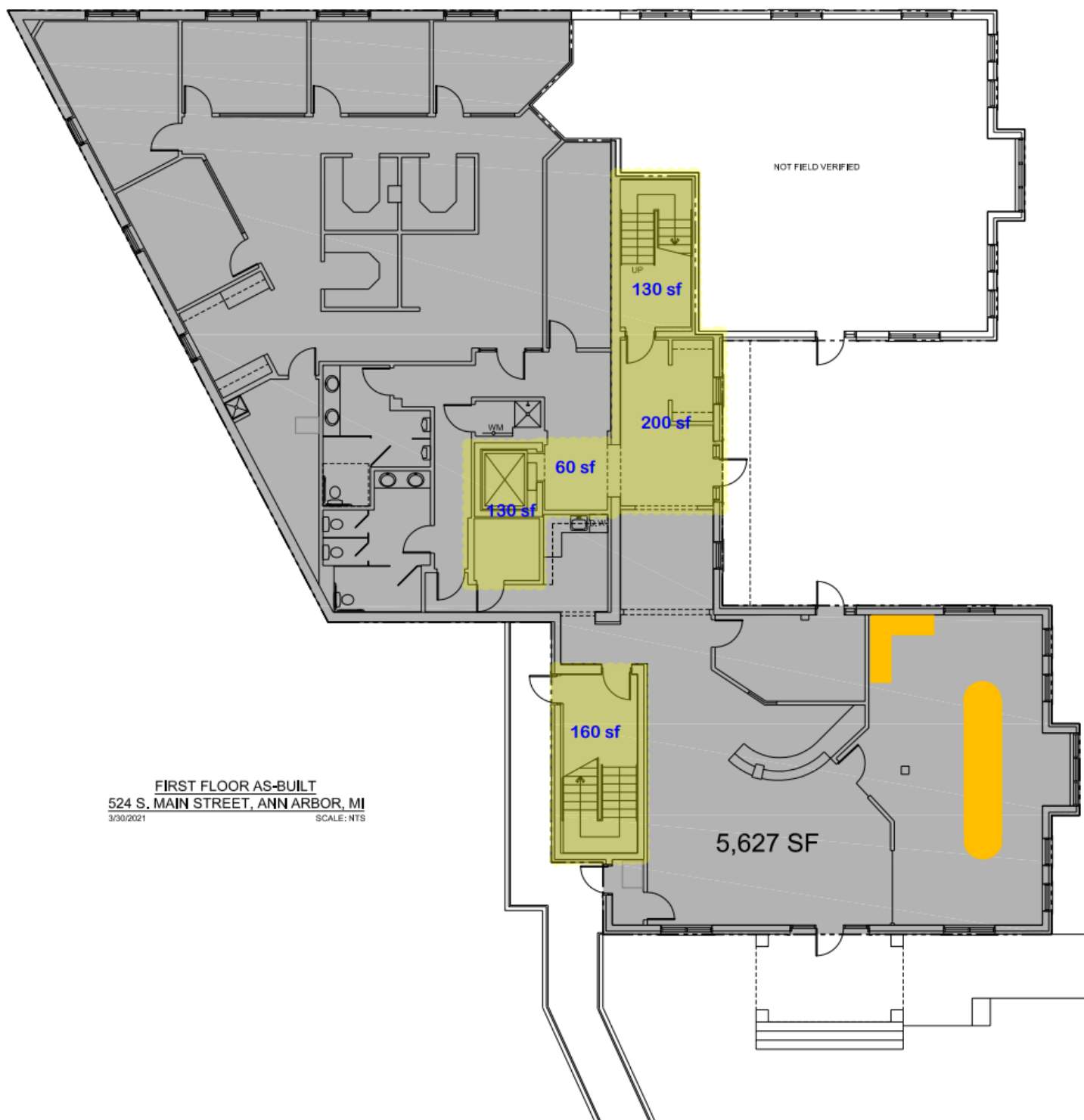
Property Address	524 S. Main St.
Building Size SF	18,618 SF
Available SF	1st Floor: 5,627 SF 2nd Floor: 2,130 SF
Typical Floor	6,206 SF
Land Acres	0.29 AC
Year Built	2000
Parking Ratio	1.93/1,000 SF

Property Details

- + Monument Signage
- + Onsite Parking
- + Walking Distance To Downtown



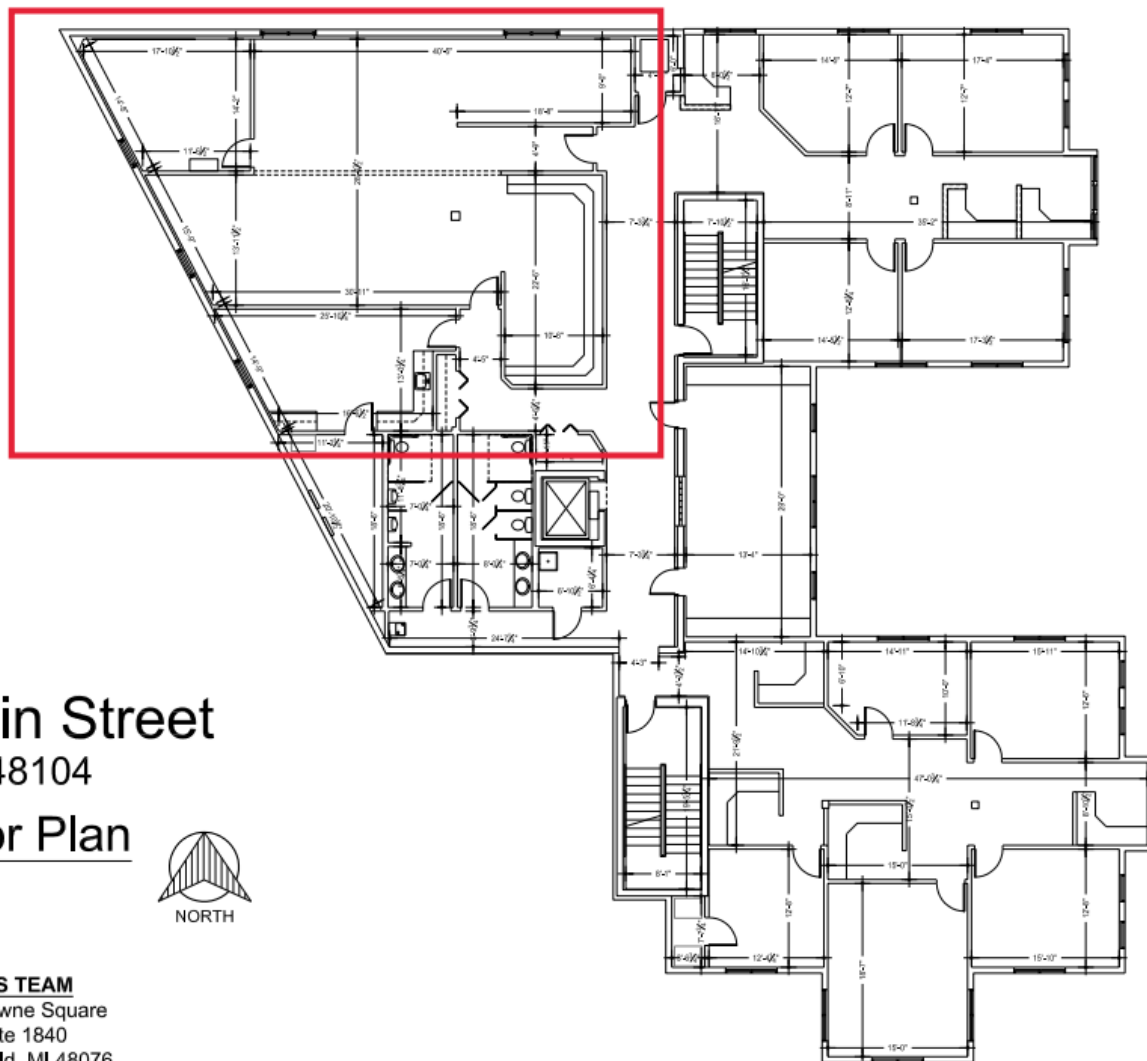
Floor Plan - 1st Floor



524 S. Main St
Ann Arbor, MI 48104

For Lease

Floor Plans - 2nd Floor



524 S. Main Street

Ann Arbor, MI 48104

Second Floor Plan

0 3' 6' 12' 24'



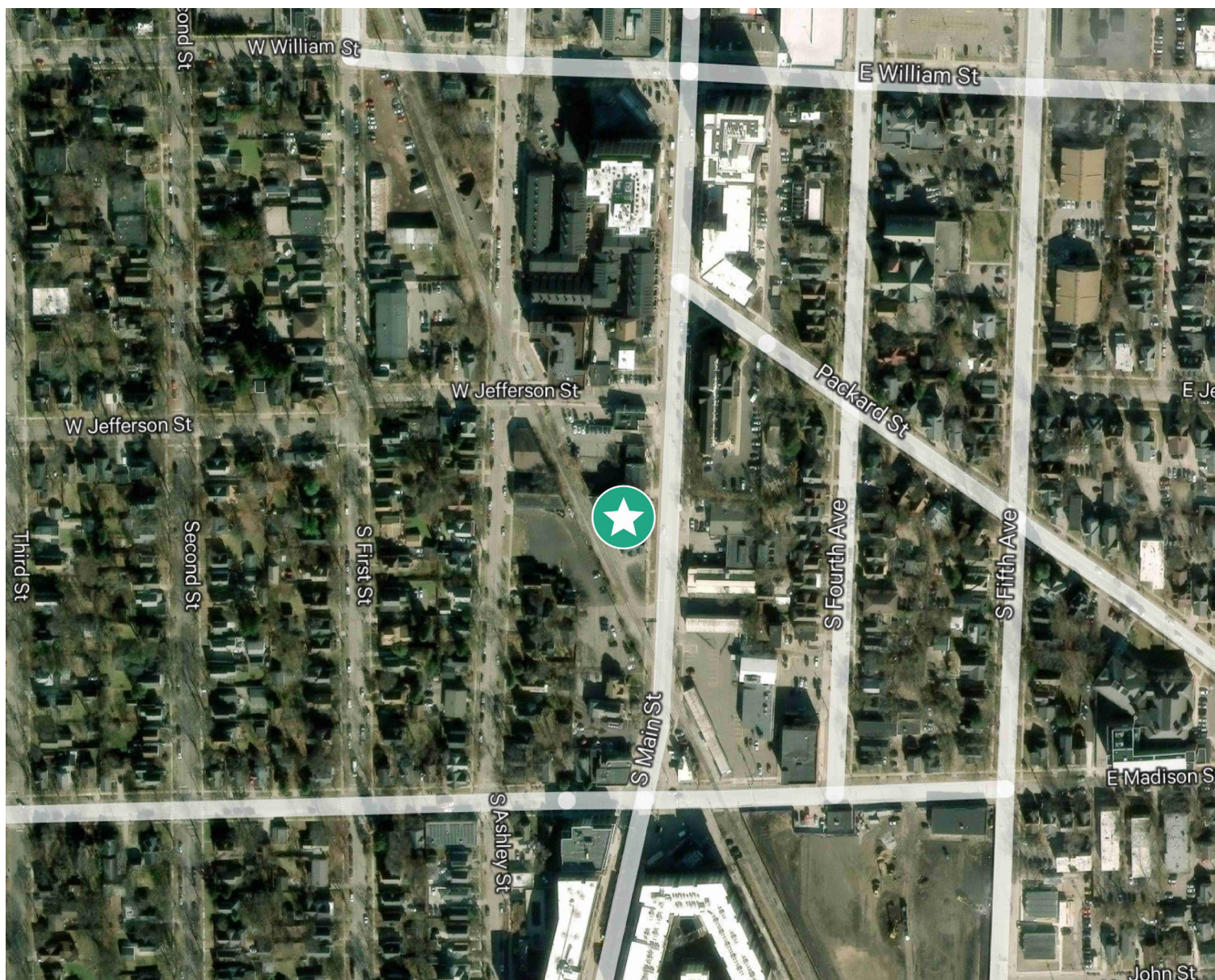
NCS TEAM
One Towne Square
Suite 1840
Southfield, MI 48076
Tel: 248-320-1921
www.ncs-team.com

CBRE

524 S. Main St
Ann Arbor, MI 48104

For Lease

Site Map



Contact Us

Tim Guest

Senior Associate

+1 248 936 6836

tim.guest@cbre.com

© 2025 CBRE, Inc. All rights reserved. This information has been obtained from sources believed reliable, but has not been verified for accuracy or completeness. You should conduct a careful, independent investigation of the property and verify all information. Any reliance on this information is solely at your own risk. CBRE and the CBRE logo are service marks of CBRE, Inc. All other marks displayed on this document are the property of their respective owners, and the use of such logos does not imply any affiliation with or endorsement of CBRE. Photos herein are the property of their respective owners. Use of these images without the express written consent of the owner is prohibited.

CBRE