

A PREMIER MULTI-TENANT FACILITY | FOR LEASE

# RIVERSIDE CORPORATE CENTRE

UNIT 121 - 11780 HAMMERSMITH WAY

RICHMOND, BC



## CONTACT:

### Noah Freedman

Associate Vice President  
+1 604 833 3274  
noah.freedman@cushwake.com

### Ron J Emerson

Personal Real Estate Corporation  
Vice President  
+1 604 608 5921  
ron.emerson@cushwake.com

### Graham Williams

Associate  
+1 604 837 1819  
graham.williams@cushwake.com



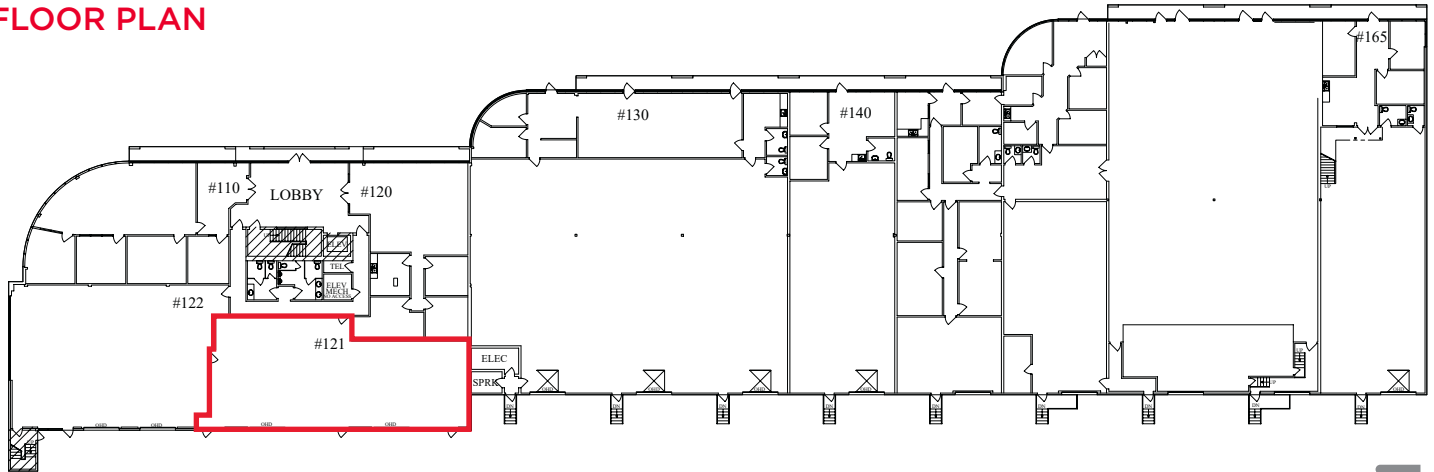
Suite 700 - 700 West Georgia Street  
PO Box 10023, Pacific Centre  
Vancouver, BC V7Y 1A1  
+1 604 683 3111

[cushmanwakefield.ca](http://cushmanwakefield.ca)



# UNIT 121 - 11780 HAMMERSMITH WAY | RICHMOND, BC

## FLOOR PLAN



MAIN FLOOR



## AVAILABLE AREA

Office Area **2,277 SF**

## BASIC RENT

Contact listing agent

## TAXES & OPERATING COSTS

**\$8.63 psf (2024)**

## AVAILABLE

Within 30 days notice

## COMMENTS

Offering a rare opportunity for a main floor office with impeccable modern amenities. Situated within minutes of restaurants, shopping, and banking facilities, this prime location provides excellent visibility and accessibility. With easy access to major transportation routes like Highway 99, Steveston Highway, and BC Transit, commuting to and from the centre is convenient for employees and clients alike.

## FEATURES



Abundant parking



Retail amenities close by



Excellent corporate identity



Transit oriented site

## Contact for more information:

### Noah Freedman

Associate Vice President  
+1 604 833 3274  
noah.freedman@cushwake.com

### Ron J Emerson

Personal Real Estate Corporation  
Vice President  
+1 604 608 5921  
ron.emerson@cushwake.com

### Graham Williams

Associate  
+1 604 837 1819  
graham.williams@cushwake.com

