

25900 ELEVEN MILE ROAD
SOUTHFIELD, MICHIGAN

OFFICE FOR SALE OR SUBLEASE
16,000 – 31,802 Square Feet Available



**SIGNATURE
ASSOCIATES**
KNOW SIGNATURE | KNOW RESULTS

ABC TECHNOLOGIES BUILDING



**VIEW
VIDEO**



PROPERTY FEATURES

- 16,000-31,802 square feet available for sublease
- 31,802 square feet available for sale
- Beautiful interior finishes with 10-foot exposed ceilings throughout
- Beautiful window lines
- Central location, easy access to all freeways
- Many amenities nearby
- Sublease through September 30, 2031
- Lease Rate: \$15.00/sq. ft. G+E
- Sale Price: Contact Broker



For more information, please contact:

JOHN BOYD
(248) 948 0102
bjoyd@signatureassociates.com

GRANT BRUCE
(248) 948 4188
gbruce@signatureassociates.com

SIGNATURE ASSOCIATES
One Towne Square, Suite 1200
Southfield, MI 48076
www.signatureassociates.com

25900 Eleven Mile Road – Southfield, Michigan

Office For Sale or Sublease

16,000-31,802
Square Feet
AVAILABLE



For more information, please contact:

JOHN BOYD
(248) 948 0102

bjoyd@signatureassociates.com

GRANT BRUCE
(248) 948 4188

gbruce@signatureassociates.com

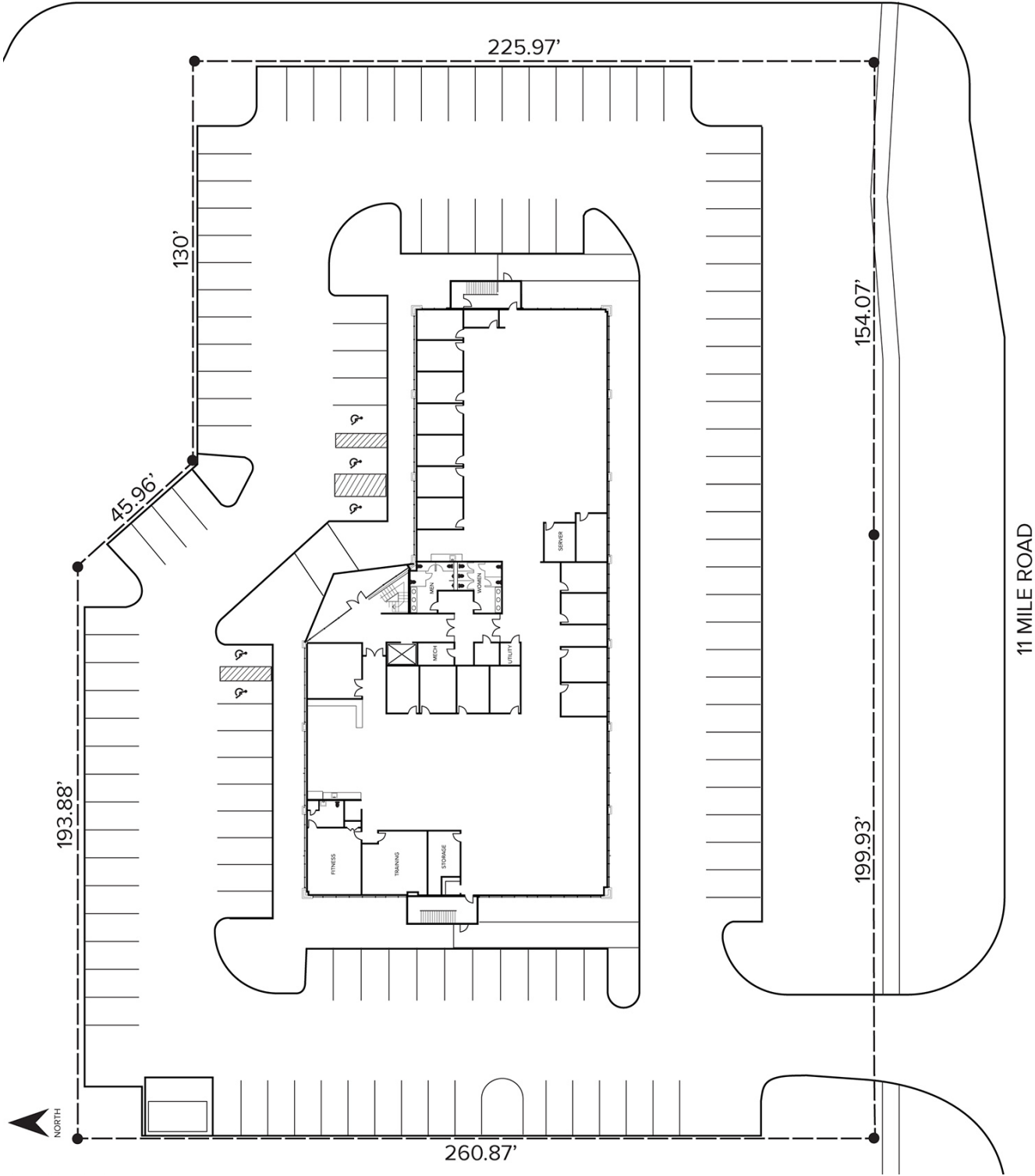
SIGNATURE ASSOCIATES
One Towne Square, Suite 1200
Southfield, MI 48076
www.signatureassociates.com

Information is subject to verification and no liability for errors or omissions is assumed. Price is subject to change and listing withdrawal.

25900 Eleven Mile Road – Southfield, Michigan
Office For Sale or Sublease

16,000-31,802
Square Feet
AVAILABLE

Site Plan / First Floor Plan



For more information, please contact:

JOHN BOYD
(248) 948 0102
bjoyd@signatureassociates.com

GRANT BRUCE
(248) 948 4188
gbruce@signatureassociates.com

SIGNATURE ASSOCIATES
One Towne Square, Suite 1200
Southfield, MI 48076
www.signatureassociates.com

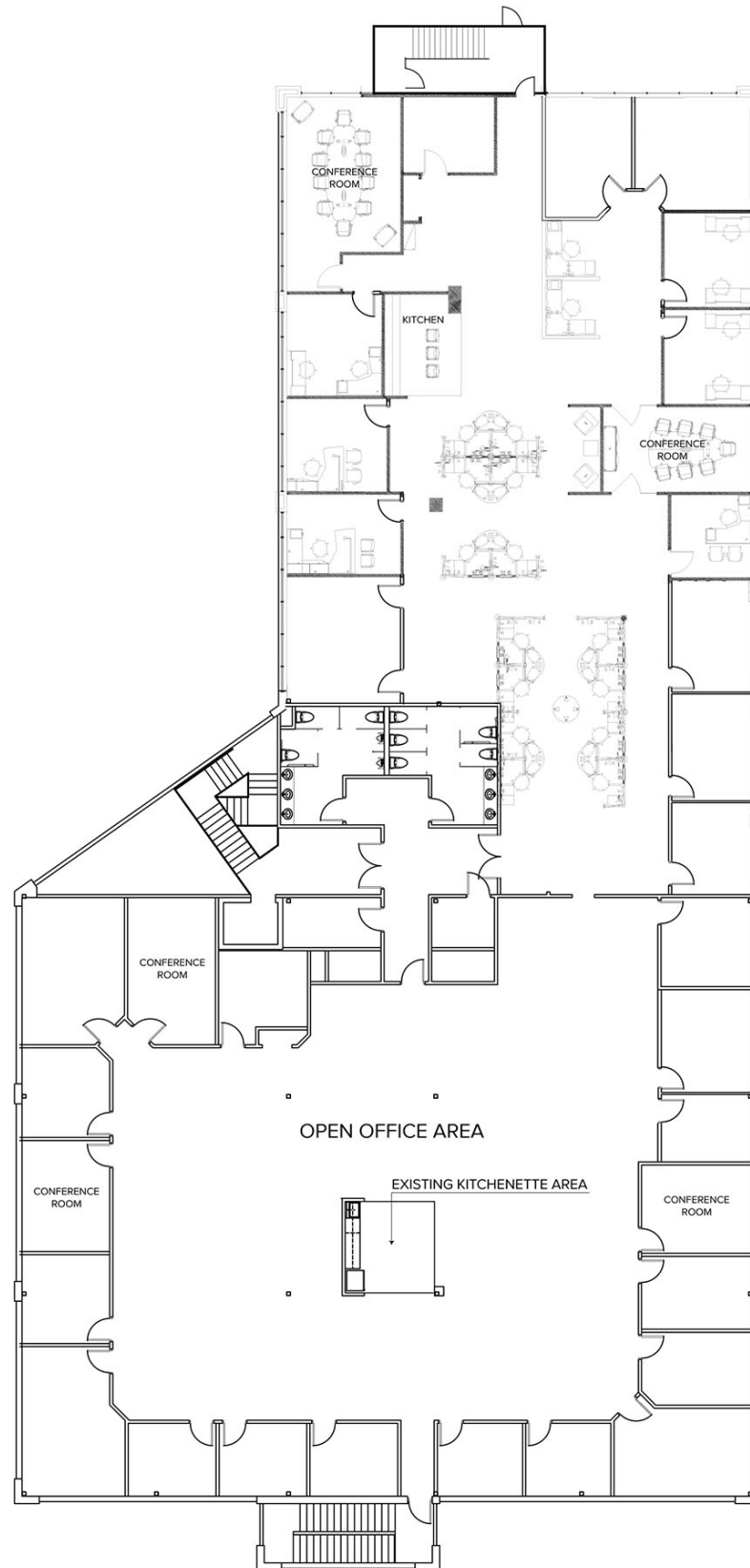
Information is subject to verification and no liability for errors or omissions is assumed. Price is subject to change and listing withdrawal.

25900 Eleven Mile Road – Southfield, Michigan

Office For Sale or Sublease

16,000-31,802
Square Feet
AVAILABLE

Second Floor Plan



For more information, please contact:

JOHN BOYD
(248) 948 0102

bjoyd@signatureassociates.com

GRANT BRUCE
(248) 948 4188

gbruce@signatureassociates.com

SIGNATURE ASSOCIATES
One Towne Square, Suite 1200
Southfield, MI 48076
www.signatureassociates.com

Information is subject to verification and no liability for errors or omissions is assumed. Price is subject to change and listing withdrawal.

25900 Eleven Mile Road – Southfield, Michigan

Office For Sale or Sublease

16,000-31,802
Square Feet
AVAILABLE

Aerial



For more information, please contact:

JOHN BOYD
(248) 948 0102

bjoyd@signatureassociates.com

GRANT BRUCE
(248) 948 4188

gbruce@signatureassociates.com

SIGNATURE ASSOCIATES
One Towne Square, Suite 1200
Southfield, MI 48076
www.signatureassociates.com

Information is subject to verification and no liability for errors or omissions is assumed. Price is subject to change and listing withdrawal.