



## 906 E 5th St Marysville, OH 43040



### Offering Summary

Sale Price:	\$650,000
Building Size:	7,600 SF
Lot Size:	0.51 Acres
Price / SF:	\$85.53
Year Built:	1951
APN:	28-0016072.0000

### Property Overview

Located along Marysville's established E 5th Street corridor, 906 E 5th St offers a rare combination of retail space, storage, and shop functionality. The 5,200 SF two-story masonry building features a retail-ready first floor, flexible second floor, a new furnace, and a newer roof. A valuable ±2,400 SF rear Quonset building with drive-in access adds significant shop and warehouse capability.

With 7,600 SF total improvements, industrial/commercial zoning, and recent building upgrades, this property supports a wide range of retail, service, contractor, or light industrial uses.

### Location Overview

Located on the established E 5th Street corridor, this property offers excellent visibility and access in a thriving commercial area. Surrounded by retail, services, and new development, it's ideal for owner-users needing retail/flex space with large shop and storage or investors seeking a versatile, income-producing property in a high-traffic, well-connected location.





**SHAI•HESS**  
COMMERCIAL REAL ESTATE LLC.

Brokerage, Development, Management  
[www.shai-hess.com](http://www.shai-hess.com)



Additional Photos

906 E 5th St

Marysville, OH 43040



Shai-Hess Commercial | 1471 Granville Road | Newark, OH 43055 | 740.587.7441 | [shai-hess.com](http://shai-hess.com)

Information contained has been established from sources that we have no doubt as to accuracy, but we do not guarantee it.





**SHAI•HESS**  
COMMERCIAL REAL ESTATE LLC.

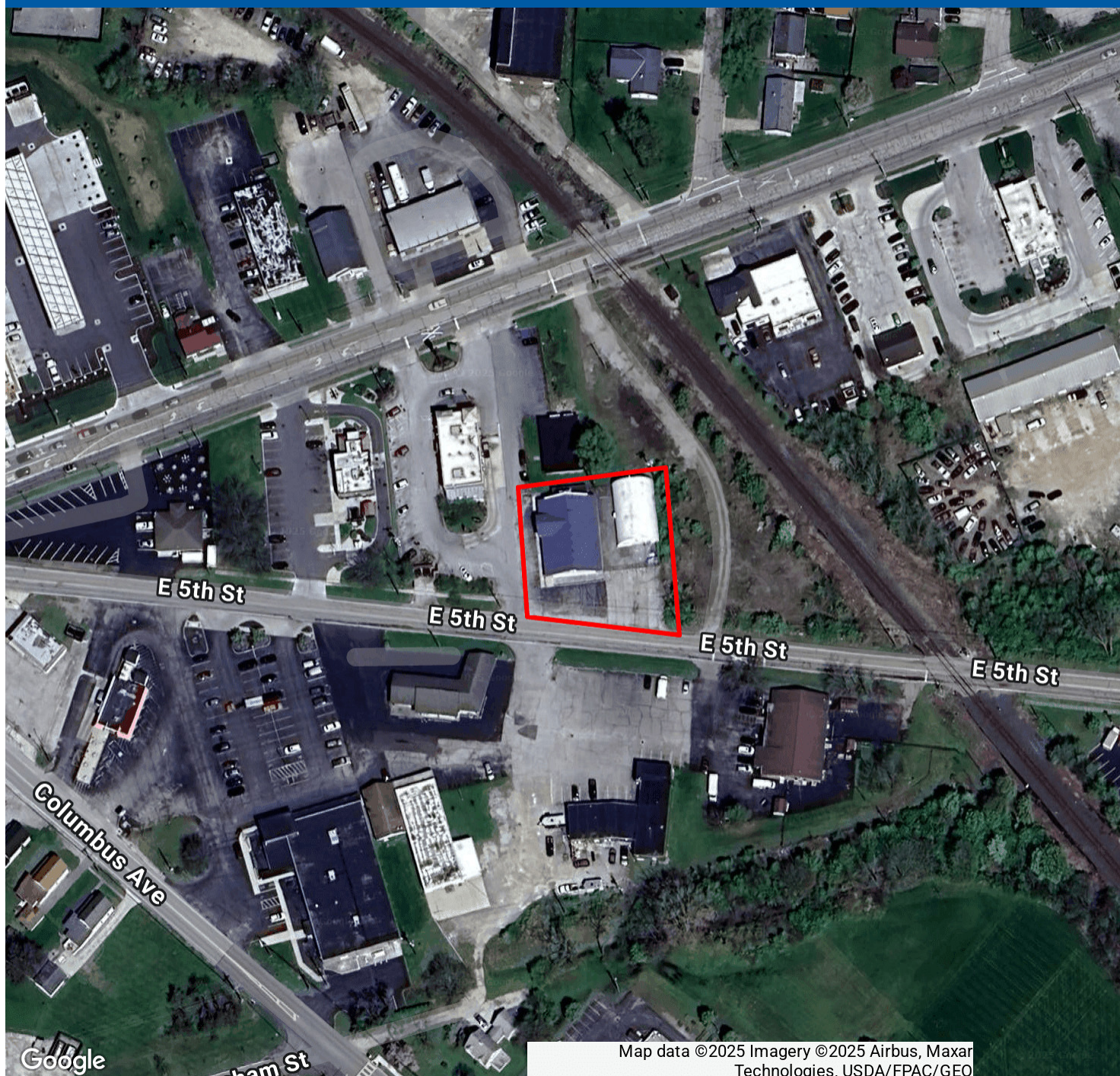
Brokerage, Development, Management  
[www.shai-hess.com](http://www.shai-hess.com)



Property Outline

**906 E 5th St**

Marysville, OH 43040



Google



Shai-Hess Commercial | 1471 Granville Road | Newark, OH 43055 | 740.587.7441 | [shai-hess.com](http://shai-hess.com)

Information contained has been established from sources that we have no doubt as to accuracy, but we do not guarantee it.





**SHAI•HESS**  
COMMERCIAL REAL ESTATE LLC.

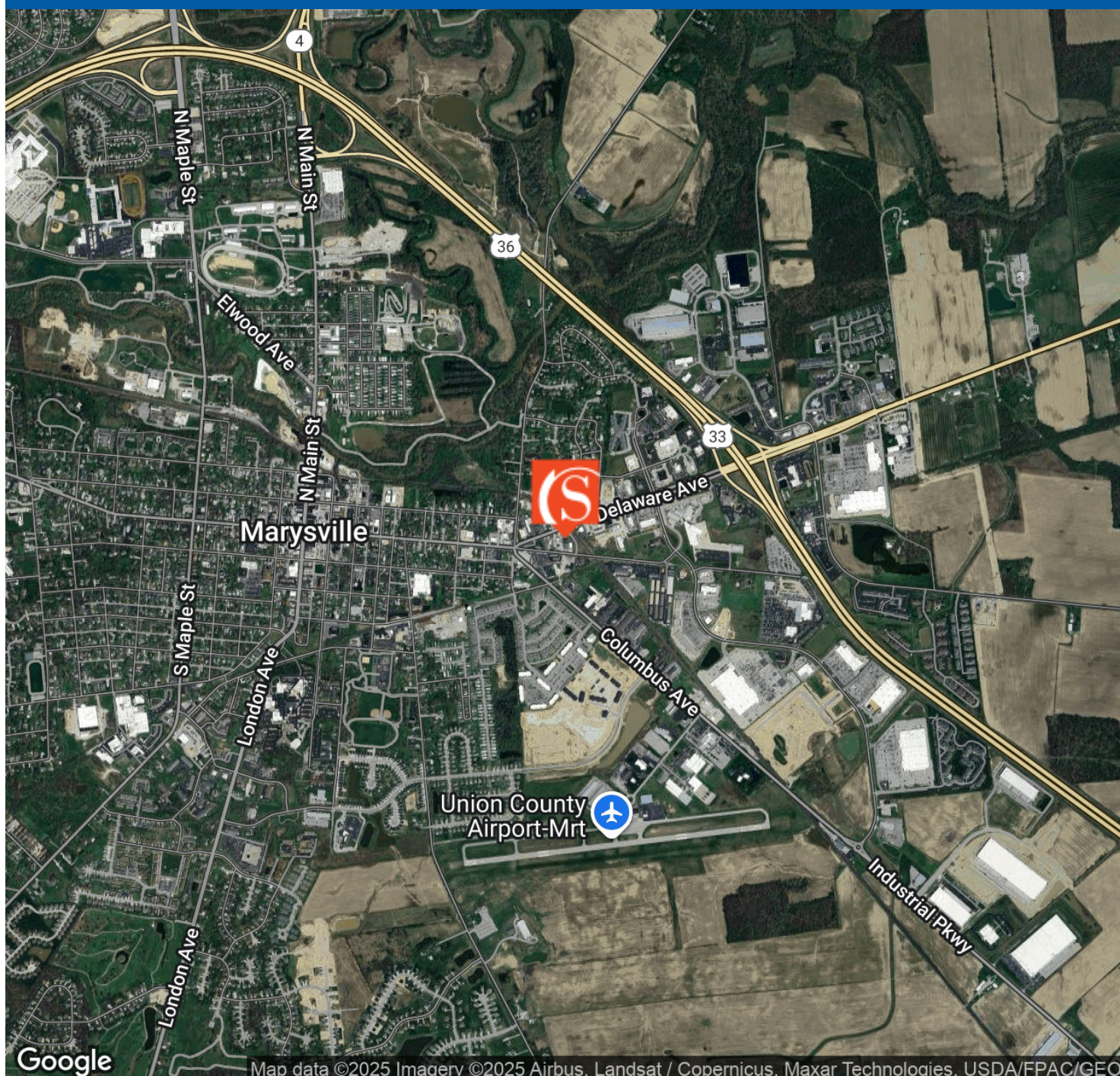
Brokerage, Development, Management  
[www.shai-hess.com](http://www.shai-hess.com)



Location Map

**906 E 5th St**

Marysville, OH 43040



Shai-Hess Commercial | 1471 Granville Road | Newark, OH 43055 | 740.587.7441 | [shai-hess.com](http://shai-hess.com)

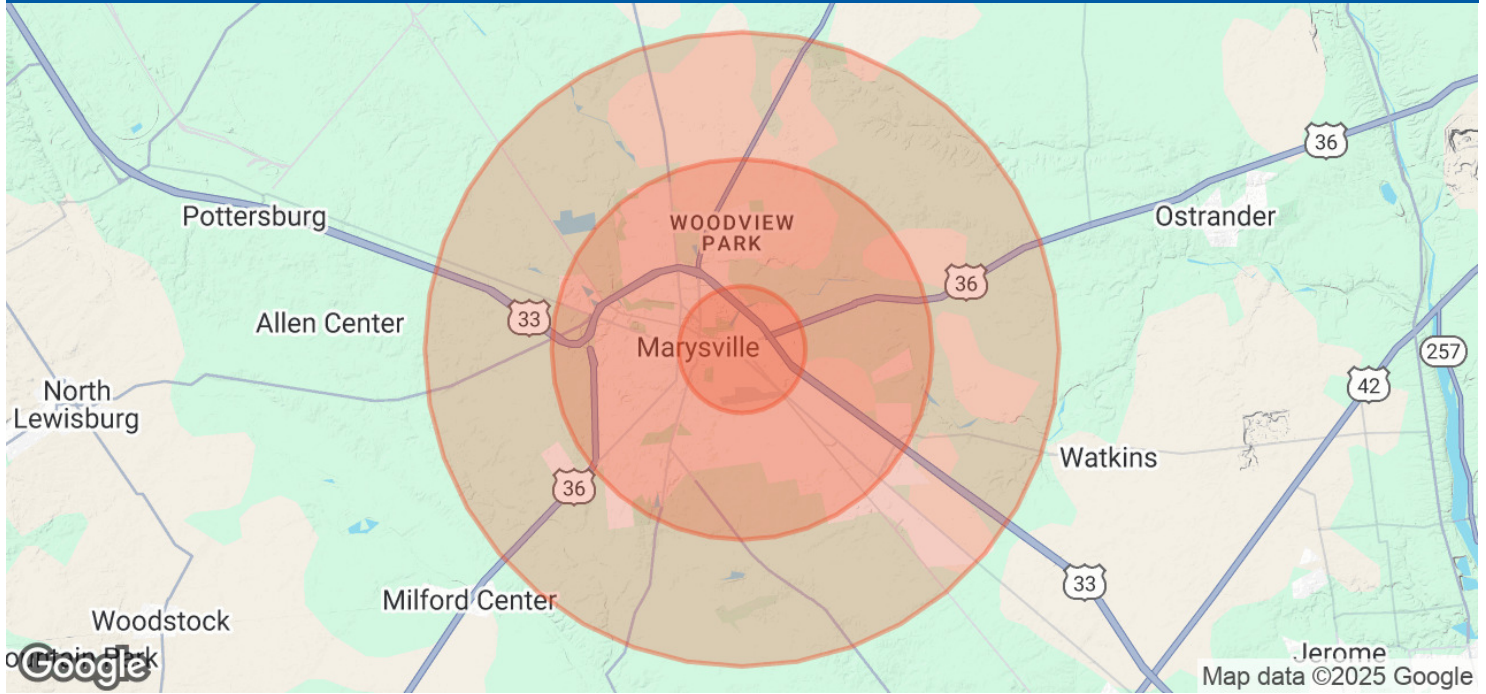
Information contained has been established from sources that we have no doubt as to accuracy, but we do not guarantee it.







## 906 E 5th St Marysville, OH 43040



### Population

	1 Mile	3 Miles	5 Miles
Total Population	4,691	28,960	32,817
Average Age	39	38	38
Average Age (Male)	37	38	38
Average Age (Female)	40	39	39

### Households & Income

	1 Mile	3 Miles	5 Miles
Total Households	1,935	10,211	11,622
# of Persons per HH	2.4	2.8	2.8
Average HH Income	\$100,412	\$131,295	\$132,547
Average House Value	\$255,695	\$292,522	\$300,064

Demographics data derived from AlphaMap

