



**6.86 ACRES**  
\*PROPERTY LINES ARE APPROXIMATE

**1310 GLORIA TERRELL DR.**  
WILDER, KY 41076

AVAILABLE FOR SALE AND/OR BUILD TO SUIT

**Rod MacEachen**  
(513) 675-5764  
[Rod@SqFtCommercial.com](mailto:Rod@SqFtCommercial.com)

**Roddy MacEachen, SIOR**  
(513) 739-3985  
[Roddy@SqFtCommercial.com](mailto:Roddy@SqFtCommercial.com)

**Jared Wagoner, SIOR**  
(812) 890-1768  
[Jared@SqFtCommercial.com](mailto:Jared@SqFtCommercial.com)

**Amy Castaneda**  
(503) 310-9768  
[Amy@SqFtCommercial.com](mailto:Amy@SqFtCommercial.com)

**Sarah Kern**  
(513) 426-4864  
[Sarah@SqFtCommercial.com](mailto:Sarah@SqFtCommercial.com)

© 2025 SqFt Commercial LLC. All rights reserved. No warranty or representation, express or implied, is made to the accuracy or completeness of the information contained herein, and same is submitted subject to errors, omissions, change of price, rental or other conditions, withdrawal without notice, and to any special listing conditions imposed by the property owner(s). As applicable, we make no representation as to the condition of the property (or properties) in question. This information has been obtained from sources believed reliable, but has not been verified for accuracy or completeness. You should conduct a careful, independent investigation of the property and verify all information. Any reliance on this information is solely at your own risk. SqFt Commercial and the SqFt Commercial logo are service marks of SqFt Commercial, Inc. All other marks displayed on this document are the property of their respective owners. Photos herein are the property of their respective owners. Use of these images without the express written consent of the owner is prohibited.



# 1310 GLORIA TERRELL DR.

WILDER, KY 41076

INFO@SQFTCOMMERCIAL.COM  
(513) 843-1600  
[SQFTCOMMERCIAL.COM](http://SQFTCOMMERCIAL.COM)



## PROPERTY HIGHLIGHTS

- 6.85-acre industrial land pad/shovel ready site located in Wilder, KY minutes to I-275, I-71/75, and I-471
- 15 minutes/13 miles to CVG – Cincinnati Northern Kentucky International Airport and 12 minutes/9 miles from downtown Cincinnati CBD.
- [City of Wilder I-2 \(Heavy Industrial\) & IP \(Industrial Park\) zoning](#)
- Campbell County Parcel ID: 999-99-19-841.03
- Utility Providers
  - Electric: Duke Energy Kentucky or Owens Electric
  - Natural Gas: Duke Energy Kentucky
  - Water: Northern Kentucky Water District (12" water tap has been installed for the site)
  - Sewer: Sanitation District 1
- Stormwater connection installed at northwest corner, will handle all off site for full useability of site
- Sale Price: \$2,895,000



[CLICK HERE FOR AERIAL VIDEO](#)

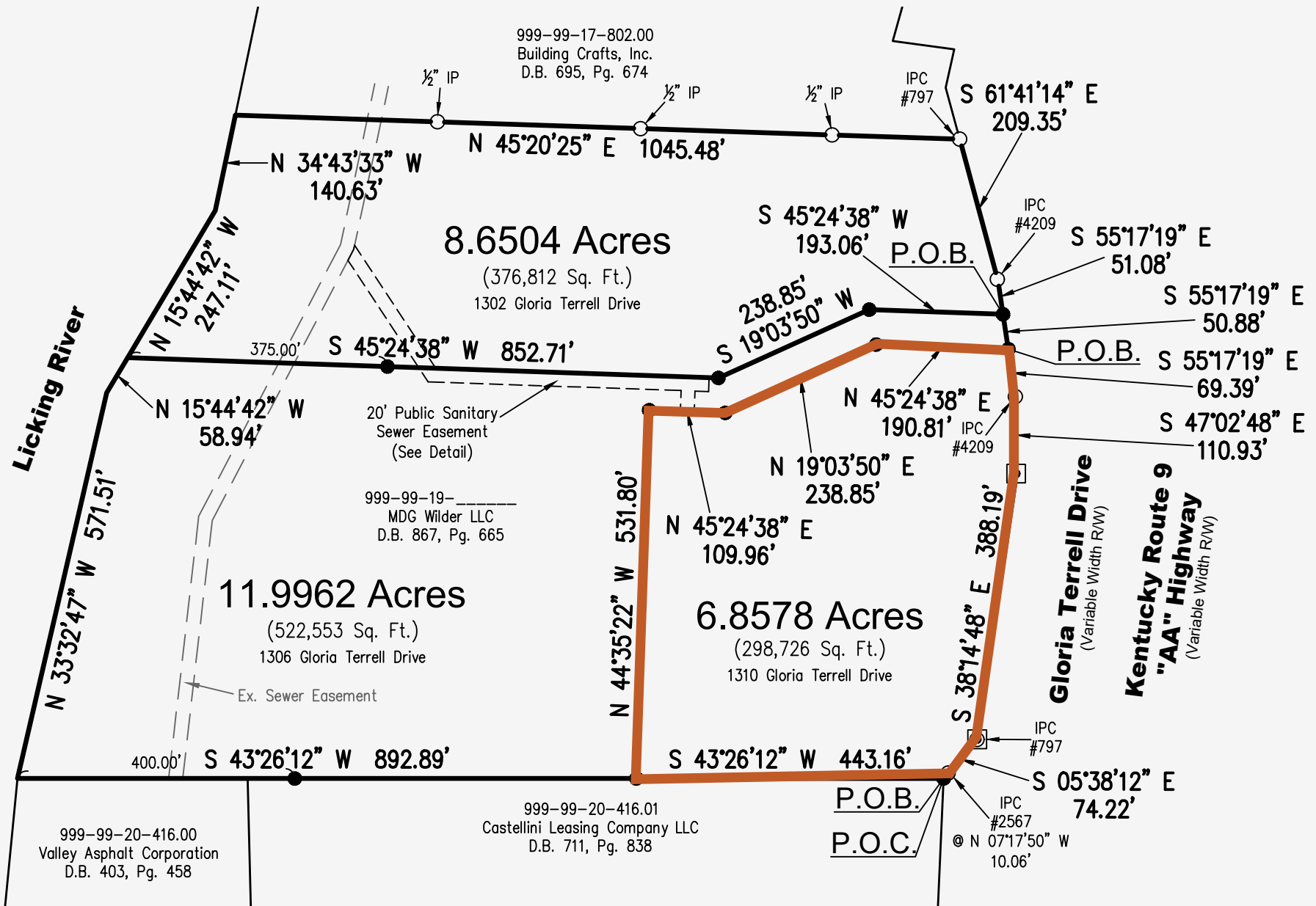


**1310 GLORIA TERRELL DR.**  
WILDER, KY 41076

INFO@SQFTCOMMERCIAL.COM  
(513) 843-1600  
[SQFTCOMMERCIAL.COM](http://SQFTCOMMERCIAL.COM)



## SITE PLAN





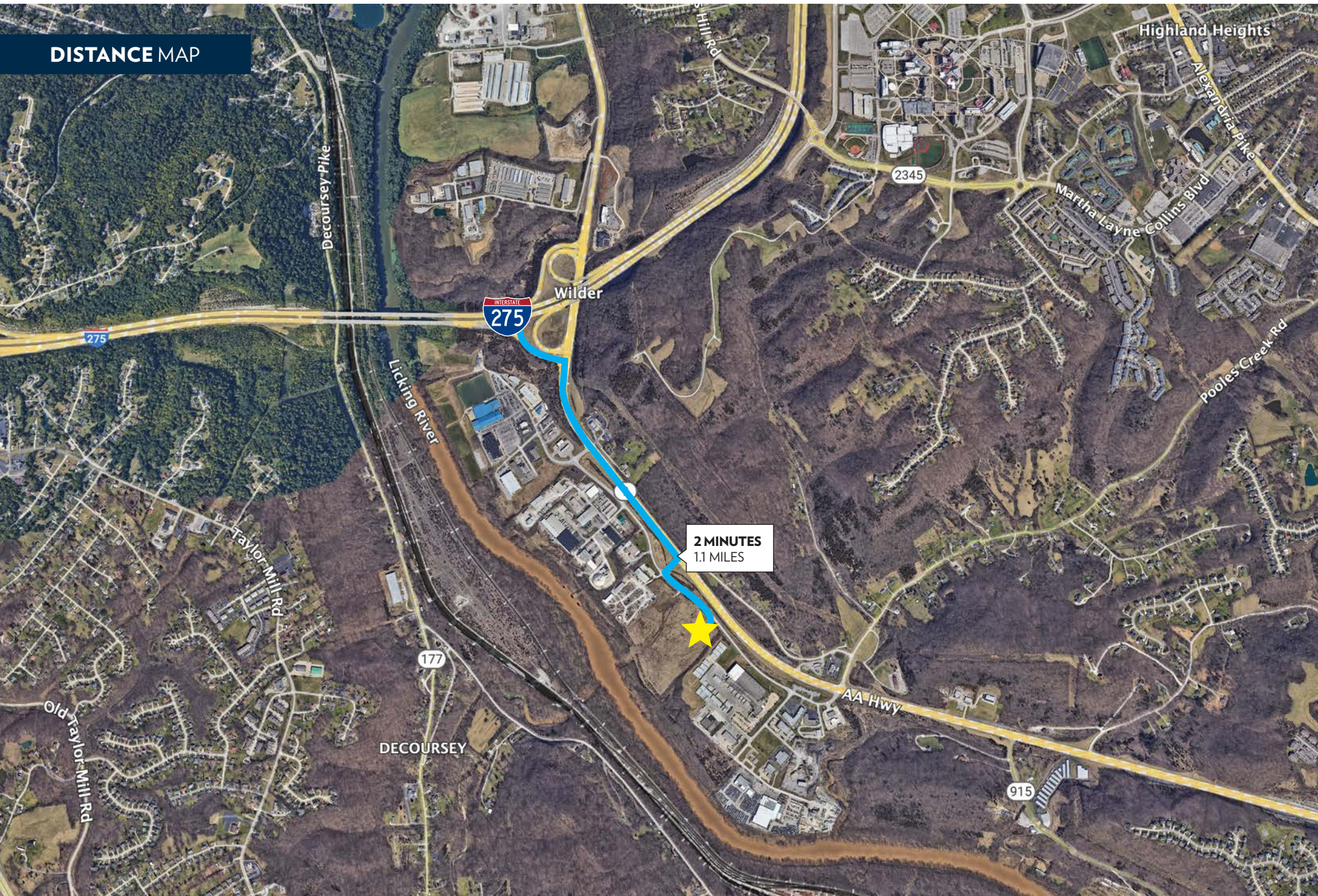
# 1310 GLORIA TERRELL DR.

WILDER, KY 41076

INFO@SQFTCOMMERCIAL.COM  
(513) 843-1600  
SQFTCOMMERCIAL.COM



## DISTANCE MAP





**1310 GLORIA TERRELL DR.**  
WILDER, KY 41076

INFO@SQFTCOMMERCIAL.COM  
(513) 843-1600  
[SQFTCOMMERCIAL.COM](http://SQFTCOMMERCIAL.COM)

