

INDUSTRIAL FOR LEASE | 8,571 SF

1308 S. ALLEC STREET ANAHEIM, CA 92805

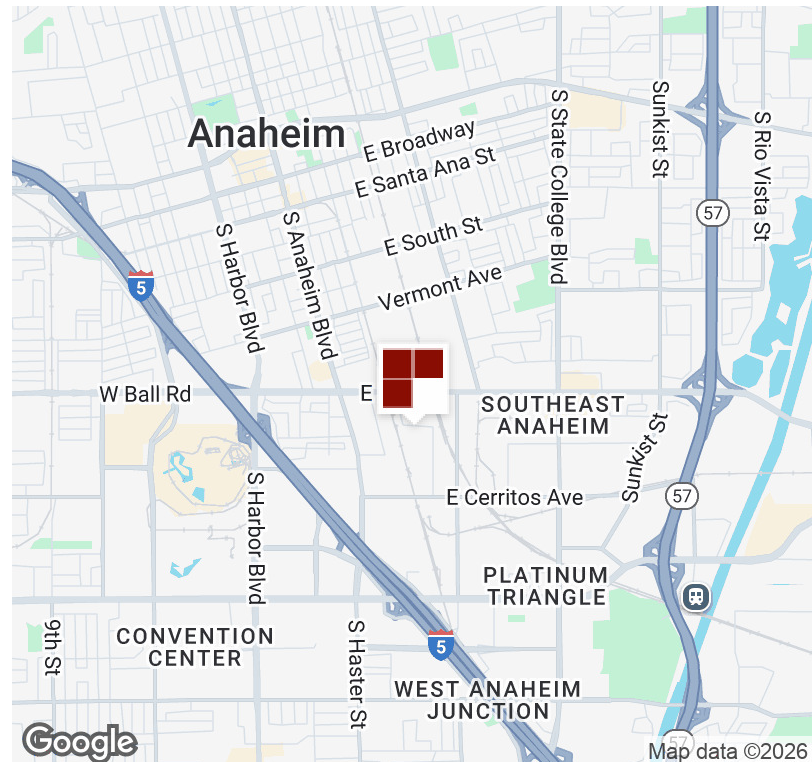
COMPETITIVE GROSS LEASE RATE | NO CAMS

Bryan



PROPERTY HIGHLIGHTS

- Approximately 8,571 SF Unit Zoned Industrial
- 2,900 SF Office Area, Reception, 6 Private Office, Bullpen and Assembly Area
- Three Ground Level Doors (3) 12' x 12'
- 400 Amp, 120/208v 3 Phase, 4 Wire
- 16' Minimum Clearance
- Large Fenced Yard (Approx. 5,000sf+)
- Easy Truck Access / Drive Around Bldg.
- Stadium Location



MATTHEW ROSSMAN
DIRECTOR OF MARKETING
714.783.2107
matt@bryanindprop.com
CA DRE #01794680

BRYAN INDUSTRIAL PROPERTIES
146 E. ORANGETHORPE AVENUE
ANAHEIM, CA 92801
BRYANINDPROP.COM
CA DRE #00002442

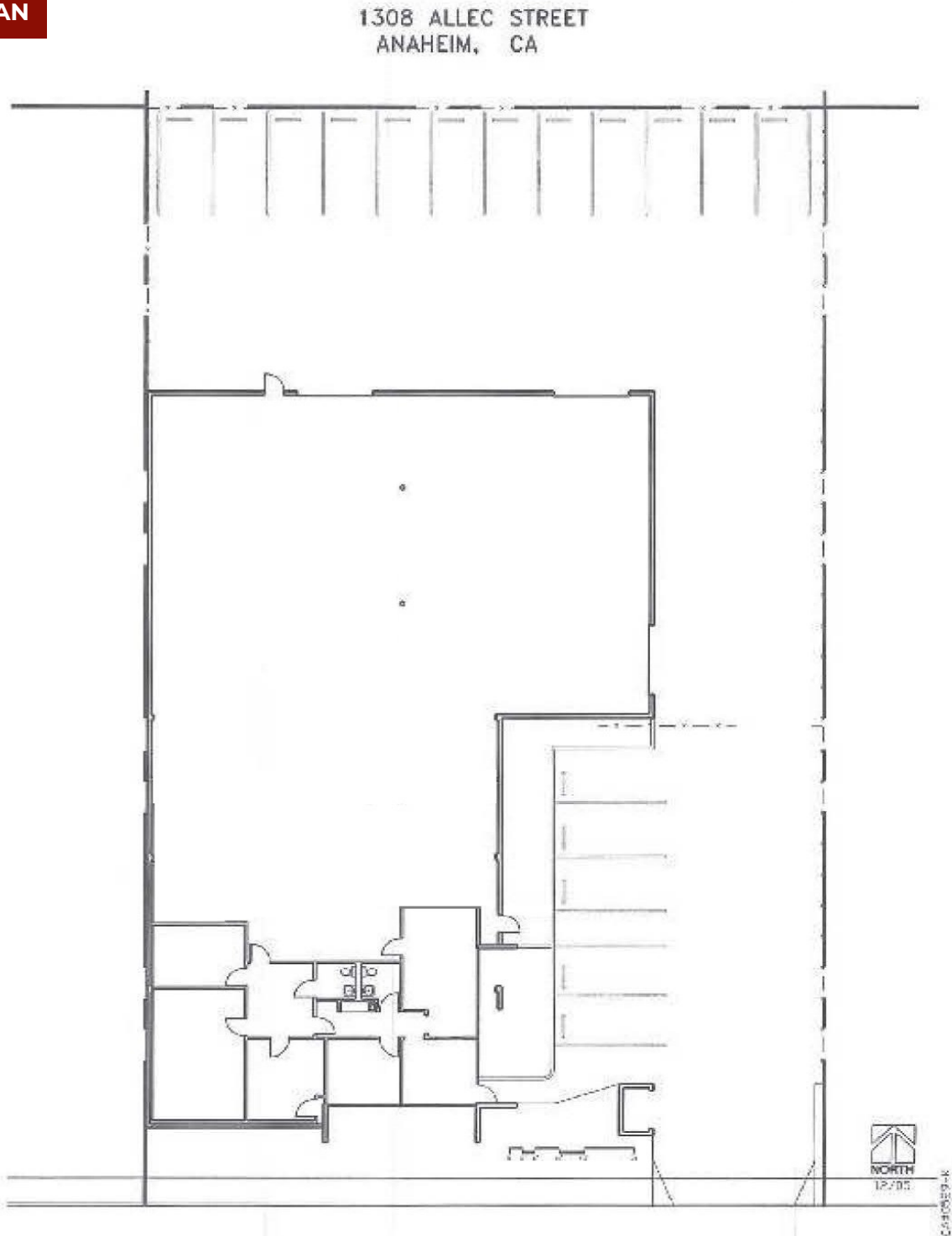


The information contained herein has been obtained from sources we deem reliable. However, no warranties or representations, expressed or implied, are made as to the accuracy of any information contained herein, and the information is subject to errors and omissions. This information is also subject to price, rental or other conditions, withdrawal without notice, and to any special listing conditions by our principals.

INDUSTRIAL FOR LEASE | 8,571 SF

1308 S. ALLEC STREET ANAHEIM, CA 92805

FLOOR PLAN



MATTHEW ROSSMAN
DIRECTOR OF MARKETING
714.783.2107
matt@bryanindprop.com
CA DRE #01794680

BRYAN INDUSTRIAL PROPERTIES
146 E. ORANGETHORPE AVENUE
ANAHEIM, CA 92801
BRYANINDPROP.COM
CA DRE #00002442

