

# PHYSICIANS SPECIALTY CENTER

3400 I-30  
Mesquite, TX 75150

## Medical For Lease

1,567 - 17,696 SF



Leasing Information:  
214.461.2300

**Peter Shaw**  
214.461.2302  
PShaw@lpc.com

**Banks Newton**  
214.461.2388  
bnewton@lpc.com

**Elizabeth Madden**  
214.461.2366  
emadden@lpc.com

# Lincoln

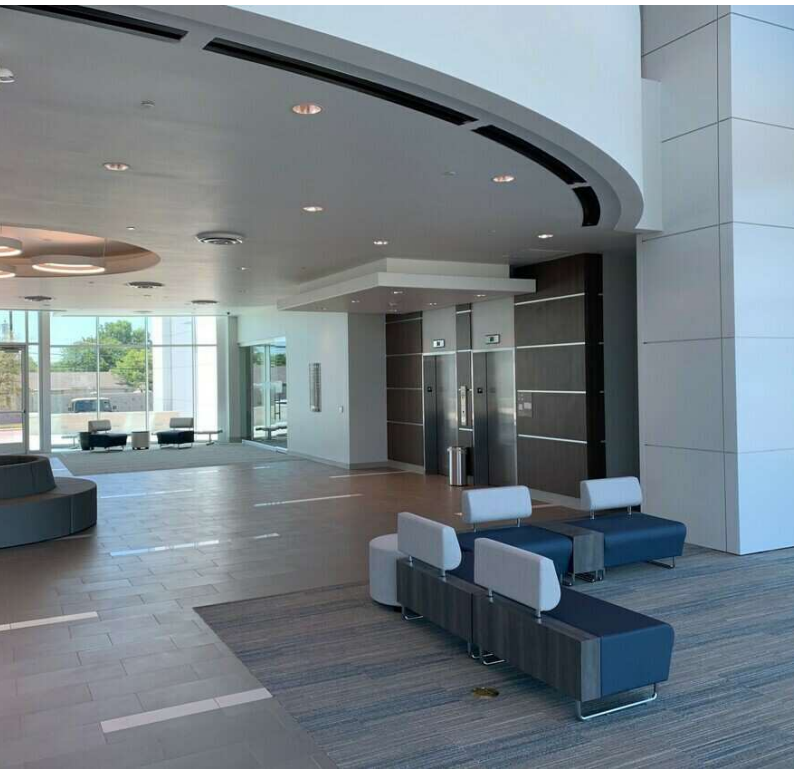
Lincoln Property Company  
8140 Walnut Hill Lane Suite 700  
Dallas, TX 75231

[www.lpc.com](http://www.lpc.com)

# PHYSICIANS SPECIALTY CENTER

## Available Space Summary

3400 I-30 | Mesquite, TX 75150



Availabilities	SF	Lease Rate
Suite 180	7,625 SF	Negotiable
Suite 210	1,880 SF	Negotiable
Suite 290	1,567 SF	Negotiable
Suite 380	2,913 SF	Negotiable
Suite 390	2,328 SF	Negotiable
Suite 300	17,696 SF	Negotiable

### Property Highlights

- Highly Visible from Interstate 30
- Excellent patient accessibility
- Turn Key full finished medical suites
- Full service imaging center
- ASC with 3 OR's & 2 procedure rooms
- Anchored by an Ambulatory Surgery Center and State-of-the-art Full-Service Diagnostic Imaging Center
- Fully built out spec suites ranging from 1,300-8,300 SF
- Building signage and monument signage available for new tenants

**Peter Shaw**

214.461.2302  
Pshaw@lpc.com

**Banks Newton**

214.461.2388  
bnewton@lpc.com

**Elizabeth Madden**

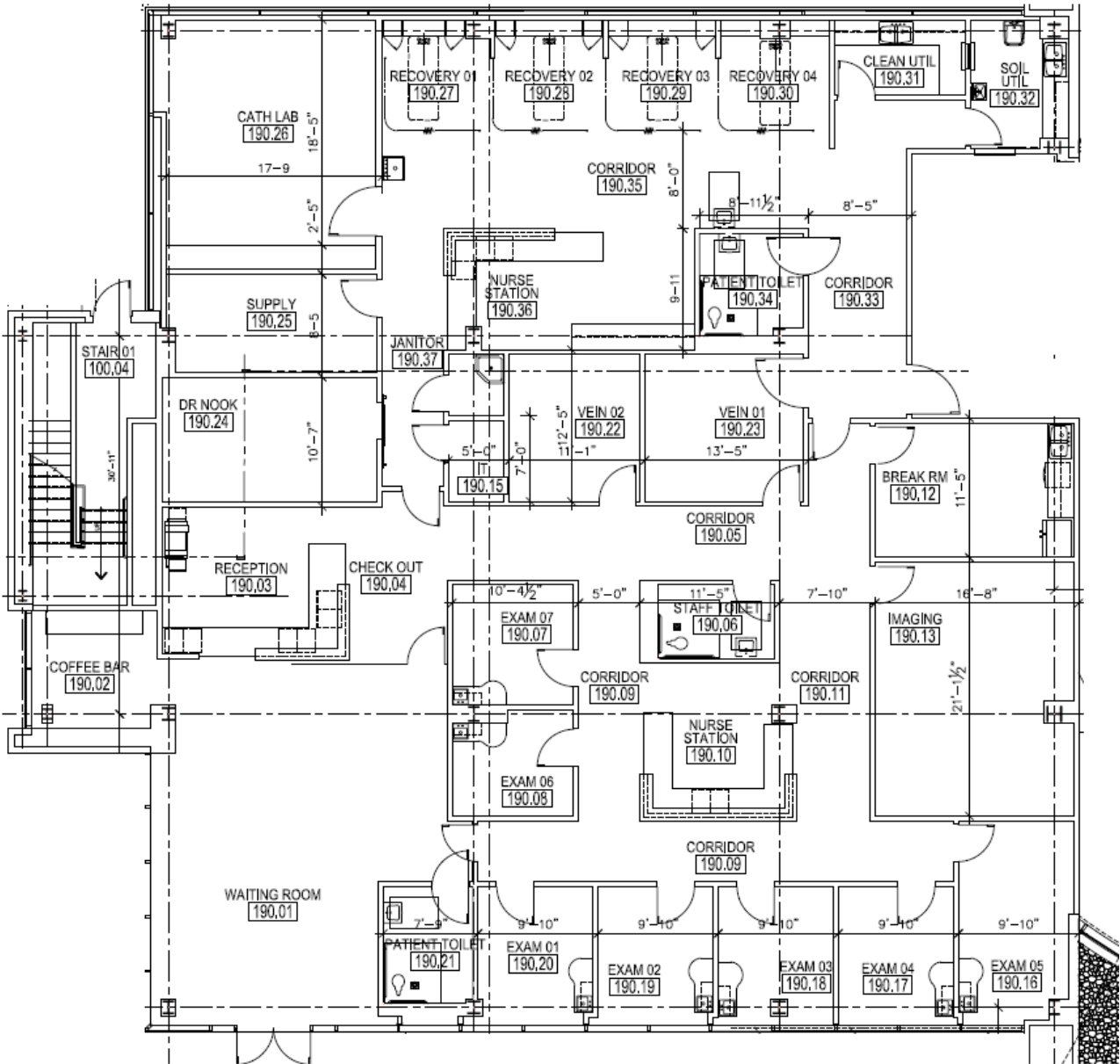
214.461.2366  
emadden@lpc.com

**Lincoln**

# PHYSICIANS SPECIALTY CENTER

Suite 180

3400 I-30 | Mesquite, TX 75150



**Suite**

Suite 180

**Size**

7,625 SF

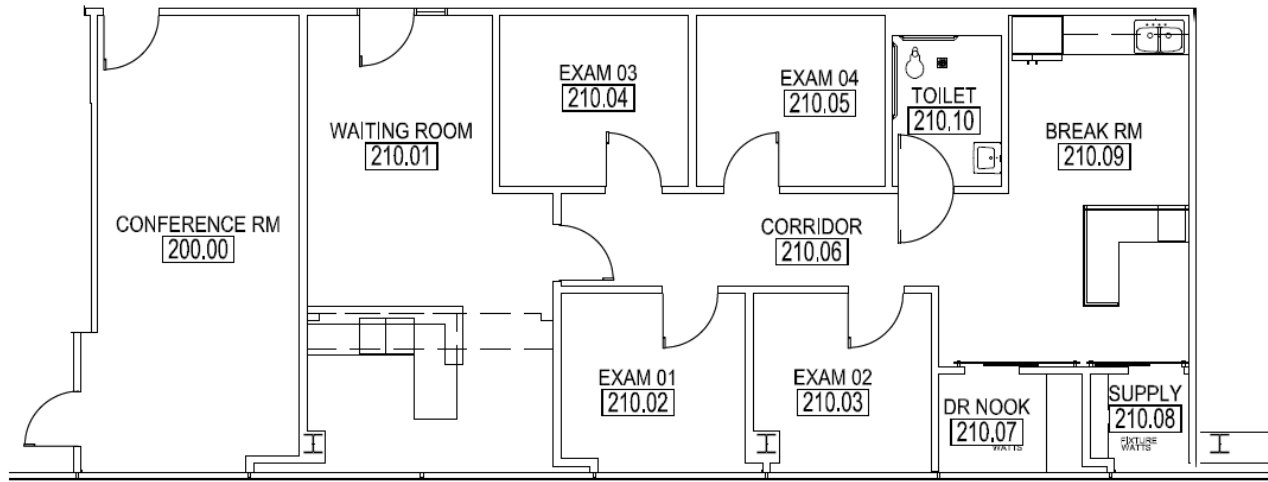
**Peter Shaw**    **Banks Newton**    **Elizabeth Madden**  
 214.461.2302    214.461.2388    214.461.2366  
 Pshaw@lpc.com    bnewton@lpc.com    emadden@lpc.com

**Lincoln**

# PHYSICIANS SPECIALTY CENTER

Suite 210

3400 I-30 | Mesquite, TX 75150



Suite 210 -1,880 RSF

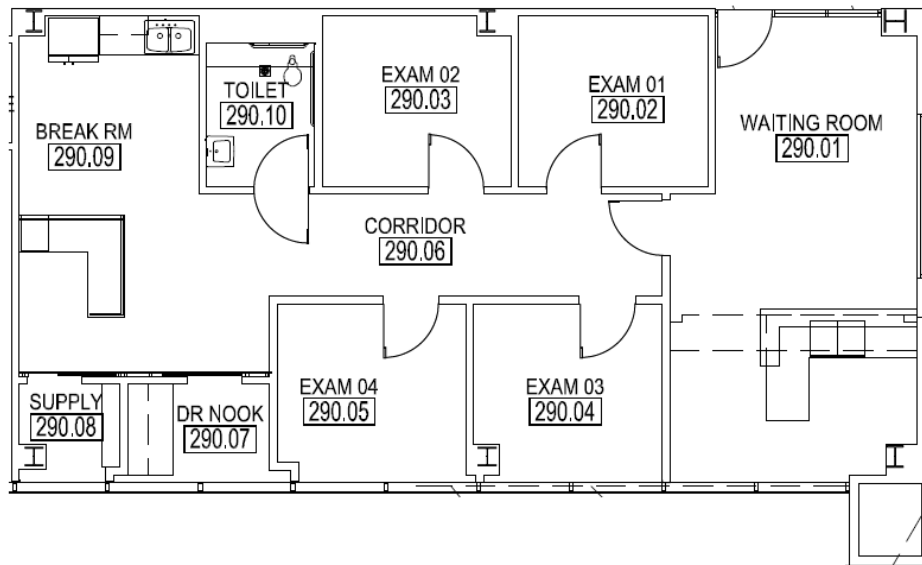
<b>Peter Shaw</b> 214.461.2302 PShaw@lpc.com	<b>Banks Newton</b> 214.461.2388 bnewton@lpc.com	<b>Elizabeth Madden</b> 214.461.2366 emadden@lpc.com
--	--	--

## Lincoln

# PHYSICIANS SPECIALTY CENTER

Suite 290

3400 I-30 | Mesquite, TX 75150



**Peter Shaw**      **Banks Newton**      **Elizabeth Madden**  
214.461.2302      214.461.2388      214.461.2366  
Pshaw@lpc.com      bnewton@lpc.com      emadden@lpc.com

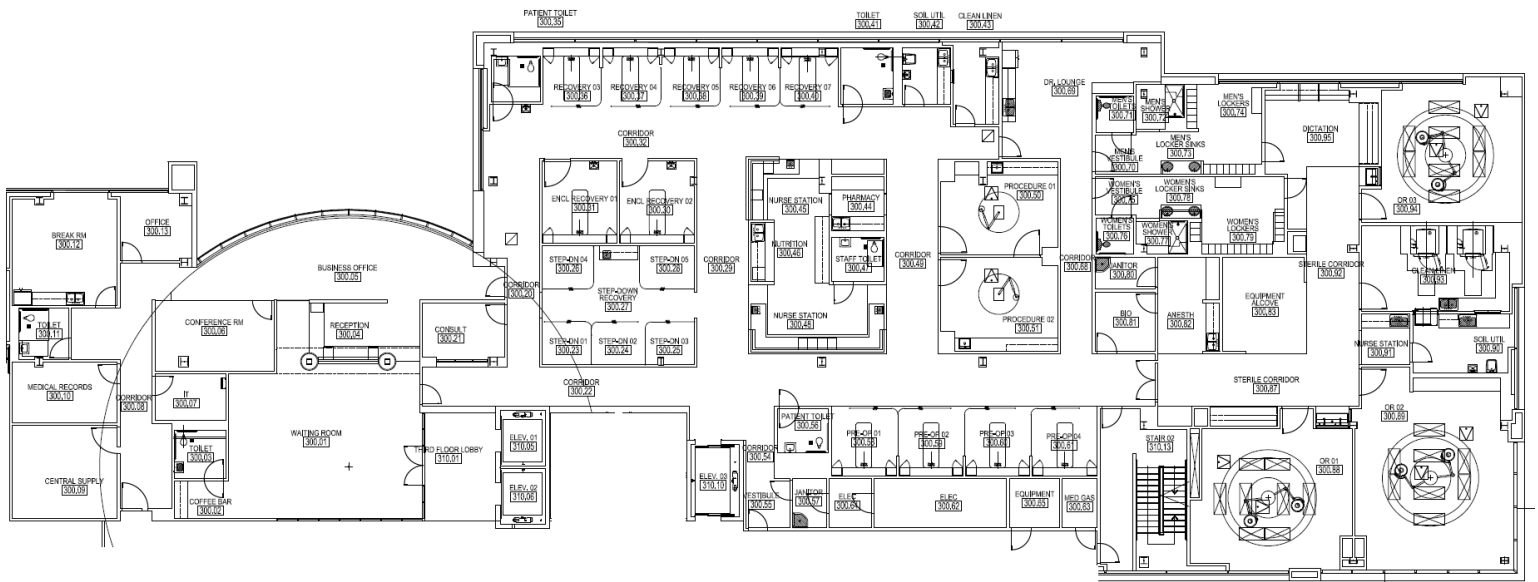
**Lincoln**



# PHYSICIANS SPECIALTY CENTER

Suite 300

3400 I-30 | Mesquite, TX 75150



**Suite**

Suite 300

**Size**

17,696 SF

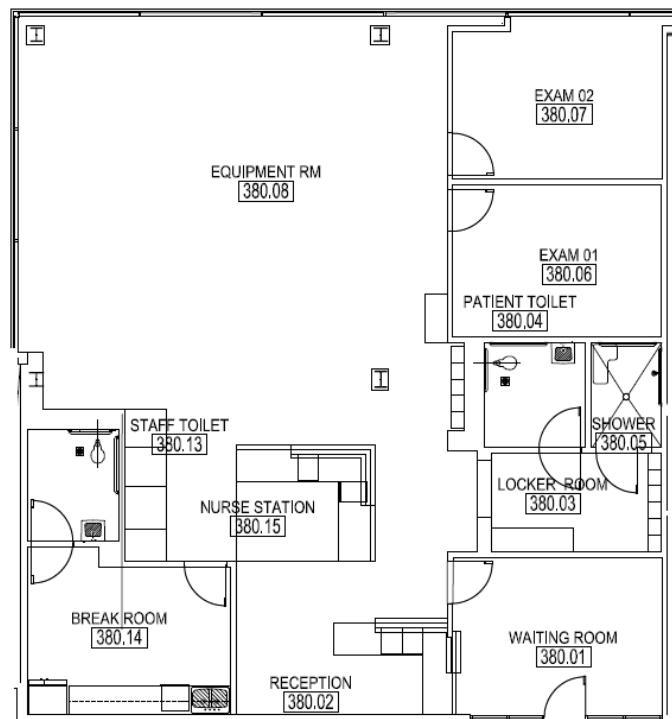
**Peter Shaw**      **Banks Newton**      **Elizabeth Madden**  
 214.461.2302      214.461.2388      214.461.2366  
 Pshaw@lpc.com      bnewton@lpc.com      emadden@lpc.com

**Lincoln**

# PHYSICIANS SPECIALTY CENTER

Suite 380

3400 I-30 | Mesquite, TX 75150



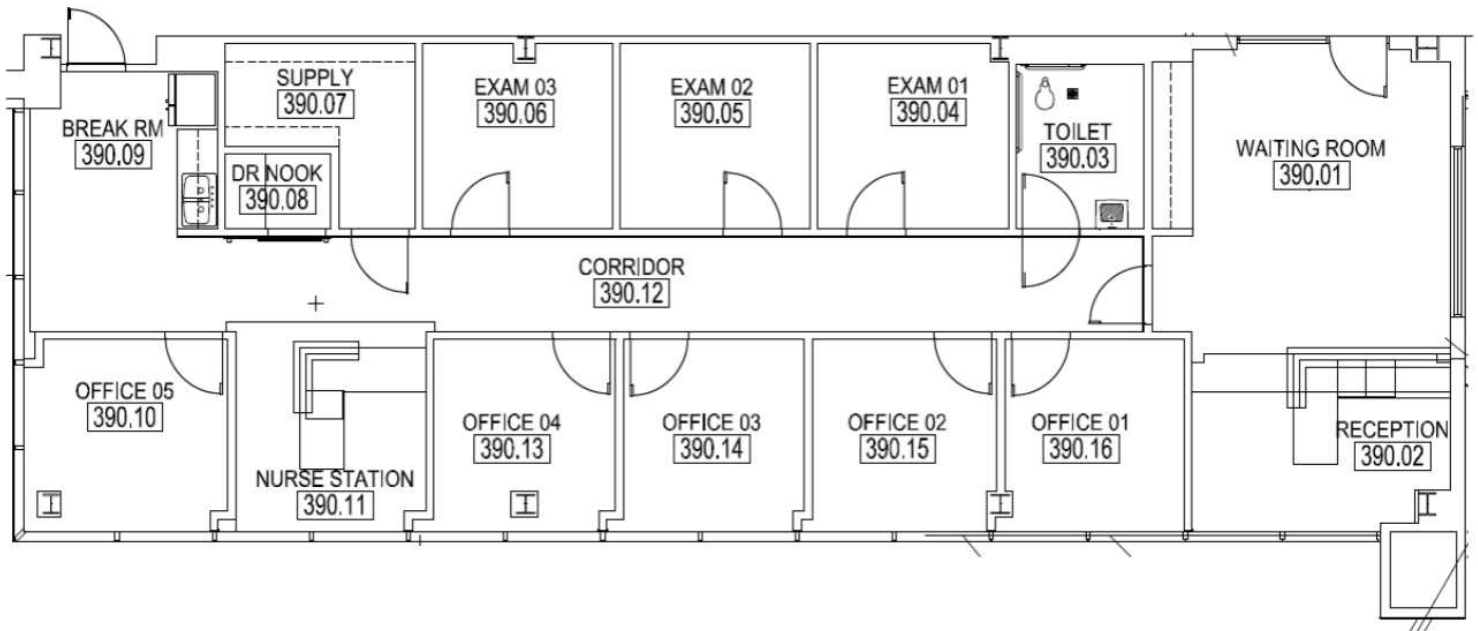
**Peter Shaw**      **Banks Newton**      **Elizabeth Madden**  
214.461.2302      214.461.2388      214.461.2366  
PShaw@lpc.com      bnewton@lpc.com      emadden@lpc.com

**Lincoln**

# PHYSICIANS SPECIALTY CENTER

Suite 390

3400 I-30 | Mesquite, TX 75150



**Peter Shaw**      **Banks Newton**      **Elizabeth Madden**  
214.461.2302      214.461.2388      214.461.2366  
Pshaw@lpc.com      bnewton@lpc.com      emadden@lpc.com

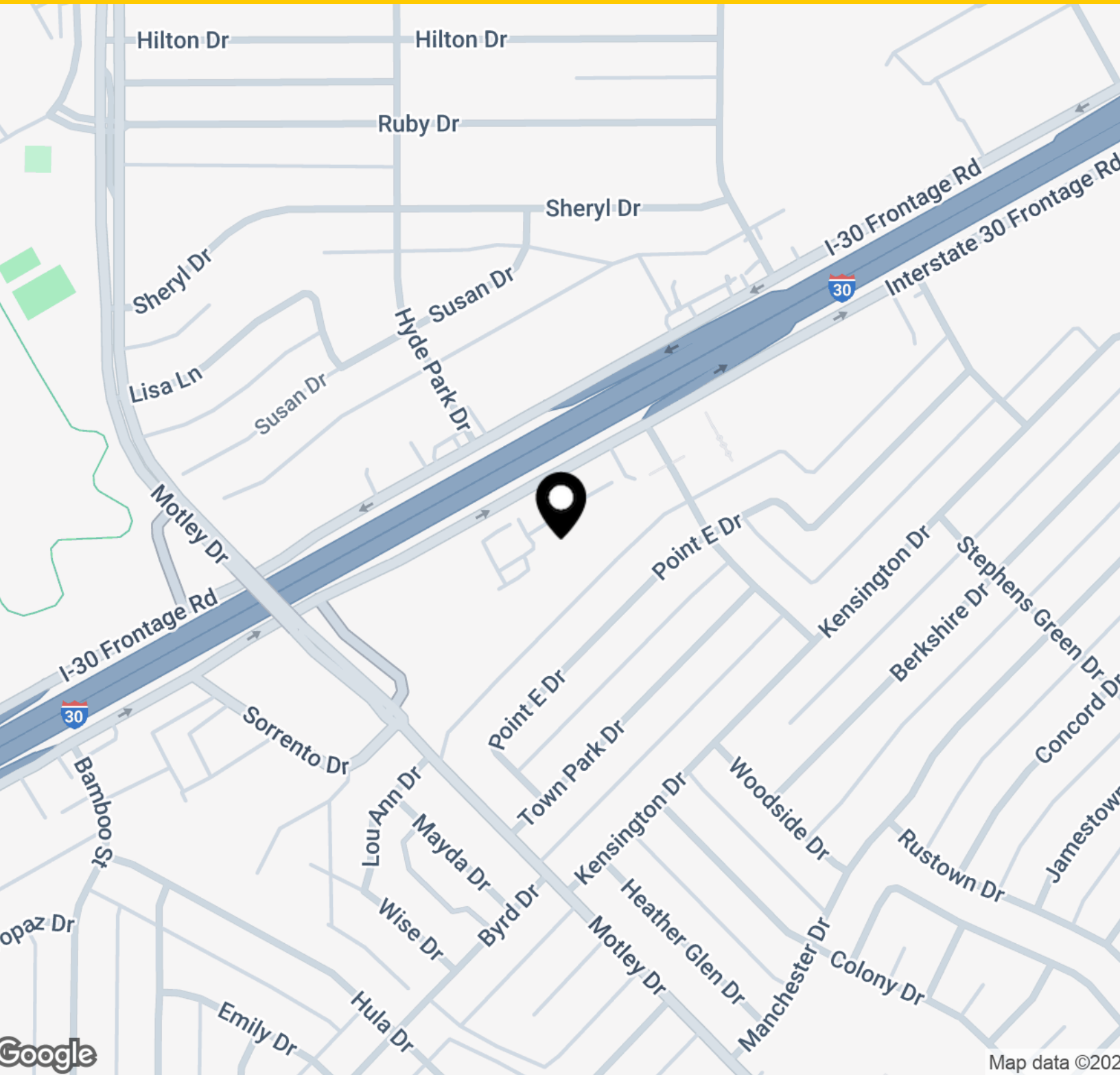
## Lincoln



# PHYSICIANS SPECIALTY CENTER

Location Map

3400 I-30 | Mesquite, TX 75150



**Peter Shaw**

214.461.2302  
PShaw@lpc.com

**Banks Newton**

214.461.2388  
bnewton@lpc.com

**Elizabeth Madden**

214.461.2366  
emadden@lpc.com

**Lincoln**



# PHYSICIANS SPECIALTY CENTER

3400 I-30  
Mesquite, TX 75150

Leasing Information:  
214.461.2300

**Peter Shaw**  
214.461.2302  
PShaw@lpc.com

**Banks Newton**  
214.461.2388  
bnewton@lpc.com

**Elizabeth Madden**  
214.461.2366  
emadden@lpc.com

## Lincoln

Lincoln Property Company  
8140 Walnut Hill Lane Suite 700  
Dallas, TX 75231

[www.lpc.com](http://www.lpc.com)