



For Lease

**Jared Zebe**  
208 709 7311  
jared.zebe@colliers.com

**Mike Zebe**  
208 705 6453  
mike.zebe@colliers.com

**Don Zebe**  
208 403 1973  
don.zebe@colliers.com

---

2043 E Center Street  
Pocatello, Idaho 83201  
208 951 2100  
colliers.com/idaho

## City Center | Medical Office Building

1001 N 7th Avenue, Pocatello, ID

### Highlights:

- Class A medical office space
- Centrally located
- Build out as desired
- Full time janitorial and facility management on site
- 24/7 security monitored
- Common training facility
- Call agent for tour

This document has been prepared by Colliers for advertising and general information only. Colliers makes no guarantees, representations or warranties of any kind, expressed or implied, regarding the information including, but not limited to, warranties of content, accuracy and reliability. Any interested party should undertake their own inquiries as to the accuracy of the information. Colliers excludes unequivocally all inferred or implied terms, conditions and warranties arising out of this document and excludes all liability for loss and damages arising there from. This publication is the copyrighted property of Colliers and /or its licensor(s). © 2024. All rights reserved. This communication is not intended to cause or induce breach of an existing listing agreement. Colliers Portneuf Valley, LLC.

# For Lease

## Property Information

**Property Type** Medical Office

**Land Size** 3 Acres

**Building Size** 50,000 SF

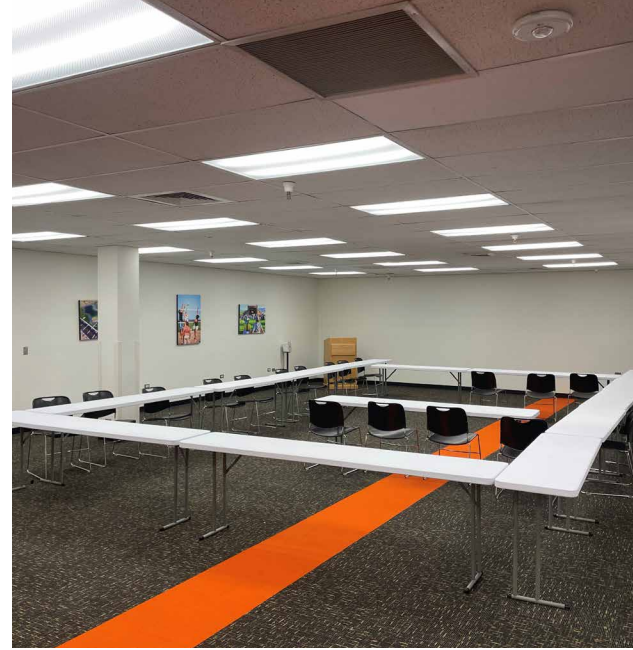
**Parking** Ample

**Lease Type** Modified Gross

**Lease Rate** Call agent

## Demos

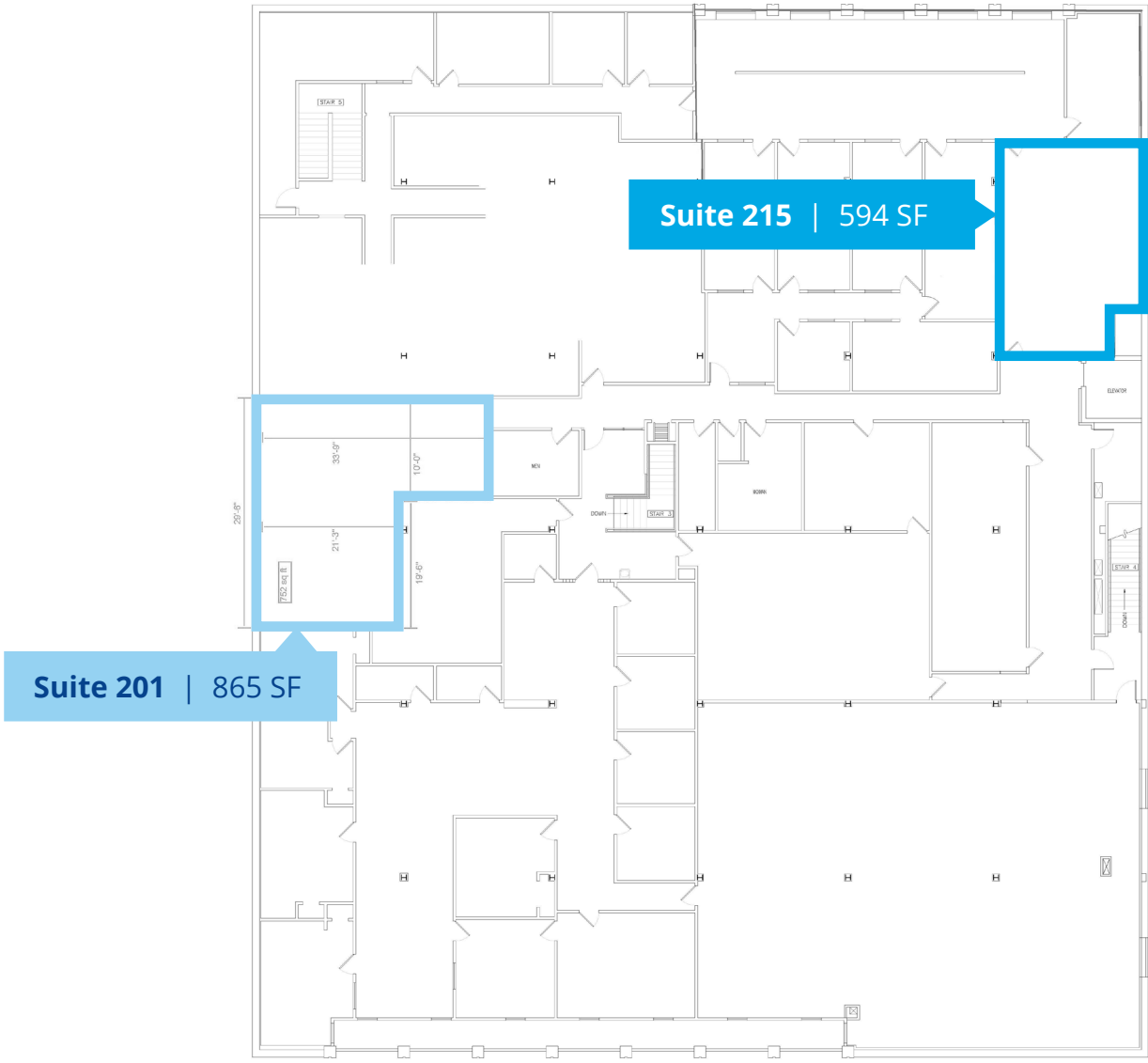
	<b>1 Miles</b>	<b>3 Miles</b>	<b>5 Miles</b>
Population	12,498	48,513	75,164
Households	5,572	19,124	28,338
Avg. Income	\$53,679	\$66,241	\$73,550



# For Lease

## Space Available

Suite	Size	Rate
201	865 SF	Call agent
215	594 SF	Call agent



Suite 201 | 865 SF

Suite 215 | 594 SF

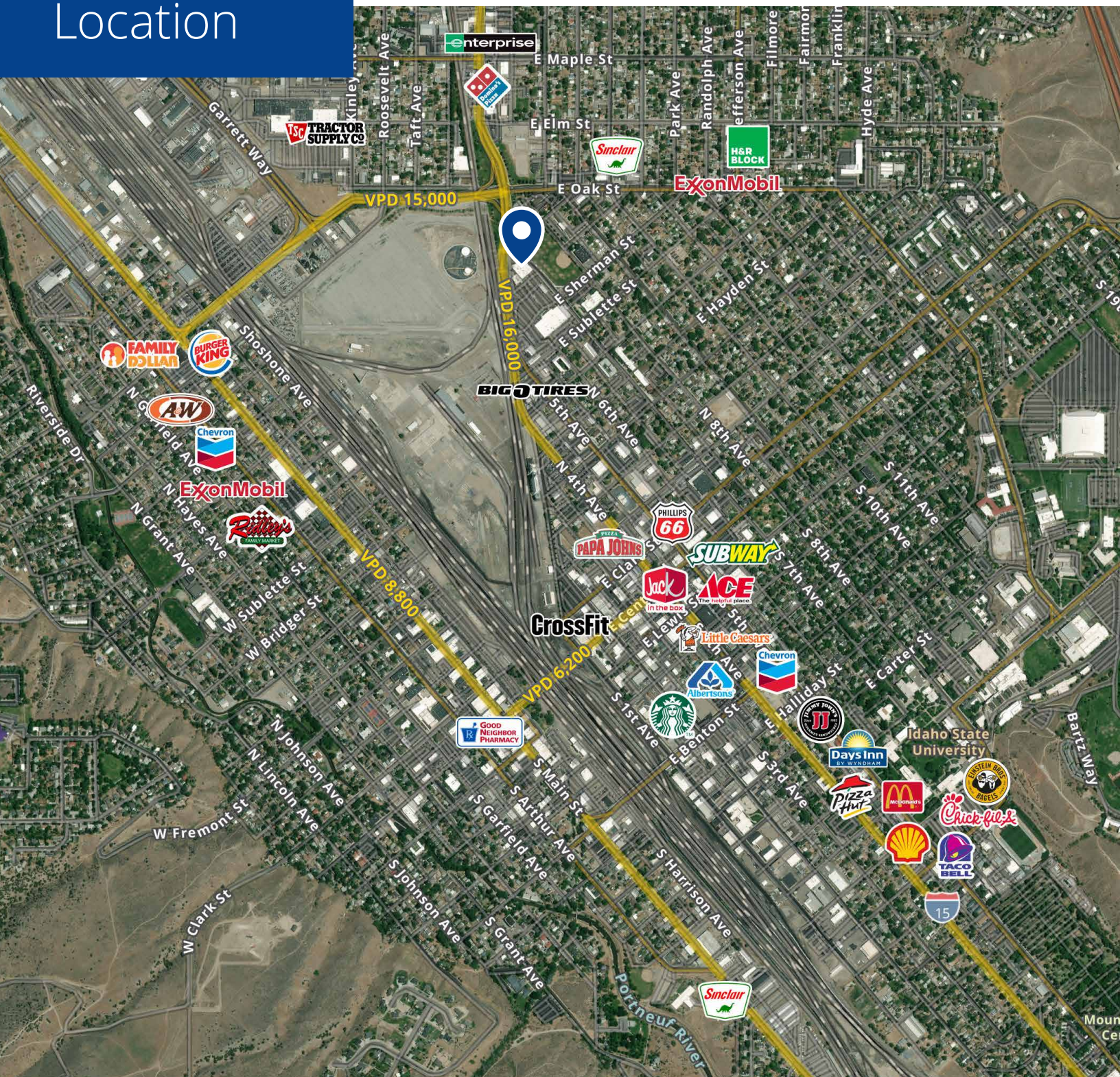
2nd Floor



# Location

 Google Map

 Street View



2043 E Center Street  
Pocatello, Idaho 83201  
208 951 2100  
colliers.com/idaho