

FOR SALE

*16,114 SF Office/Warehouse Building with
Large Yard Area Available in Snohomish*

1530 BONNEVILLE AVE, SNOHOMISH, WA



1530 BONNEVILLE AVE

*Rare office/showroom, warehouse,
and secured and fenced yard area,
located just off SR-9 in Snohomish*

11,322 SF clear span warehouse

4,792 SF office on two floors

24 parking spaces

3 grade-level doors:

- 12' x 14' (2 doors)
- 12' x 10' (1 door)

Easy freeway access

Currently leased through July 2026; tenant would vacate early for owner/user

16,114
TOTAL BUILDING SF

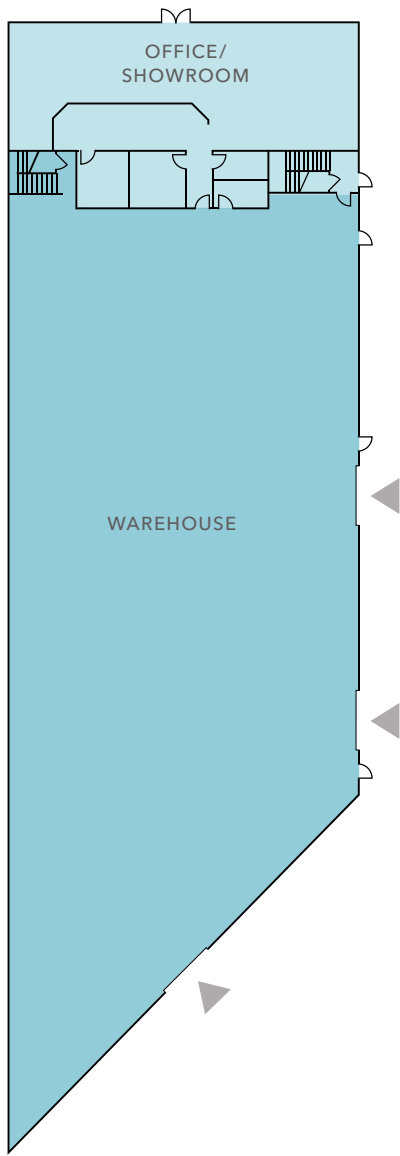
1.0+ AC
TOTAL YARD AREA

\$5.5M
SALE PRICE

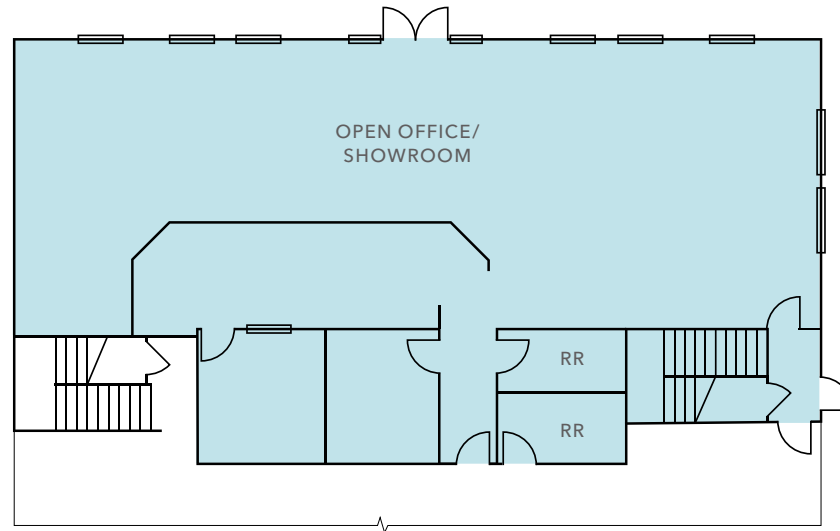
24'
CLEAR HEIGHT



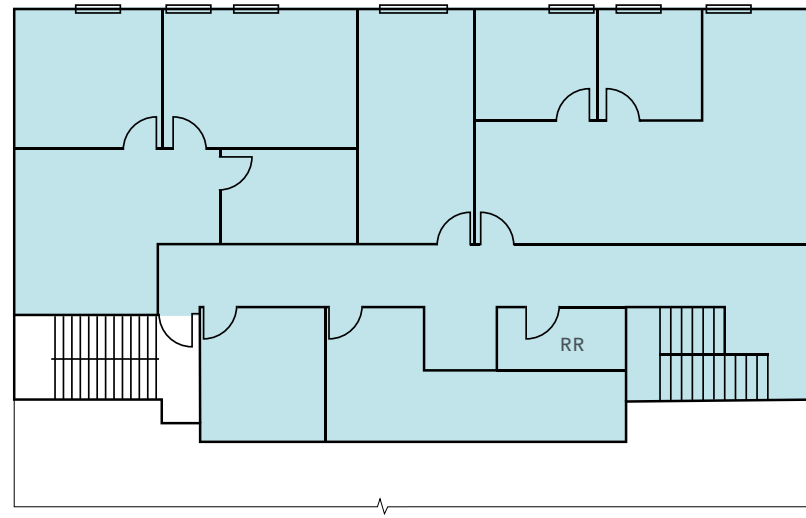
Building Floor Plan



First-Floor Plan



Second-Floor Plan



16,114 SF
TOTAL AVAILABLE

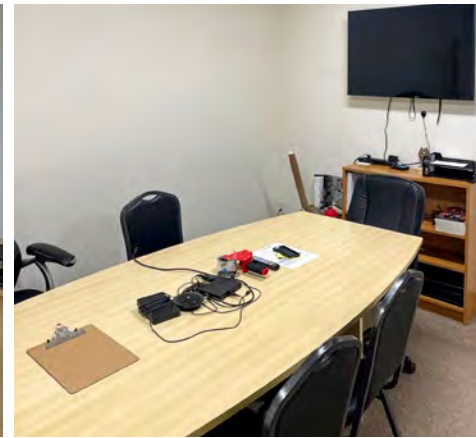
11,322 SF
TOTAL WAREHOUSE

2,478 SF
FIRST-FLOOR OFFICE

2,314 SF
SECOND-FLOOR OFFICE

▲ Grade-level loading

1530 BONNEVILLE AVE



AVAILABLE FOR SALE

KIDDER MATHEWS



**SUBJECT
PROPERTY**

10 MIN

DRIVE TO EVERETT

19 MIN

DRIVE TO WOODINVILLE

 PAINE FIELD
AIRPORT

*Puget
Sound*

1530 BONNEVILLE AVE

Exclusively listed by

JAMES LEPTICH
425.450.1159
james.leptich@kidder.com

ZACH VALL-SPINOSA
425.450.1115
zach.vallspinosa@kidder.com

KIDDER.COM

This information supplied herein is from sources we deem reliable. It is provided without any representation, warranty, or guarantee, expressed or implied as to its accuracy. Prospective Buyer or Tenant should conduct an independent investigation and verification of all matters deemed to be material, including, but not limited to, statements of income and expenses. Consult your attorney, accountant, or other professional advisor.

