



PROPERTY DETAILS

- Unit 702: 8,303 SF
- 500 SF of Office
- Est. 2025 CAM \$6.75 PSF
- 2 dock high doors
- 2 grade level door
- 28' clear ceiling height
- Zoning: IL - Light Industrial (City of Lauderhill)
- Parking Ratio: 1.84/1,000 SF
- Strategically located just east of US441 between the Fla. Tnpk. and I-95 providing easy access to all of south Florida.

ABOUT PROPERTY



PRICE

\$19.00 SF/yr (NNN)



YEAR BUILT

1987



AVAILABLE SF

8,303 SF



PARKING

1.84/1,000 SF



LOCATION

Fort Lauderdale

For more information:

Keith R. Graves, CCIM, SIOR

954.652.2031 | Kgraves@Bergercommercial.com

bergercommercial.com

Jonathan Thiel

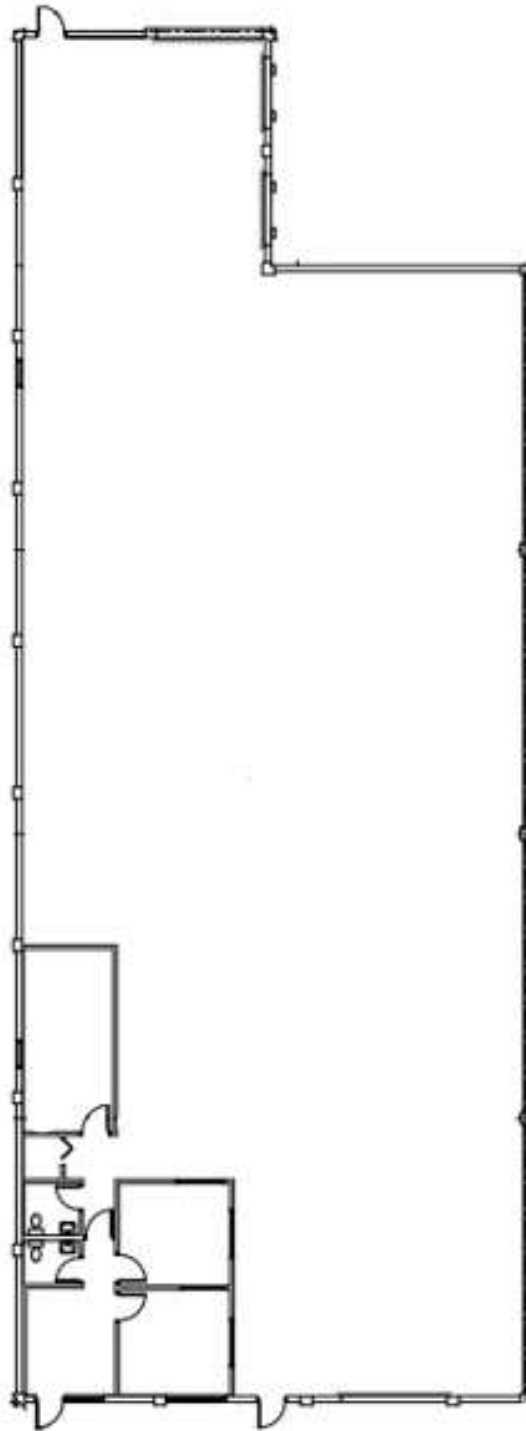
954.652.2020 | Jthiel@Bergercommercial.com

Daniel Forman

954.652.2004 | Dforman@Bergercommercial.com



COMMERCIAL BROKERAGE AND PROPERTY MANAGEMENT



For more information:

Keith R. Graves, CCIM, SIOR

954.652.2031 | Kgraves@Bergercommercial.Com

bergercommercial.com

Jonathan Thiel

954.652.2020 | Jthiel@Bergercommercial.Com

Daniel Forman

954.652.2004 | Dforman@Bergercommercial.Com

