



**CUSHMAN &  
WAKEFIELD**

FOR LEASE

**2525 N. Shadeland Avenue**  
Indianapolis, IN

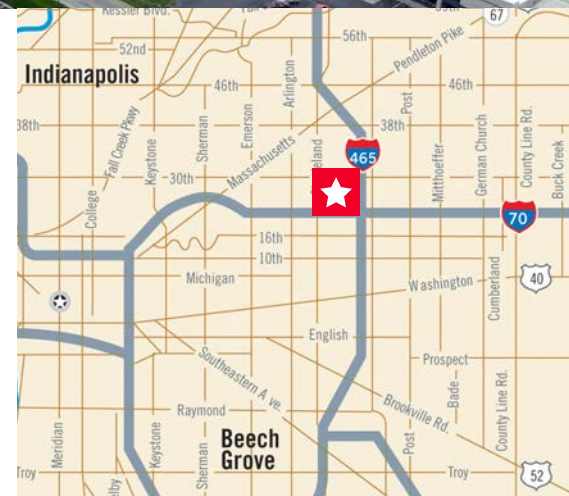
**OFFICE SPACE AVAILABLE**



## **Buildings 20 & 30** **15,572 - 22,460 SF Office Available**

### **Property Highlights**

- Exterior signage available
- Excellent for call center, classroom
- Abundant parking
- Easy access with traffic light into development
- Additional storage and warehouse space within park
- IndyGo bus stop on site
- \$13.50/SF Full Service



#### **Bennett Williams**

Director

Direct +1 317 639 0442

[bennett.williams@cushwake.com](mailto:bennett.williams@cushwake.com)

#### **Todd T. Vannatta, SIOR**

Senior Director

Direct +1 317 639 0455

[todd.vannatta@cushwake.com](mailto:todd.vannatta@cushwake.com)

#### **Michael W.M. Weishaar, SIOR**

Managing Director

Direct +1 317 639 0494

[michael.weishaar@cushwake.com](mailto:michael.weishaar@cushwake.com)

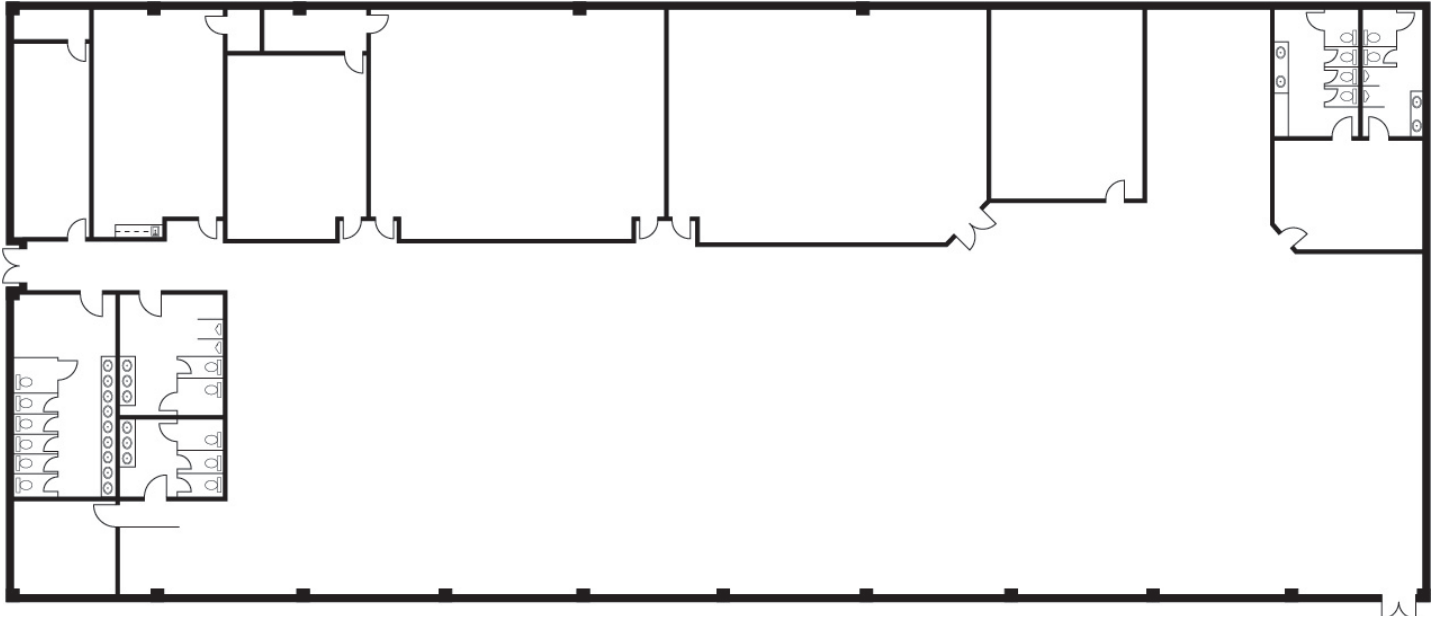
[cushmanwakefield.com](http://cushmanwakefield.com)

FOR LEASE

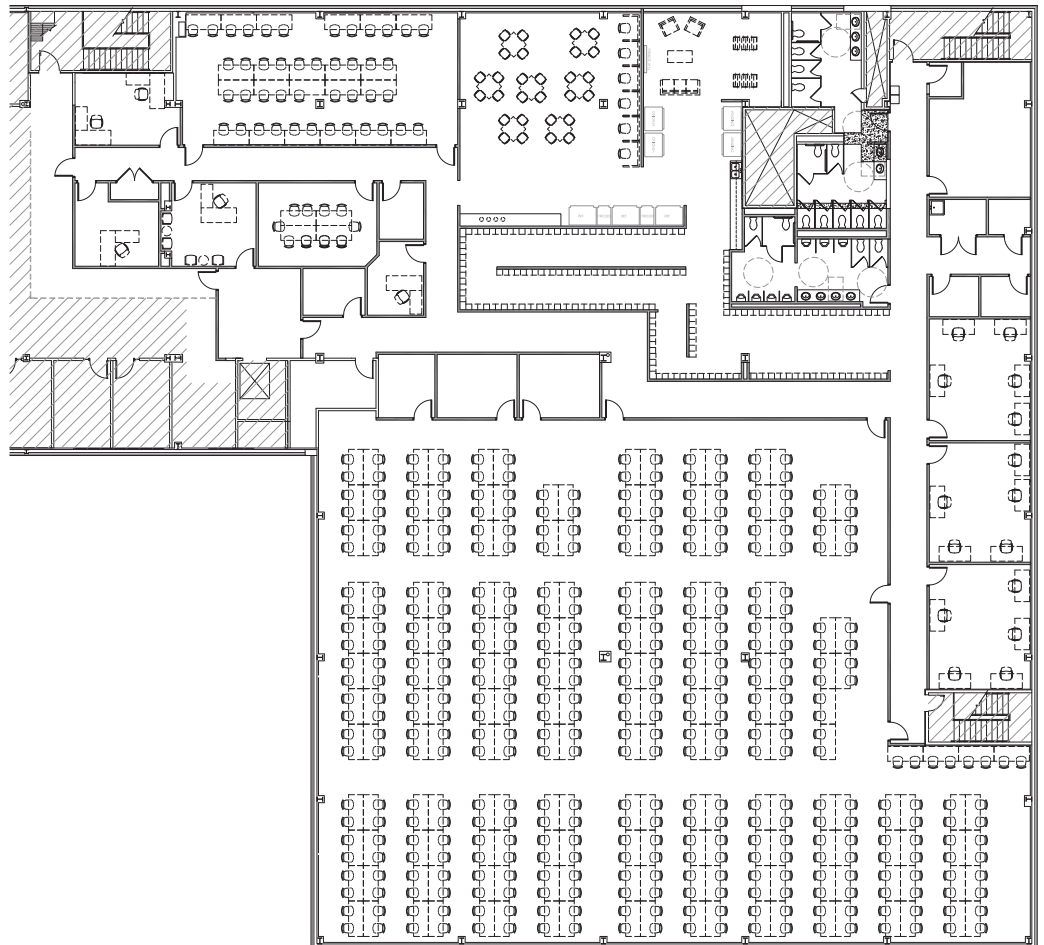
# 2525 N. Shadeland Avenue

Indianapolis , IN

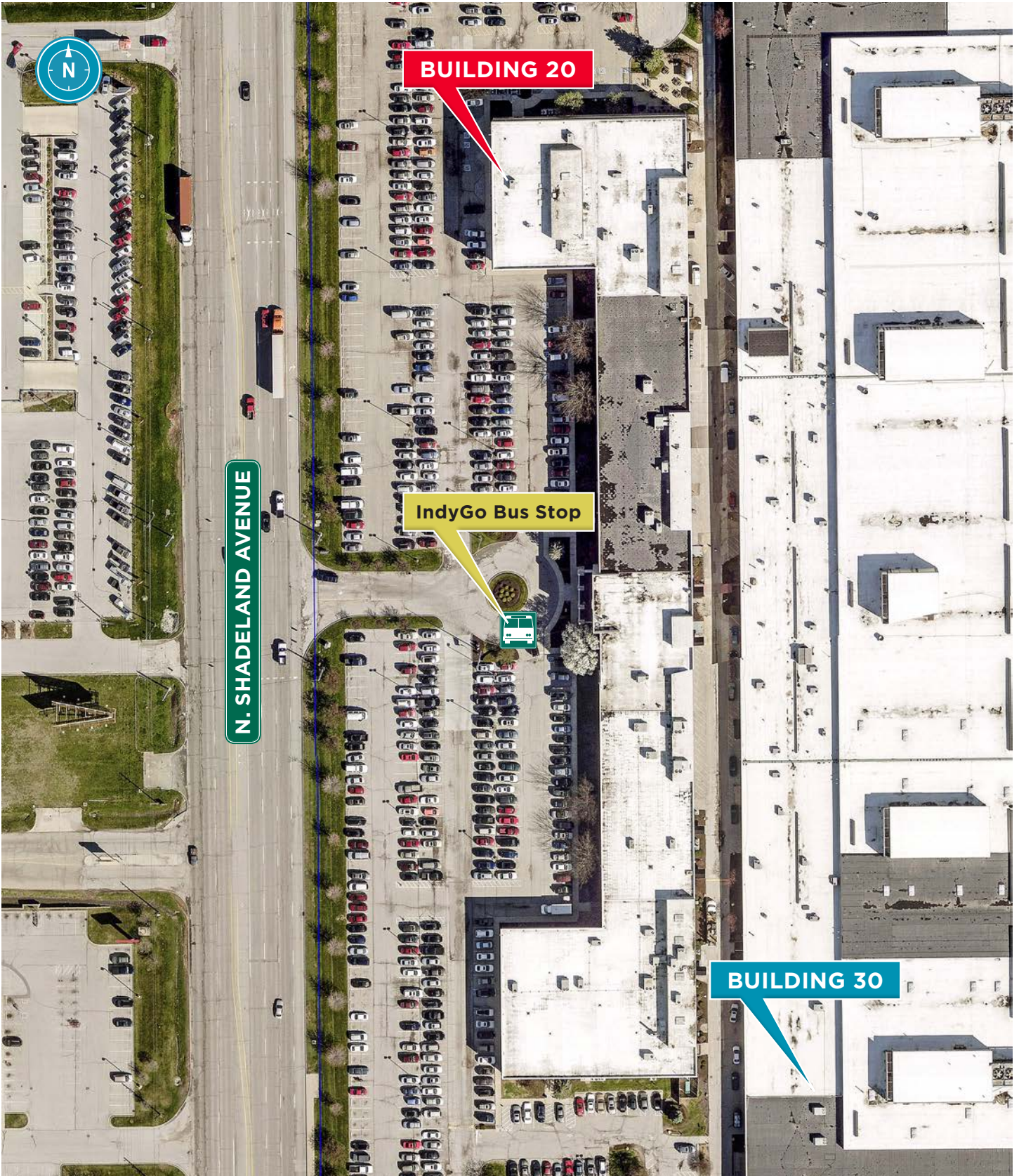
## Suite 10 (15,572 SF)



## Suite 250 (22,460 SF)











**CUSHMAN &  
WAKEFIELD**

FOR LEASE

**2525 N. Shadeland Avenue**  
Indianapolis , IN



**Bennett Williams**

Director

Direct +1 317 639 0442

[bennett.williams@cushwake.com](mailto:bennett.williams@cushwake.com)

**Todd T. Vannatta, SIOR**

Senior Director

Direct +1 317 639 0455

[todd.vannatta@cushwake.com](mailto:todd.vannatta@cushwake.com)

**Michael W.M. Weishaar, SIOR**

Managing Director

Direct +1 317 639 0494

[michael.weishaar@cushwake.com](mailto:michael.weishaar@cushwake.com)

One American Square, Suite 1800

Indianapolis, IN 46282 | USA

Main +1 317 634 6363

[cushmanwakefield.com](http://cushmanwakefield.com)