



JOHN STANLEY
&
ASSOCIATES

COMMERCIAL REAL ESTATE



HALCYON POINTE - Building I
7515 Halcyon Summit Drive
Montgomery, AL 36117

FOR LEASE

- **± 24,282 RSF (ALL OR PART)**
 - Suite 100: ± 4,571 RSF
 - Suite 101: ± 4,801 RSF
 - Suite 103: ± 4,745 RSF
 - Suite 107: ± 1,265 RSF
 - Suite 303: ± 3,464 RSF
 - Suite 305: ± 4,565 RSF
 - Suite 307: ± 871 RSF
- **\$21/RSF (FULL SERVICE RATE)**
- **LEASE TERM: THREE (3) YEAR MINIMUM**
- **TENANT IMPROVEMENTS: NEGOTIABLE**
- **OCCUPANCY: IMMEDIATE**

Halcyon Pointe, Building I, a class “A” Office Building is developed on a wooded 15.5 acres site, with convenient access to Taylor Road & I-85 (Exit 9), Montgomery, AL. Current tenants include Auburn University at Montgomery, Home Builders Association of Alabama, Morgan Stanley Smith Barney, and Caliber Home Loans, Inc. Contact John Stanley, CCIM, for more information at (334) 271-2475.



John C. Stanley, CCIM
John Stanley & Associates, Inc.
4747 Woodmere Boulevard
Montgomery, AL 36106
(334) 271-2475 voice
(334) 271-2421 fax
jstanley@johnstanleyassociates.com
www.johnstanleyassociates.com



All information is from sources deemed reliable, but no warranty is made as to the accuracy thereof and same is submitted subject to errors, omissions, change of price, or other conditions, such as prior sales or withdrawal without notice by John Stanley & Associates, Inc. or the Owner.



HALCYON POINTE I

TENANT SPACE 100

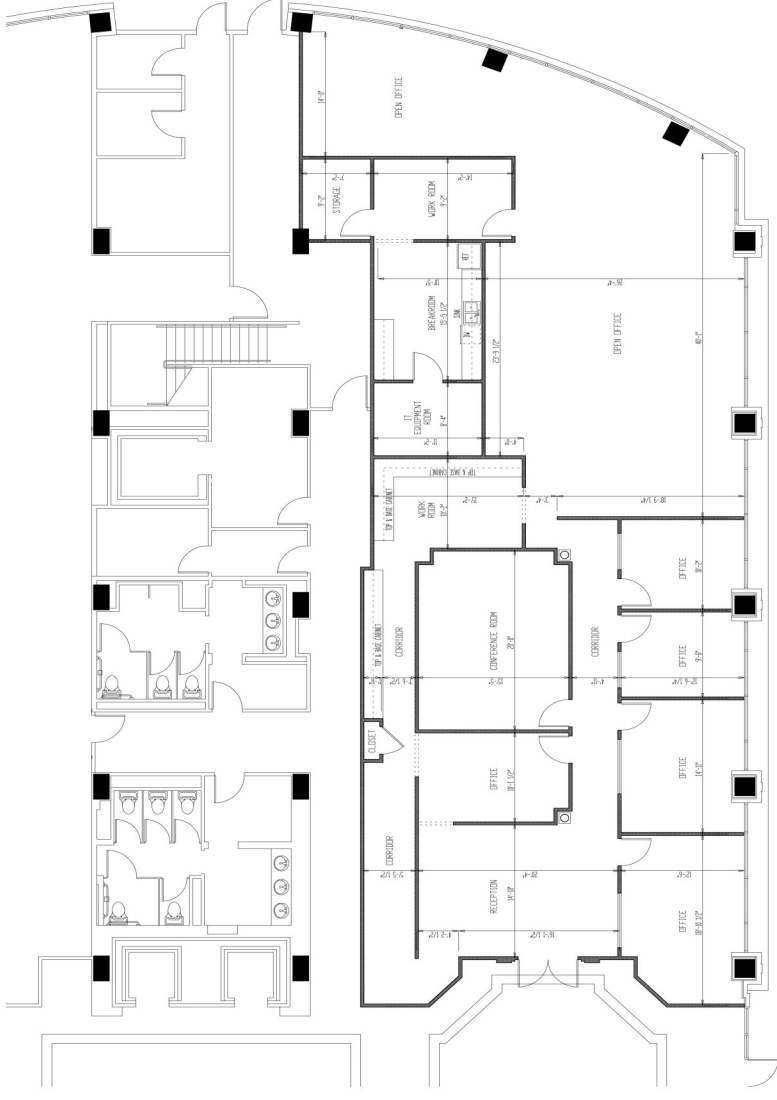
7515 HALCYON ALPUMMIT DRIVE
MONTGOMERY ALABAMA 36117

SHEET TITLE
SUITE 100 LEASE PLAN

PROJECT NUMBER HALC
FILE NUMBER AB
DATE MAY 09, 2006

REVISION:
DRAWING NOT INTENDED
TO BE A SPECIFICATION TO
BE USED AS A GUIDE FOR
CONSTRUCTION ONLY.

SHEET NUMBER
L100

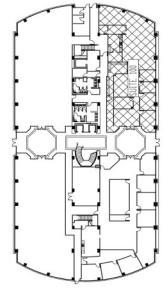


SUITE 100 LEASE PLAN

SCALE: 3/16" = 1'-0"

USABLE SQUARE FOOTAGE: 3,962 SF

RENTABLE SQUARE FOOTAGE: 4,571 SF



KEY PLAN

HALCYON POINTE I TENANT SPACE 101

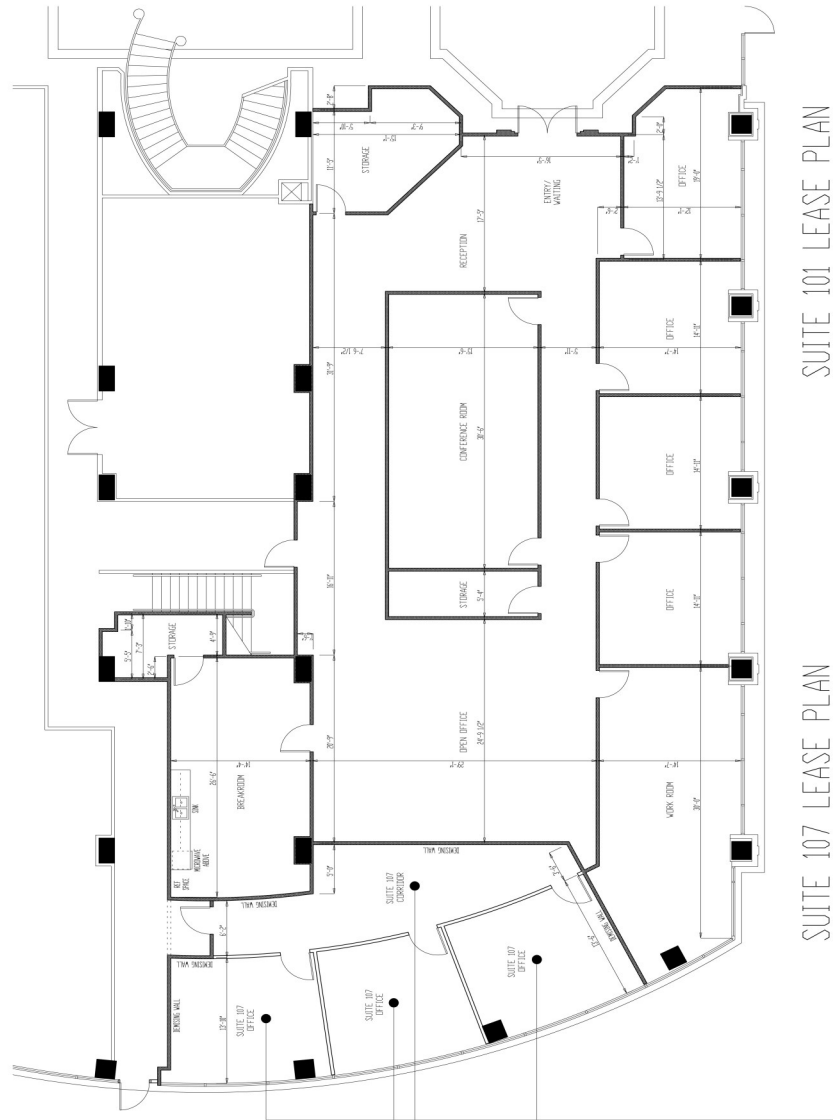
7515 HALCYON SUMMIT DRIVE
MONTGOMERY ALABAMA 36117

SHEET TITLE
302 CATOMA ANEX
LOFT FLOOR PLAN

PROJECT NUMBER HALC
FILE NUMBER AI
DATE MAY 09 2006
REVISION

WORKS SHOWN
TO BE A SPECIFICATION TO
BE USED AS A GUIDE FOR
CONSTRUCTION ONLY.

SHEET NUMBER
L101

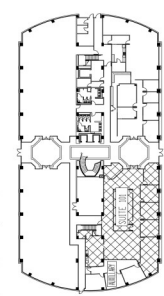


SUITE 101 LEASE PLAN

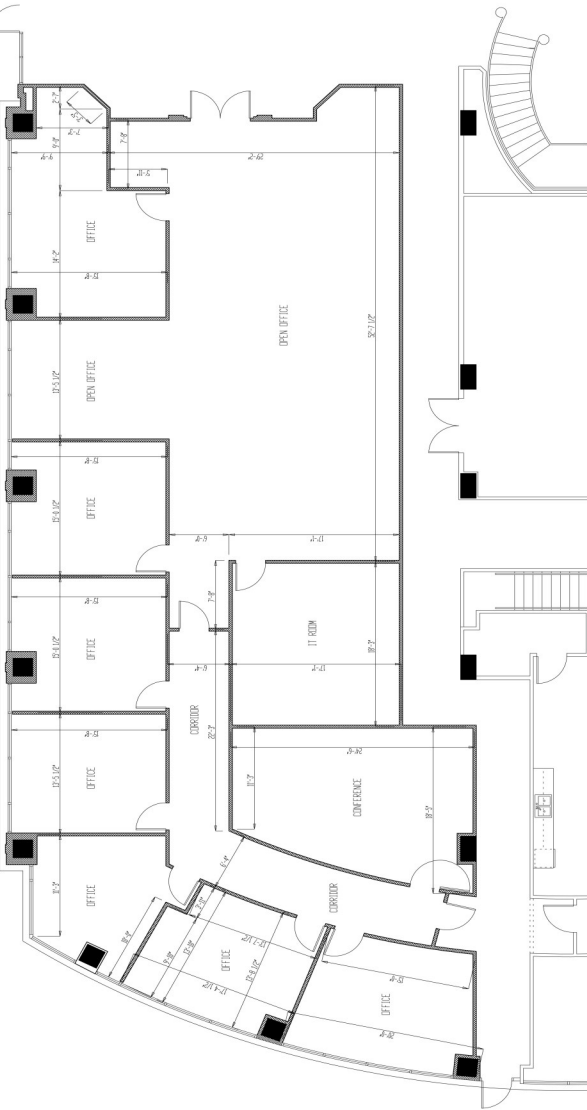
SCALE: 3/16" = 1'-0"
USABLE SQUARE FOOTAGE: 4,162 SF
RENTABLE SQUARE FOOTAGE: 4,801 SF

SUITE 107 LEASE PLAN

SCALE: 3/16" = 1'-0"
USABLE SQUARE FOOTAGE: 1,096 SF
RENTABLE SQUARE FOOTAGE: 1,265 SF

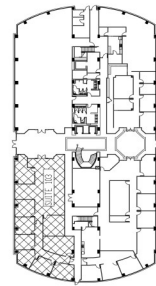


KEY PLAN



SUITE 103 LEASE PLAN

SCALE: 3/16" = 1'-0"
 USABLE SQUARE FOOTAGE: 4,113 SF
 RENTABLE SQUARE FOOTAGE: 4,745 SF



KEY PLAN

**HALCYON POINTE I
 TENANT SPACE 103**

7515 HALCYON SUMMIT DRIVE
 MONTGOMERY ALABAMA 36117

SHEET TITLE
 SUITE 103 LEASE PLAN

PROJECT NUMBER H4LC
 FILE NUMBER A03
 DATE MAY 12, 2006

REVISION:
 DRAWING NOT INTENDED
 TO BE A SPECIFICATION TO
 BE USED AS A GUIDE FOR
 CONSTRUCTION ONLY.

SHEET NUMBER
 L103

HALCYON POINTE I TENANT SPACE 303

7515 HALCYON SUMMIT DRIVE
MONTGOMERY ALABAMA 36117

SHEET TITLE
SUITE 303 LEASE PLAN

PROJECT NUMBER: HALC
FILE NUMBER: 43
DATE: MAY 02, 2016
REVISION:

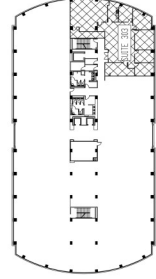
THIS DRAWING IS TO BE USED AS A GUIDE FOR CONSTRUCTION ONLY.

SHEET NUMBER
L303



SUITE 303 LEASE PLAN

SCALE: 3/16" = 1'-0"
USABLE SQUARE FOOTAGE: 3,006 SF
RENTABLE SQUARE FOOTAGE: 3,464 SF



KEY PLAN

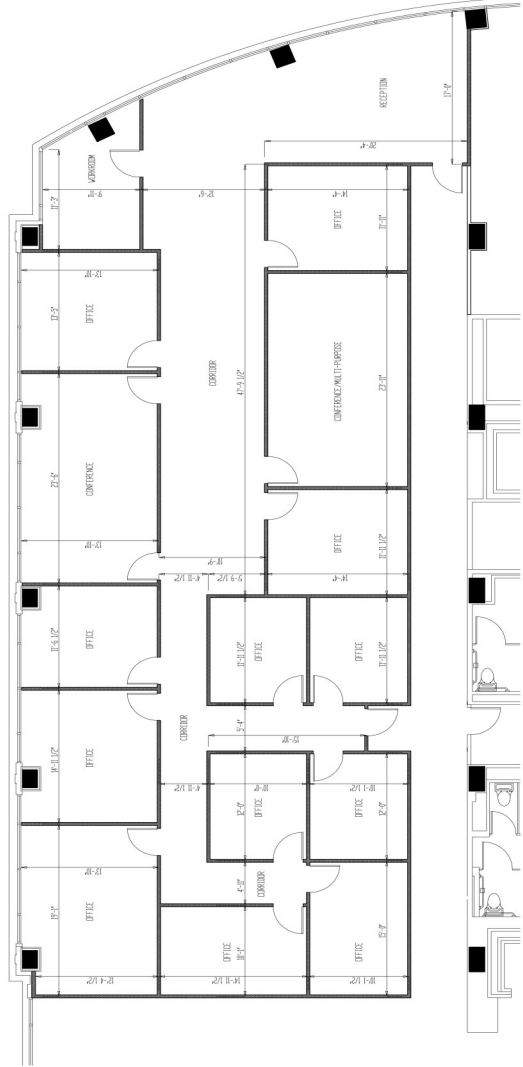
HALCYON POINTE I
 TENANT SPACE 305
 7015 MONTGOMERY ALCYON ALABAMA DRIVE
 MONTGOMERY ALABAMA 36117

SHEET TITLE
 SUITE 305 LEASE PLAN

PROJECT NUMBER: PHLC
 FILE NUMBER: H305
 DATE: SEPT 27, 2017
 REVISION:

DRAWINGS NOT INTENDED
 TO BE A SPECIFICATION TO
 ANY CONTRACT. ALL WORK
 CONSTRUCTION ONLY.

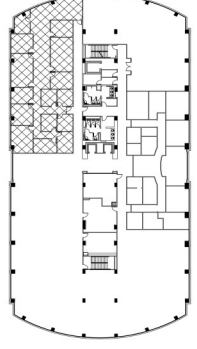
SHEET NUMBER
 L305



SUITE 305 LEASE PLAN

SCALE: 3/16" = 1'-0"

RENTABLE SQUARE FOOTAGE: 4,565 SF



KEY PLAN

