

RESTAURANT AVAILABLE FOR SALE OR LEASE

3441 E. Harry St., Wichita, KS 67218



BUILDING SIZE:	2,956 SF
SALE PRICE:	Contact Broker
LEASE RATE:	\$15.00/SF (NNN)
ESTIMATED NNN:	\$4.50/SF
LOT SIZE:	36,336 SF
ZONING:	Limited Commercial
2023 TAXES:	Generals: \$7,340.17 Specials: \$10.67

PROPERTY HIGHLIGHTS

- Located near Harry & Hillside.
- 128 ft of frontage along Harry
- Nearby businesses include:



DEMOGRAPHICS	1 MILE	3 MILES	5 MILES
POPULATION	13,444	89,821	210,620
AVG. HH INCOME	\$54,783	\$60,485	\$63,777
MEDIAN AGE	39	37	37
TRAFFIC COUNTS			
HARRY & HILLSIDE	25,391 VPD		



Offered exclusively by: **Alex Ibarra, CCIM**
316-292-3903 | aibarra@weigand.com

Jessica Mourning
316-292-3939 | jmourning@weigand.com

RESTAURANT AVAILABLE FOR SALE OR LEASE

3441 E. Harry St., Wichita, KS 67218

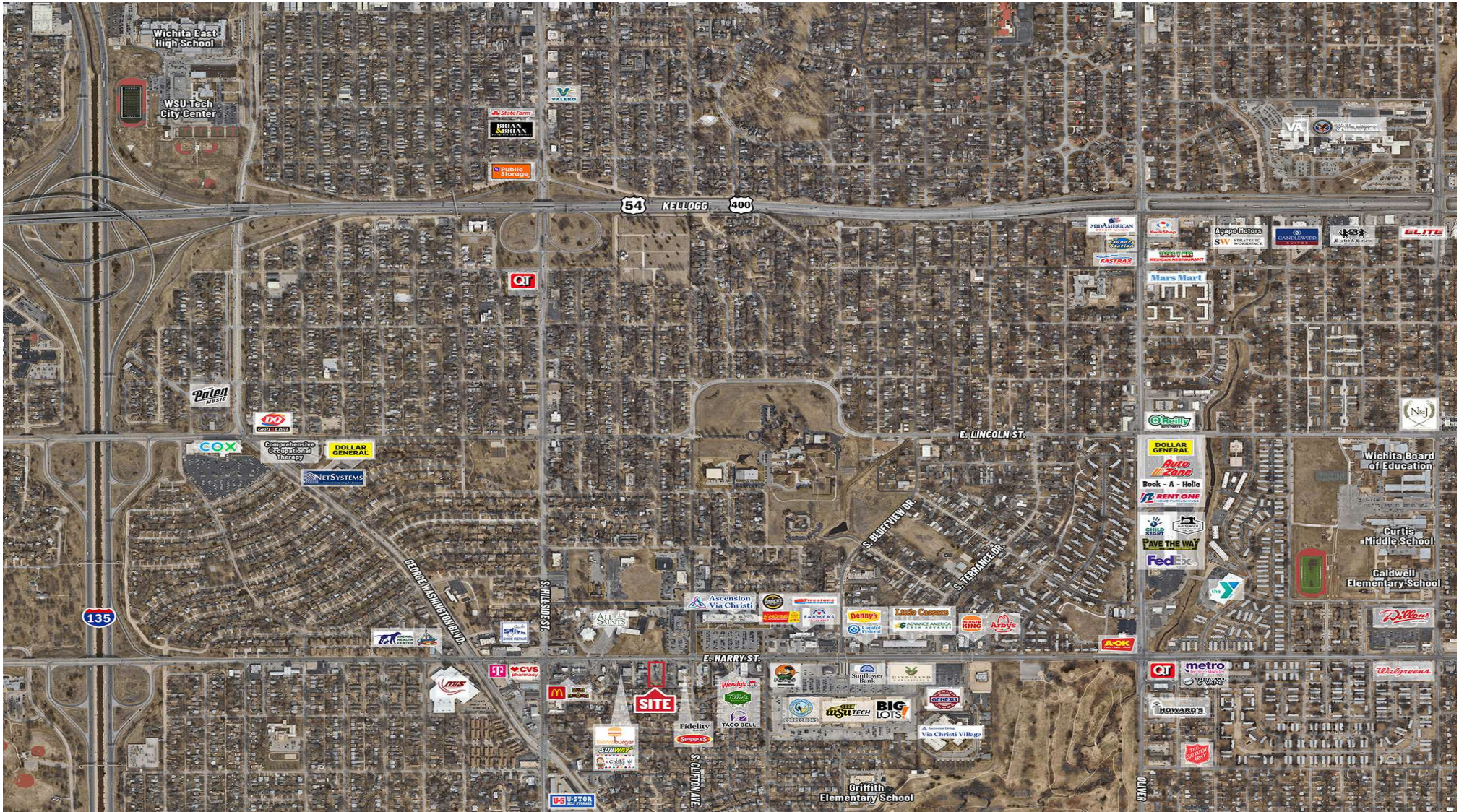


Offered exclusively by: **Alex Ibarra, CCIM**
316-292-3903 | aibarra@weigand.com

Jessica Mourning
316-292-3939 | jmourning@weigand.com

RESTAURANT AVAILABLE FOR SALE OR LEASE

3441 E. Harry St., Wichita, KS 67218



Offered exclusively by: **Alex Ibarra, CCIM**
316-292-3903 | aibarra@weigand.com

Jessica Mourning
316-292-3939 | jmourning@weigand.com